

CUADRO DE COORDENADAS Y ELEMENTOS DE CURVAS

SENT.	DELTA	RADIO	TANG.	L.C.	Ext.	P.I.	P.C.	P.T.	NORTE	ESTE	PX	SA	
54	I	23°28'17"	160.000	33.238	65.544	3.416	11 + 411.847	11 + 378.609	11 + 444.153	9181221.994	817334.268	4.0	0.70
55	I	1°53'56"	1000.000	16.572	33.142	0.137	11 + 592.263	11 + 575.690	11 + 608.832	9181041.190	817348.310	2.5	0.20
56	I	22°14'38"	160.000	31.454	62.117	3.063	11 + 819.697	11 + 788.243	11 + 850.360	9180815.144	817373.426	4.0	0.60
57	D	16°06'51"	200.000	28.311	56.249	1.994	11 + 986.144	11 + 957.832	12 + 014.081	9180668.289	817453.440	3.0	0.50

PLANTA
1:2000

BM-20
COTA: 2649.673

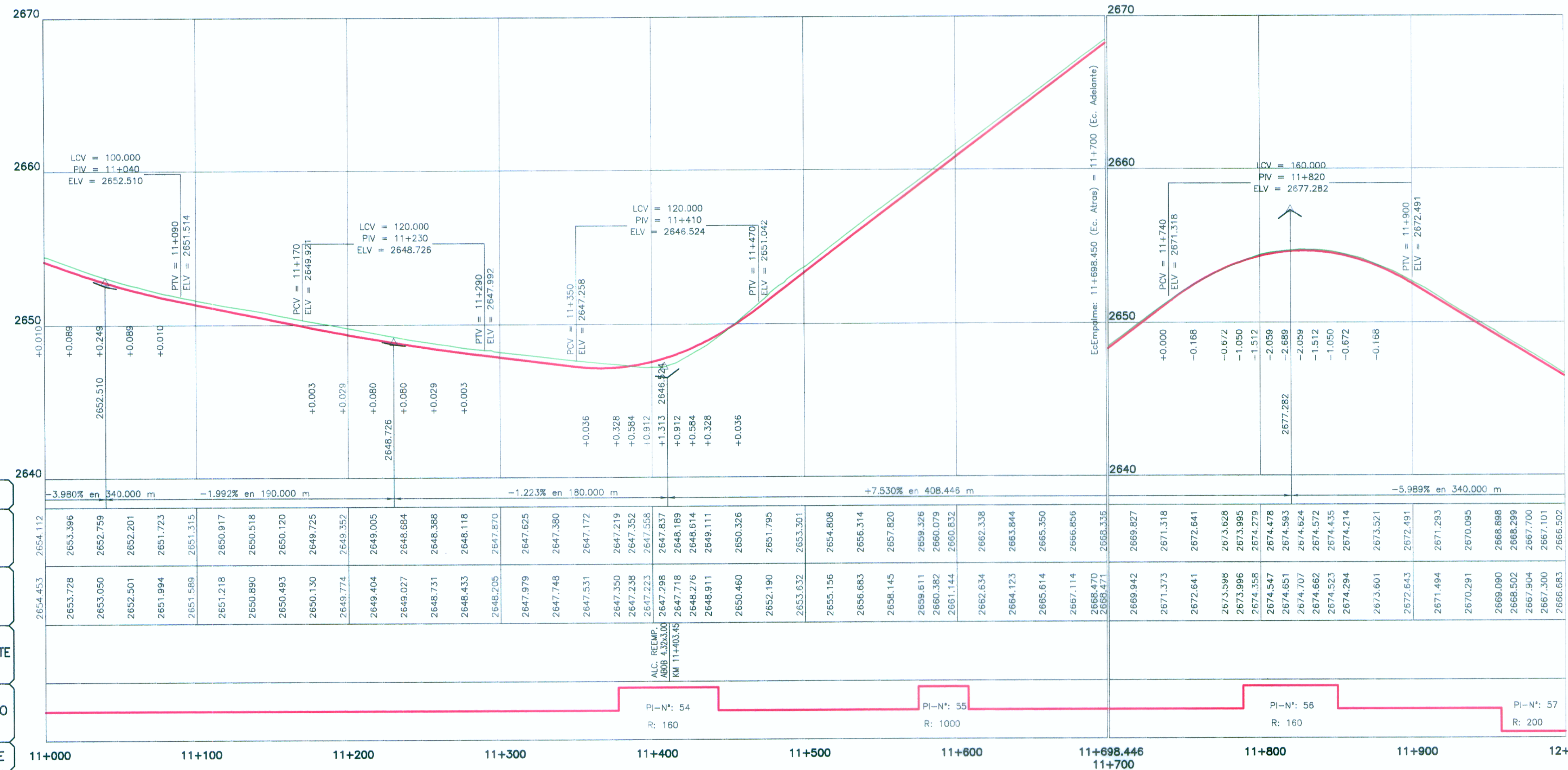
UBICACION: Km 11+190
LADO: L.D. a 5.10 m del eje de la carretera
REFERENCIAS: Marca sobre Hto de Concreto

BM-21
COTA: 2674.100

UBICACION: 11+750
LADO: L.D. c 6.20 m del eje de la carretera
REFERENCIAS: Marca sobre Hto de Concreto

LEYENDA

- PLANTA :**
- TRAZO DE PROYECTO
 - CARRETERA EXISTENTE
 - CURVA MAYOR
 - CURVA MENOR
 - RIO
 - QUEBRADA
 - CANAL
 - ACEQUIA
 - MURO DE ADOBE
 - MURO DE CONCRETO
 - PLAZOLETA
 - PARADERO
 - VIVIENDA EXISTENTE
 - TERRENO DE CULTIVO
 - CERCO
 - POSTE MEDIA TENSION
 - POSTE LUZ
 - CALICATA
 - MURO DE PIEDRA
 - DESLIZAMIENTO DE TERRENO
 - BOFEDAL
- PERFIL :**
- SUB RASANTE
 - TERRENO EXISTENTE



PENDIENTE	COTA SUBRASANTE	COTA TERRENO	OBRAS DE ARTE	ALINEAMIENTO	KILOMETRAJE
-3.980% en 340.000 m	2654.453	2654.453		PI-N°: 54	11+000
-1.992% en 190.000 m	2653.396	2653.396		PI-N°: 55	11+100
-1.223% en 180.000 m	2652.759	2652.759			11+200
+7.530% en 408.446 m	2652.201	2652.201			11+300
	2651.723	2651.723			11+400
	2651.315	2651.315			11+500
	2650.917	2650.917			11+600
	2650.518	2650.518			11+700
	2650.120	2650.120			11+800
	2649.725	2649.725			11+900
	2649.352	2649.352			12+000
	2648.984	2648.984			
	2648.588	2648.588			
	2648.118	2648.118			
	2647.670	2647.670			
	2647.258	2647.258			
	2646.826	2646.826			
	2646.378	2646.378			
	2645.924	2645.924			
	2645.454	2645.454			
	2644.968	2644.968			
	2644.466	2644.466			
	2643.948	2643.948			
	2643.414	2643.414			
	2642.864	2642.864			
	2642.298	2642.298			
	2641.718	2641.718			
	2641.124	2641.124			
	2640.516	2640.516			
	2639.894	2639.894			
	2639.258	2639.258			
	2638.608	2638.608			
	2637.944	2637.944			
	2637.266	2637.266			
	2636.574	2636.574			
	2635.868	2635.868			
	2635.148	2635.148			
	2634.414	2634.414			
	2633.666	2633.666			
	2632.904	2632.904			
	2632.128	2632.128			
	2631.338	2631.338			
	2630.534	2630.534			
	2629.716	2629.716			
	2628.884	2628.884			
	2628.038	2628.038			
	2627.178	2627.178			
	2626.304	2626.304			
	2625.416	2625.416			
	2624.514	2624.514			
	2623.598	2623.598			
	2622.668	2622.668			
	2621.724	2621.724			
	2620.766	2620.766			
	2619.794	2619.794			
	2618.808	2618.808			
	2617.808	2617.808			
	2616.794	2616.794			
	2615.766	2615.766			
	2614.724	2614.724			
	2613.668	2613.668			
	2612.598	2612.598			
	2611.514	2611.514			
	2610.416	2610.416			
	2609.304	2609.304			
	2608.178	2608.178			
	2607.038	2607.038			
	2605.884	2605.884			
	2604.716	2604.716			
	2603.534	2603.534			
	2602.338	2602.338			
	2601.128	2601.128			
	2599.904	2599.904			
	2598.666	2598.666			
	2597.414	2597.414			
	2596.148	2596.148			
	2594.868	2594.868			
	2593.574	2593.574			
	2592.266	2592.266			
	2590.944	2590.944			
	2589.608	2589.608			
	2588.258	2588.258			
	2586.894	2586.894			
	2585.516	2585.516			
	2584.124	2584.124			
	2582.718	2582.718			
	2581.298	2581.298			
	2579.864	2579.864			
	2578.416	2578.416			
	2576.954	2576.954			
	2575.478	2575.478			
	2574.988	2574.988			
	2574.484	2574.484			
	2573.966	2573.966			
	2573.434	2573.434			
	2572.888	2572.888			
	2572.328	2572.328			
	2571.754	2571.754			
	2571.166	2571.166			
	2570.564	2570.564			
	2569.948	2569.948			
	2569.318	2569.318			
	2568.674	2568.674			
	2568.016	2568.016			
	2567.344	2567.344			
	2566.658	2566.658			
	2565.958	2565.958			
	2565.244	2565.244			
	2564.516	2564.516			
	2563.774	2563.774			
	2563.018	2563.018			
	2562.248	2562.248			
	2561.464	2561.464			
	2560.666	2560.666			
	2559.854	2559.854			
	2559.028	2559.028			
	2558.188	2558.188			
	2557.334	2557.334			
	2556.466	2556.466			
	2555.584	2555.584			
	2554.688	2554.688			
	2553.778	2553.778			
	2552.854	2552.854			
	2551.916	2551.916			
	2550.964	2550.964			
	2550.000	2550.000			
	2549.024	2549.024			
	2548.034	2548.034			
	2547.030	2547.030			
	2546.012	2546.012			
	2544.980	2544.980			
	2543.934	2543.934			
	2542.874	2542.874			
	2541.800	2541.800			
	2540.712	2540.712			
	2539.610	2539.610			
	2538.494	2538.494			
	2537.364	2537.364			
	2536.220	2536.220			
	2535.062	2535.062			
	2533.890	2533.890			
	2532.704	2532.704			
	2531.504	2531.504			
	2530.290	2530.290			
	2529.062	2529.062			
	2527.820	2527.820			
	2526.564	2526.564			
	2525.294	2525.294			
	2524.010	2524.010			
	2522.712	2522.712			
	2521.400	2521.400			
	2520.074	2520.074			
	2518.734	2518.734			
	2517.380	2517.380			
	2516.012	2516.012			
	2514.630	2514.630			
	2513.234	2513.234			
	2511.824	2511.824			
	2510.400	2510.400			
	2508.962	2508.962			
	2507.510	2507.510			
	2506.044	2506.044			
	2504.564	2504.564			
	2503.070	2503.070			
	2501.562	2501.562			
	2500.040	2500.040			
	2498.504	2498.504			
	2496.954	2496.954			
	2495.390	2495.390			
	2493.812	2493.812			
	2492.220	2492.220			
	2490.614	2490.614			
	2488.994	2488.994			
	2487.360	2487.360			
	2485.712	2485.712			
	2484.050	2484.050			
	2482.374	2482.374			
	2480.684	2480.684			
	2478.980	2478.980			
	2477.262	2477.262			
	2475.530				