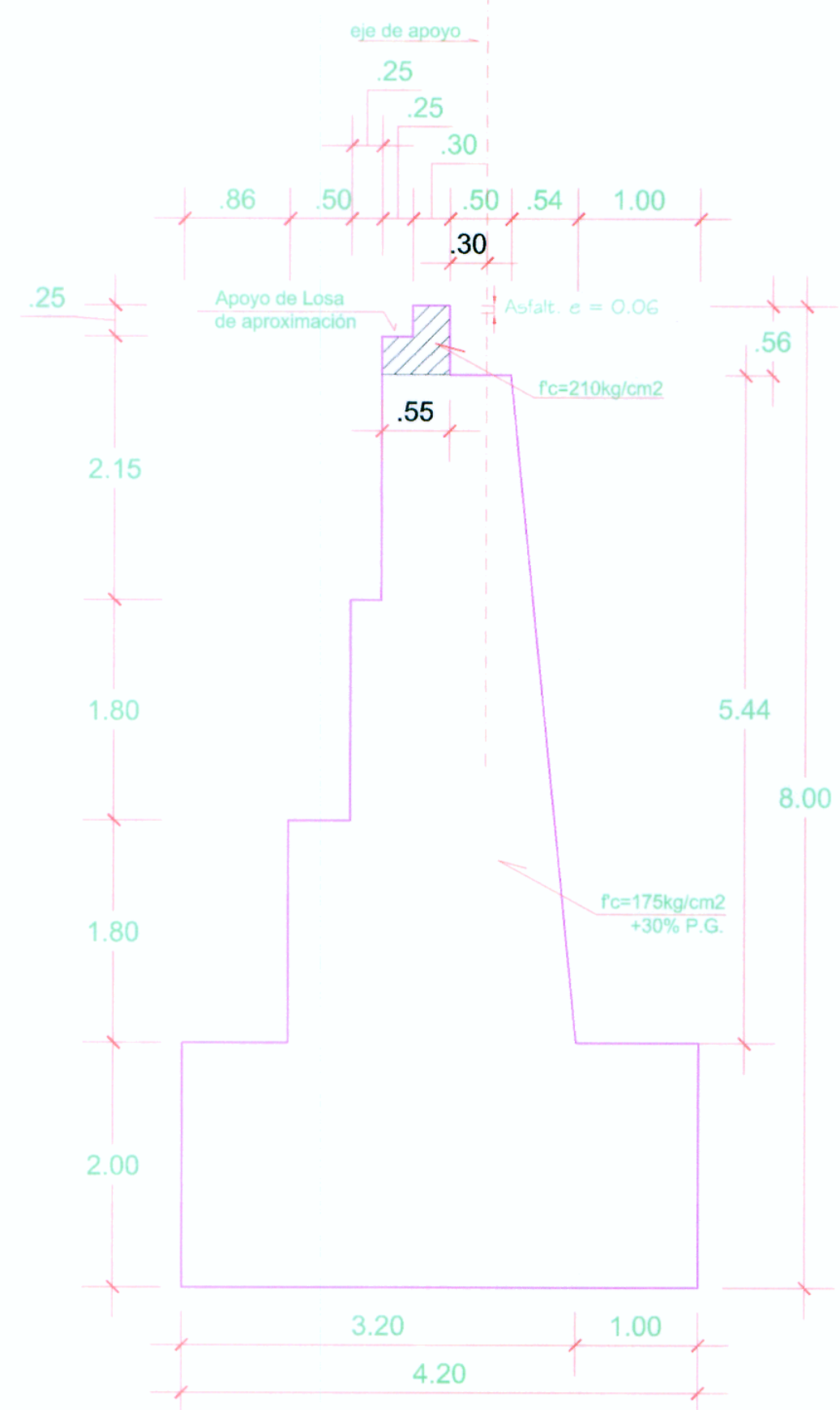
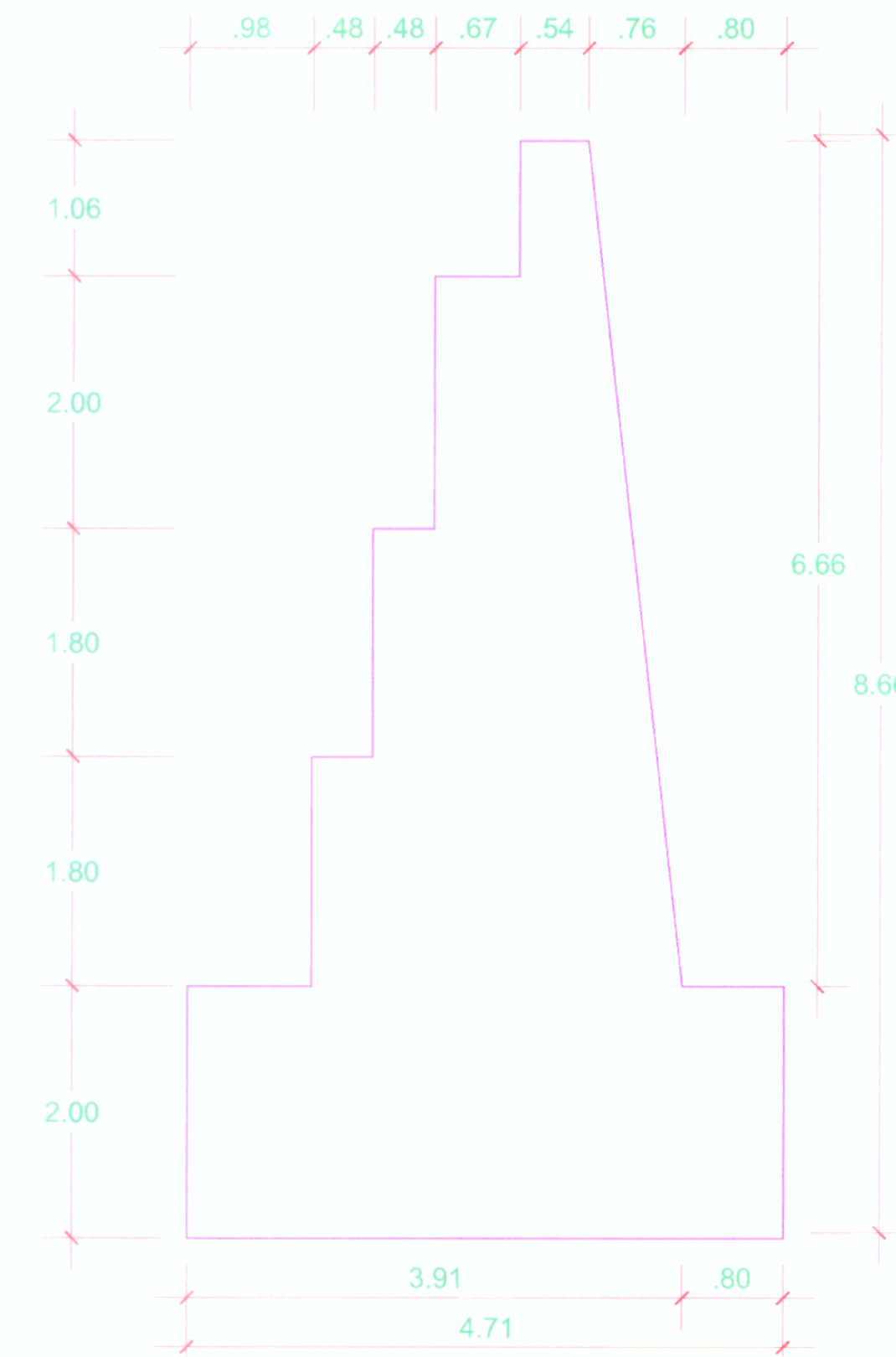


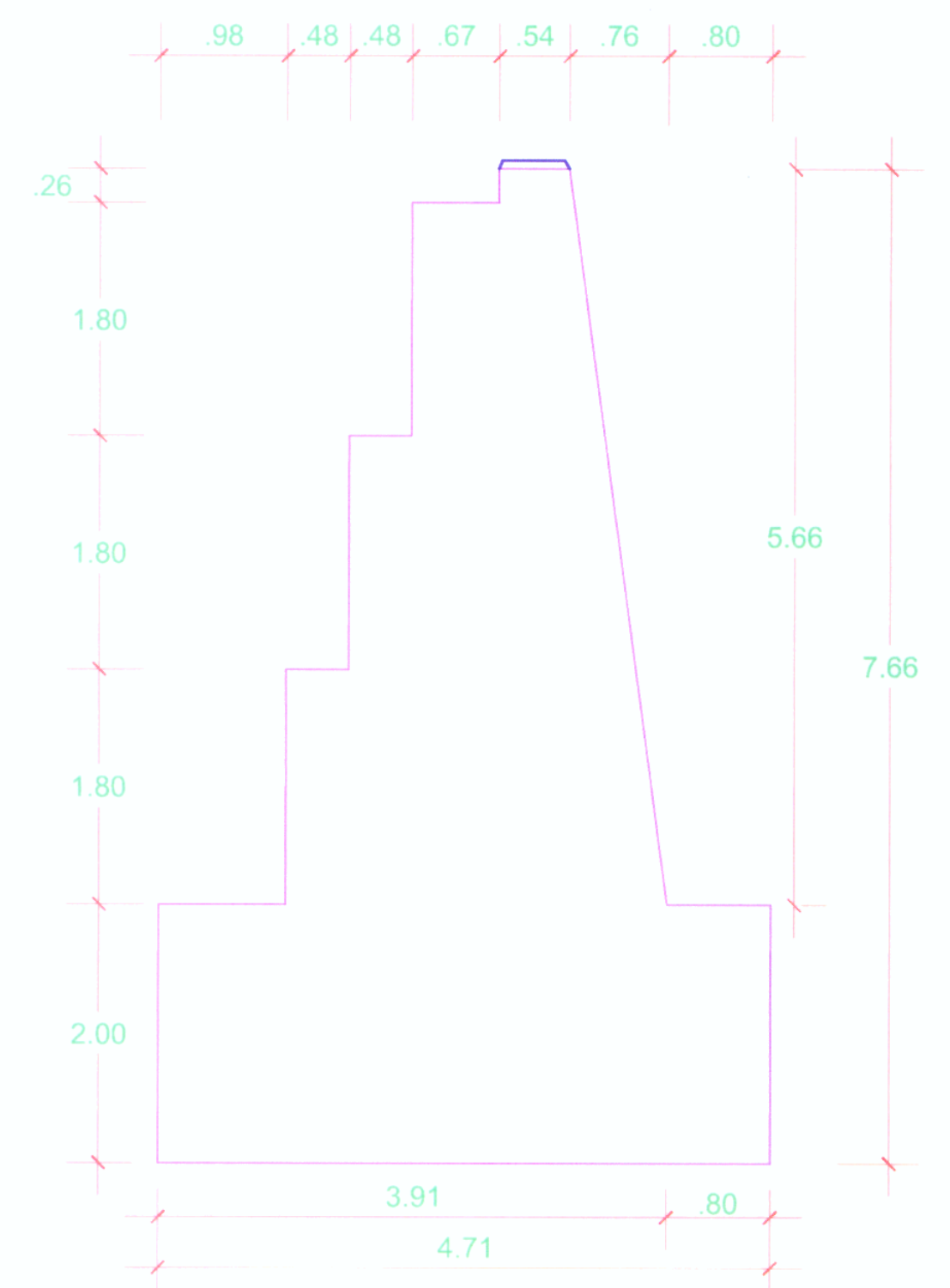
ELEVACIÓN FRONTAL
ESC. 1/75



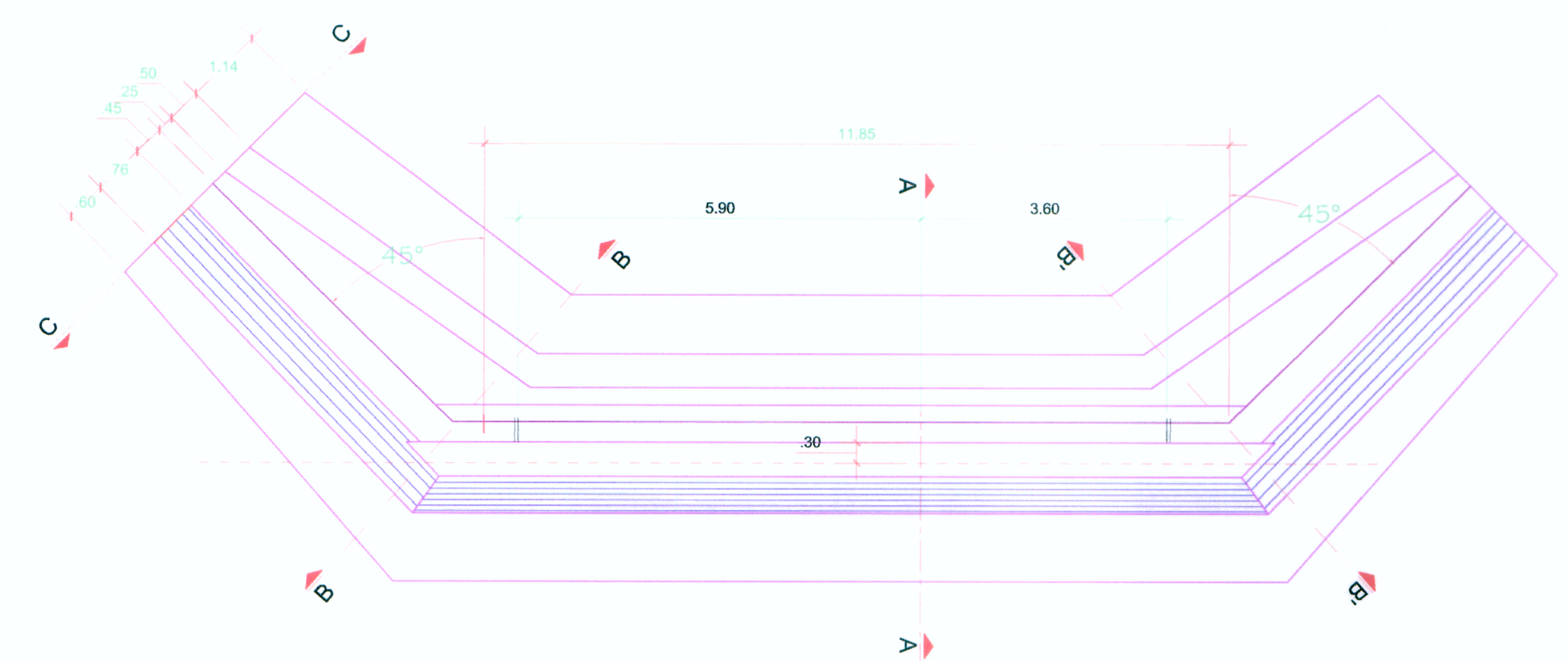
SECCIÓN A-A (EJE DE VÍA)
ESC. 1/50



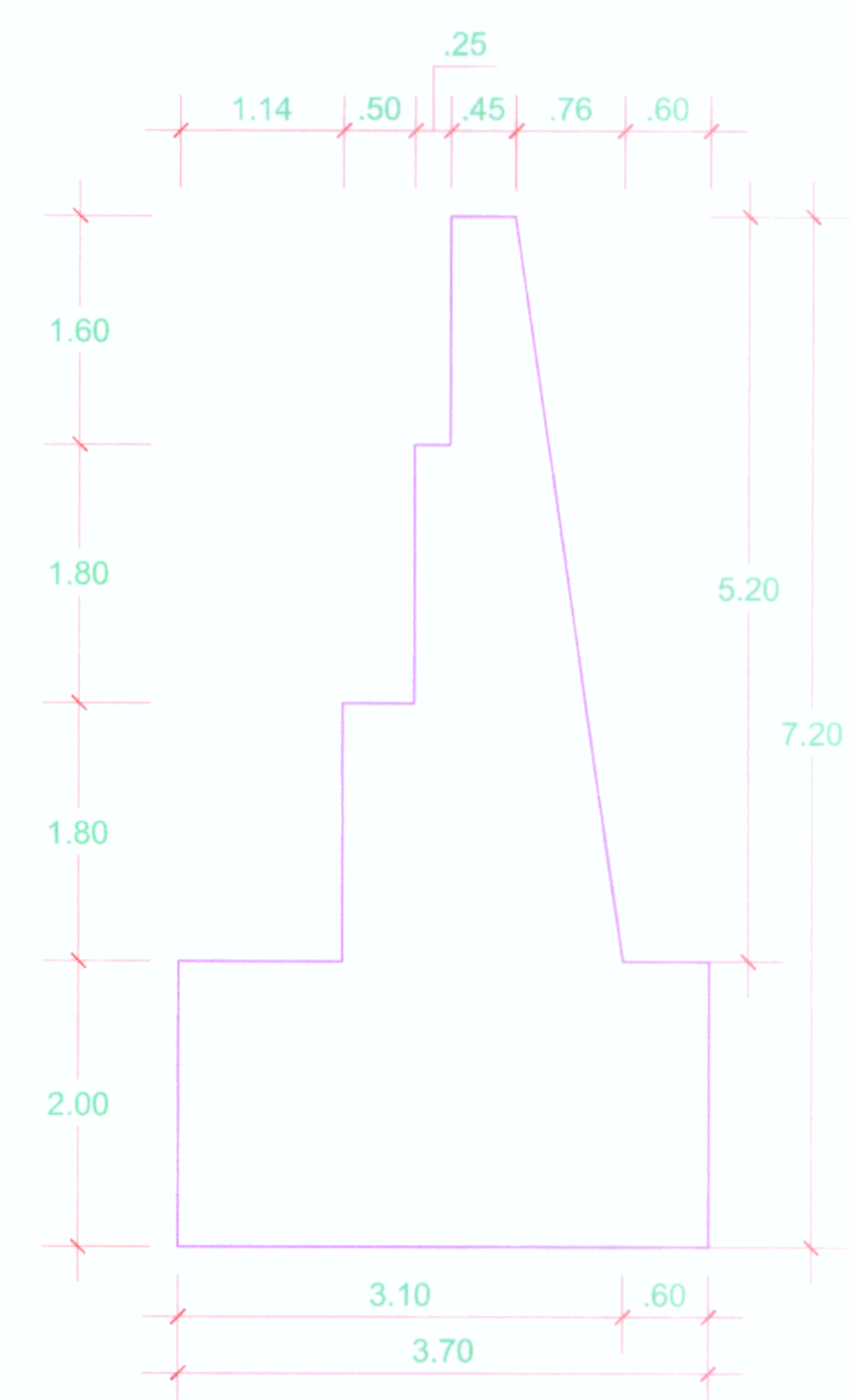
SECCIÓN B-B
ESC. 1/50



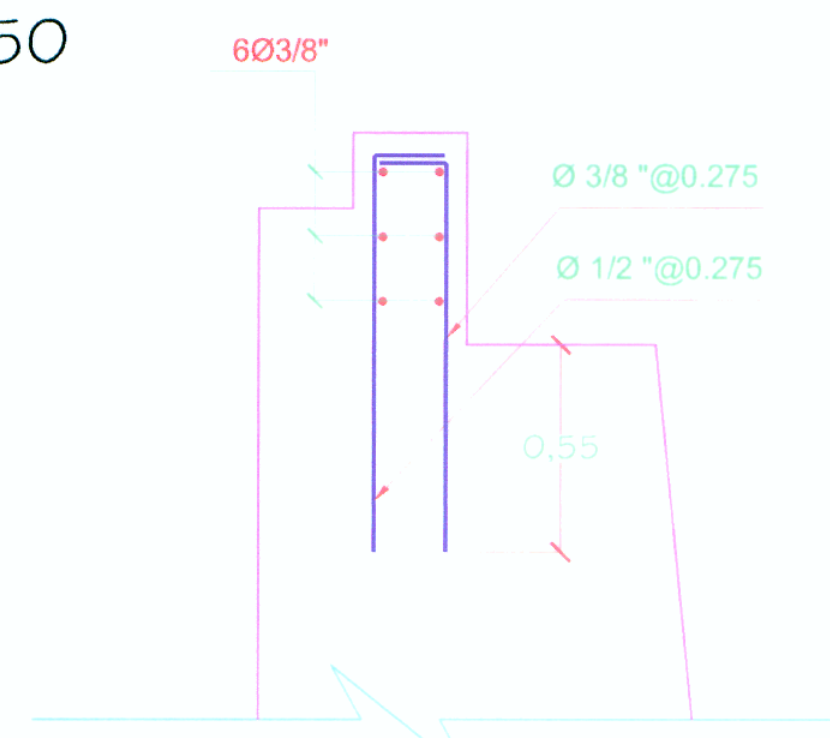
SECCIÓN B'-B'
ESC. 1/50



PLANTA
ESC. 1/75



SECCIÓN C-C
ESC. 1/50



REFUERZO EN PARAPETO
ESC. 1/20

ESPECIFICACIONES TÉCNICAS

CONCRETO: Cemento Portland ASTM C 150 Tipo I
 $f'c = 210 \text{ Kg/cm}^2$ Cajuela
 $f'c = 175 \text{ Kg/cm}^2 + 30\% \text{ PG}$ Estribos

ACERO DE REFUERZO: $F_y = 4,200 \text{ Kg/cm}^2$

METRADO AMBOS ESTRIBOS

CONCRETO:	$f'c = 210 \text{ Kg/cm}^2$	6.27 m3
	$f'c = 175 + 30\% \text{ PG}$	748.45 m3
ENCOFRADO:	En Estribo	504.48 m2
	En Parapeto	28.83 m2
REFUERZO:	$f_y = 4,200 \text{ Kg/cm}^2$	204.86 kg