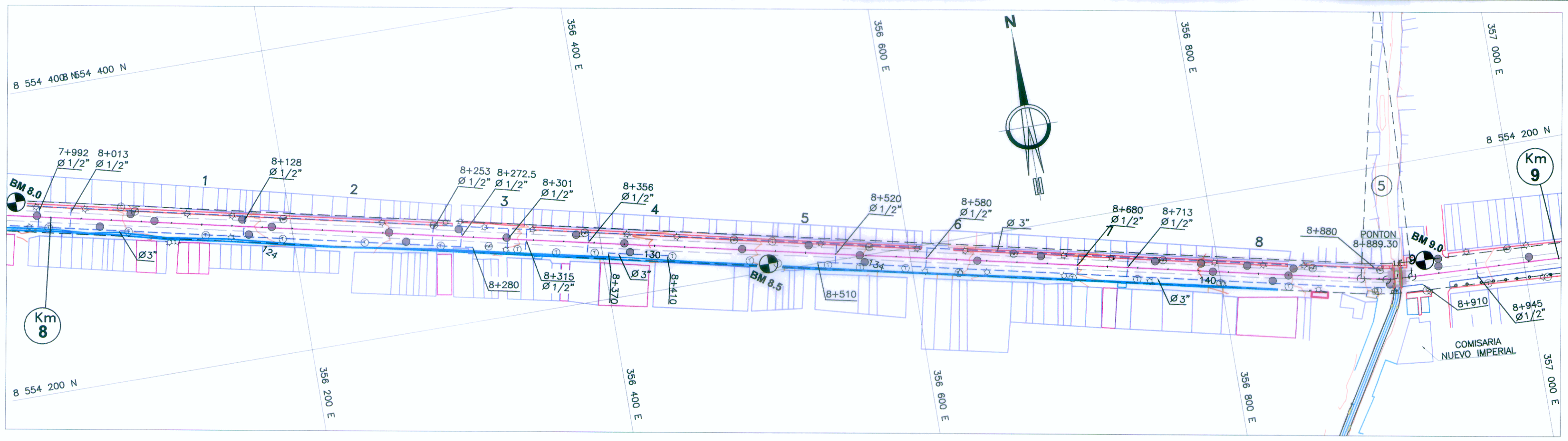


ESCALA
H : 1:2000



LEYENDA

- ALINEAMIENTO PROYECTADO
- BORDE DE PISTA EXISTENTE
- - - DERECHO DE VIA
- LIMITE DE PROPIEDAD
- VEREDA
- CANAL DE REGADIO EXISTENTE
- TERRENO DE CULTIVO
- TERRENO DE VACIO
- CURVAS PRINCIPALES
- CURVAS SECUNDARIAS
- ⊙ POSTE DE MEDIA TENSION
- ⊙ BUZON DE DESAGUE
- ⊙ POSTE DE TELEFONO
- ⊙ POSTE DE LUZ
- TUBERIA DE AGUA

0030

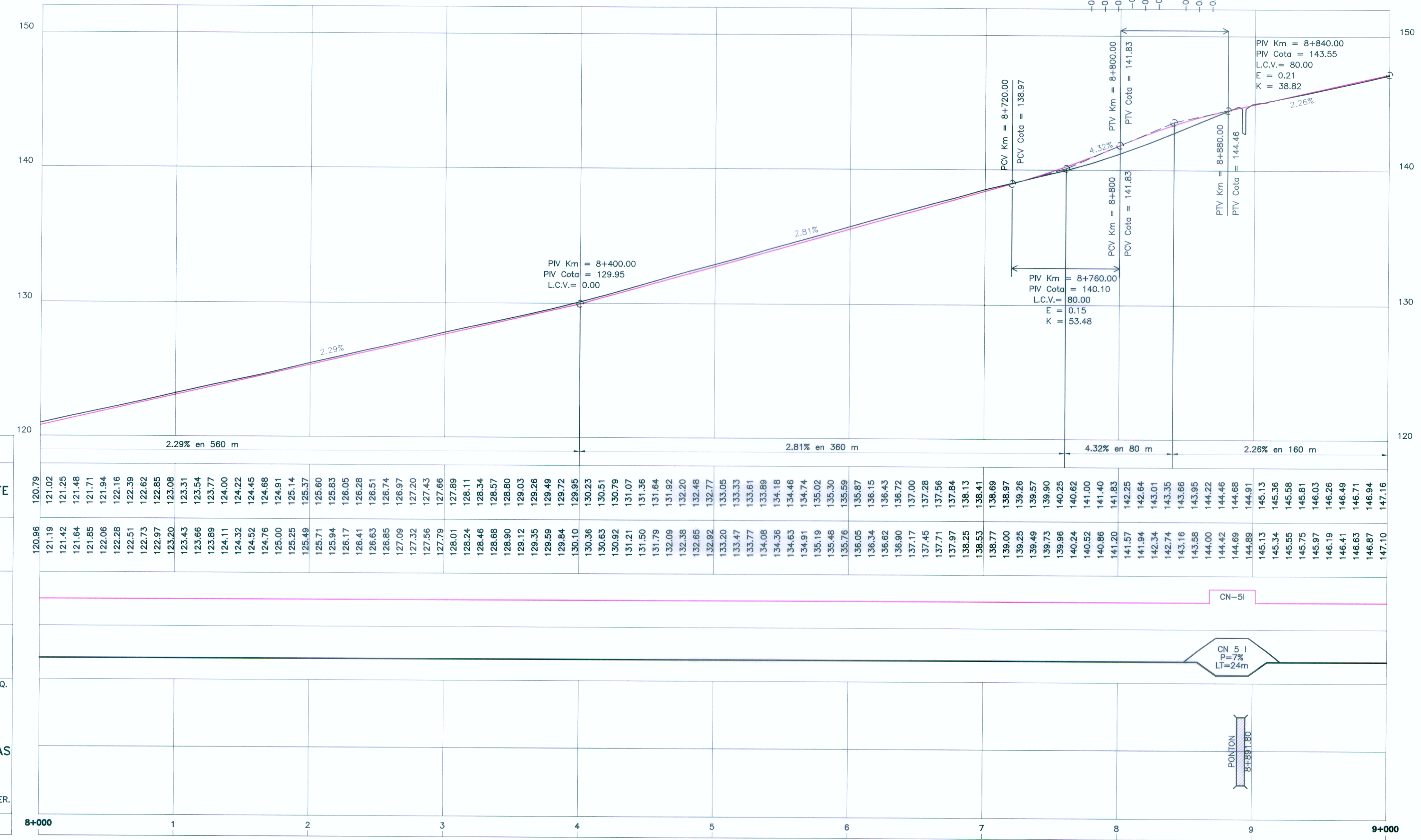
ELEMENTOS DE CURVAS																	
C.No	S	A.D.	R.	T.G.	L.C.	Lep.e.	T.S.	SC ó PC	PI	CS ó PT	S.T.	Lep.s.	S.A.	P %	COORDENADAS		
														NORTE	ESTE		
5	I	09°44'51"	200.00	17.054	34.026			8+867.96	8+885.01	8+901.98				0.6	7.0	8554125.950	356908.435

BM 8.5
COTA=132.36
Hito al lado de poste a 8.41 m a la Der.
Progresiva = 8+476.00

BM 9.0
COTA=145.063
Hito en esquina de vereda a 9.68 m a la Izq.
Progresiva = 8+911.60

UBICACIÓN DE BMS				
BMS	NORTE	ESTE	COTA	LADO
8.5	8554205.262	356506.944	132.360	D
9.0	8554134.461	356935.473	145.063	I

ESCALA
H : 1:2000
V : 1:200



LEYENDA

- SUBRASANTE PROYECTADA
- TERRENO EXISTENTE

PENDIENTES	
	2.29% en 560 m
	2.81% en 360 m
	4.32% en 80 m
	2.26% en 160 m

COTA DE SUBRASANTE	
120.79	121.02
121.19	121.25
121.42	121.48
121.64	121.71
121.85	121.94
122.06	122.16
122.28	122.39
122.51	122.62
122.73	122.85
122.97	123.08
123.20	123.31
123.43	123.54
123.66	123.77
123.89	124.00
124.11	124.22
124.32	124.45
124.52	124.68
124.76	124.91
125.00	125.14
125.25	125.37
125.46	125.60
125.71	125.83
125.94	126.05
126.17	126.28
126.41	126.51
126.63	126.74
126.85	126.97
127.09	127.20
127.32	127.43
127.56	127.66
127.79	127.89
128.01	128.11
128.24	128.34
128.46	128.57
128.68	128.80
128.90	129.03
129.12	129.26
129.35	129.49
129.59	129.72
129.84	129.95
130.10	130.23
130.36	130.51
130.63	130.79
130.92	131.07
131.21	131.36
131.50	131.64
131.79	131.92
132.09	132.20
132.38	132.48
132.65	132.77
132.92	133.05
133.20	133.33
133.47	133.61
133.77	133.89
134.08	134.18
134.36	134.46
134.63	134.74
134.91	135.02
135.19	135.30
135.48	135.59
135.76	135.87
136.05	136.15
136.34	136.43
136.62	136.72
136.90	137.00
137.17	137.28
137.45	137.56
137.71	137.84
137.97	138.13
138.25	138.41
138.53	138.69
138.77	138.97
139.00	139.25
139.25	139.57
139.49	139.90
139.73	140.25
139.96	140.62
140.24	141.00
140.52	141.40
140.86	141.80
141.20	141.85
141.57	142.25
141.84	142.64
142.34	143.01
142.74	143.35
143.16	143.66
143.58	143.95
144.00	144.22
144.42	144.46
144.68	144.68
144.89	144.91
145.13	145.13
145.34	145.36
145.55	145.58
145.75	145.81
145.97	146.03
146.19	146.26
146.41	146.49
146.63	146.71
146.87	146.94
147.10	147.16

COTA DE TERRENO	
120.96	121.19
121.42	121.64
121.85	122.06
122.28	122.51
122.73	122.97
123.20	123.66
123.43	123.89
123.66	124.11
123.89	124.32
124.11	124.52
124.32	124.76
124.52	125.00
124.76	125.25
125.00	125.46
125.25	125.71
125.46	125.94
125.71	126.17
125.94	126.41
126.17	126.63
126.41	126.85
126.63	127.09
126.85	127.32
127.09	127.56
127.32	127.79
127.56	128.01
127.79	128.24
128.01	128.46
128.24	128.68
128.46	128.90
128.68	129.12
128.90	129.35
129.12	129.59
129.35	129.84
129.59	130.10
130.10	130.36
130.36	130.63
130.63	130.92
130.92	131.21
131.21	131.50
131.50	131.79
131.79	132.09
132.09	132.38
132.38	132.65
132.65	132.92
132.92	133.20
133.20	133.47
133.47	133.77
133.77	134.08
134.08	134.36
134.36	134.63
134.63	134.91
134.91	135.19
135.19	135.48
135.48	135.76
135.76	136.05
136.05	136.34
136.34	136.62
136.62	136.90
136.90	137.17
137.17	137.45
137.45	137.71
137.71	137.97
137.97	138.25
138.25	138.53
138.53	138.77
138.77	139.00
139.00	139.25
139.25	139.49
139.49	139.73
139.73	139.96
139.96	140.24
140.24	140.52
140.52	140.86
140.86	141.20
141.20	141.57
141.57	141.84
141.84	142.34
142.34	142.74
142.74	143.16
143.16	143.58
143.58	144.00
144.00	144.42
144.42	144.68
144.68	144.89
144.89	145.13
145.13	145.34
145.34	145.55
145.55	145.75
145.75	145.97
145.97	146.19
146.19	146.41
146.41	146.63
146.63	146.87
146.87	147.10

NOTA :
1.- LA ESCALA INDICADA ES PARA EL FORMATO A-1, PARA A-3 CONSIDERAR EL DOBLE

PROYECTISTA:
CESEL INGENIEROS
 CERTIFICADO EN: ISO 9001, ISO 14001, OHSAS 18001
 Diseñó: ING. C. SALCEDO D. CIP 72062
 Dibujó: A. C. M.
 Verificó: ING. O. TORRES R. CIP 15227
 Presentó: ING. O. TORRES R. CIP 15227

REVISIONES		
Nº	FECHA	DESCRIPCIÓN
0	19/04/11	EMITIDO PARA CONSTRUCCIÓN

ESTUDIO DEFINITIVO DE REHABILITACIÓN Y MEJORAMIENTO
DE LA CARRETERA CAÑETE - LUNAHUANÁ
 CONTRATO N° 051 - 2010 - MTC/20

PLAN: **PLANTA Y PERFIL LONGITUDINAL**
 UBICACION: **Km 8+000 - Km 9+000**
 ESCALA: **INDICADA**
 FECHA: **ABRIL 2011**
 PLANO N°: **051-10-PP-004**
 REV. 0