

ELEMENTOS DE CURVAS

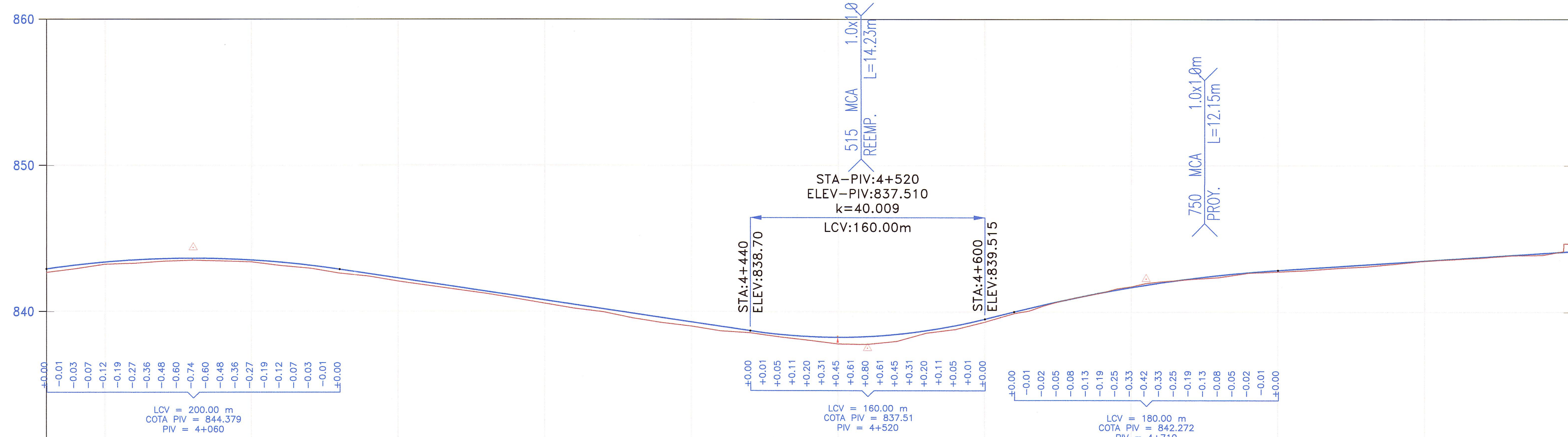
Nº	SEN	ANGULO			RADIO	T	LC	EX.	PC / TS	SC	PI	CS	PT / ST	COORDENADAS TS		COORDENADAS SC		COORDENADAS PI		COORDENADAS CS		COORDENADAS ST	
		Grad	Min	Seg										Norte	Este	Norte	Este	Norte	Este	Norte	Este	Norte	Este
PP-07	I	00	05	01.02	Quiebre						04+047.25			9.328,441.339	269,914.900								
PI-01	I	10	19	45.80	750.00	67.789	135.211	3.057	4+621.009		04+688.80		4+766.221	9.327,937.359	269,640.677			9.327,877.813	269,608.277		9.327,813.423	269,587.079	
PP-08	I	00	07	38.53	Quiebre						04+999.42			9.327,582.418	269,511.031								

BM-4.0
841.566
Km.04+023, Lado Der a 14.80m.
Sobre Hilo de Concreto

BM-4.5
837.550
Km.04+482, Lado Der a 8.80m.
Sobre Hilo de Concreto

BM-5.0
843.894
Km.05+023, Lado Der a 13.40m.
Sobre Hilo de Concreto

PERFIL
ESCALAS
HORIZONTAL = 1/2000
VERTICAL = 1/200



PENDIENTES	COTA DE TERRENO	COTA DE SUBRASANTE	ALINEAMIENTO	KILOMETRAJE
1.480% EN 360.0 MTS.	842.898, 842.658, 843.165, 842.918, 843.371, 843.218, 843.519, 843.288, 843.607, 843.429, 843.635, 843.499, 843.604, 843.449, 843.514, 843.379, 843.364, 843.128, 843.154, 842.948, 842.886, 842.608, 842.587, 842.408, 842.288, 842.068, 841.990, 841.788, 841.691, 841.508, 841.392, 841.239, 841.094, 840.909, 840.795, 840.569, 840.497, 840.229, 840.198, 839.989, 839.899, 839.569, 839.601, 839.249, 839.302, 839.014, 839.003, 838.684, 838.705, 838.554, 838.456, 838.274, 838.308, 838.044, 838.259, 837.798, 838.310, 837.768, 838.461, 837.968, 838.713, 838.538, 839.064, 838.798, 839.515, 839.308, 840.016, 839.898, 840.497, 840.428, 840.936, 840.938, 841.334, 841.328, 841.690, 841.738, 842.006, 842.078, 842.280, 842.238, 842.512, 842.378, 842.703, 842.668, 842.853, 842.758, 842.982, 842.848, 843.112, 842.998, 843.241, 843.098, 843.370, 843.288, 843.489, 843.488, 843.628, 843.596, 843.758, 843.708, 843.887, 843.868, 844.016, 843.888, 844.145, 844.669	842.898, 842.658, 843.165, 842.918, 843.371, 843.218, 843.519, 843.288, 843.607, 843.429, 843.635, 843.499, 843.604, 843.449, 843.514, 843.379, 843.364, 843.128, 843.154, 842.948, 842.886, 842.608, 842.587, 842.408, 842.288, 842.068, 841.990, 841.788, 841.691, 841.508, 841.392, 841.239, 841.094, 840.909, 840.795, 840.569, 840.497, 840.229, 840.198, 839.989, 839.899, 839.569, 839.601, 839.249, 839.302, 839.014, 839.003, 838.684, 838.705, 838.554, 838.456, 838.274, 838.308, 838.044, 838.259, 837.798, 838.310, 837.768, 838.461, 837.968, 838.713, 838.538, 839.064, 838.798, 839.515, 839.308, 840.016, 839.898, 840.497, 840.428, 840.936, 840.938, 841.334, 841.328, 841.690, 841.738, 842.006, 842.078, 842.280, 842.238, 842.512, 842.378, 842.703, 842.668, 842.853, 842.758, 842.982, 842.848, 843.112, 842.998, 843.241, 843.098, 843.370, 843.288, 843.489, 843.488, 843.628, 843.596, 843.758, 843.708, 843.887, 843.868, 844.016, 843.888, 844.145, 844.669	PP-07-I R=0.00 Δ=00'05'01"	03+960
-1.493% EN 460.0 MTS.			PI-01-I R=750.00 Δ=10'19'46"	
2.506% EN 190.0 MTS.				
0.646% EN 450.0 MTS.			PP-08-I R=0.00 Δ=00'17'39"	

LEYENDA :

- ALCANTARILLA EXISTENTE (E) O PROYECTADA (P)
- SEÑALES INFORMATIVAS
- POSTES KILOMETRICOS
- SEÑALES REGLAMENTARIAS
- SEÑALES PREVENTIVAS
- CUNETA PROYECTADA
- SUBDRENAJE PROYECTADO
- PEDRAPLEN
- GUARDAVIA
- EJE PROYECTADO
- CARRIL DE ASCENSO
- EJE ACCESOS
- BORDE CARRETERA EXISTENTE
- CERCO
- TORRE ALTA TENSION
- POSTE DE LUZ
- BUZON
- SEÑAL

ING. ENRIQUE COX CASSINELLI
Jefe de Proyecto
C.I.P. N° 15688
Especialista en Hidrología e Hidráulica

JNR CONSULTORES S.A.