

CUADRO PUNTOS DE CONTROL GPS

N°	CODIGO	COORDENADAS UTM	
		NORTE	ESTE
1	GPS-7	9'318,187.412	266,256.411
2	GPS-8	9'317,922.043	266,288.819

LEYENDA :

- ALCANTARILLA EXISTENTE (E) O PROYECTADA (P)
- SEÑALES INFORMATIVAS
- POSTES KILOMETRICOS
- SEÑALES REGLAMENTARIAS
- SEÑALES PREVENTIVAS
- CUNETA EXISTENTE (E) O PROYECTADA (P)
- GUARDAVIA
- EJE PROYECTADO
- BORDE PROYECTADO
- CARRIL DE ASCENSO
- EJE ACCESOS
- BORDE ACCESOS
- BORDE CARRETERA EXISTENTE
- CERCO
- TORRE ALTA TENSION
- POSTE DE LUZ
- BUZON
- SEÑAL

ELEMENTOS DE CURVAS

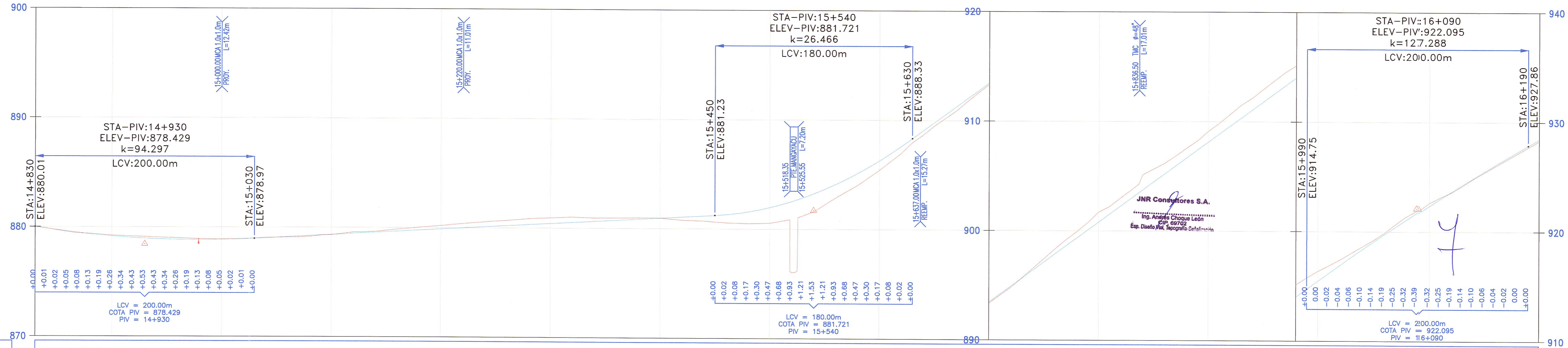
N°	SEN	ANGULO			RADIO	T	LC	EX.	SOBRE ANCHO	PERALTE (%)	PC / TS	SC	PI	CS	PT / ST	COORDENADAS PC/TS		COORDENADAS SC		COORDENADAS PI		COORDENADAS CS		COORDENADAS PT/ST	
		Grad	Min	Seg												Norte	Este	Norte	Este	Norte	Este	Norte	Este	Norte	Este
PI-14	I	17	21	33.49	100.00	15.268	30.298	1.159	0.90	6.50	15+054.346	15+084.346	15+100.55	15+114.644	15+144.644	9,318,537.803	266,331.123	9,318,512.857	266,314.512	9,318,500.674	266,303.626	9,318,484.363	266,304.562	9,318,454.499	266,302.033
PI-15	D	03	57	53.61	47.00	1.627	3.252	0.028	1.80	8.00	15+614.706	15+654.706	15+658.58	15+657.958	15+697.958	9,317,984.717	266,285.628	9,317,945.652	266,278.877	9,317,940.871	266,284.316	9,317,942.790	266,277.333	9,317,915.521	266,248.509
PI-16	I	15	07	54.94	110.00	14.611	29.051	0.966	0.80	6.00	15+751.826	15+781.826	15+797.17	15+810.877	15+840.877	9,317,884.395	266,204.544	9,317,865.982	266,180.891	9,317,858.197	266,167.539	9,317,843.573	266,162.535	9,317,816.759	266,149.137
PI-17	I	50	29	10.57	60.00	28.289	52.869	6.335	1.80	8.00	15+881.611	15+901.611	15+941.26	15+954.480	15+994.480	9,317,797.809	266,140.722	9,317,759.866	266,128.697	9,317,725.019	266,108.398	9,317,711.900	266,146.533	9,317,691.031	266,180.426

BM-15.0
879.003
Km.14+940, Lado Izq a 10.30m.
Sobre Hito de Concreto

BM-15.5
881.486
Km.15+466, Lado Izq a 7.20m.
Sobre Hito de Concreto

BM-16.0
912.371
Km.15+930, Lado Der a 9.50m.
Sobre Hito de Concreto

PERFIL
ESCALAS
HORIZONTAL = 1/2000
VERTICAL = 1/200



PENDIENTES	COTA DE TERRENO	COTA DE SUBRASANTE	ALINEAMIENTO	KILOMETRAJE
-1.581% en 450.0mts	880.010, 880.021, 879.857, 879.866, 879.583, 879.546, 879.352, 879.372, 879.163, 879.222, 879.016, 879.142, 878.912, 879.072, 878.850, 879.005, 878.831, 878.915, 878.854, 878.905, 878.920, 878.945, 879.022, 879.045, 879.130, 879.105, 879.238, 879.155, 879.346, 879.335, 879.454, 879.375, 879.562, 879.638, 879.670, 879.848, 879.778, 880.028, 879.886, 880.198, 879.994, 880.378, 880.102, 880.548, 880.210, 880.688, 880.317, 880.858, 880.425, 880.338, 880.533, 881.028, 880.641, 880.948, 880.749, 880.968, 880.857, 880.982, 880.965, 880.972, 881.073, 880.792, 881.181, 880.722, 881.308, 880.572, 881.567, 880.512, 881.977, 880.549, 882.538, 878.057, 883.251, 881.599, 884.114, 882.883, 885.129, 884.033, 886.295, 885.433, 887.612, 886.987, 889.061, 888.657, 890.528, 890.193, 891.998, 891.743, 893.466, 893.353, 894.934, 894.818, 896.402, 896.558, 897.870, 898.318, 899.338, 899.915, 900.806, 901.715, 902.275, 903.005, 903.743, 905.132, 905.211, 906.182, 906.679, 907.562, 908.147, 909.123, 909.615, 910.703, 911.083, 912.173, 912.552, 913.738, 914.020, 915.148, 915.484, 916.368, 916.921, 917.410, 918.326, 918.590, 919.700, 919.830, 921.042, 921.340, 922.353, 922.622, 923.633, 923.592, 924.881, 924.842, 926.098, 925.999, 927.283, 927.139, 928.441, 928.289	880.010, 880.021, 879.857, 879.866, 879.583, 879.546, 879.352, 879.372, 879.163, 879.222, 879.016, 879.142, 878.912, 879.072, 878.850, 879.005, 878.831, 878.915, 878.854, 878.905, 878.920, 878.945, 879.022, 879.045, 879.130, 879.105, 879.238, 879.155, 879.346, 879.335, 879.454, 879.375, 879.562, 879.638, 879.670, 879.848, 879.778, 880.028, 879.886, 880.198, 879.994, 880.378, 880.102, 880.548, 880.210, 880.688, 880.317, 880.858, 880.425, 880.338, 880.533, 881.028, 880.641, 880.948, 880.749, 880.968, 880.857, 880.982, 880.965, 880.972, 881.073, 880.792, 881.181, 880.722, 881.308, 880.572, 881.567, 880.512, 881.977, 880.549, 882.538, 878.057, 883.251, 881.599, 884.114, 882.883, 885.129, 884.033, 886.295, 885.433, 887.612, 886.987, 889.061, 888.657, 890.528, 890.193, 891.998, 891.743, 893.466, 893.353, 894.934, 894.818, 896.402, 896.558, 897.870, 898.318, 899.338, 899.915, 900.806, 901.715, 902.275, 903.005, 903.743, 905.132, 905.211, 906.182, 906.679, 907.562, 908.147, 909.123, 909.615, 910.703, 911.083, 912.173, 912.552, 913.738, 914.020, 915.148, 915.484, 916.368, 916.921, 917.410, 918.326, 918.590, 919.700, 919.830, 921.042, 921.340, 922.353, 922.622, 923.633, 923.592, 924.881, 924.842, 926.098, 925.999, 927.283, 927.139, 928.441, 928.289	880.010, 880.021, 879.857, 879.866, 879.583, 879.546, 879.352, 879.372, 879.163, 879.222, 879.016, 879.142, 878.912, 879.072, 878.850, 879.005, 878.831, 878.915, 878.854, 878.905, 878.920, 878.945, 879.022, 879.045, 879.130, 879.105, 879.238, 879.155, 879.346, 879.335, 879.454, 879.375, 879.562, 879.638, 879.670, 879.848, 879.778, 880.028, 879.886, 880.198, 879.994, 880.378, 880.102, 880.548, 880.210, 880.688, 880.317, 880.858, 880.425, 880.338, 880.533, 881.028, 880.641, 880.948, 880.749, 880.968, 880.857, 880.982, 880.965, 880.972, 881.073, 880.792, 881.181, 880.722, 881.308, 880.572, 881.567, 880.512, 881.977, 880.549, 882.538, 878.057, 883.251, 881.599, 884.114, 882.883, 885.129, 884.033, 886.295, 885.433, 887.612, 886.987, 889.061, 888.657, 890.528, 890.193, 891.998, 891.743, 893.466, 893.353, 894.934, 894.818, 896.402, 896.558, 897.870, 898.318, 899.338, 899.915, 900.806, 901.715, 902.275, 903.005, 903.743, 905.132, 905.211, 906.182, 906.679, 907.562, 908.147, 909.123, 909.615, 910.703, 911.083, 912.173, 912.552, 913.738, 914.020, 915.148, 915.484, 916.368, 916.921, 917.410, 918.326, 918.590, 919.700, 919.830, 921.042, 921.340, 922.353, 922.622, 923.633, 923.592, 924.881, 924.842, 926.098, 925.999, 927.283, 927.139, 928.441, 928.289	14+830, 900, 100, 200, 300, 400, 500, 600, 700, 800, 900, 100, 150, 16+200

REVISIÓN:

MTC **PROVIAS NACIONAL**
Ministerio de Transportes y Comunicaciones

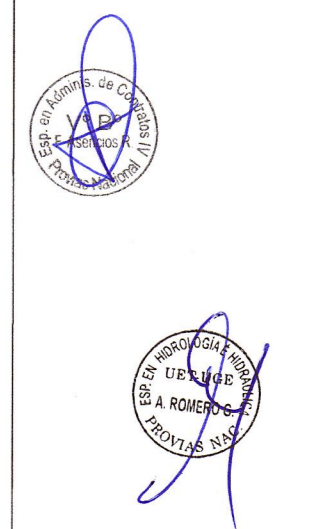
CONTRATO DE CONSULTORIA DE OBRA
N° 066-2010-MTC/20

TITULO DEL PROYECTO
ELABORACION DEL ESTUDIO DE FACTIBILIDAD Y DEFINITIVO DE LA CARRETERA
RODRIGUEZ DE MENDOZA - EMPALME RUTA PB-5N (LA CALZADA), TRAMO: SELVA ALEGRE - LA CALZADA

DESIGNACION :
SISTEMA DE DRENAJE PROYECTADO
Km. 14+830 Km. 16+200

JNR CONSULTORES S.A.
Calle Roca de Vergalio 153 - Magdalena del Mar
Telefono: 462-4440

JEFE PROYECTO : E. COX CASSINELLI	APROBADO : H. CABANILLAS	ESCALA : INDICADA	PLANO N° SDP
ING. TRAZO : A. CHOQUE LEON	DIBUJO : H. CABANILLAS	FECHA : 06/12	16



JNR CONSULTORES S.A.
Ing. ENRIQUE COX CASSINELLI
Jefe de Proyecto
C.I.P. 22654