

ELEMENTOS DE CURVAS

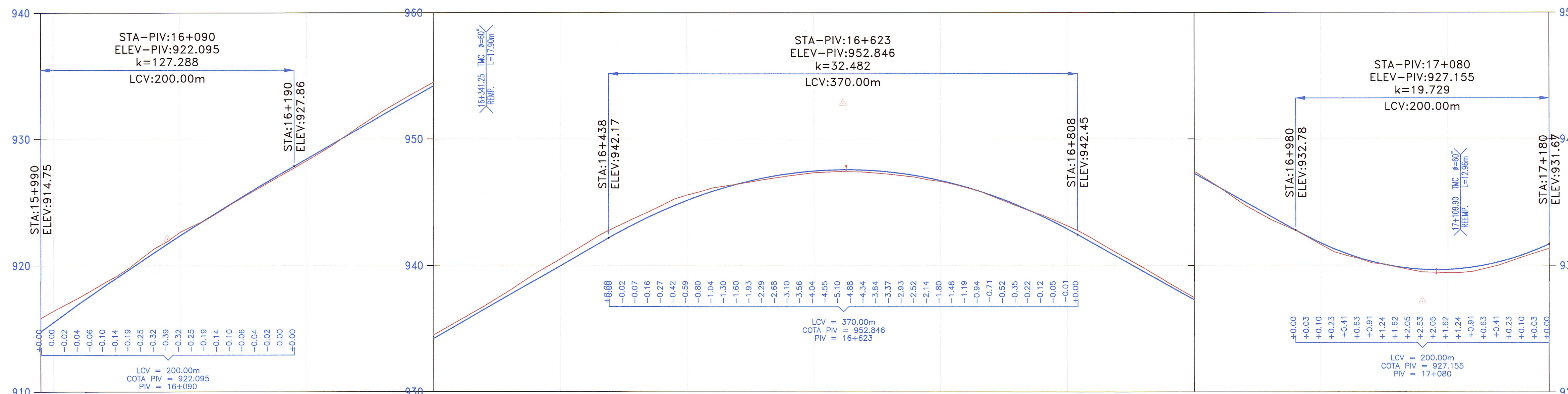
Nº	SEN	ANGULO			RADIO	T	LC	EX.	SOBRE ANCHO	PERALTE (%)	PC / TS	SC	PI	CS	PT / ST	COORDENADAS PC/TS		COORDENADAS SC		COORDENADAS PI		COORDENADAS CS		COORDENADAS PT/ST	
		Grad	Min	Seg												Norte	Este	Norte	Este	Norte	Este	Norte	Este	Norte	Este
PI-18	D	65	55	46.00	60.00	14.811	29.041	1.801	1.80	8.00	16+035.348	16+075.348	16+094.90	16+104.390	16+144.390	9,317,673.590	266,217.388	9,317,652.721	266,251.280	9,317,648.175	266,271.247	9,317,628.273	266,266.423	9,317,588.632	266,270.009
PI-19	D	46	57	33.00	70.00	8.731	17.372	0.542	1.30	7.50	16+414.633	16+454.633	16+465.40	16+472.004	16+512.004	9,317,318.447	266,264.393	9,317,278.860	266,269.782	9,317,267.693	266,263.338	9,317,263.115	266,252.650	9,317,233.823	266,225.523
PI-20	I	49	02	36.00	165.00	60.646	116.234	10.792	0.70	5.00	16+683.505	16+708.505	16+771.34	16+824.739	16+849.739	9,317,119.401	266,097.773	9,317,102.261	266,079.583	9,317,060.796	266,032.342	9,316,997.959	266,033.953	9,316,972.967	266,033.711
PI-21	D	29	58	12.00	135.00	23.027	45.615	1.950	0.70	5.50	16+970.192	16+995.192	17+018.88	17+040.807	17+065.807	9,316,852.528	266,035.589	9,316,827.541	266,035.207	9,316,803.851	266,036.348	9,316,783.509	266,024.154	9,316,761.303	266,012.689

BM-16.0  
912.371  
Km.15+930, Lado Der a 9.50m.  
Sobre Hit de Concreto

BM-16.5  
943.938  
Km.16+440, Lado Izq a 8.50m.  
Sobre Hit de Concreto

BM-17.0  
932.228  
Km.17+010, Lado Izq a 7.70m.  
Sobre Hit de Concreto

PERFIL  
ESCALAS  
HORIZONTAL = 1/2000  
VERTICAL = 1/200



PENDIENTES	COTA DE TERRENO	COTA DE SUBRASANTE	ALINEAMIENTO	KILOMETRAJE		
7.341% en 550.0mts	914.754, 915.298, 915.484, 916.368, 916.921, 917.410, 918.590, 918.326, 918.590, 919.700, 919.830, 921.042, 921.340, 922.353, 922.622, 923.633, 923.592, 924.881, 924.842, 926.098, 925.999, 927.283, 927.139, 928.441, 928.289, 929.595, 929.489, 930.749, 930.888, 931.903, 932.188, 933.057, 933.368, 934.210, 934.485, 935.364, 935.625, 936.518, 936.755, 937.672, 937.995, 938.826, 939.360, 939.980, 940.510, 941.134, 941.710, 942.287, 942.854, 943.367, 943.824, 944.324, 944.754, 945.158, 945.572, 946.868, 946.137, 946.456, 946.437, 946.920, 946.787, 947.261, 947.087, 947.479, 947.347, 947.574, 947.437, 947.546, 947.397, 947.394, 947.217, 947.120, 946.987, 946.722, 946.647, 946.201, 946.167, 945.557, 945.517, 944.790, 944.717, 943.899, 943.997, 942.886, 943.141, 941.771, 942.101, 940.647, 940.931, 939.523, 939.811, 938.399, 938.598, 937.274, 937.438, 936.150, 936.158, 935.026, 934.757, 933.901, 933.647, 932.777, 932.747, 931.754, 931.637, 930.934, 930.783, 930.316, 930.203, 929.902, 929.863, 929.690, 929.483, 929.681, 929.423, 929.874, 929.533, 930.270, 930.013, 930.869, 930.703, 931.671, 931.333	914.754, 915.298, 915.484, 916.368, 916.921, 917.410, 918.590, 918.326, 918.590, 919.700, 919.830, 921.042, 921.340, 922.353, 922.622, 923.633, 923.592, 924.881, 924.842, 926.098, 925.999, 927.283, 927.139, 928.441, 928.289, 929.595, 929.489, 930.749, 930.888, 931.903, 932.188, 933.057, 933.368, 934.210, 934.485, 935.364, 935.625, 936.518, 936.755, 937.672, 937.995, 938.826, 939.360, 939.980, 940.510, 941.134, 941.710, 942.287, 942.854, 943.367, 943.824, 944.324, 944.754, 945.158, 945.572, 946.868, 946.137, 946.456, 946.437, 946.920, 946.787, 947.261, 947.087, 947.479, 947.347, 947.574, 947.437, 947.546, 947.397, 947.394, 947.217, 947.120, 946.987, 946.722, 946.647, 946.201, 946.167, 945.557, 945.517, 944.790, 944.717, 943.899, 943.997, 942.886, 943.141, 941.771, 942.101, 940.647, 940.931, 939.523, 939.811, 938.399, 938.598, 937.274, 937.438, 936.150, 936.158, 935.026, 934.757, 933.901, 933.647, 932.777, 932.747, 931.754, 931.637, 930.934, 930.783, 930.316, 930.203, 929.902, 929.863, 929.690, 929.483, 929.681, 929.423, 929.874, 929.533, 930.270, 930.013, 930.869, 930.703, 931.671, 931.333	Δ=65°55'46" R=60.00 PI-18-D	Δ=46°57'33" R=70.00 PI-19-D	PI-20-I R=165.00 Δ=49°02'36"	Δ=29°58'12" R=135.00 PI-21-D

LEYENDA :

- ALCANTARILLA EXISTENTE (E) O PROYECTADA (P)
- SEÑALES INFORMATIVAS
- POSTES KILOMETRICOS
- SEÑALES REGLAMENTARIAS
- SEÑALES PREVENTIVAS
- CUNETA PROYECTADA
- SUBDRENAJE
- EJE PROYECTADO
- BORDE PROYECTADO
- CARRIL DE ASCENSO
- EJE ACCESOS
- BORDE ACCESOS
- BORDE CARRETERA EXISTENTE
- CERCO
- TORRE ALTA TENSION
- POSTE DE LUZ
- BUZON
- SEÑAL

REVISIÓN:


**MTC** Ministerio de Transportes y Comunicaciones

**PROVIAS NACIONAL**

CONTRATO DE CONSULTORIA DE OBRA  
Nº 066-2010-MTC/20

TITULO DEL PROYECTO  
ELABORACION DEL ESTUDIO DE FACTIBILIDAD Y DEFINITIVO DE LA CARRETERA  
RODRIGUEZ DE MENDOZA - EMPALME RUTA PE-5N (LA CALZADA), TRAMO: SELVA ALEGRE - LA CALZADA

DESIGNACION :  
SISTEMA DE DRENAJE PROYECTADO  
Km. 15+990 Km. 17+180

**JNR** JNR CONSULTORES S.A.  
Calle Roca de Vergallo 153 - Magdalena del Mar  
Telefono: 462-4440

JEFE PROYECTO : E. COX CASSINELLI	APROBADO : H. CABANILLAS	ESCALA : INDICADA	PLANO Nº SDP
ING. TRAZO : A. CHOQUE LEON	DIBUJO : H. CABANILLAS	FECHA : 06/12	17