

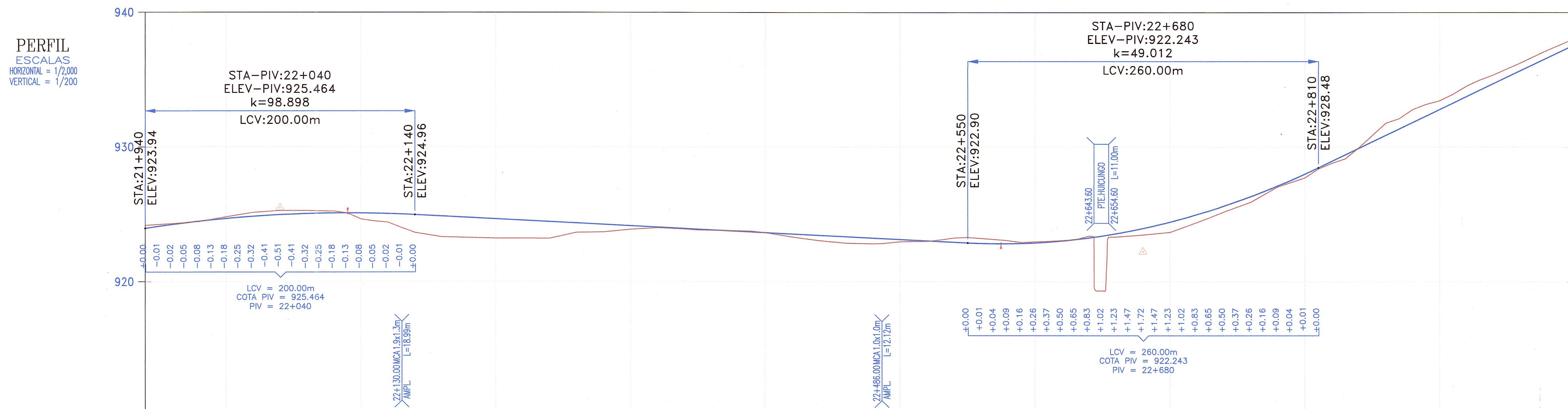
ELEMENTOS DE CURVAS

Nº	SEN	ANGULO			RADIO	T	LC	EX.	SOBRE ANCHO	PERALTE (%)	Le	Ls	P	k	LTan	S Tan	PC / TS	SC	PI	CS	PT / ST	COORDENADAS PC/TS		COORDENADAS SC		COORDENADAS PI		COORDENADAS CS		COORDENADAS PT/ST	
		Grad	Min	Seg																		Norte	Este	Norte	Este	Norte	Este	Norte	Este	Norte	Este
PI-37	D	90	02	43.00	45.00	28.657	51.036	8.350	1.80	8.00	20.00	20.00	0.370	9.984	13.368	6.698	22+049.431	22+069.431	22+105.14	22+120.467	22+140.467	9,312,231.073	265,762.172	9,312,211.222	265,764.219	9,312,176.234	265,771.969	9,312,171.667	265,736.425	9,312,166.864	265,717.055
PI-38	D	15	02	26.00	280.00	36.966	73.507	2.430	0.50	4.00							22+333.402	22+370.37	22+406.910	22+406.910	9,312,134.413	265,526.869			9,312,128.195	265,490.429			9,312,131.647	265,453.624	
PI-39	I	09	37	55.78	800.00	67.404	134.490	2.835	0.30	3.00							22+511.988	22+579.39	22+646.478	22+646.478	9,312,141.460	265,349.005			9,312,147.755	265,281.896			9,312,142.732	265,214.679	
PI-40	D	36	34	33.00	180.00	43.258	84.906	5.125	0.70	5.00	30.00	30.00	0.208	14.997	20.007	10.007	22+791.697	22+821.697	22+866.25	22+906.604	22+936.604	9,312,131.910	265,069.864	9,312,130.507	265,039.906	9,312,126.355	264,995.518	9,312,150.878	264,958.288	9,312,166.195	264,932.504

BM-22.0  
924.776  
Km.21+993, Lado Der a 9.30m.  
Sobre H/C Costado Poste A.Tension

BM-22.5  
922.205  
Km.22+498, Lado Der a 16.00m.  
Sobre Hito de Concreto

BM-23.0  
934.225  
Km.22+900, Lado Izq a 5.50m.  
Sobre Hito de Concreto



PENDIENTES	COTA DE TERRENO	COTA DE SUBRASANTE	ALINEAMIENTO	KILOMETRAJE			
1.519% en 370.0mts	923.945, 924.167, 924.229, 924.292, 924.472, 924.442, 924.674, 924.792, 924.837, 925.125, 924.988, 925.265, 925.040, 925.265, 925.081, 925.225, 925.081, 924.635, 925.041, 924.405, 924.961, 923.645, 924.860, 923.325, 924.759, 923.275, 924.659, 923.225, 924.558, 923.224, 924.457, 923.214, 924.357, 923.654, 924.256, 923.694, 924.155, 923.884, 924.055, 924.004, 923.954, 923.914, 923.853, 923.814, 923.753, 923.784, 923.652, 923.644, 923.551, 923.324, 923.451, 923.056, 923.350, 922.866, 923.249, 922.826, 923.149, 922.976, 923.048, 923.015, 922.947, 923.255, 922.857, 923.225, 922.838, 923.065, 922.900, 922.963, 923.044, 923.073, 923.270, 923.403, 923.578, 923.333, 923.967, 923.483, 924.437, 923.683, 924.989, 924.403, 925.623, 925.189, 926.339, 925.919, 927.136, 927.069, 928.015, 927.739, 928.965, 928.809, 929.925, 929.960, 930.885, 931.790, 931.846, 932.810, 932.806, 933.450, 933.766, 934.531, 934.726, 935.371, 935.687, 936.261, 936.647, 937.211, 937.607, 938.074	923.945, 924.167, 924.229, 924.292, 924.472, 924.442, 924.674, 924.792, 924.837, 925.125, 924.988, 925.265, 925.040, 925.265, 925.081, 925.225, 925.081, 924.635, 925.041, 924.405, 924.961, 923.645, 924.860, 923.325, 924.759, 923.275, 924.659, 923.225, 924.558, 923.224, 924.457, 923.214, 924.357, 923.654, 924.256, 923.694, 924.155, 923.884, 924.055, 924.004, 923.954, 923.914, 923.853, 923.814, 923.753, 923.784, 923.652, 923.644, 923.551, 923.324, 923.451, 923.056, 923.350, 922.866, 923.249, 922.826, 923.149, 922.976, 923.048, 923.015, 922.947, 923.255, 922.857, 923.225, 922.838, 923.065, 922.900, 922.963, 923.044, 923.073, 923.270, 923.403, 923.578, 923.333, 923.967, 923.483, 924.437, 923.683, 924.989, 924.403, 925.623, 925.189, 926.339, 925.919, 927.136, 927.069, 928.015, 927.739, 928.965, 928.809, 929.925, 929.960, 930.885, 931.790, 931.846, 932.810, 932.806, 933.450, 933.766, 934.531, 934.726, 935.371, 935.687, 936.261, 936.647, 937.211, 937.607, 938.074	Δ=90°26'43" R=45.00 PI=37-D	Δ=15°02'30" R=280.00 PI=38-D	PI=39-I R=800.00 Δ=09°37'56"	Δ=36°34'33" R=180.00 PI=40-D	21+940, 22, 100, 200, 300, 400, 500, 600, 700, 800, 900, Km

LEYENDA :

- PROG. TIPO DIMEN LONGITUD
- ALCANTARILLA EXISTENTE (E) O PROYECTADA (P)
- SEÑALES INFORMATIVAS (I-5, 6, 7, 18)
- POSTES KILOMETRICOS (K-30)
- SEÑALES REGLAMENTARIAS (R-2A)
- SEÑALES PREVENTIVAS
- CUNETA PROYECTADA
- SUBDRENAJE
- EJE PROYECTADO
- BORDE PROYECTADO
- CARRIL DE ASCENSO
- EJE ACCESOS
- BORDE ACCESOS
- BORDE CARRETERA EXISTENTE
- CERCO
- TORRE ALTA TENSION
- POSTE DE LUZ
- BUZON
- SEÑAL