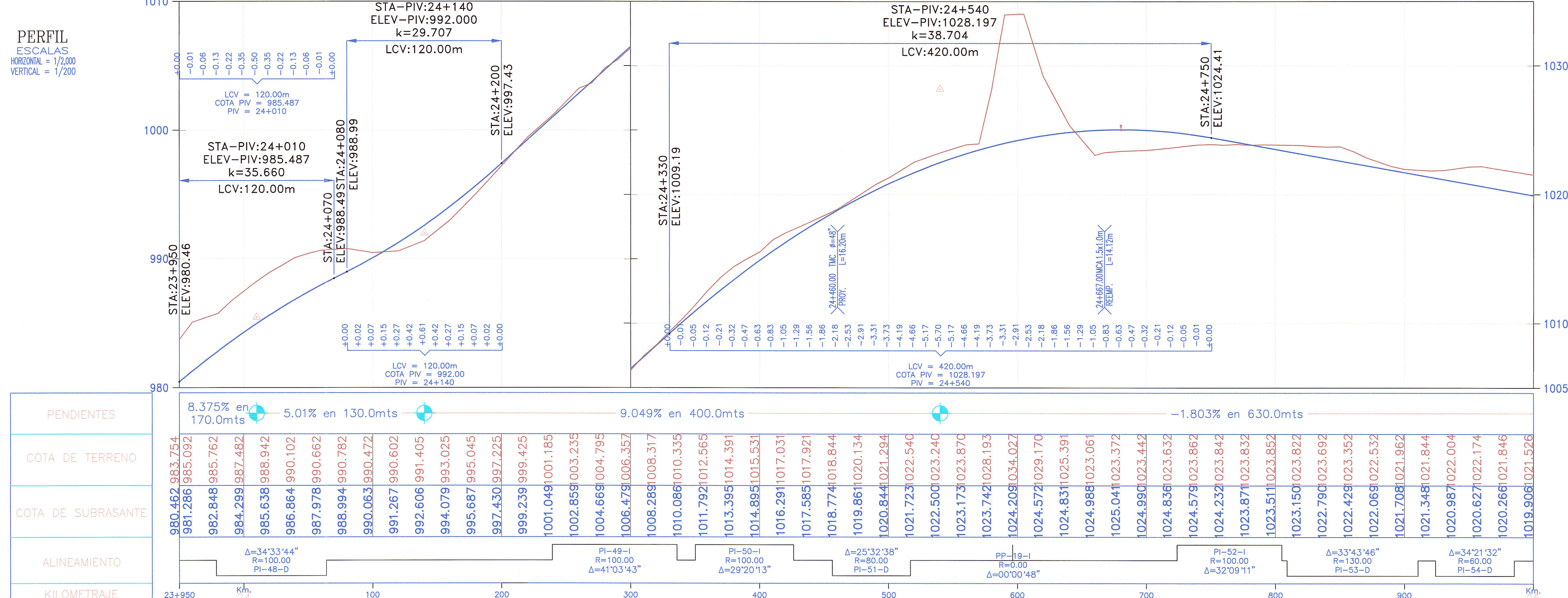


CUADRO PUNTOS DE CONTROL GPS

N°	CODIGO	COORDENADAS UTM	
		NORTE	ESTE
1	GPS-11	9'311,062.689	263,698.417

ELEMENTOS DE CURVAS

N°	SEN	ANGULO			RADIO	T	LC	EX.	SOBRE ANCHO	PERALTE (%)	Le	Ls	P	k	LTan	STan	PC/TS	SC	PI	CS	PT/ST	COORDENADAS PC/TS		COORDENADAS SC		COORDENADAS PI		COORDENADAS CS		COORDENADAS PT/ST		
		Grad	Min	Seg																		Norte	Este	Norte	Este	Norte	Este	Norte	Este	Norte	Este	
PI-48	D	34	33	44	100.00	17.847	35.322	1.580	0.90	6.500	25.000	25.000	0.260	12.493	16.680	8.346	23+978.751	24+003.751	24+022.44	24+039.074	24+064.074	9,311,627.067	264,176.085	9,311,608.018	264,159.921	9,311,592.609	264,149.233	9,311,587.968	264,131.064	9,311,579.466	264,107.672	
PI-49	I	41	03	43	100.00	23.766	46.667	2.785	0.90	6.500	25.000	25.000	0.260	12.493	16.680	8.346	24+239.320	24+264.320	24+289.36	24+310.987	24+335.987	9,311,526.739	263,940.445	9,311,518.237	263,916.954	9,311,511.683	263,892.723	9,311,489.740	263,880.533	9,311,468.983	263,866.630	
PI-50	I	29	20	13	100.00	13.177	26.203	0.864	0.90	6.500	25.000	25.000	0.260	12.493	16.680	8.346	24+350.253	24+375.253	24+388.99	24+401.455	24+426.455	9,311,456.810	263,859.192	9,311,434.969	263,847.064	9,311,423.756	263,838.993	9,311,409.951	263,839.530	9,311,385.044	263,837.580	
PI-51	D	25	32	38	80.00	5.341	10.666	0.178	1.00	7.000	25.000	25.000	0.325	12.490	16.680	8.353	24+456.420	24+481.420	24+487.12	24+492.086	24+517.086	9,311,355.099	263,836.486	9,311,330.224	263,834.277	9,311,324.422	263,835.366	9,311,319.923	263,831.543	9,311,297.226	263,821.127	
PP-19	I	00	00	48	Quiembre																											
PI-52	I	32	09	11	100.00	15.686	31.118	1.223	0.90	6.500	25.000	25.000	0.260	12.493	16.680	8.346	24+723.790	24+748.790	24+765.18	24+779.907	24+804.907	9,311,114.090	263,725.277	9,311,091.491	263,714.626	9,311,077.419	263,706.088	9,311,061.126	263,708.423	9,311,036.161	263,709.358	
PI-53	D	33	43	46	130.00	26.108	51.530	2.596	0.80	6.000	25.000	25.000	0.200	12.496	16.675	8.341	24+809.042	24+834.042	24+861.01	24+885.572	24+910.572	9,311,032.039	263,709.684	9,311,007.077	263,710.859	9,310,980.235	263,713.790	9,310,957.065	263,699.925	9,310,934.872	263,688.439	
PI-54	D	34	21	32	60.00	5.506	10.981	0.252	1.80	8.000	25.000	25.000	0.433	12.482	16.705	8.368	24+924.223	24+949.223	24+955.39	24+960.204	24+985.204	9,310,922.955	263,681.779	9,310,902.070	263,668.126	9,310,895.749	263,666.576	9,310,894.505	263,660.188	9,310,881.871	263,638.671	



PENDIENTES	COTA DE TERRENO	COTA DE SUBRASANTE	ALINEAMIENTO	KILOMETRAJE
8.375% en 170.0mts	980.462, 983.754, 981.266, 985.092, 982.848, 985.762, 984.299, 987.482, 985.638, 988.942, 986.864, 990.102, 987.978, 990.662, 988.994, 990.782, 990.063, 990.472, 991.267, 990.602, 992.606, 991.405, 994.079, 993.025, 995.687, 995.045, 997.430, 997.225, 999.239, 999.425, 1001.049, 1001.185, 1002.859, 1003.235, 1004.669, 1004.795, 1006.479, 1006.357, 1008.289, 1008.317, 1010.086, 1010.335, 1011.792, 1012.565, 1013.395, 1014.391, 1014.895, 1015.531, 1016.291, 1017.031, 1017.585, 1017.921, 1018.774, 1018.844, 1018.861, 1020.134, 1020.844, 1021.294, 1021.723, 1022.540, 1022.500, 1023.240, 1023.173, 1023.870, 1023.742, 1028.193, 1024.209, 1034.027, 1024.572, 1029.170, 1024.831, 1025.391, 1024.988, 1023.061, 1025.041, 1023.372, 1024.990, 1023.442, 1024.836, 1023.632, 1024.579, 1023.862, 1024.232, 1023.842, 1023.871, 1023.832, 1023.511, 1023.852, 1023.150, 1023.822, 1022.790, 1023.692, 1022.429, 1023.352, 1022.069, 1022.532, 1021.708, 1021.962, 1021.348, 1021.844, 1020.987, 1022.004, 1020.627, 1022.174, 1020.266, 1021.846, 1019.908, 1021.526	23+950, 100, 200, 300, 400, 500, 600, 700, 800, 900, 1000		

JNR CONSULTORES S.A.
ING. ENRIQUE LEON CABANILLAS

INGENIERO AGRICOLA - CIP N° 15068
Especialista en Hidrología e Hidráulica

LEYENDA :

- ALCANTARILLA EXISTENTE (E) O PROYECTADA (P)
- SENALES INFORMATIVAS
- POSTES KILOMETRICOS
- SENALES REGLAMENTARIAS
- SENALES PREVENTIVAS
- CUNETA PROYECTADA
- SUBDRENAJE
- EJE PROYECTADO
- BORDE PROYECTADO
- CARRIL DE ASCENSO
- EJE ACCESOS
- BORDE ACCESOS
- BORDE CARRETERA EXISTENTE
- CERCO
- TORRE ALTA TENSION
- POSTE DE LUZ
- BUZON
- SEÑAL