

ELEMENTOS DE CURVAS

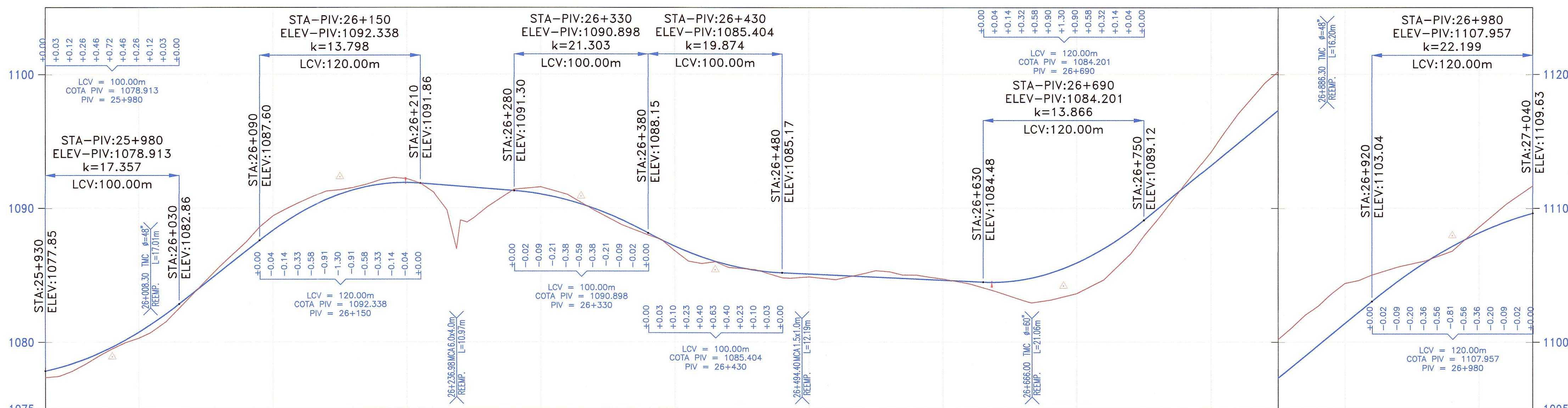
N°	SEN	ANGULO			RADIO	T	LC	EX.	SOBRE ANCHO	PERALTE (%)	L _e	L _s	P	k	LTan	STan	PC / TS	SC	PI	CS	PT / ST	COORDENADAS PC/TS		COORDENADAS SC		COORDENADAS PI		COORDENADAS CS		COORDENADAS PT/ST	
		Grad	Min	Seg																		Norte	Este	Norte	Este	Norte	Este	Norte	Este	Norte	Este
PI-59	D	15	04	17	210.00	12.635	25.239	0.380	0.500	4.000	30.000	30.000	0.179	14.997	20.005	10.005	25+942.204	25+972.204	25+985.01	25+997.444	26+027.444	9,310,265.894	262,976.512	9,310,251.800	262,950.036	9,310,244.888	262,939.220	9,310,242.410	262,926.625	9,310,234.301	262,897.749
PI-60	D	15	53	31	500.00	69.790	138.684	4.847	0.300	3.000							26+079.294		26+149.08	26+217.979	9,310,221.475	262,847.509			9,310,204.212	262,779.888			9,310,206.125	262,710.124	
PP-20	I	00	00	35	Quiembre														26+320.44						9,310,208.934	262,607.701					
PI-61	D	20	27	06	100.00	5.353	10.695	0.143	0.900	6.500	25.000	25.000	0.260	12.493	16.680	8.346	26+369.762	26+394.762	26+400.34	26+405.457	26+430.457	9,310,210.278	262,558.398	9,310,211.998	262,533.474	9,310,211.111	262,527.829	9,310,214.182	262,523.010	9,310,222.573	262,499.478
PI-62	I	21	36	52	100.00	6.371	12.724	0.203	0.900	6.500	25.000	25.000	0.260	12.493	16.680	8.346	26+531.332	26+556.332	26+562.96	26+569.057	26+594.057	9,310,260.383	262,405.957	9,310,268.774	262,382.426	9,310,272.239	262,376.631	9,310,271.245	262,369.953	9,310,272.459	262,344.999
PI-63	I	18	01	48	150.00	11.122	22.203	0.412	0.700	5.500	25.000	25.000	0.174	12.497	16.673	8.339	26+744.645	26+769.645	26+780.97	26+791.847	26+816.847	9,310,273.506	262,194.415	9,310,272.986	262,169.428	9,310,273.759	262,158.093	9,310,269.663	262,147.496	9,310,262.757	262,123.477
PI-64	D	64	33	14	35.00	7.321	14.434	0.757	1.800	8.000	25.000	25.000	0.741	12.447	16.779	8.436	26+862.799	26+887.799	26+897.82	26+902.232	26+927.232	9,310,248.839	262,079.684	9,310,244.173	262,055.267	9,310,238.231	262,046.308	9,310,247.797	262,041.401	9,310,263.611	262,022.369

BM-26.0
1,076.687
Km.25+913, Lado Der a 12.00m.
Sobre Hito de Concreto

BM-26.5
1,088.349
Km.26+371, Lado Iza a 4.70m.
Sobre Hito de Concreto

BM-27.0
1,110.063
Km.27+010, Lado Der a 9.20m.
Sobre Hito de Concreto

PERFIL
ESCALAS
HORIZONTAL = 1/2000
VERTICAL = 1/200



PENDIENTES	COTA DE TERRENO	COTA DE SUBRASANTE	ALINEAMIENTO	KILOMETRAJE
2.136% en 100.0mts	1077.85	1077.85	Δ=15°04'17"	25+930
7.897% en 170.0mts	1078.45	1078.45	R=210.00	100
-0.80% en 180.0mts	1079.63	1079.63	PI-59-D	200
-5.494% en 100.0mts	1080.75	1080.75	Δ=15°53'31"	300
-0.463% en 260.0mts	1082.10	1082.10	R=300.00	400
8.192% en 290.0mts	1083.65	1083.65	PP-20-I	500
2.786% en 280.0mts	1085.23	1085.23	Δ=20°27'06"	600
	1086.81	1086.81	R=100.00	700
	1088.35	1088.35	PI-61-D	800
	1089.64	1089.64	Δ=21°36'52"	900
	1090.64	1090.64	R=150.00	1000
	1091.35	1091.35	PI-62-I	1100
	1091.77	1091.77	Δ=18°01'48"	1200
	1091.90	1091.90	R=350.00	1300
	1091.78	1091.78	PI-63-I	1400
	1091.61	1091.61	Δ=64°33'14"	1500
	1091.45	1091.45	R=100.00	1600
	1091.29	1091.29	PI-64-D	1700
	1091.04	1091.04		1800
	1090.60	1090.60		1900
	1089.97	1089.97		2000
	1089.15	1089.15		2100
	1088.15	1088.15		2200
	1087.15	1087.15		2300
	1086.35	1086.35		2400
	1085.76	1085.76		2500
	1085.36	1085.36		2600
	1085.17	1085.17		2700
	1085.00	1085.00		2800
	1084.98	1084.98		2900
	1084.89	1084.89		3000
	1084.80	1084.80		3100
	1084.71	1084.71		3200
	1084.61	1084.61		3300
	1084.52	1084.52		3400
	1084.46	1084.46		3500
	1084.40	1084.40		3600
	1084.35	1084.35		3700
	1084.30	1084.30		3800
	1084.25	1084.25		3900
	1084.20	1084.20		4000
	1084.15	1084.15		4100
	1084.10	1084.10		4200
	1084.05	1084.05		4300
	1084.00	1084.00		4400
	1083.95	1083.95		4500
	1083.90	1083.90		4600
	1083.85	1083.85		4700
	1083.80	1083.80		4800
	1083.75	1083.75		4900
	1083.70	1083.70		5000
	1083.65	1083.65		5100
	1083.60	1083.60		5200
	1083.55	1083.55		5300
	1083.50	1083.50		5400
	1083.45	1083.45		5500
	1083.40	1083.40		5600
	1083.35	1083.35		5700
	1083.30	1083.30		5800
	1083.25	1083.25		5900
	1083.20	1083.20		6000
	1083.15	1083.15		6100
	1083.10	1083.10		6200
	1083.05	1083.05		6300
	1083.00	1083.00		6400
	1082.95	1082.95		6500
	1082.90	1082.90		6600
	1082.85	1082.85		6700
	1082.80	1082.80		6800
	1082.75	1082.75		6900
	1082.70	1082.70		7000
	1082.65	1082.65		7100
	1082.60	1082.60		7200
	1082.55	1082.55		7300
	1082.50	1082.50		7400
	1082.45	1082.45		7500
	1082.40	1082.40		7600
	1082.35	1082.35		7700
	1082.30	1082.30		7800
	1082.25	1082.25		7900
	1082.20	1082.20		8000
	1082.15	1082.15		8100
	1082.10	1082.10		8200
	1082.05	1082.05		8300
	1082.00	1082.00		8400
	1081.95	1081.95		8500
	1081.90	1081.90		8600
	1081.85	1081.85		8700
	1081.80	1081.80		8800
	1081.75	1081.75		8900
	1081.70	1081.70		9000
	1081.65	1081.65		9100
	1081.60	1081.60		9200
	1081.55	1081.55		9300
	1081.50	1081.50		9400
	1081.45	1081.45		9500
	1081.40	1081.40		9600
	1081.35	1081.35		9700
	1081.30	1081.30		9800
	1081.25	1081.25		9900
	1081.20	1081.20		10000

JNR CONSULTORES S.A.
Ing. ENRIQUE COX CASSINELLI
CIP 22854

INGENIERO AGRICOLA - CIP N° 15696
Especialista en Hidrología e Hidráulica

LEYENDA :

- PROG. TIPO DIMEN LONGITUD
- ALCANTARILLA EXISTENTE (E) O PROYECTADA (P)
- SEÑALES INFORMATIVAS
- POSTES KILOMETRICOS
- SEÑALES REGLAMENTARIAS
- SEÑALES PREVENTIVAS
- CUNETA PROYECTADA
- SUBDRENAJE
- EJE PROYECTADO
- BORDE PROYECTADO
- CARRIL DE ASCENSO
- EJE ACCESOS
- BORDE ACCESOS
- BORDE CARRETERA EXISTENTE
- CERCO
- TORRE ALTA TENSION
- POSTE DE LUZ
- BUZON
- SEÑAL