

CUADRO DE DATOS TÉCNICOS CANTERA CARRICILLO

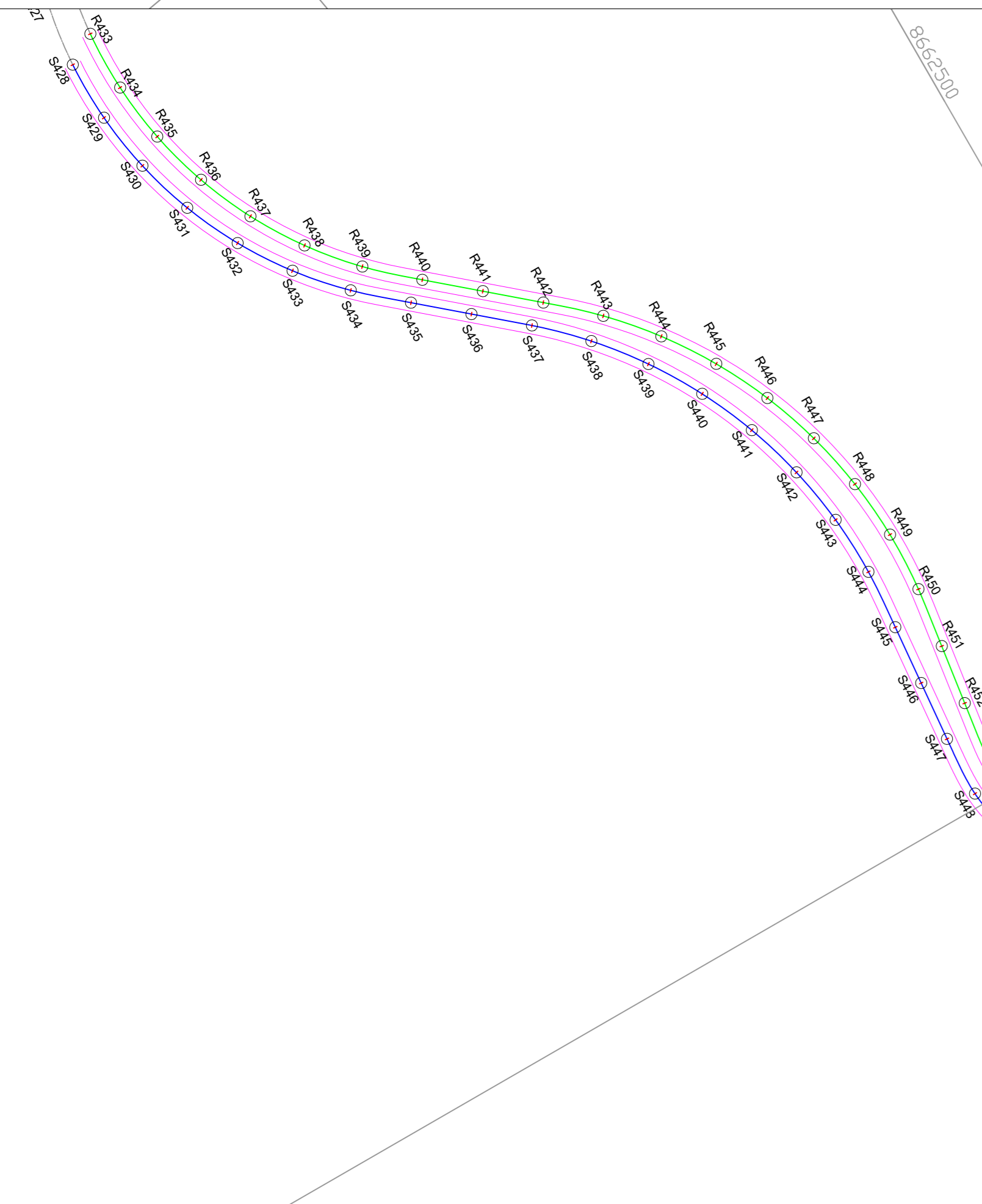
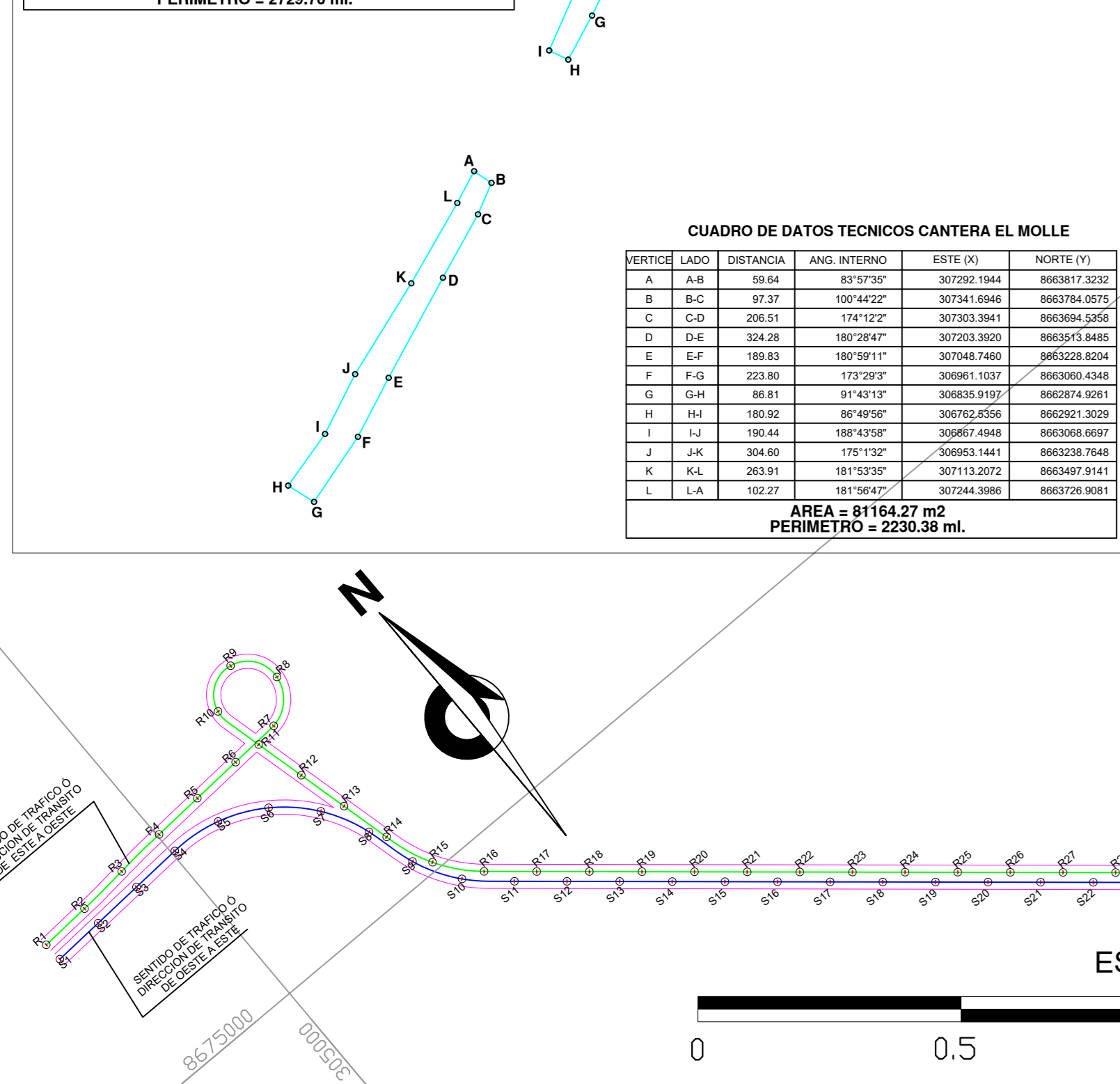
VERTICE	LADO	ESTERIO	NORTE/ESTERIO	ESTERIO	NORTE/ESTERIO
A	AB	58.02	87227	38472.2386	86421.8592
B	BC	126.27	126.27	38472.2386	86421.8592
C	CD	114.26	114.26	38472.2386	86421.8592
D	DE	104.46	104.46	38472.2386	86421.8592
E	EF	104.46	104.46	38472.2386	86421.8592
F	FG	114.26	114.26	38472.2386	86421.8592
G	GH	126.27	126.27	38472.2386	86421.8592
H	HI	126.27	126.27	38472.2386	86421.8592
I	IJ	114.26	114.26	38472.2386	86421.8592
J	JK	104.46	104.46	38472.2386	86421.8592
K	KL	104.46	104.46	38472.2386	86421.8592
L	LM	114.26	114.26	38472.2386	86421.8592
M	MN	126.27	126.27	38472.2386	86421.8592
N	NO	126.27	126.27	38472.2386	86421.8592
O	OP	114.26	114.26	38472.2386	86421.8592
P	PA	104.46	104.46	38472.2386	86421.8592

ÁREA = 9950.42 m²
PERÍMETRO = 2729.70 ml.

CUADRO DE DATOS TÉCNICOS CANTERA EL MOLLE

VERTICE	LADO	ESTERIO	NORTE/ESTERIO	ESTERIO	NORTE/ESTERIO
A	AB	66.66	87327	38790.1884	86647.3232
B	BC	126.27	126.27	38790.1884	86647.3232
C	CD	114.26	114.26	38790.1884	86647.3232
D	DE	104.46	104.46	38790.1884	86647.3232
E	EF	104.46	104.46	38790.1884	86647.3232
F	FG	114.26	114.26	38790.1884	86647.3232
G	GH	126.27	126.27	38790.1884	86647.3232
H	HI	126.27	126.27	38790.1884	86647.3232
I	IJ	114.26	114.26	38790.1884	86647.3232
J	JK	104.46	104.46	38790.1884	86647.3232
K	KL	104.46	104.46	38790.1884	86647.3232
L	LM	114.26	114.26	38790.1884	86647.3232
M	MN	126.27	126.27	38790.1884	86647.3232
N	NO	126.27	126.27	38790.1884	86647.3232
O	OP	114.26	114.26	38790.1884	86647.3232
P	PA	104.46	104.46	38790.1884	86647.3232

ÁREA = 8164.77 m²
PERÍMETRO = 2526.38 ml.



Leyenda

- Vértice
- Eje izquierdo
- Eje derecho
- Servidumbre

JNR CONSULTORES S.A.
Calle Roca de Vergallo 153 - Magallanes del Mar
Teléfono: 62-4440

ESTUDIO DE PREINVERSION A NIVEL DE PERFIL REFORZADO DEL PROYECTO "CARRETERA HUAYCÁN - CIENEGUILLA - SANTIAGO DE TUNA - SAN ANDRÉS DE TUPICDOCHA DE TUPICDOCHA SAN DAMIAN YURACMAYO - YAULI PACHACHACA - EMP. PE-22"

Plano georreferenciado del ámbito de intervención

Departamento : Lima	Provincia : Lima y Huarochiri	Distrito : Chaclacayo
Sistema de proyección cartográfica : UTM	Datum : WGS84	Lahuaytambo
Cuadrícula : L	Plano : P 1/3	San Jose de los Ch.
	Zona UTM : 18 sur	San Damian,Antioquia
	Fecha : Diciembre,2018	Cieneguilla y Chosica

SENTIDO DE TRAFICO D DIRECCION DE TRAFICO DE ESTE A OESTE						SENTIDO DE TRAFICO D DIRECCION DE TRAFICO DE ESTE A OESTE						SENTIDO DE TRAFICO D DIRECCION DE TRAFICO DE ESTE A OESTE						SENTIDO DE TRAFICO D DIRECCION DE TRAFICO DE ESTE A OESTE						SENTIDO DE TRAFICO D DIRECCION DE TRAFICO DE ESTE A OESTE						SENTIDO DE TRAFICO D DIRECCION DE TRAFICO DE ESTE A OESTE					
VERTICE	LADO	ESTERIO	NORTE/ESTERIO	ESTERIO	NORTE/ESTERIO	VERTICE	LADO	ESTERIO	NORTE/ESTERIO	ESTERIO	NORTE/ESTERIO	VERTICE	LADO	ESTERIO	NORTE/ESTERIO	ESTERIO	NORTE/ESTERIO	VERTICE	LADO	ESTERIO	NORTE/ESTERIO	ESTERIO	NORTE/ESTERIO	VERTICE	LADO	ESTERIO	NORTE/ESTERIO	ESTERIO	NORTE/ESTERIO	VERTICE	LADO	ESTERIO	NORTE/ESTERIO	ESTERIO	NORTE/ESTERIO
R1	R2	100	30470.1531	86753.8964	R55	R56	100	30845.1829	867247.7237	R43	R44	100	30460.6805	866192.2280	R474	R475	100	34434.6053	866273.0701	R515	R516	100	34449.9337	866383.7358	R556	R557	100	34574.0284	866578.4550						
R2	R3	100	30480.5788	86753.8964	R56	R57	100	30861.6710	867247.7237	R44	R45	100	30470.7800	866192.2280	R475	R476	100	34437.8100	866273.0701	R516	R517	100	34453.1238	866383.7358	R557	R558	100	34583.2389	866578.4550						
R3	R4	100	30490.9931	86753.8964	R57	R58	100	30882.7532	867247.7237	R45	R46	100	30481.8800	866192.2280	R476	R477	100	34446.6053	866273.0701	R517	R518	100	34461.4376	866383.7358	R558	R559	100	34613.3538	866578.4550						
R4	R5	100	30501.4074	86753.8964	R58	R59	100	30903.8354	867247.7237	R46	R47	100	30492.9700	866192.2280	R477	R478	100	34455.4006	866273.0701	R518	R519	100	34470.2329	866383.7358	R559	R560	100	34665.1690	866578.4550						
R5	R6	100	30511.8217	86753.8964	R59	R60	100	30924.9176	867247.7237	R47	R48	100	30504.0550	866192.2280	R478	R479	100	34464.3459	866273.0701	R519	R520	100	34489.1782	866383.7358	R560	R561	100	34784.9434	866578.4550						
R6	R7	100	30522.2360	86753.8964	R60	R61	100	30946.0000	867247.7237	R48	R49	100	30515.1925	866192.2280	R479	R480	100	34473.2912	866273.0701	R520	R521	100	34514.0705	866383.7358	R561	R562	100	34980.7118	866578.4550						
R7	R8	100	30532.6503	86753.8964	R61	R62	100	30967.0825	867247.7237	R49	R50	100	30526.3350	866192.2280	R480	R481	100	34482.2365	866273.0701	R521	R522	100	34539.1498	866383.7358	R562	R563	100	35067.3362	866578.4550						
R8	R9	100	30543.0646	86753.8964	R62	R63	100	30988.1650	867247.7237	R50	R51	100	30537.4775	866192.2280	R481	R482	100	34491.1818	866273.0701	R522	R523	100	34564.2291	866383.7358	R563	R564	100	35195.5236	866578.4550						
R9	R10	100	30553.4789	86753.8964	R63	R64	100	31009.2475	867247.7237	R51	R52	100	30548.6200	866192.2280	R482	R483	100	34500.1271	866273.0701	R523	R524	100	34589.3184	866383.7358	R564	R565	100	35325.7189	866578.4550						
R10	R11	100	30563.8932	86753.8964	R64	R65	100	31030.3300	867247.7237	R52	R53	100	30559.7625	866192.2280	R483	R484	100	34509.0724	866273.0701	R524	R525	100	34618.4077	866383.7358	R565	R566	100	35456.9144	866578.4550						
R11	R12	100	30574.3075	86753.8964	R65	R66	100	31051.4125	867247.7237	R53	R54	100	30570.9050	866192.2280	R484	R485	100	34518.0177	866273.0701	R525	R526	100	34647.8970	866383.7358	R566	R567	100	35588.0101	866578.4550						
R12	R13	100	30584.7218	86753.8964	R66	R67	100	31072.4950	867247.7237	R54	R55	100	30582.0475	866192.2280	R485	R486	100	34527.0630	866273.0701	R526	R527	100	34677.3863	866383.7358	R567	R568	100	35720.1054	866578.4550						
R13	R14	100	30595.1361	86753.8964	R67	R68	100	31093.5775	867247.7237	R55	R56	100	30593.1900	866192.2280	R486	R487	100	34536.0183	866273.0701	R527	R528	100	34706.9156	866383.7358	R568	R569	100	35852.1957	866578.4550						
R14	R15	100	30605.5504	86753.8964	R68	R69	100	31114.6600	867247.7237	R56	R57	100	30604.3125	866192.2280	R487	R488	100	34545.0736	866273.0701	R528	R529	100	34736.8429	866383.7358	R569	R570	100	35984.2860	866578.4550						
R15	R16	100	30615.9647	86753.8964	R69	R70	100	31135.7425	867247.7237	R57	R58	100	30615.4650	866192.2280	R488	R489	100	34554.1289	866273.0701	R529	R530	100	34766.7702	866383.7358	R570	R571	100	36116.3753	866578.4550						
R16	R17	100	30626.3790	86753.8964	R70	R71	100	31156.8250	867247.7237	R58	R59	100	30626.6175	866192.2280	R489	R490	100	34563.1842	866273.0701	R530	R531	100	34796.6975	866383.7358	R571	R572	100	36248.4646	866578.4550						
R17	R18	100	30636.7933	86753.8964	R71	R72	100	31177.9075	867247.7237	R59	R60	100	30637.7600	866192.2280	R490	R491	100	34572.2395	866273.0701	R531	R532	100	34826.6248	866383.7358	R572	R573	100	36380.5549	866578.4550						
R18	R19	100	30647.2076	86753.8964	R72	R73	100	31198.9900	867247.7237	R60	R61	100	30648.9125	866192.2280	R491	R492	100	34581.2948	866273.0701	R532	R533	100	34856.5501	866383.7358	R573	R574	100	36512.6452	866578.4550						
R19	R20	100	30657.6219	86753.8964	R73	R74	100	31220.0725	867247.7237	R61	R62	100	30660.0250	866192.2280	R492	R493	100	34590.3501	866273.0701	R533	R534	100	34886.4754	866383.7358	R574	R575	100	36644.7355	866578.4550						
R20	R21	100	30668.0362	86753.8964	R74	R75	100	31241.1550	867247.7237	R62	R63	100	30671.1375	866192.2280	R493	R494	100	34599.4054	866273.0701	R534	R535	100	34916.4007	866383.7358	R575	R576	100	36776.8258	866578.4550						
R21	R22	100	30678.4505	86753.8964	R75	R76	100	31262.2375	867247.7237	R63	R64	100	30682.2500	866192.2280	R494	R495	100	34608.4607	866273.0701	R535	R536	100	34946.3260	866383.7358	R576	R577	100	36908.9161	866578.4550						
R22	R23	100	30688.8648	86753.8964	R76	R77	100	31283.3200	867247.7237	R64	R65	100	30693.3625	866192.2280	R495	R496	100	34617.5160	866273.0701	R536	R537	100	34976.2513	866383.7358	R577	R578	100	37041.0064	866578.4550						
R23	R24	100	30699.2791	86753.8964	R77	R78	100	31304.4025	867247.7237	R65	R66	100	30704.4750	866192.2280	R496	R497	100	34626.5713	866273.0701	R537	R538	100	35006.1766	866383.7358	R578	R579	100	37173.0967	866578.4550						
R24	R25	100	30709.6934	86753.8964	R78	R79	100	31325.4850	867247.7237	R66	R67	100	30715.5975	866192.2280	R497	R498	100	34635.6266	866273.0701	R538	R539	100	35036.3019	866383.7358	R579	R580	100	37305.1870	866578.4550						
R25	R26	100	30720.1077	86753.8964	R79	R80	100	31346.5675	867247.7237	R67	R68	100	30726.7200	866192.2280	R498	R499	100	34644.6819	866273.0701	R539	R540	100	35066.4272	866383.7358	R580	R581	100	37437.2773	866578.4550						
R26	R27	100	30730.5220	86753.8964	R80	R81	100	31367.6500	867247.7237	R68	R69	100	30737.8425	866192.2280	R499	R500	100	34653.7372	866273.0701	R540	R541	100	35096.5525	866383.7358	R581	R582	100	37569.3676	866578.4550						
R27	R28	100	30740.9363	86753.8964	R81	R82	100	31388.7325	867247.7237	R69	R70	100	30748.9650	866192.2280	R500	R501</																			