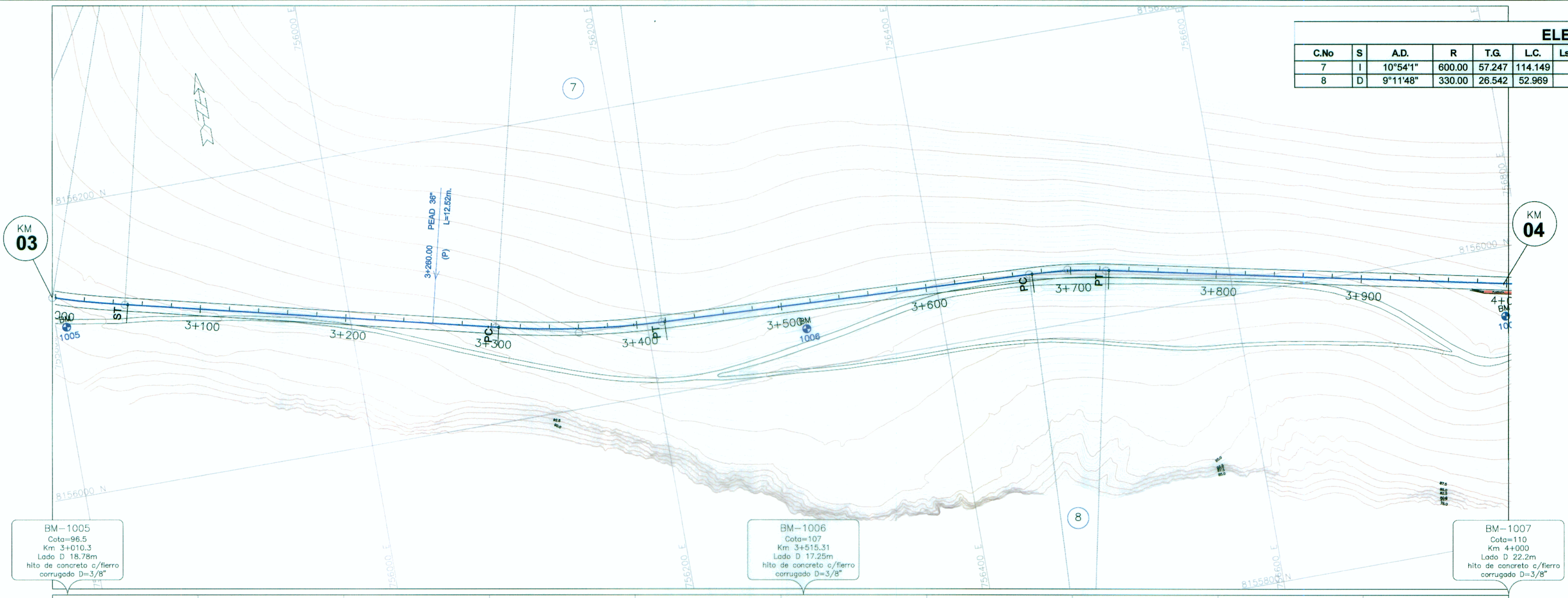
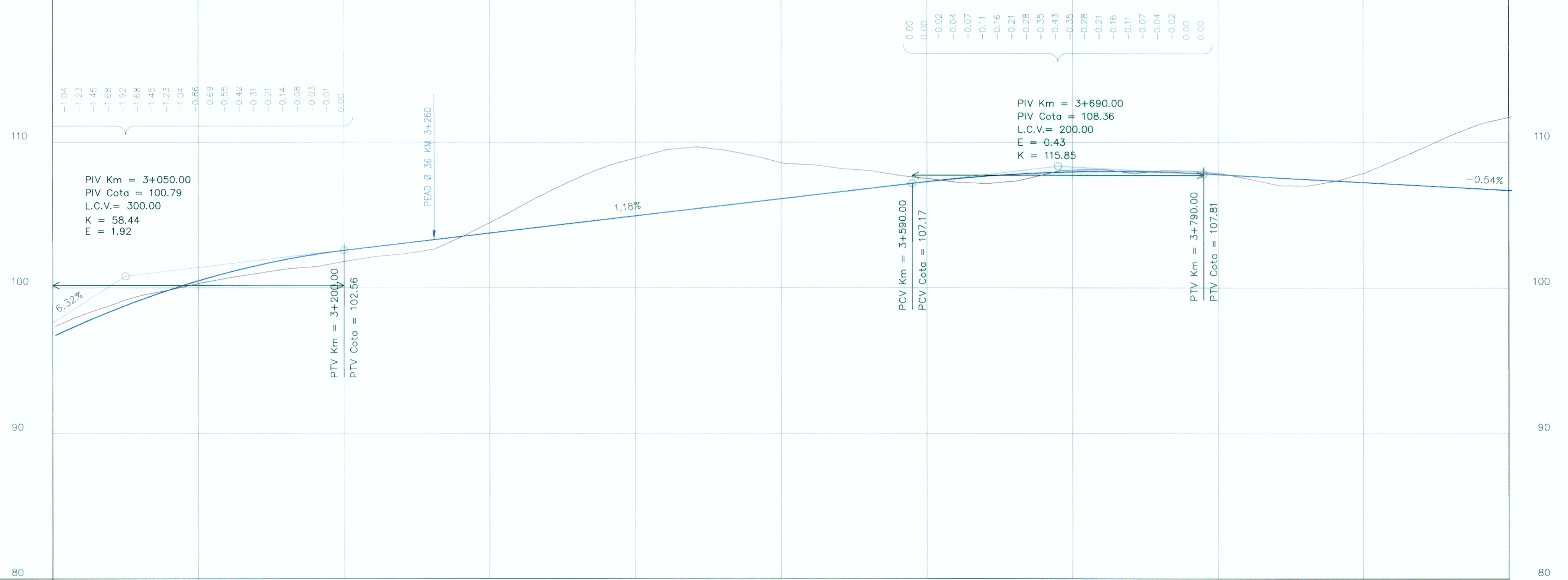


ELEMENTOS DE CURVAS HORIZONTALES																
C.No	S	A.D.	R	T.G.	L.C.	Lsp e	TS	SC ò PC	PI	CS ò PT	ST	Lsp s	S.A.	P %	NORTE	ESTE
7	I	10°54'1"	600.00	57.247	114.149			3+305.140	3+362.387	3+419.289			0.3	3.5	8156051.860	756155.070
8	D	9°11'48"	330.00	26.542	52.969			3+673.357	3+699.899	3+726.326			0.5	5.5	8156036.368	756492.572

ESCALA
H : 1/2000



ESCALA
H : 1/2000
V : 1/200



PENDIENTE	1.18% en 640.0 m		-0.54% en 640.0 m																																																																																																																																																																																																											
COTA DE SUBRASANTE	97.39	96.28	97.82	97.23	98.21	97.66	98.55	98.08	98.88	98.48	99.23	98.86	99.50	99.23	99.69	99.59	99.88	99.91	100.10	100.23	100.32	100.52	100.51	100.81	100.69	101.07	100.84	101.32	100.99	101.55	101.14	101.76	101.29	101.95	101.36	102.13	101.44	102.29	101.62	102.44	101.81	102.56	101.97	102.68	102.12	102.80	102.21	102.92	102.31	103.04	102.46	103.15	102.62	103.27	103.07	103.59	103.52	103.51	104.03	103.63	104.54	103.75	104.54	103.75	105.05	103.86	105.05	103.86	105.61	103.98	105.61	103.98	106.15	104.10	106.65	104.22	107.13	104.34	107.60	104.45	108.03	104.57	108.39	104.69	108.69	104.81	108.95	104.93	109.22	105.05	109.46	105.16	109.58	105.26	109.67	105.40	109.55	105.52	109.43	105.64	109.24	105.76	108.04	105.87	108.78	105.99	108.52	106.11	108.48	106.23	108.43	106.35	108.30	106.46	108.17	106.58	108.10	106.70	108.03	106.82	107.86	106.94	107.69	107.06	107.58	107.17	107.48	107.29	107.34	107.39	107.21	107.49	107.18	107.58	107.14	107.66	107.23	107.73	107.32	107.79	107.56	107.84	107.80	107.89	108.05	107.93	108.11	107.97	108.11	107.98	108.08	107.98	107.86	107.96	107.85	107.96	108.05	107.94	108.03	107.90	108.02	107.86	107.83	107.81	107.84	107.76	107.64	107.70	107.45	107.65	107.23	107.60	107.02	107.54	107.00	107.49	106.99	107.43	107.16	107.38	107.34	107.32	107.63	107.27	107.52	107.21	108.35	107.16	108.78	107.11	109.22	107.05	109.65	107.00	110.11	106.94	110.56	106.89	110.94	106.83	111.32	106.78	111.54	106.73	111.77	106.67
COTA DE TERRENO	97.39	96.28	97.82	97.23	98.21	97.66	98.55	98.08	98.88	98.48	99.23	98.86	99.50	99.23	99.69	99.59	99.88	99.91	100.10	100.23	100.32	100.52	100.51	100.81	100.69	101.07	100.84	101.32	100.99	101.55	101.14	101.76	101.29	101.95	101.36	102.13	101.44	102.29	101.62	102.44	101.81	102.56	101.97	102.68	102.12	102.80	102.21	102.92	102.31	103.04	102.46	103.15	102.62	103.27	103.07	103.59	103.52	103.51	104.03	103.63	104.54	103.75	104.54	103.75	105.05	103.86	105.05	103.86	105.61	103.98	105.61	103.98	106.15	104.10	106.65	104.22	107.13	104.34	107.60	104.45	108.03	104.57	108.39	104.69	108.69	104.81	108.95	104.93	109.22	105.05	109.46	105.16	109.58	105.26	109.67	105.40	109.55	105.52	109.43	105.64	109.24	105.76	108.04	105.87	108.78	105.99	108.52	106.11	108.48	106.23	108.43	106.35	108.30	106.46	108.17	106.58	108.10	106.70	108.03	106.82	107.86	106.94	107.69	107.06	107.58	107.17	107.48	107.29	107.34	107.39	107.21	107.49	107.18	107.58	107.14	107.66	107.23	107.73	107.32	107.79	107.56	107.84	107.80	107.89	108.05	107.93	108.11	107.97	108.11	107.98	108.08	107.98	107.86	107.96	107.85	107.96	108.05	107.94	108.03	107.90	108.02	107.86	107.83	107.81	107.84	107.76	107.64	107.70	107.45	107.65	107.23	107.60	107.02	107.54	107.00	107.49	106.99	107.43	107.16	107.38	107.34	107.32	107.63	107.27	107.52	107.21	108.35	107.16	108.78	107.11	109.22	107.05	109.65	107.00	110.11	106.94	110.56	106.89	110.94	106.83	111.32	106.78	111.54	106.73	111.77	106.67
ALINEAMIENTO	CN-71																										CN-8D																																																																																																																																																																																			
DIAGRAMA DE PERALTES	CN-7-1 P=3.5% L=9.6m																										CN-8-D P=3.5% L=15.1m																																																																																																																																																																																			
DRENAJE OBRAS DE ARTE	3+260.00 PEAD 36" (P) L=12.8m																										3+790.00 PEAD 36" (P) L=12.8m																																																																																																																																																																																			
KILOMETRAJE	3+000	3+100	3+200	3+300	3+400	3+500	3+600	3+700	3+800	3+900	4+000	3+000	3+100	3+200	3+300	3+400	3+500	3+600	3+700	3+800	3+900	4+000																																																																																																																																																																																								

LEYENDA

- EJE
- BORDE DE VIA (EXISTENTE)
- BORDE DE CASA
- CERCO
- BORDILLO
- CURVA NIVEL MADRE
- CURVA NIVEL SIMPLE
- POSTE ENERGIA, MADERA
- BM
- ALCANTARILLA
- PUENTE
- CANAL
- ACCESO
- LIMT. PROPIEDAD

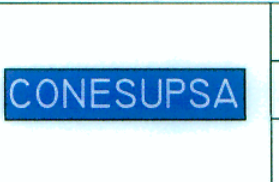
PERFIL:

- PERFIL DE TERRENO EJE PROYECTADO
- PERFIL RASANTE EJE PROYECTADO
- CC = 120m
- CR = 120m
- ZD = 120m
- CUNETA DE TIERRA
- CUNETA REVESTIDA
- ZANJA DE DRENAJE

[Signature]
Ing. FELIX RAUL CHIRITO SIPANI
Especialista en Topografía, Trazo y Diseño Via
CIP. N° 53717

[Signature]
Ing. Jorge Pizarro Costañeda
Jefe de Estudio
CIP 6922

NOTA :
ESCALA MOSTRADA PARA EL FORMATO A1
PARA EL FORMATO A3 CONSIDERAR EL DOBLE



Diseñó: ING. RAUL CHIRITO
Verificó: ING. J. PERARANDA C.
Dibujó: E. SANCHEZ Q.

Aprobó:

N°	FECHA	DESCRIPCION

ESTUDIO DEFINITIVO DE LA CARRETERA: CAMANA - DESVIO QUILCA - MATARANI - ILO - TACNA, TRAMO: DESVIO QUILCA - MATARANI
CONTRATO N°233-2008-MTC/20

PLANTA Y PERFIL
KM 3+000 - KM 4+000

ESCALA : INDICADA
FECHA: SETIEMBRE-2011
DV-PP-004-R-01A