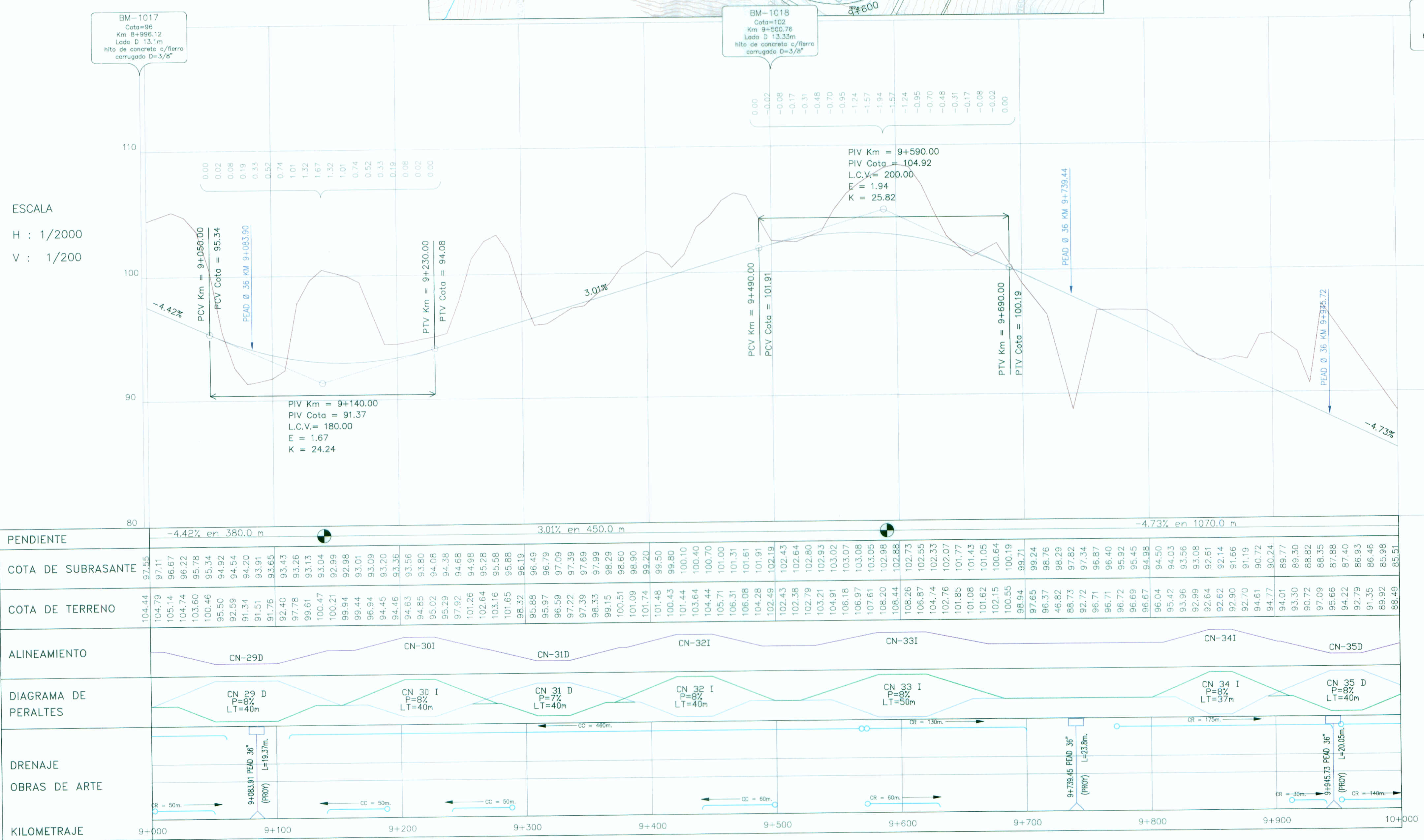


ESCALA
H : 1/2000

ELEMENTOS DE CURVAS HORIZONTALES														NORTE	ESTE	
C.No	S	A.D.	R	T.G.	L.C.	Lsp e	TS	SC ó PC	PI	CS ó PT	ST	Lsp s	S.A.	P %	NORTE	ESTE
29	D	162°32'27"	32.00	32.519	50.780	40.000	9+010.977	9+050.977	9+252.499	9+101.757	9+141.757	40.000	2.6	8.0	8155632.040	760015.820
30	I	40°32'40"	90.000	11.912	23.687	40.000	9+163.334	9+203.334	9+216.816	9+227.021	9+267.021	40.000	1.1	8.0	8155315.460	760016.680
31	D	29°21'24"	130.00	13.351	26.608	40.000	9+268.768	9+308.768	9+322.938	9+335.376	9+375.376	40.000	0.8	7.0	8155232.520	760088.020
32	I	55°38'55"	70.000	14.183	27.988	40.000	9+380.952	9+420.952	9+438.343	9+448.939	9+488.939	40.000	1.4	8.0	8155117.670	760111.060
33	I	83°47'31"	60.000	19.522	37.747	50.000	9+532.022	9+582.022	9+612.253	9+619.768	9+669.768	50.000	1.5	8.0	8155047.040	760277.390
34	I	52°18'42"	60.000	8.956	17.781	37.000	9+810.062	9+847.062	9+858.435	9+864.842	9+901.842	37.000	1.5	8.0	8155281.730	760408.640
35	D	124°49'7"	30.000	13.490	25.355	40.000	9+903.987	9+943.987	9+985.287	9+969.342	10+009.342	40.000	2.7	8.0	8155402.983	760396.932



PENDIENTE	-4.42% en 380.0 m	3.01% en 450.0 m	-4.73% en 1070.0 m
COTA DE SUBRASANTE	97.55, 97.11, 96.67, 96.22, 95.78, 95.34, 94.92, 94.54, 94.20, 93.91, 93.55, 93.20, 92.84, 92.47, 92.11, 91.74, 91.37, 91.00, 90.63, 90.26, 89.89, 89.52, 89.15, 88.78, 88.41, 88.04, 87.67, 87.30, 86.93, 86.56, 86.19, 85.82, 85.45, 85.08, 84.71, 84.34, 83.97, 83.60, 83.23, 82.86, 82.49, 82.12, 81.75, 81.38, 81.01, 80.64, 80.27, 79.90, 79.53, 79.16, 78.79, 78.42, 78.05, 77.68, 77.31, 76.94, 76.57, 76.20, 75.83, 75.46, 75.09, 74.72, 74.35, 73.98, 73.61, 73.24, 72.87, 72.50, 72.13, 71.76, 71.39, 71.02, 70.65, 70.28, 69.91, 69.54, 69.17, 68.80, 68.43, 68.06, 67.69, 67.32, 66.95, 66.58, 66.21, 65.84, 65.47, 65.10, 64.73, 64.36, 63.99, 63.62, 63.25, 62.88, 62.51, 62.14, 61.77, 61.40, 61.03, 60.66, 60.29, 59.92, 59.55, 59.18, 58.81, 58.44, 58.07, 57.70, 57.33, 56.96, 56.59, 56.22, 55.85, 55.48, 55.11, 54.74, 54.37, 54.00, 53.63, 53.26, 52.89, 52.52, 52.15, 51.78, 51.41, 51.04, 50.67, 50.30, 49.93, 49.56, 49.19, 48.82, 48.45, 48.08, 47.71, 47.34, 46.97, 46.60, 46.23, 45.86, 45.49, 45.12, 44.75, 44.38, 44.01, 43.64, 43.27, 42.90, 42.53, 42.16, 41.79, 41.42, 41.05, 40.68, 40.31, 39.94, 39.57, 39.20, 38.83, 38.46, 38.09, 37.72, 37.35, 36.98, 36.61, 36.24, 35.87, 35.50, 35.13, 34.76, 34.39, 34.02, 33.65, 33.28, 32.91, 32.54, 32.17, 31.80, 31.43, 31.06, 30.69, 30.32, 29.95, 29.58, 29.21, 28.84, 28.47, 28.10, 27.73, 27.36, 26.99, 26.62, 26.25, 25.88, 25.51, 25.14, 24.77, 24.40, 24.03, 23.66, 23.29, 22.92, 22.55, 22.18, 21.81, 21.44, 21.07, 20.70, 20.33, 19.96, 19.59, 19.22, 18.85, 18.48, 18.11, 17.74, 17.37, 17.00, 16.63, 16.26, 15.89, 15.52, 15.15, 14.78, 14.41, 14.04, 13.67, 13.30, 12.93, 12.56, 12.19, 11.82, 11.45, 11.08, 10.71, 10.34, 9.97, 9.60, 9.23, 8.86, 8.49, 8.12, 7.75, 7.38, 7.01, 6.64, 6.27, 5.90, 5.53, 5.16, 4.79, 4.42, 4.05, 3.68, 3.31, 2.94, 2.57, 2.20, 1.83, 1.46, 1.09, 0.72, 0.35, 0.00		
COTA DE TERRENO	104.44, 104.79, 105.14, 103.60, 100.46, 95.50, 92.69, 91.34, 91.51, 91.76, 92.40, 93.43, 97.78, 93.13, 100.47, 100.21, 99.94, 99.44, 96.94, 94.45, 94.46, 94.85, 95.02, 95.29, 97.92, 102.64, 103.16, 101.65, 96.32, 95.88, 95.97, 96.79, 97.22, 97.39, 98.33, 99.15, 100.81, 101.09, 101.74, 101.48, 100.43, 101.44, 103.64, 104.44, 105.71, 106.31, 104.28, 102.49, 102.43, 102.36, 102.79, 103.21, 104.91, 106.16, 107.61, 108.20, 108.44, 108.26, 106.87, 104.74, 102.76, 101.85, 101.08, 101.62, 102.15, 100.64, 98.94, 98.24, 96.37, 96.76, 46.62, 88.73, 92.72, 96.71, 96.72, 96.69, 96.67, 96.04, 95.42, 93.96, 92.99, 92.64, 92.82, 92.90, 92.70, 94.61, 94.77, 94.01, 93.30, 90.72, 88.62, 86.35, 85.66, 84.22, 86.93, 91.35, 89.92, 88.49, 85.51		
ALINEAMIENTO	CN-29D, CN-30I, CN-31D, CN-32I, CN-33I, CN-34I, CN-35D		
DIAGRAMA DE PERALTES	CN 29 D P=8% LT=40m, CN 30 I P=8% LT=40m, CN 31 D P=7% LT=40m, CN 32 I P=8% LT=40m, CN 33 I P=8% LT=37m, CN 34 I P=8% LT=40m, CN 35 D P=8% LT=40m		
DRENAJE OBRAS DE ARTE	9+083.91 PEAD 36 L=19.37m, 9+239.45 PEAD 36 L=23.8m, 9+445.33 PEAD 36 L=20.05m		
KILOMETRAJE	9+000, 9+100, 9+200, 9+300, 9+400, 9+500, 9+600, 9+700, 9+800, 9+900, 10+000		

LEYENDA

- EJE
- BORDE DE VÍA (EXISTENTE)
- BORDE DE CASA
- CERCO
- BORDILLO
- CURVA NIVEL MADRE
- CURVA NIVEL SIMPLE
- POSTE ENERGIA, MADERA
- BM
- ALCANTARILLA
- PUENTE
- CANAL
- ACCESO
- LIMIT. PROPIEDAD

PERFIL:

- PERFIL DE TERRENO EJE PROYECTADO
- PERFIL RASANTE EJE PROYECTADO
- CC = 120m
- OR = 120m
- CC = 120m
- OR = 120m
- ZANJA DE DRENAJE

NOTA:
ESCALA MOSTRADA PARA EL FORMATO A1
PARA EL FORMATO A3 CONSIDERAR EL DOBLE



Diseño: ING. RAUL CHIRITO
Verifico: ING. J. PEÑARANDA C.
Dibujó: E. SANCHEZ Q.

N°	FECHA	DESCRIPCION

ESTUDIO DEFINITIVO DE LA CARRETERA: CAMANA - DESVIO QUILCA - MATARANI - ILO - TACNA, TRAMO: DESVIO QUILCA - MATARANI
CONTRATO N°233-2008-MTC/20

PLANTA Y PERFIL
KM 9+000 - KM 10+000
ESCALA : INDICADA
FECHA: SETIEMBRE-2011
DV-PP-010-R-01A