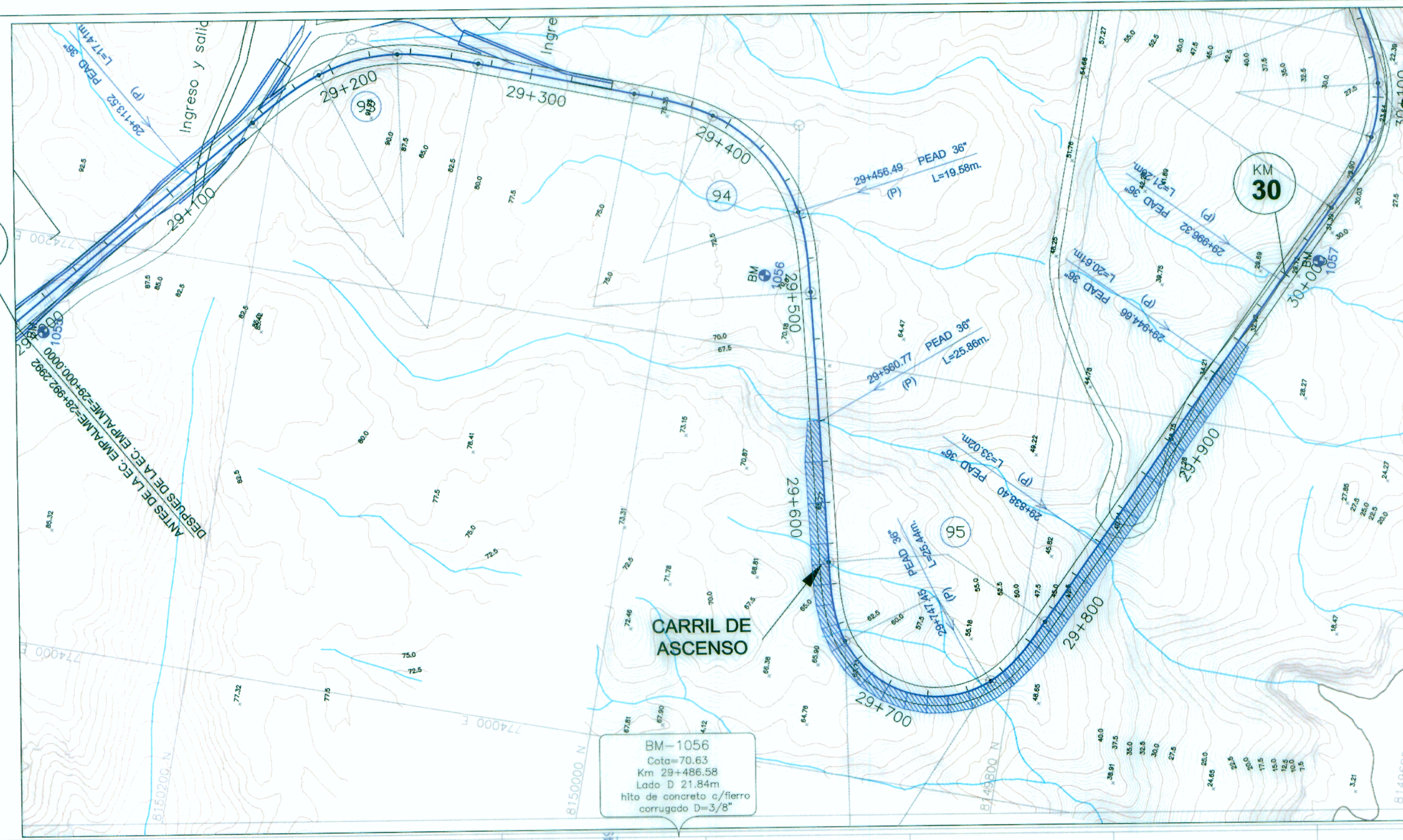


83.52

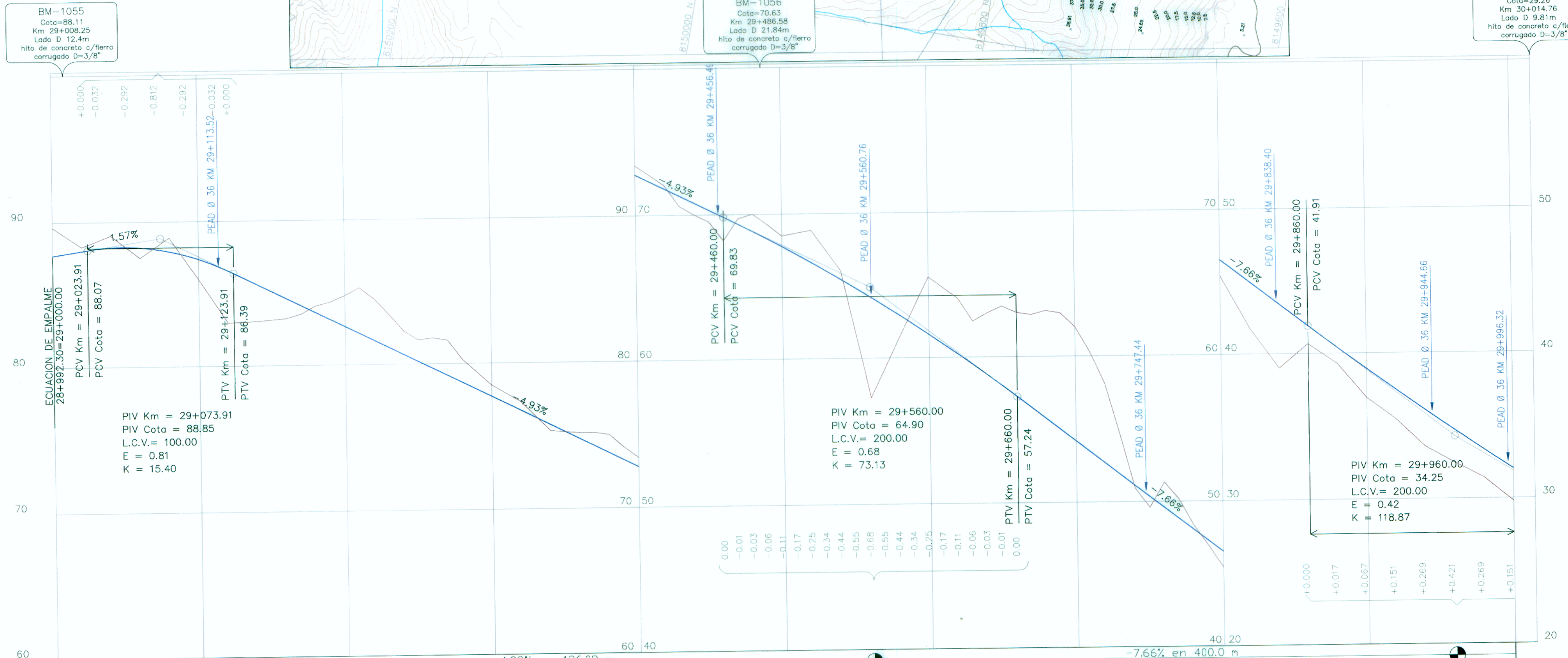
ESCALA
H : 1/2000

KM 29



EQUACION DE EMPALME KM 29+024.015 = KM 29+000											
ELEMENTOS DE CURVAS HORIZONTALES											
C.No	S	A.D.	R	T.G.	L.C.	Lsp e	TS	SC ó PC	PI	CS ó PT	ST
93	D	51°41'4"	90.000	20.452	40.222	40.000	29+153.303	29+193.303	29+216.619	29+233.524	29+273.524
94	D	75°17'6"	80.000	34.484	65.118	40.000	29+351.462	29+391.462	29+433.765	29+456.580	29+496.580
95	I	141°28'15"	50.000	55.175	83.457	40.000	29+629.075	29+669.075	29+795.822	29+752.531	29+792.531

ESCALA
H : 1/2000
V : 1/200



PENDIENTE	1.57% en 123.3 m	-4.93% en 486.09 m	-7.66% en 400.0 m								
COTA DE SUBRASANTE	87.69, 87.85, 88.01, 88.15, 88.24, 88.26, 88.28, 88.10, 87.50, 86.21, 87.44, 87.69, 85.99, 87.38, 84.48, 87.01, 82.97, 86.58, 83.01, 86.09, 83.06, 85.60, 83.14, 85.10, 83.23, 84.61, 83.54, 84.12, 84.06, 83.62, 84.34, 83.13, 84.77, 82.64, 85.29, 82.15, 84.52, 81.65, 83.44, 81.16, 82.30, 80.67, 81.66, 80.18, 81.78, 79.68, 81.61, 79.19, 80.29, 78.70, 79.38, 78.20, 78.48, 77.71, 77.88, 77.22, 77.29, 76.73, 77.29, 76.23, 76.30, 75.74, 75.31, 75.23, 75.25, 75.14, 74.75, 75.00, 73.77, 74.14, 73.28, 73.41, 72.78, 72.74, 72.29, 72.03, 71.80, 70.59, 71.31, 70.00, 70.81, 69.51, 70.32, 68.20, 69.83, 69.69, 68.33, 70.00, 68.81, 69.28, 68.29, 68.58, 67.28, 68.67, 67.19, 68.85, 66.62, 67.45, 66.04, 66.05, 65.45, 61.66, 64.84, 57.26, 64.22, 63.58, 61.46, 62.93, 63.50, 62.27, 65.55, 61.59, 64.80, 60.90, 64.05, 60.19, 62.47, 59.47, 63.03, 58.74, 63.03, 58.00, 63.49, 58.00, 63.04, 57.24, 63.15, 55.70, 62.98, 54.94, 62.02, 54.17, 60.27, 53.41, 58.08, 52.64, 54.63, 51.87, 50.92, 51.11, 49.59, 50.34, 51.32, 49.57, 50.14, 48.81, 48.34, 48.04, 46.91, 47.28, 45.42, 46.51, 43.60, 45.74, 41.78, 44.98, 40.39, 44.21, 39.00, 43.44, 39.63, 42.68, 40.67, 41.91, 39.97, 41.15, 39.27, 40.40, 38.09, 39.65, 36.91, 38.91, 36.18, 38.19, 35.44, 37.47, 34.49, 36.75, 33.54, 36.05, 32.99, 35.36, 32.44, 34.67, 31.92, 33.99, 31.41, 32.66, 30.60, 32.66, 28.79, 32.01										
COTA DE TERRENO	89.64, 88.96, 88.28, 86.67, 89.05, 88.28, 88.19, 88.10, 87.44, 87.69, 85.99, 87.38, 84.48, 87.01, 82.97, 86.58, 83.01, 86.09, 83.06, 85.60, 83.14, 85.10, 83.23, 84.61, 83.54, 84.12, 84.06, 83.62, 84.34, 83.13, 84.77, 82.64, 85.29, 82.15, 84.52, 81.65, 83.44, 81.16, 82.30, 80.67, 81.66, 80.18, 81.78, 79.68, 81.61, 79.19, 80.29, 78.70, 79.38, 78.20, 78.48, 77.71, 77.88, 77.22, 77.29, 76.73, 77.29, 76.23, 76.30, 75.74, 75.31, 75.23, 75.25, 75.14, 74.75, 75.00, 73.77, 74.14, 73.28, 73.41, 72.78, 72.74, 72.29, 72.03, 71.80, 70.59, 71.31, 70.00, 70.81, 69.51, 70.32, 68.20, 69.83, 69.69, 68.33, 70.00, 68.81, 69.28, 68.29, 68.58, 67.28, 68.67, 67.19, 68.85, 66.62, 67.45, 66.04, 66.05, 65.45, 61.66, 64.84, 57.26, 64.22, 63.58, 61.46, 62.93, 63.50, 62.27, 65.55, 61.59, 64.80, 60.90, 64.05, 60.19, 62.47, 59.47, 63.03, 58.74, 63.03, 58.00, 63.49, 58.00, 63.04, 57.24, 63.15, 55.70, 62.98, 54.94, 62.02, 54.17, 60.27, 53.41, 58.08, 52.64, 54.63, 51.87, 50.92, 51.11, 49.59, 50.34, 51.32, 49.57, 50.14, 48.81, 48.34, 48.04, 46.91, 47.28, 45.42, 46.51, 43.60, 45.74, 41.78, 44.98, 40.39, 44.21, 39.00, 43.44, 39.63, 42.68, 40.67, 41.91, 39.97, 41.15, 39.27, 40.40, 38.09, 39.65, 36.91, 38.91, 36.18, 38.19, 35.44, 37.47, 34.49, 36.75, 33.54, 36.05, 32.99, 35.36, 32.44, 34.67, 31.92, 33.99, 31.41, 32.66, 30.60, 32.66, 28.79, 32.01										
ALINEAMIENTO	CN 93 D	CN 94 D	CN 95 I								
DIAGRAMA DE PERALTES	CN 93 D P=6% LT=40m	CN 94 D P=8% LT=40m	CN 95 I P=8% LT=40m								
DRENAJE OBRAS DE ARTE	29+113.50 PEAD 36° (PROY) L=17.4m	29+456.40 PEAD 36° (PROY) L=19.58m	29+580.7 PEAD 36° (PROY) L=25.86m								
KILOMETRAJE	29+000	29+100	29+200	29+300	29+400	29+500	29+600	29+700	29+800	29+900	30+000

LEYENDA

- EJE
- BORDE DE VÍA (EXISTENTE)
- BORDE DE CASA
- CERCO
- BORDILLO
- CURVA NIVEL MADRE
- CURVA NIVEL SIMPLE
- POSTE ENERGIA, MADERA
- BM
- ALCANTARILLA
- PUENTE
- CANAL
- ACCESO
- LIMIT. PROPIEDAD

PERFIL:

- PERFIL DE TERRENO EJE PROYECTADO
- PERFIL RASANTE EJE PROYECTADO

CC = 120m
CR = 120m
ZB = 120m

- CUNETA DE TIERRA
- CUNETA REVESTIDA
- ZANJA DE DRENAJE

ING. RAUL CHIRITO SIPAN
FELIX RAUL CHIRITO SIPAN
Ingeniero en Topografía, Trazo y Diseño Vial
CIP 53117

ING. JORGE PERARANDA CASTAÑEDA
Jorge Peraranda Castañeda
Ingeniero en Topografía, Trazo y Diseño Vial
CIP 9988

NOTA:
ESCALA MOSTRADA PARA EL FORMATO A1
PARA EL FORMATO A3 CONSIDERAR EL DOBLE



Diseñó: ING. RAUL CHIRITO
Verifico: ING. J. PERARANDA C.
Dibujó: E. SANCHEZ D.

Aprobó:

N°	FECHA	DESCRIPCION

ESTUDIO DEFINITIVO DE LA CARRETERA: CAMANA - DESVIO QUILCA - MATARANI - ILO - TACNA, TRAMO: DESVIO QUILCA - MATARANI
CONTRATO N°233-2008-MTC/20

PLANTA Y PERFIL
KM 29+000 - KM 30+000

ESCALA : INDICADA
FECHA: SETIEMBRE-2011
DV-PP-030-R-01A