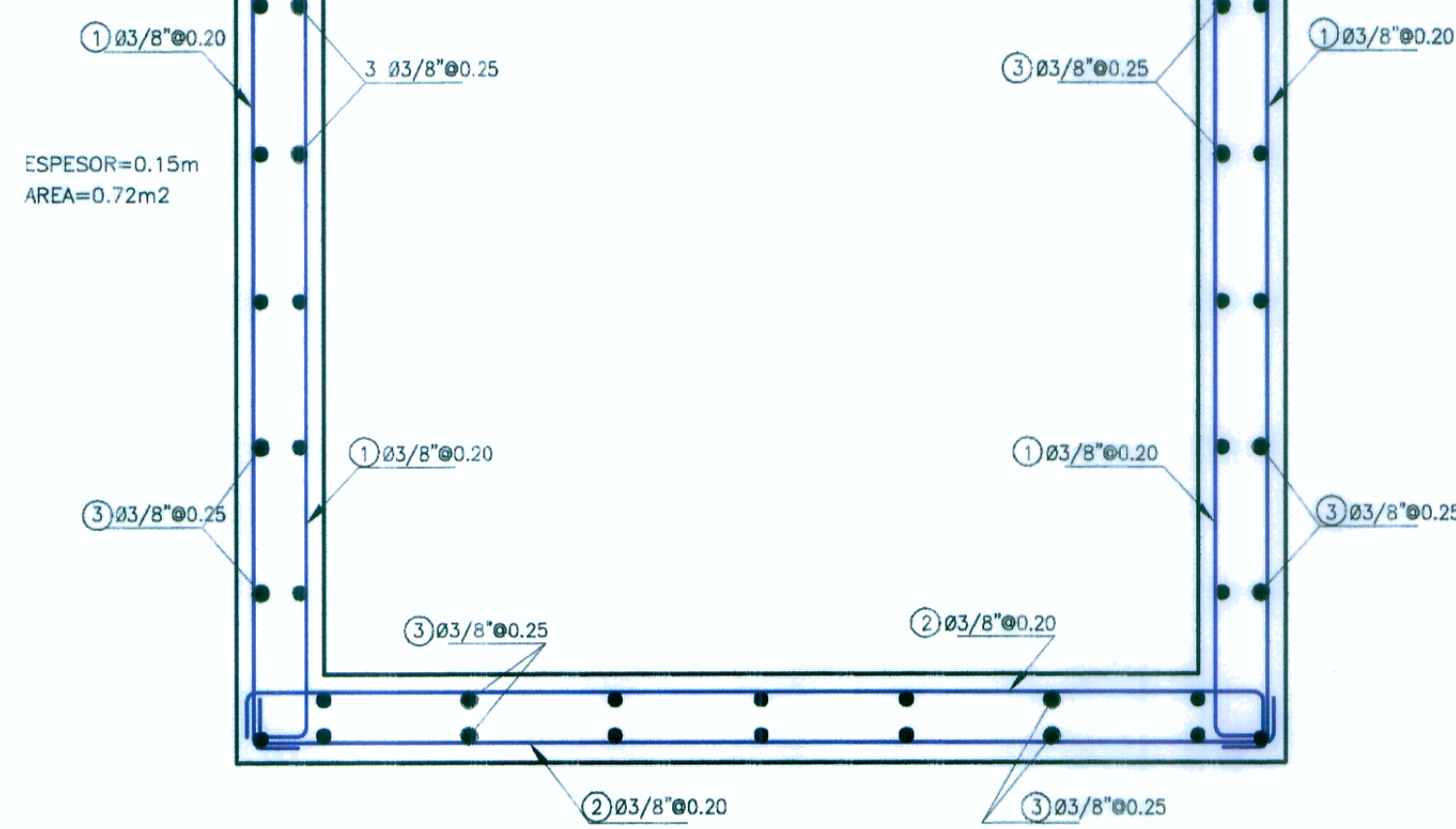
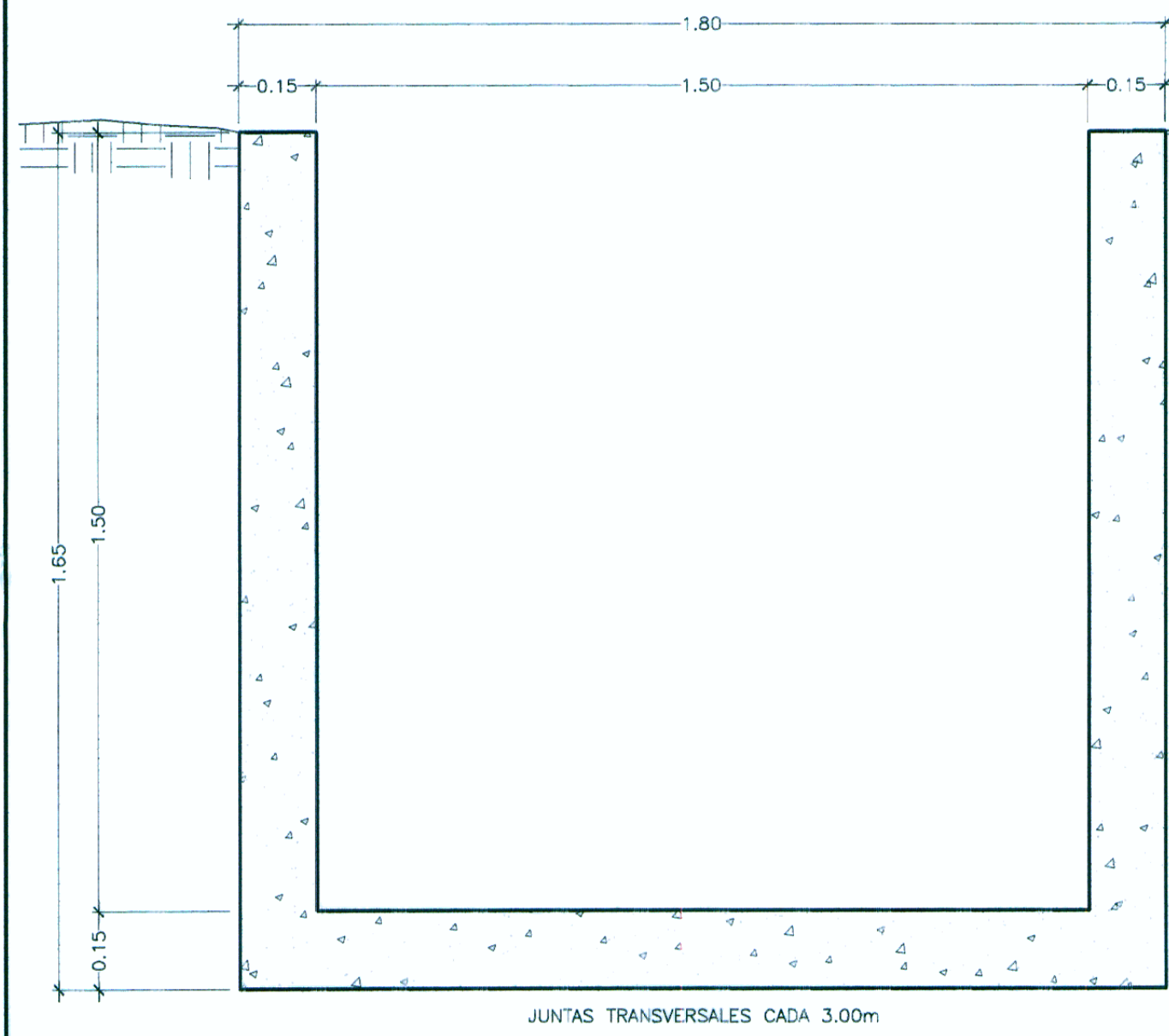


CANAL REVESTIDO-CANAL SIN REVESTIR

LA UBICACION DE CADA TIPO DE CANAL SE APPRECIA EN LOS PLANOS DE SISTEMA DE DRENAJE

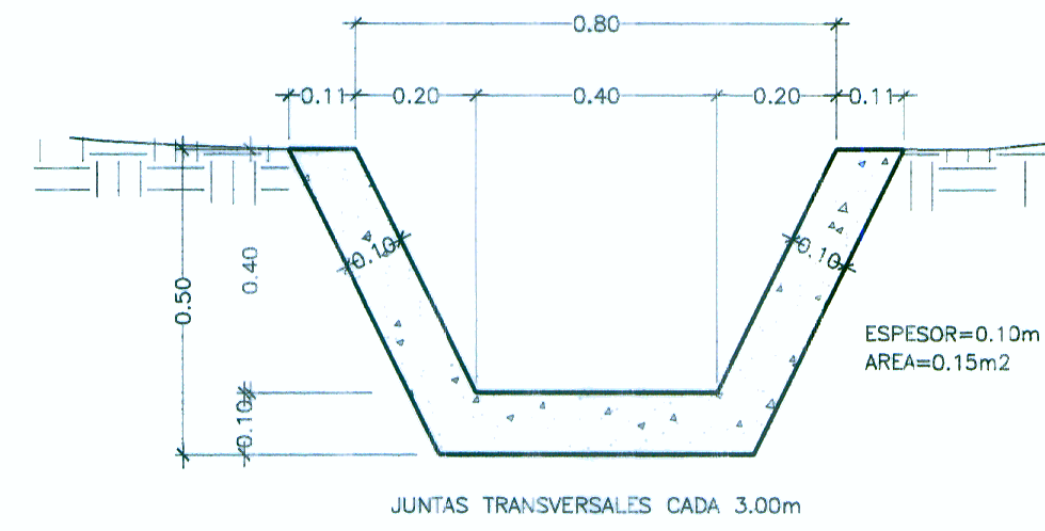
CANAL TIPO I
RECTANGULAR REVESTIDO H=1.50

CONCRETO $f'c=210 \text{ kg/cm}^2$
ESC.:1/12.5

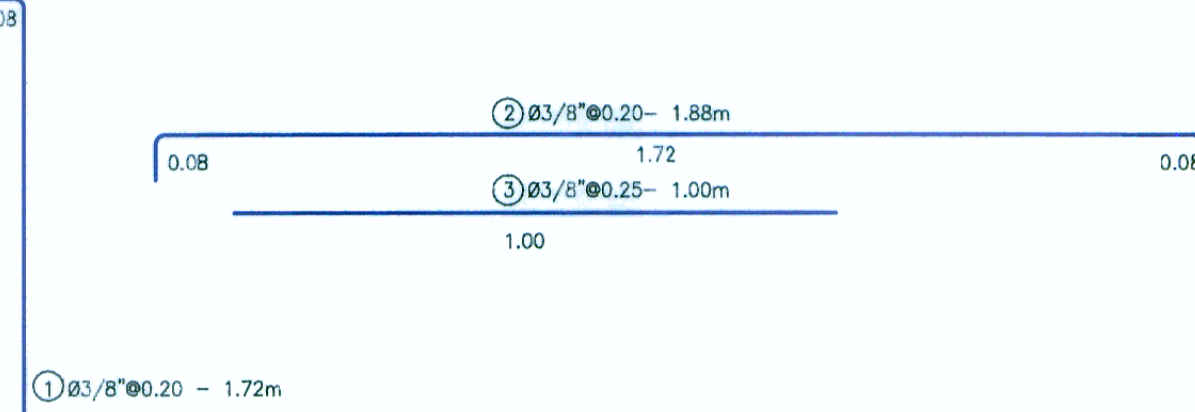


CANAL TIPO IV
TRAPEZOIDAL REVESTIDO H=0.40

CONCRETO $f'c=175 \text{ kg/cm}^2$
ESC.:1/12.5



DESPIECE DE ARMADURA

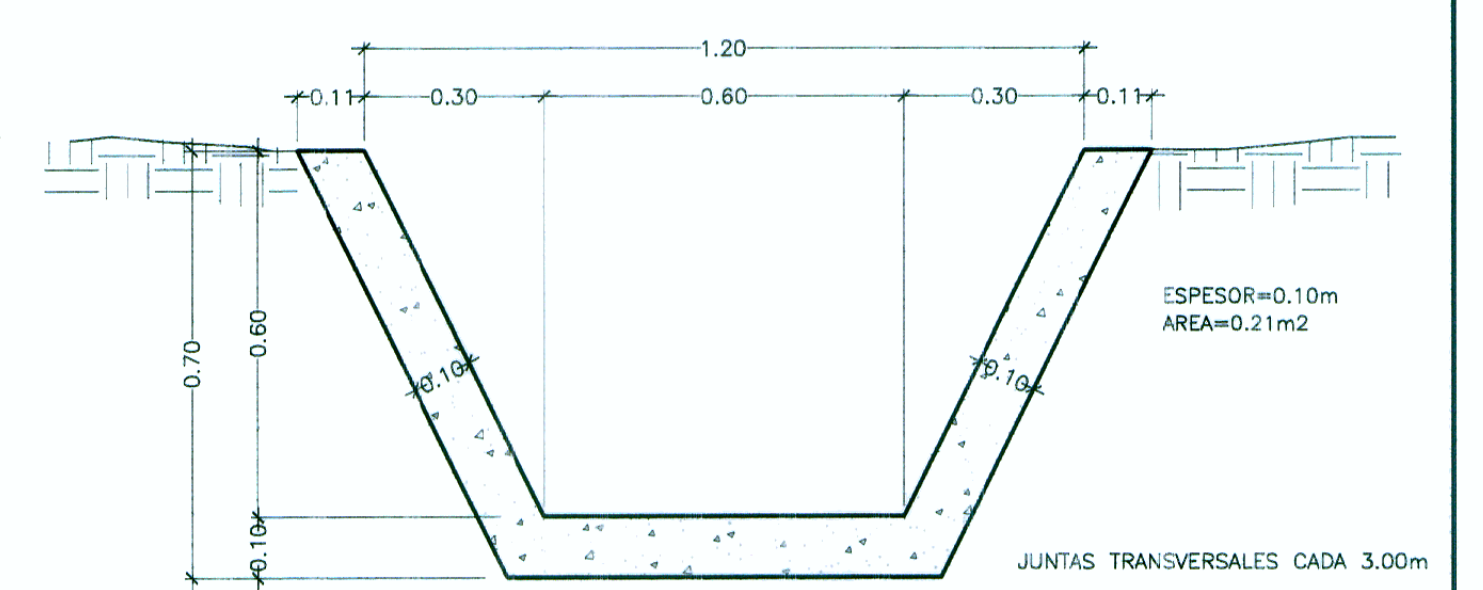


METRADO POR METRO LINEAL ($f'y=4200\text{kg/cm}^2$)

N°	LONG.	PIEZAS	Ø	PESO kg/ml	PESO PARCIAL
1	1.72	20	3/8"	0.56	19.26
2	1.88	10	3/8"	0.56	10.53
3	1.00	40	3/8"	0.56	22.40
TOTAL					52.19kg

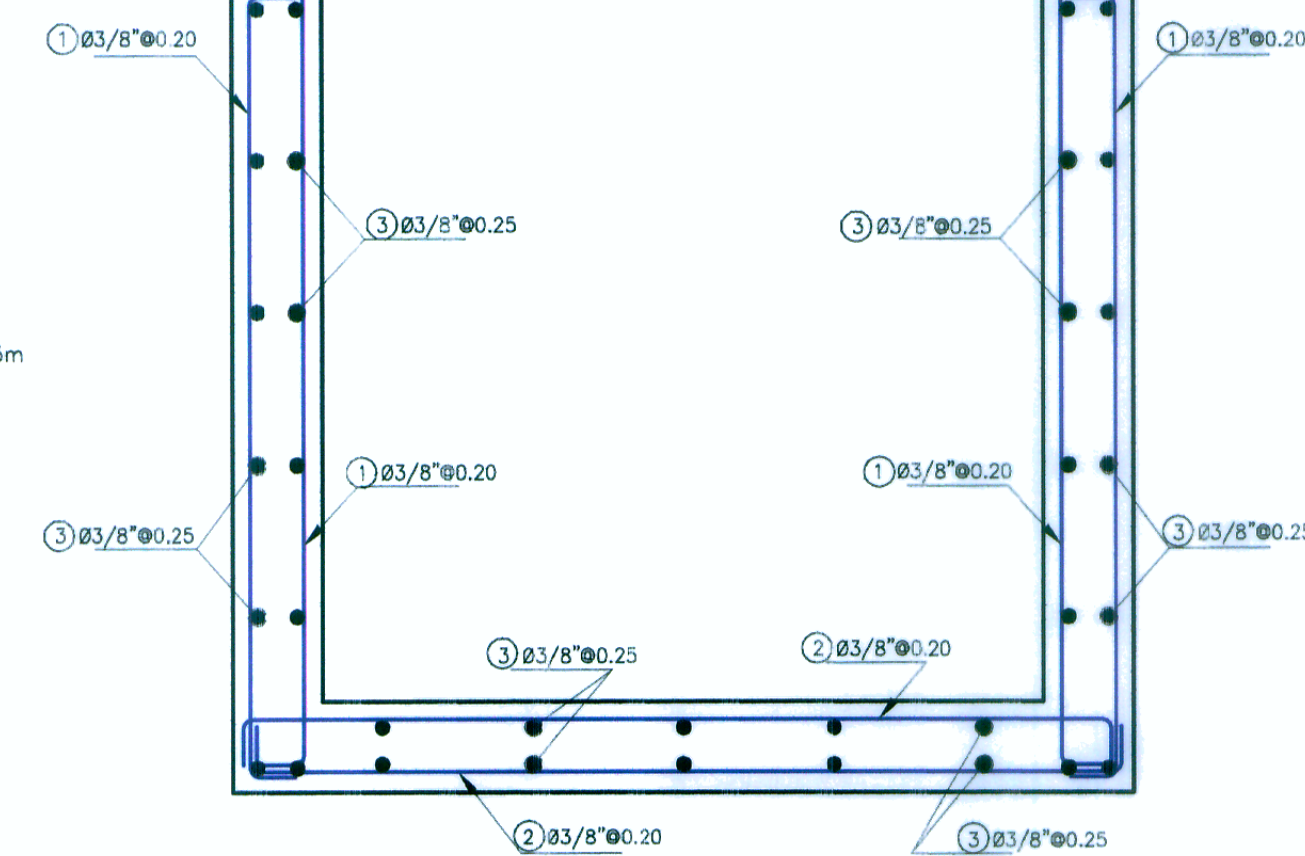
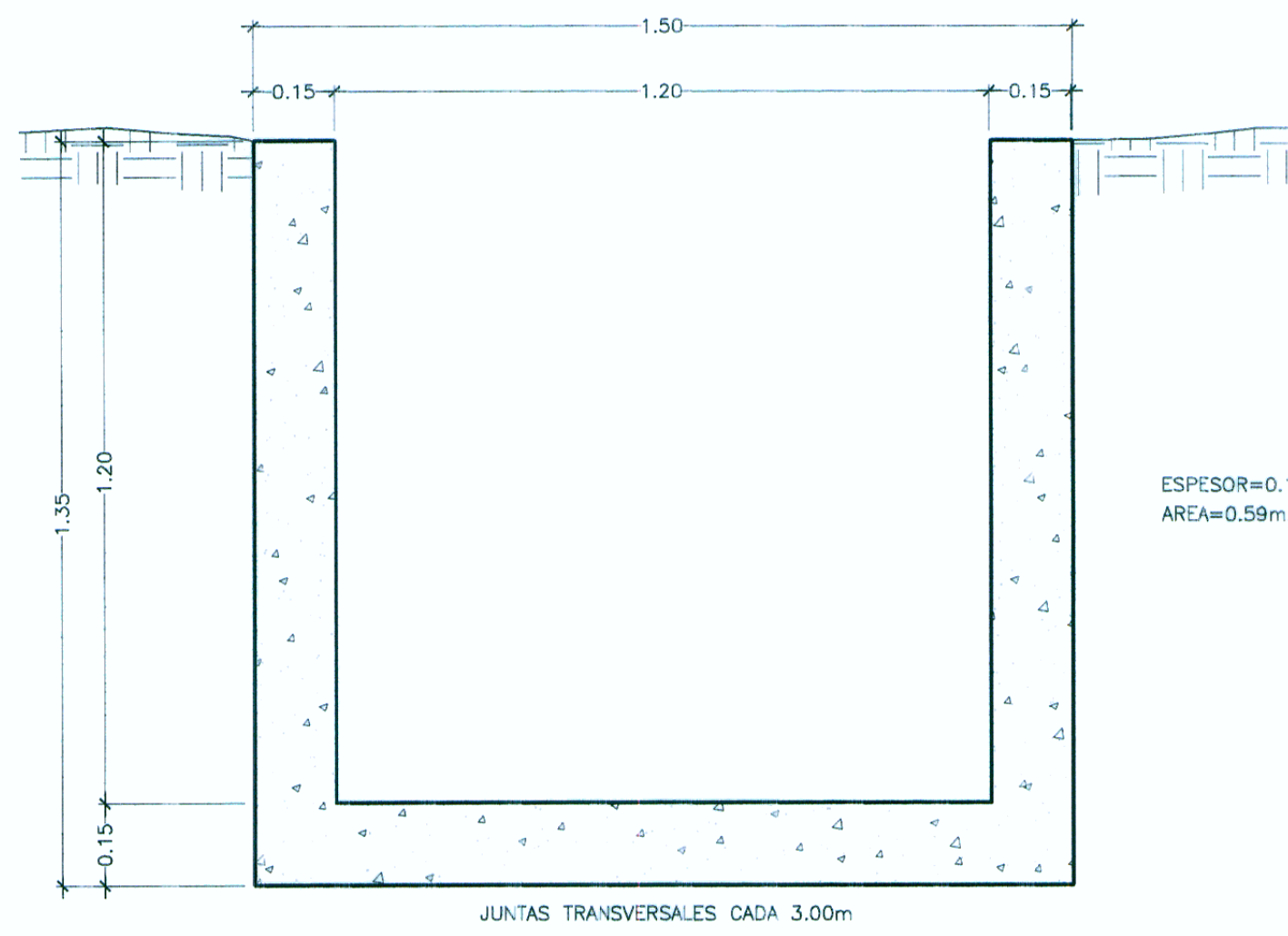
CANAL TIPO V
TRAPEZOIDAL REVESTIDO H=0.60

CONCRETO $f'c=175 \text{ kg/cm}^2$
ESC.:1/12.5



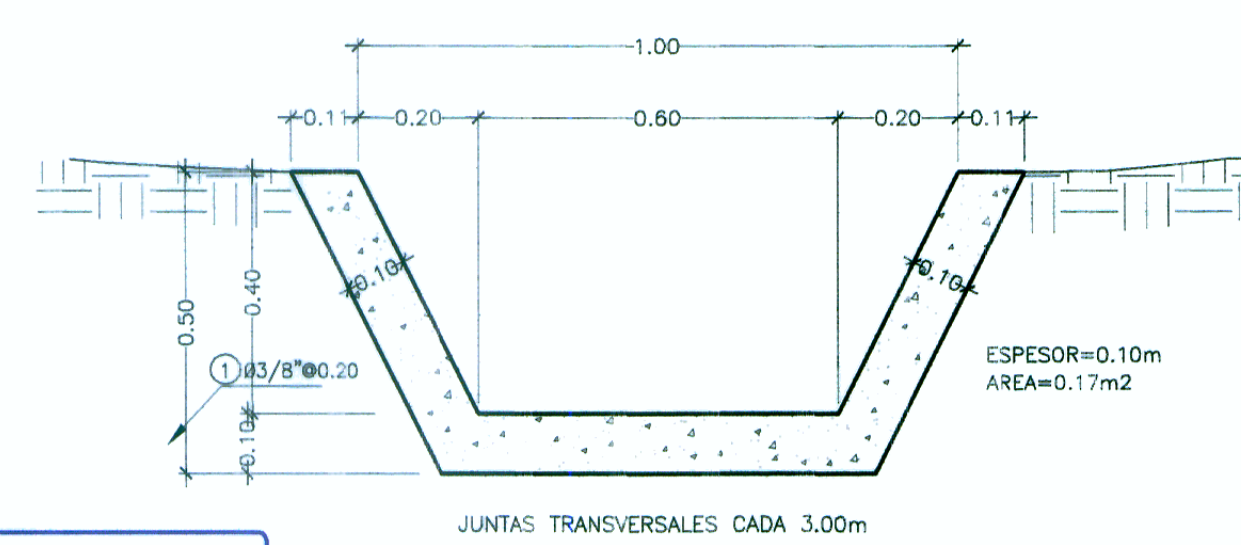
CANAL TIPO II
RECTANGULAR REVESTIDO H=1.20

CONCRETO $f'c=210 \text{ kg/cm}^2$
ESC.:1/12.5

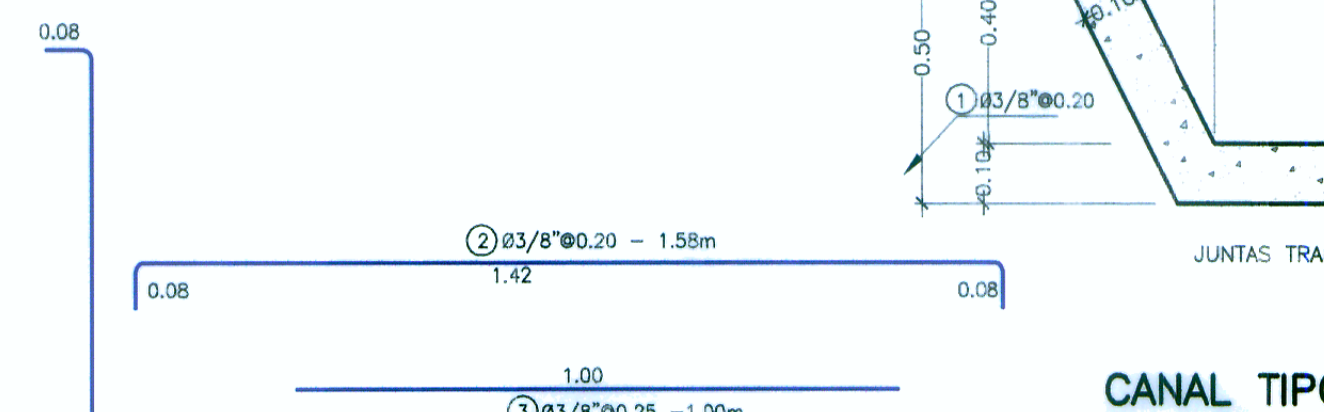


CANAL TIPO VI
TRAPEZOIDAL REVESTIDO H=0.40

CONCRETO $f'c=175 \text{ kg/cm}^2$
ESC.:1/12.5



DESPIECE DE ARMADURA

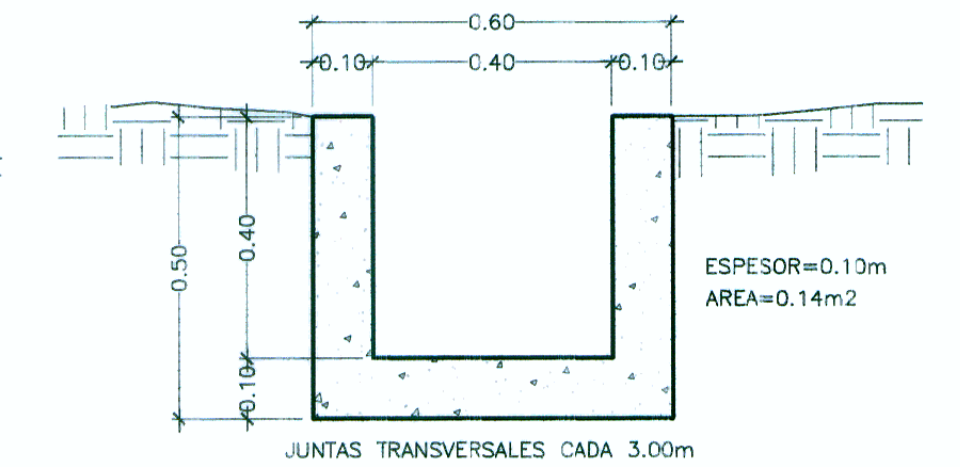


METRADO POR METRO LINEAL ($f'y=4200\text{kg/cm}^2$)

N°	LONG.	PIEZAS	Ø	PESO kg/ml	PESO PARCIAL
1	1.42	20	3/8"	0.56	15.90
2	1.58	10	3/8"	0.56	8.85
3	1.00	34	3/8"	0.56	19.04
TOTAL					43.79kg

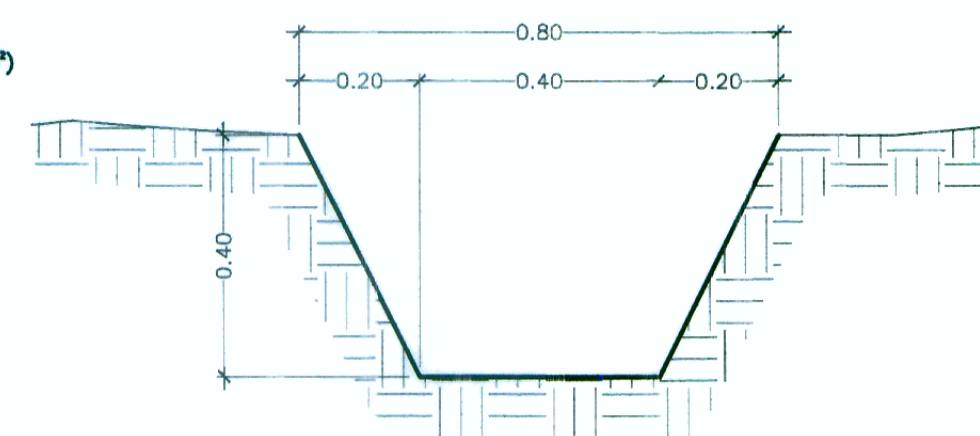
CANAL TIPO VII
RECTANGULAR REVESTIDO H=0.40

CONCRETO $f'c=175 \text{ kg/cm}^2$
ESC.:1/12.5



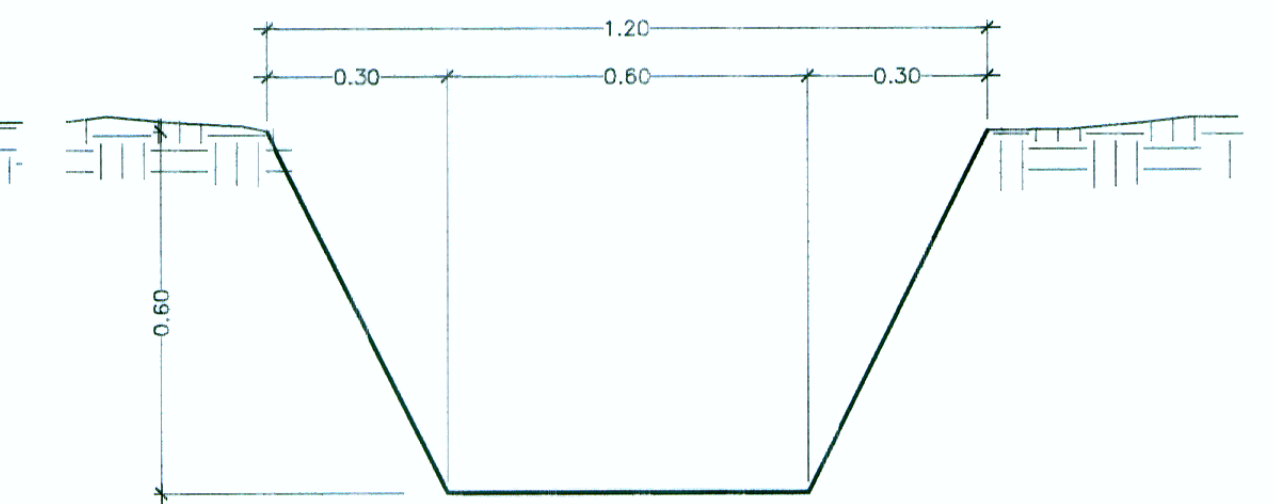
CANAL TIPO I
TRAPEZOIDAL S/REVESTIR H=0.40

ESC.:1/12.5



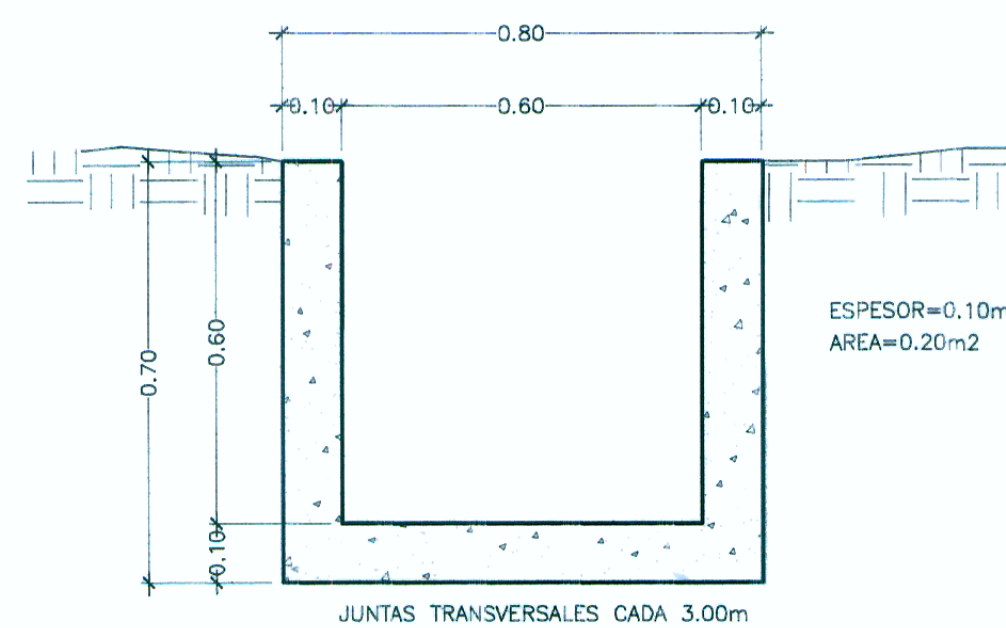
CANAL TIPO II
TRAPEZOIDAL S/REVESTIR H=0.60

ESC.:1/12.5



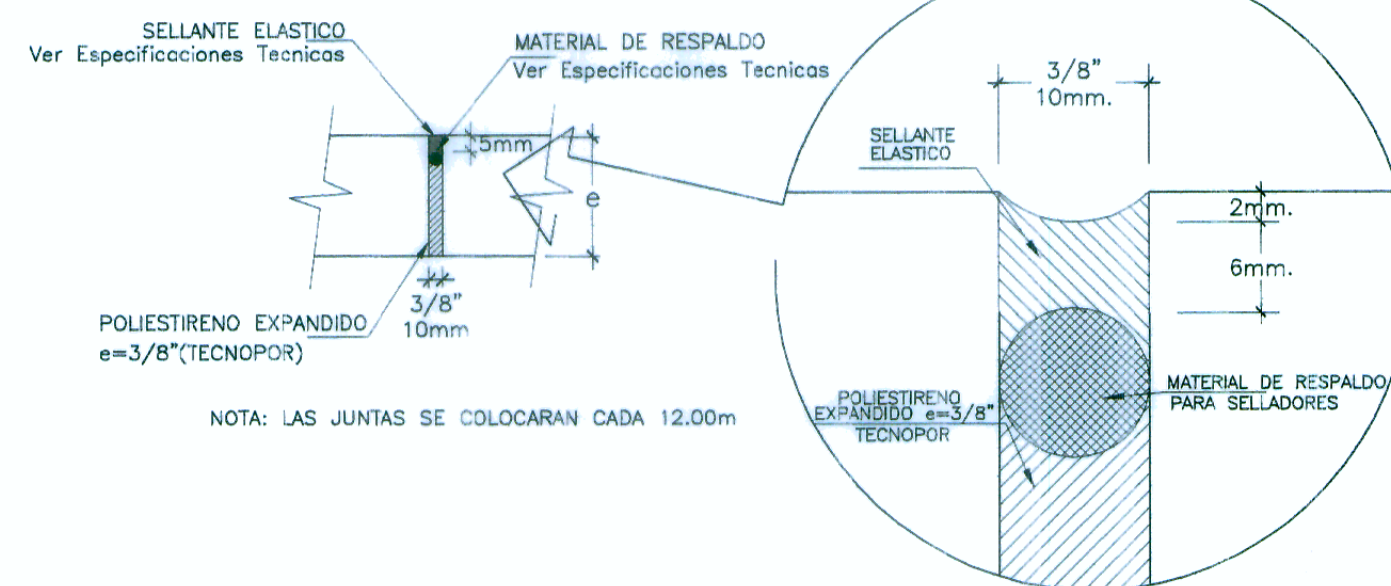
CANAL TIPO III
RECTANGULAR REVESTIDO H=0.60

CONCRETO $f'c=175 \text{ kg/cm}^2$
ESC.:1/12.5



DETALLE DE JUNTA DE DILATACIÓN
CORTE Y-Y

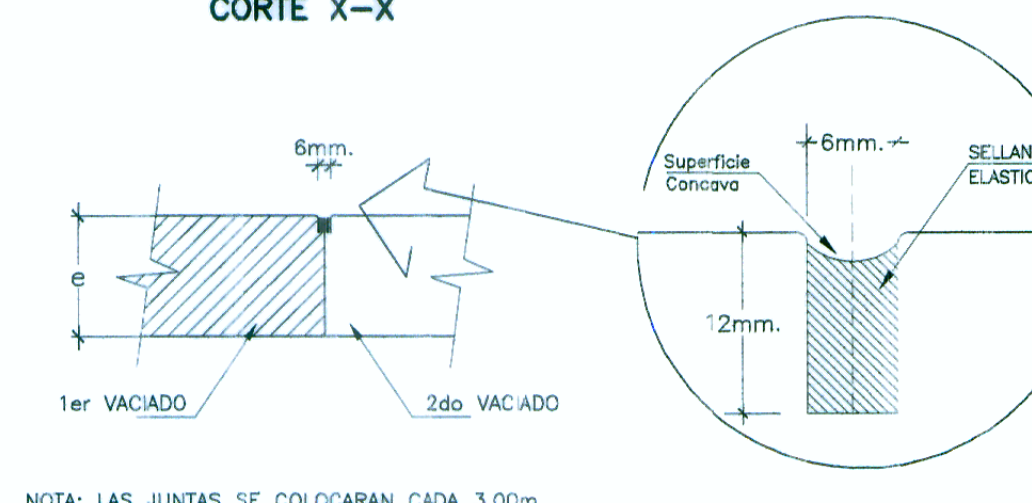
ESC.:1/5



NOTA: LAS JUNTAS SE COLOCARAN CADA 12.00m

DETALLE DE JUNTA DE CONSTRUCCIÓN
CORTE X-X

ESC.:1/5



NOTA: LAS JUNTAS SE COLOCARAN CADA 3.00m

HOB CONSULTORES S.A.

ING. JAVIER FLORES TORO
ING. ESTEBAN GONZALEZ
CIP N° 33350

HOB CONSULTORES S.A.

ING. WILLIAM RONI VINCENZO GUTIERREZ
ESP. HIDROLOGIA E HIDRAULICA
CIP N° 4744

HOB CONSULTORES S.A.

ING. CESAR EDISON GONZALEZ
ESP. HIDROLOGIA E HIDRAULICA
CIP N° 44324

CORDON DE RESPALDO PARA SELLADO DE JUNTAS

DIAMETRO DE LA JUNTA	DIAMETRO DE CORDON	Ø	Ø	Ø
3/16"	3/16"	1/4"	3/8"	1/2"
1/4"	1/4"	1/2"	3/4"	1"
3/8"	3/8"	1"	1 1/4"	1 1/2"
1/2"	1/2"	1 1/4"	1 3/4"	2"
5/8"	5/8"	1 3/4"	2"	2 1/4"
3/4"	3/4"	2"	2 1/2"	3"
1/2"	1/2"	2 1/4"	2 3/4"	3 1/4"
1 1/8"	1 1/8"	2 3/4"	3 1/4"	3 3/4"
1 1/4"	1 1/4"	3"	3 1/2"	4"
1 1/2"	1 1/2"	3 1/4"	3 3/4"	4 1/4"
1 3/4"	1 3/4"	3 3/4"	4 1/4"	4 3/4"
2"	2"	4"	4 1/2"	5"
2 1/4"	2 1/4"	4 1/4"	4 3/4"	5 1/4"
2 1/2"	2 1/2"	4 3/4"	5 1/4"	5 3/4"
3"	3"	5"	5 1/2"	6"