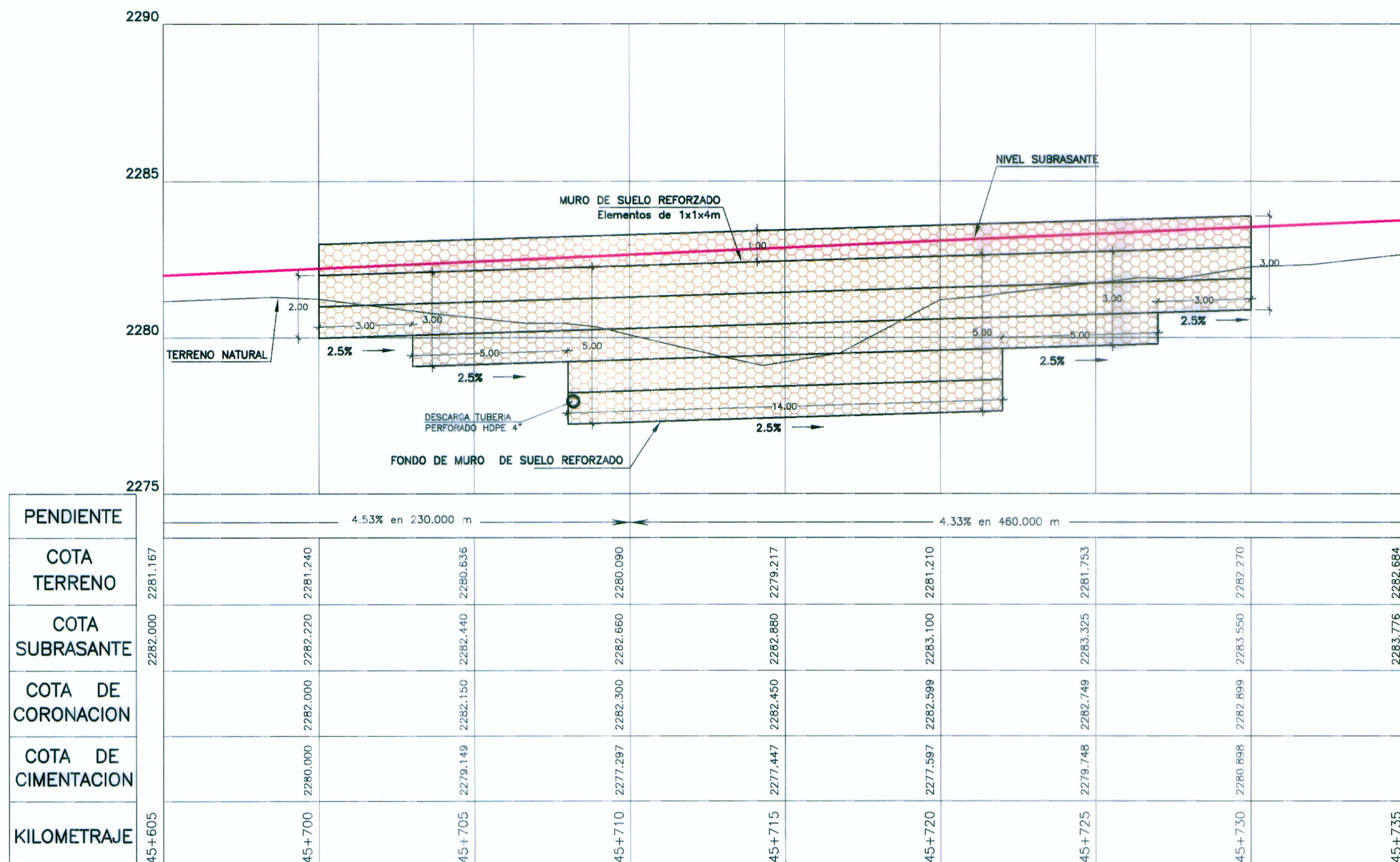
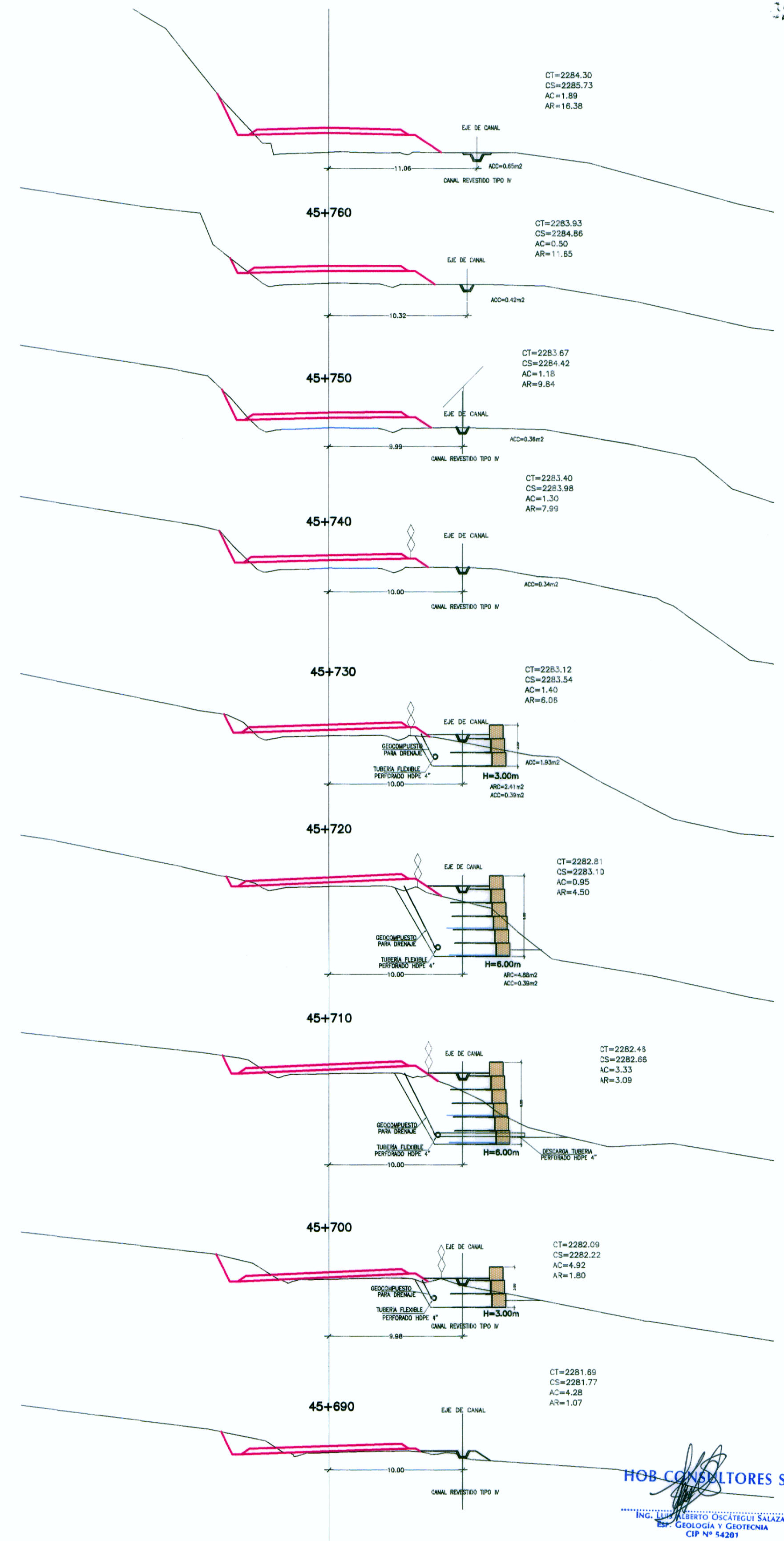
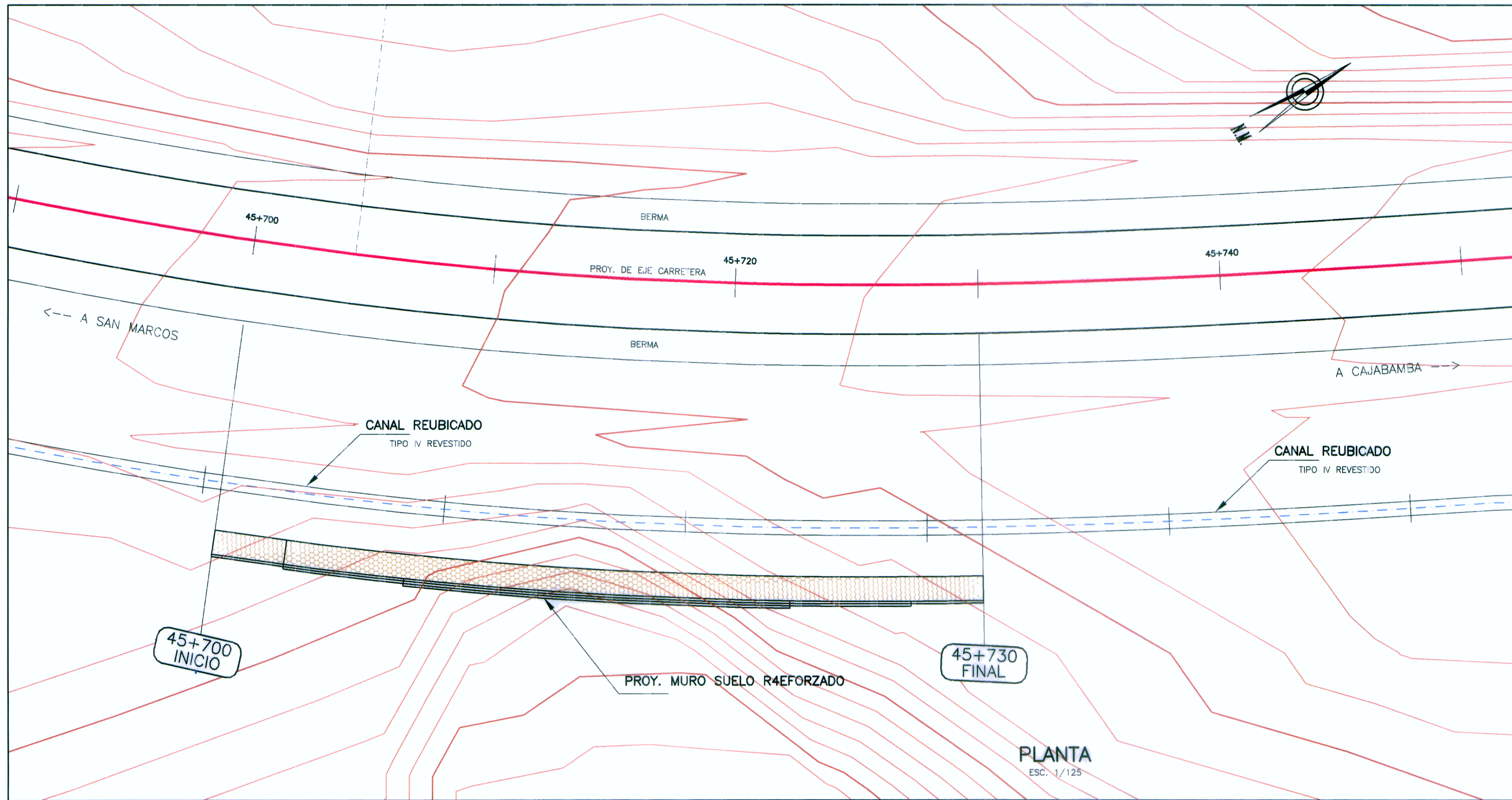


MURO SUELO REFORZADO
KM 45+700 - KM 45+730(DER)



PERFIL
ESC. 1/125

SECCIONES TRANSVERSALES
ESC. 1/125

HOB CONSULTORES S.A.
ING. ALBERTO OSCATEGUI SALAZAR
ESP. GEOLOGIA Y GEOTECNIA
CIP N° 44281

HOB CONSULTORES S.A.
ING. CESAR EDUARDO GONZALEZ MALPARTIDA
JEFE DE ESTUDIO
CIP N° 54324