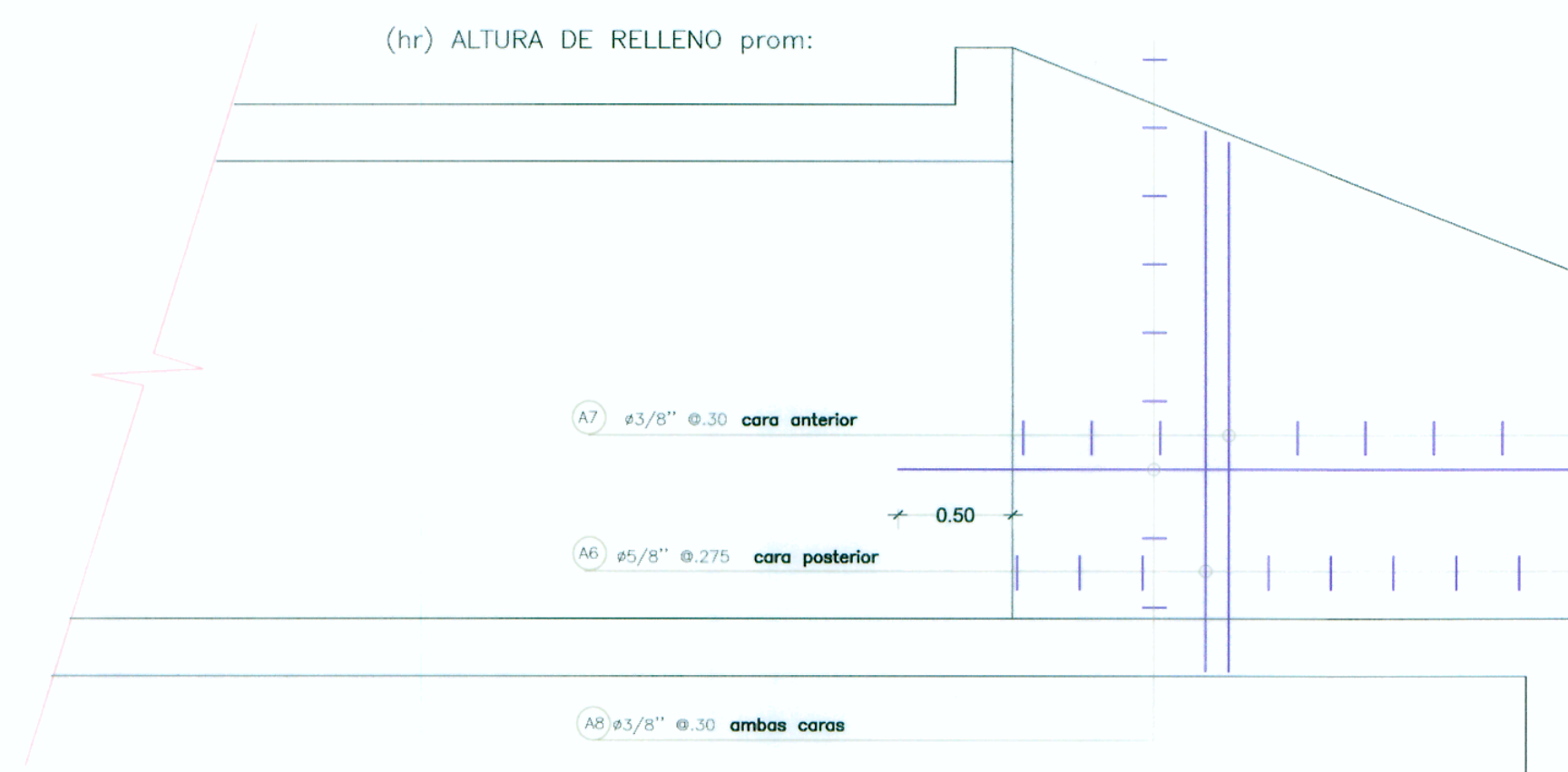
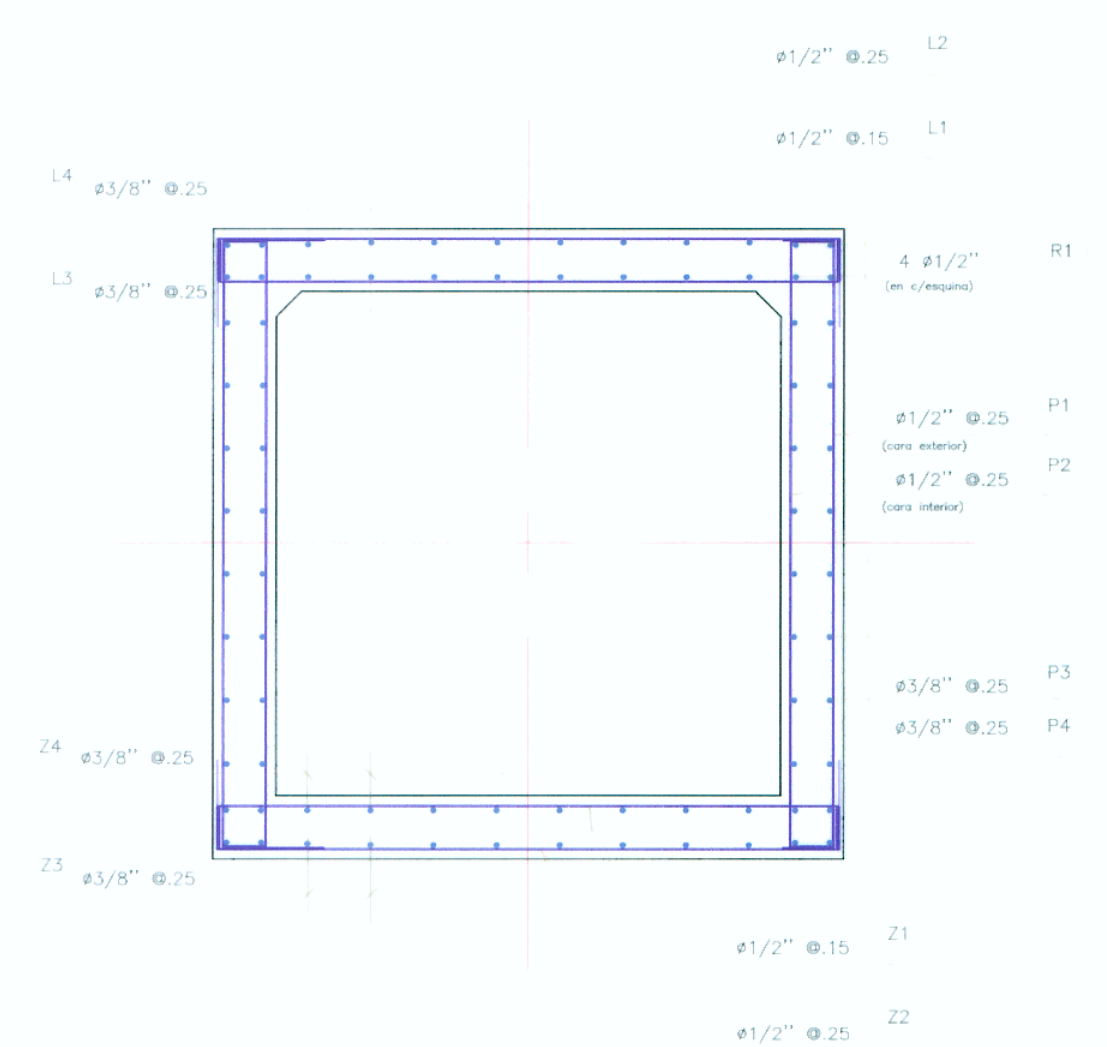
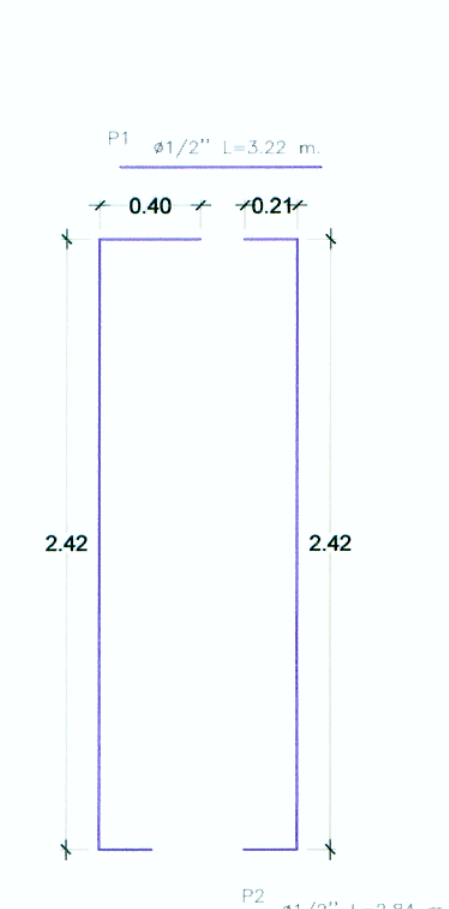
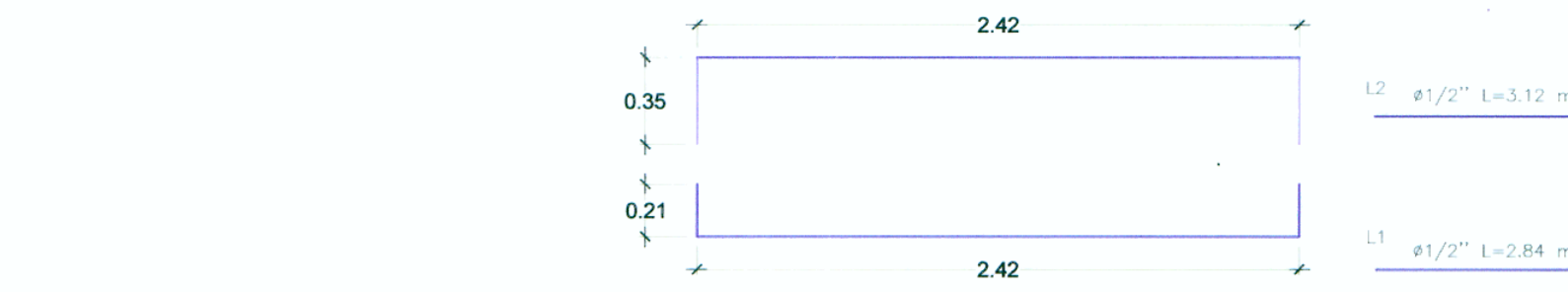


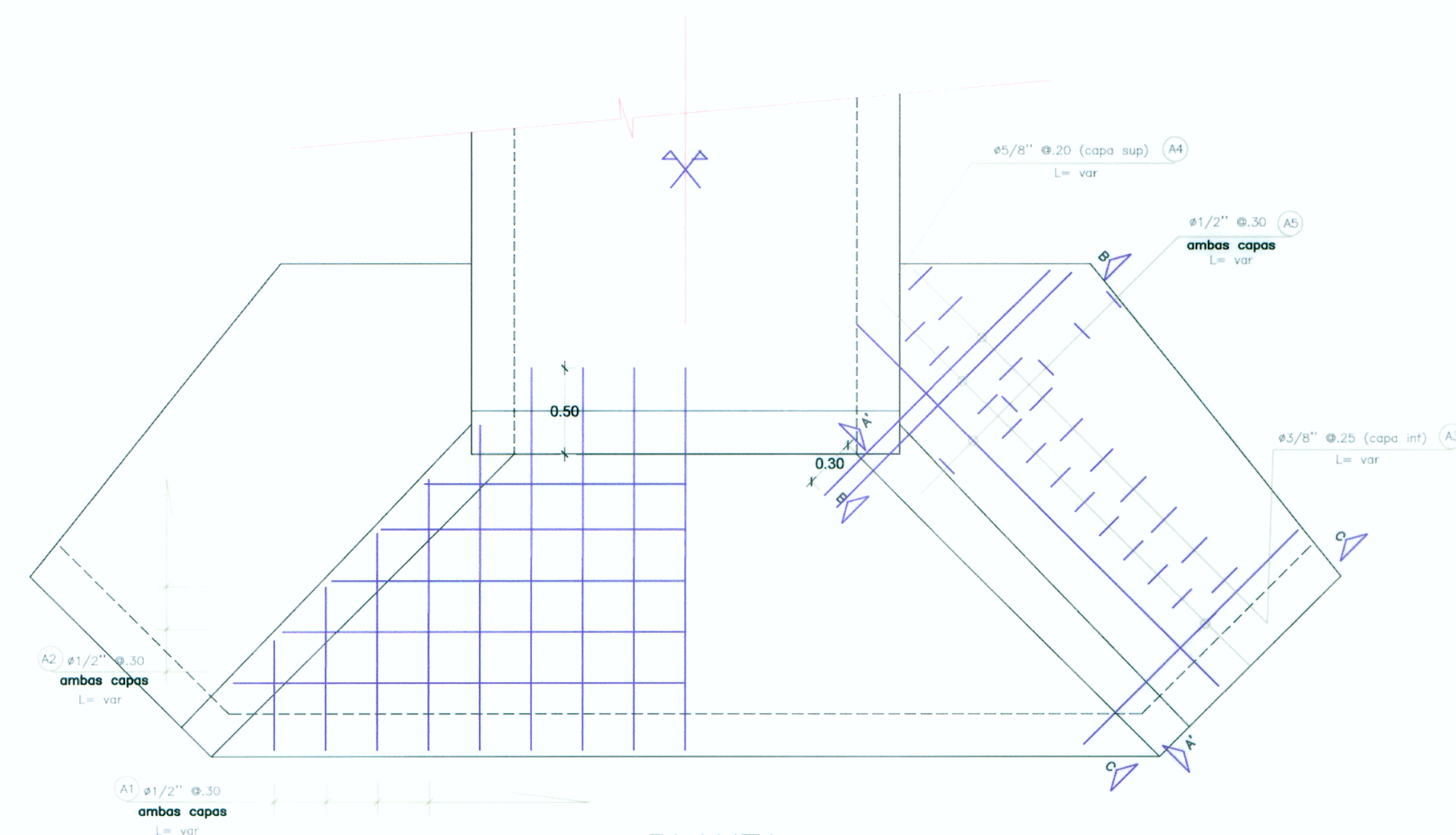
CORTE A-A
Esc: 1/25



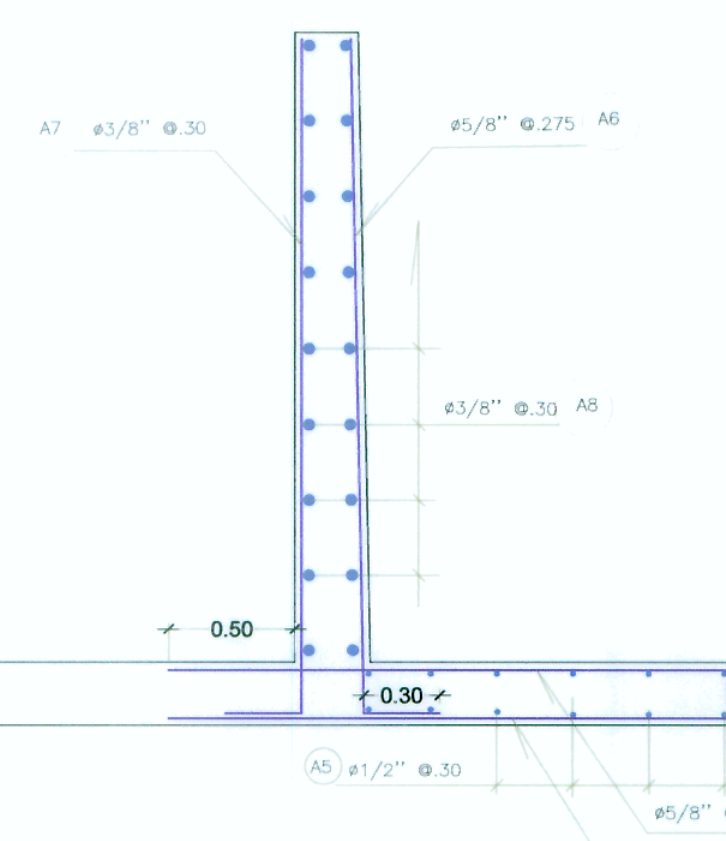
CORTE A-A
Esc: 1/25



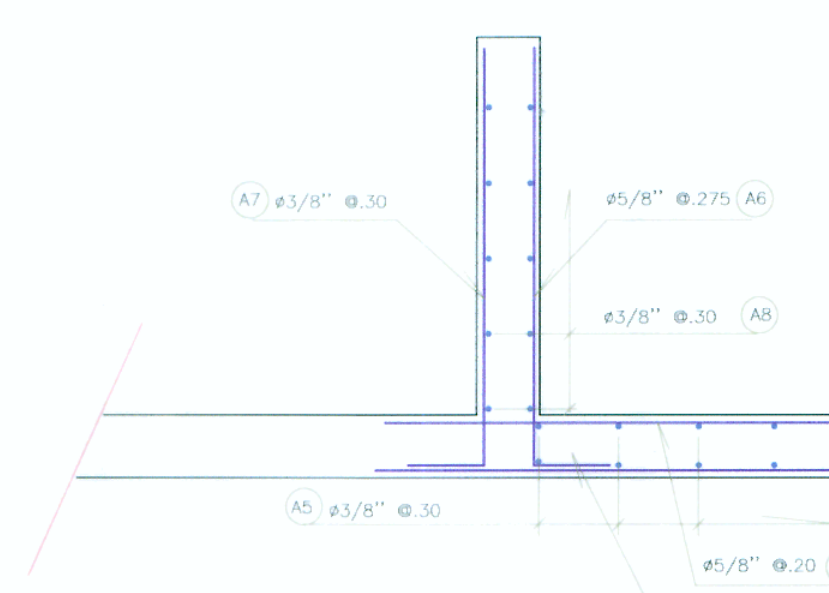
ARMADURA
Esc: 1/25



PLANTA
Esc: 1/25



CORTE B-B
(inicio de alero)
Esc: 1/25



CORTE C-C
(extremo de alero)
Esc: 1/25

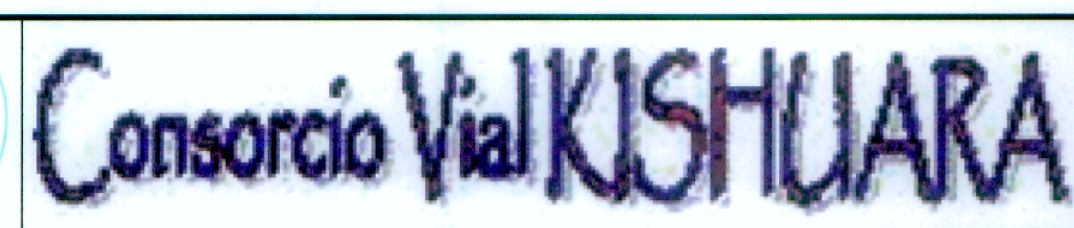
ANCLAJES - TRASLAPES

| Diámetro | Longitud (cm) | Superficie (cm²) | Superficie (m²) |
|----------|---------------|------------------|-----------------|
| 3/8" | 400 | 450 | 100 |
| 1/2" | 500 | 550 | 200 |
| 5/8" | 600 | 700 | 250 |
| 3/4" | 750 | 900 | 350 |
| 1" | 1000 | 1200 | 400 |

CONSORCIO VIAL KISHUARA
Ing. Luis Camacho Aranzaga
E.S. en Ingeniería Civil de Alto Nivel



CONSORCIO VIAL KISHUARA
Ing. Abraham R. Cabrera Navidad
E.S. en Ingeniería Civil de Alto Nivel



Diseño: Ing. C. PEREZ
Dibujo: E. JARA
Verifico:
Presento:

| REVISIONES | |
|------------|-------|
| Nº | FECHA |
| | |
| | |
| | |

ESTUDIO DEFINITIVO PARA LA REHABILITACION Y MEJORAMIENTO DE LA CARRETERA AYACUCHO-ABANCAY TRAMO : DV.KISHUARA - PTE. SAHUINTO

PLANO: MARCO DE CONCRETO ARMADO 2.00 x 2.00 CUERPO CENTRAL - CABEZALES ARMADURA

ESCALA: 1/400
FECHA: ENERO 2011
LAMINA: MC-02