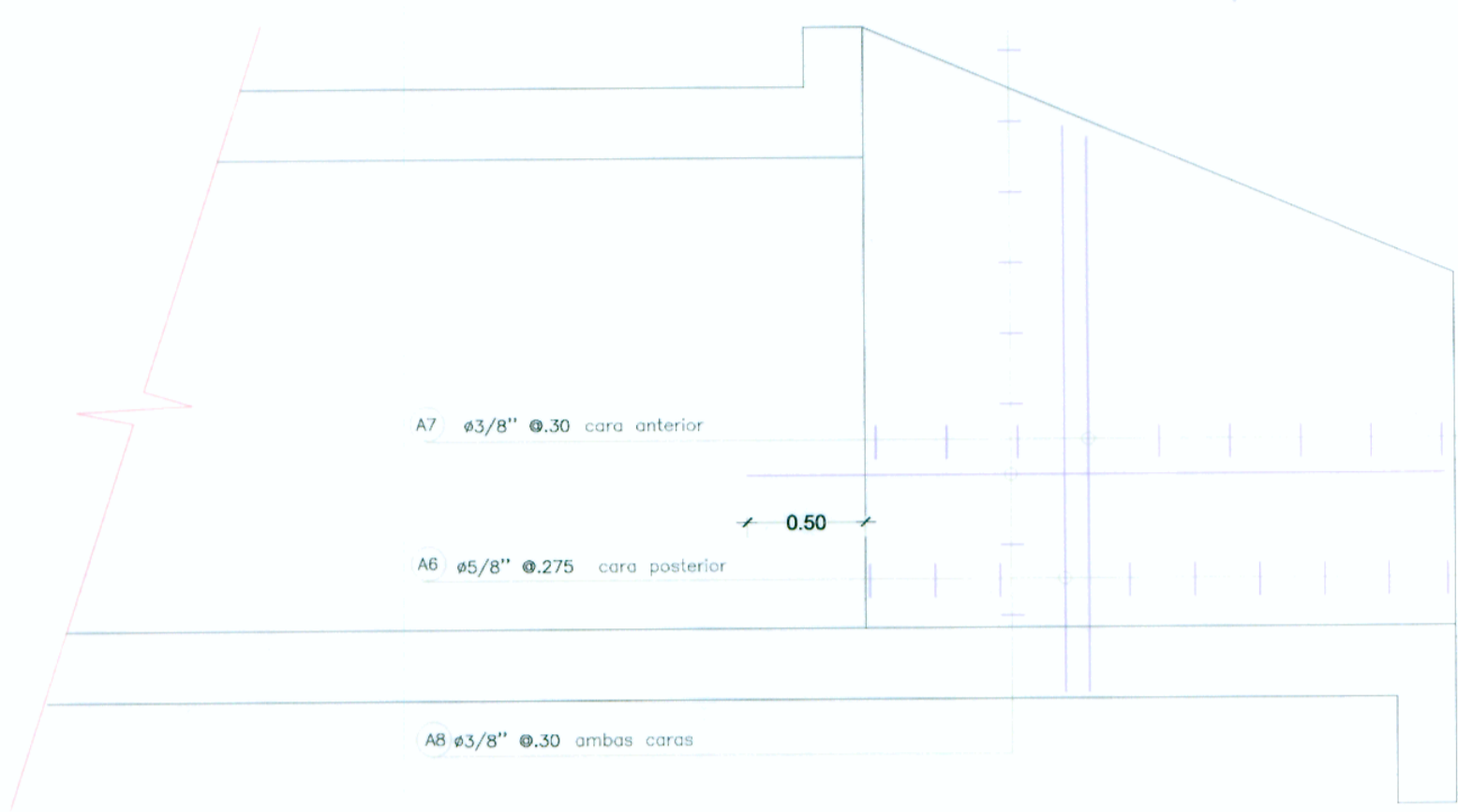
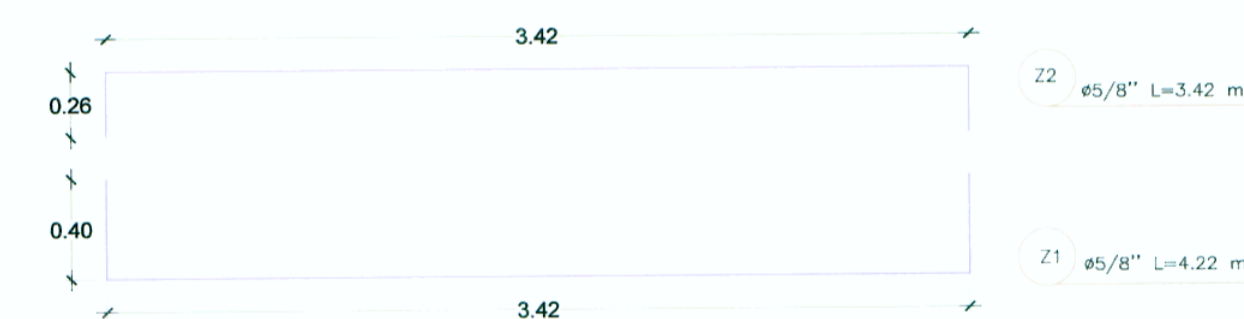
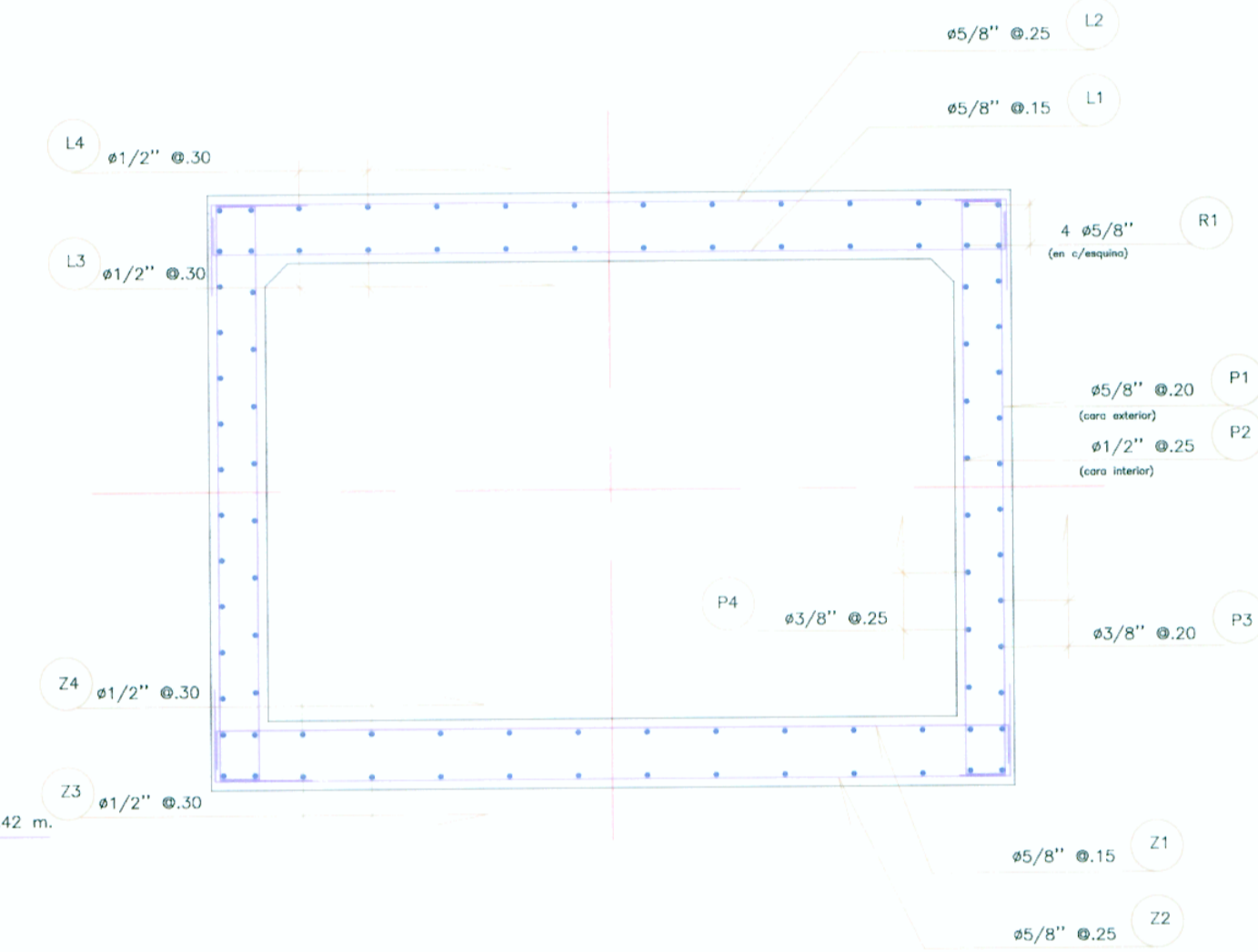
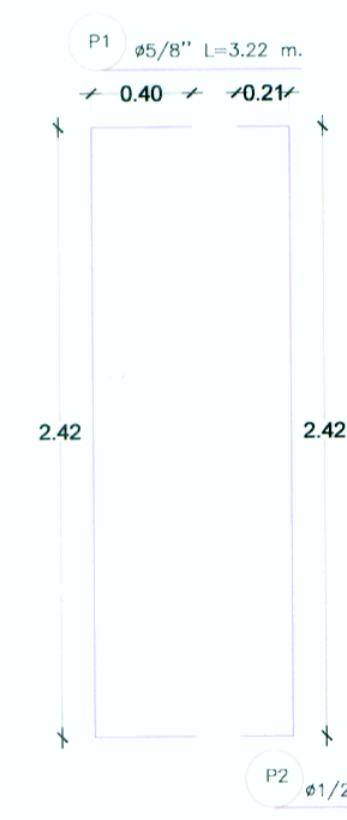
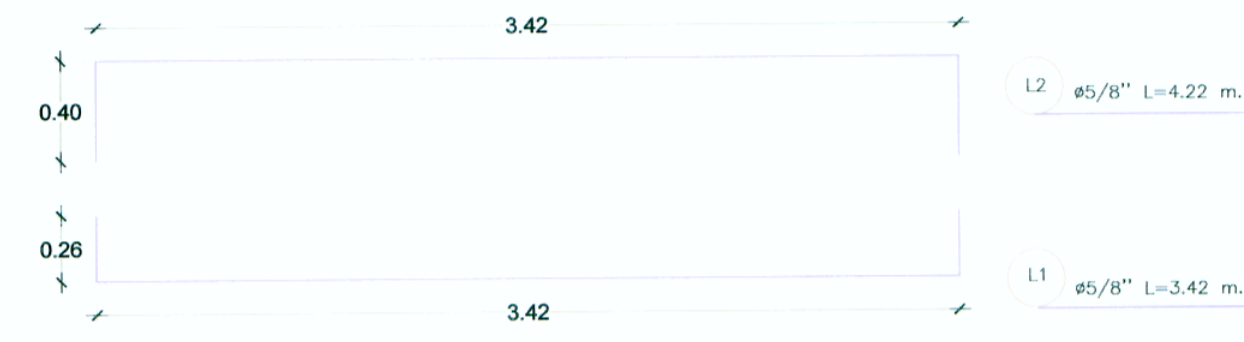


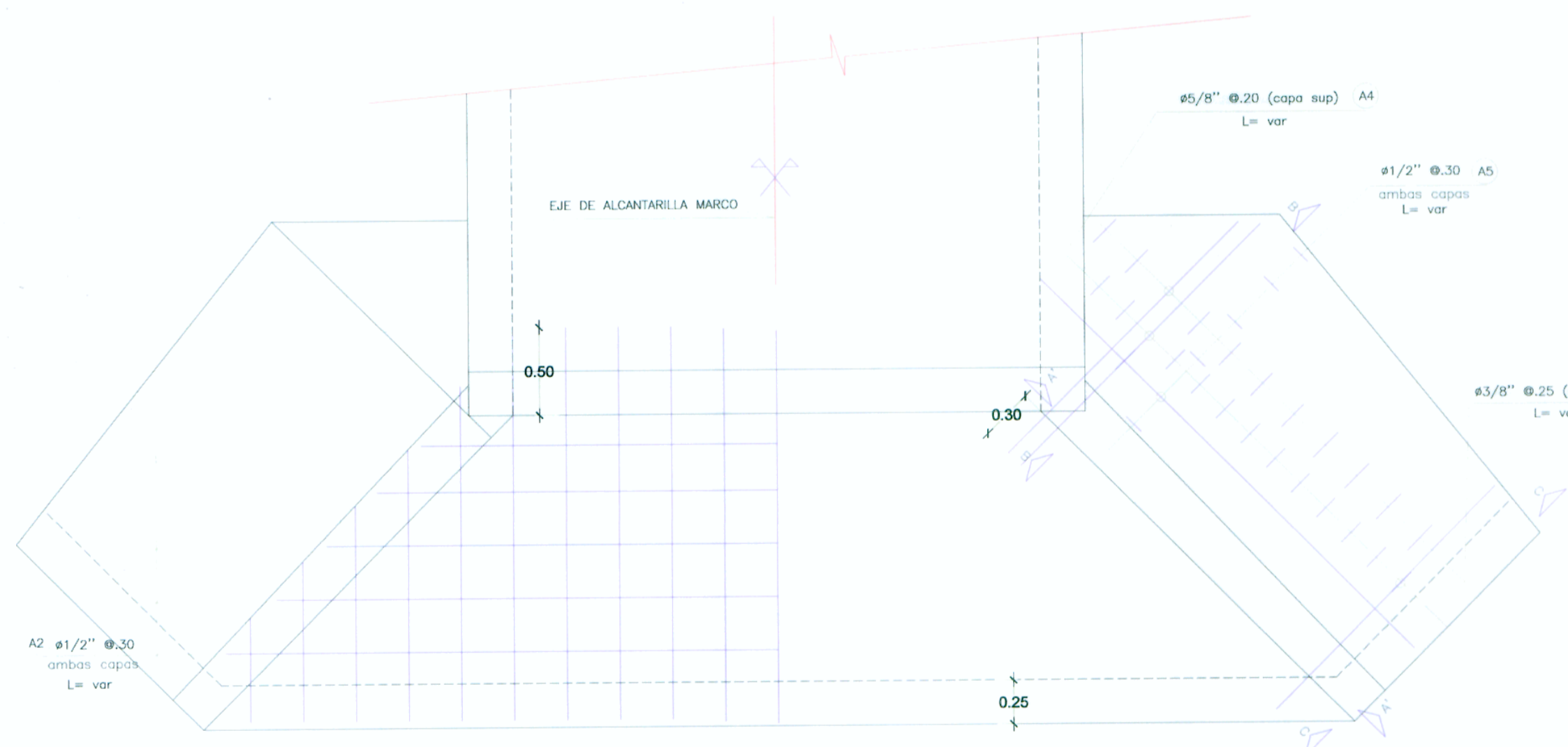
CORTE A-A
Escala: 1/25



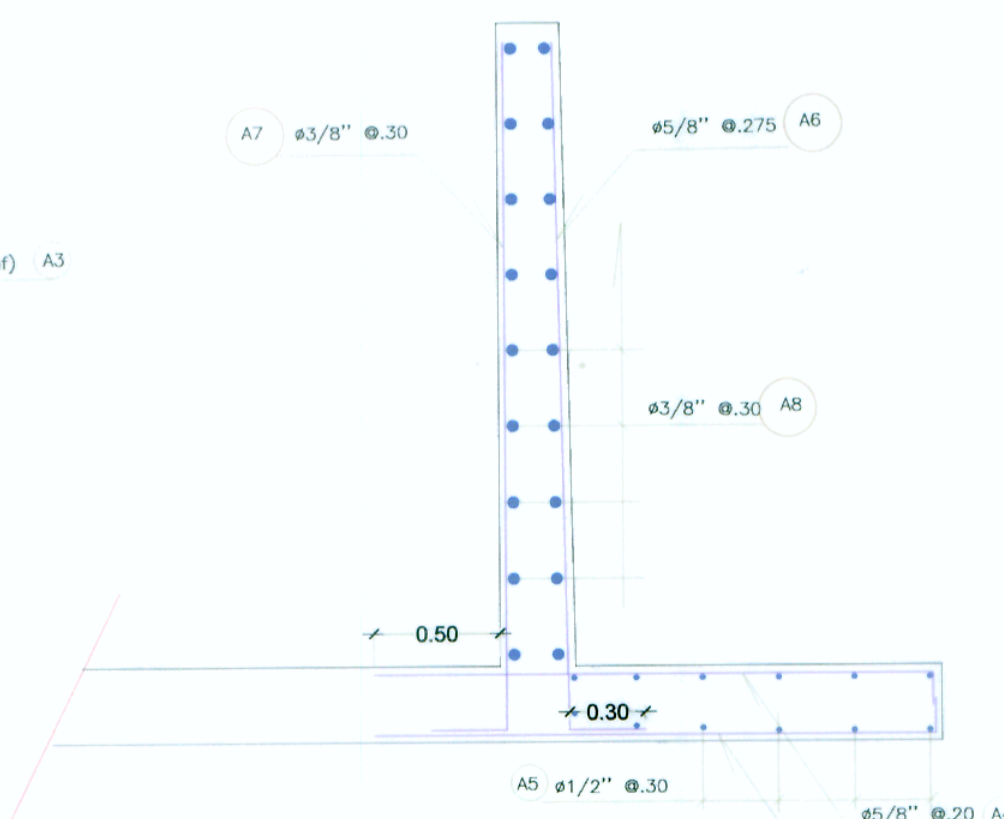
CORTE A'-A'
Escala: 1/25



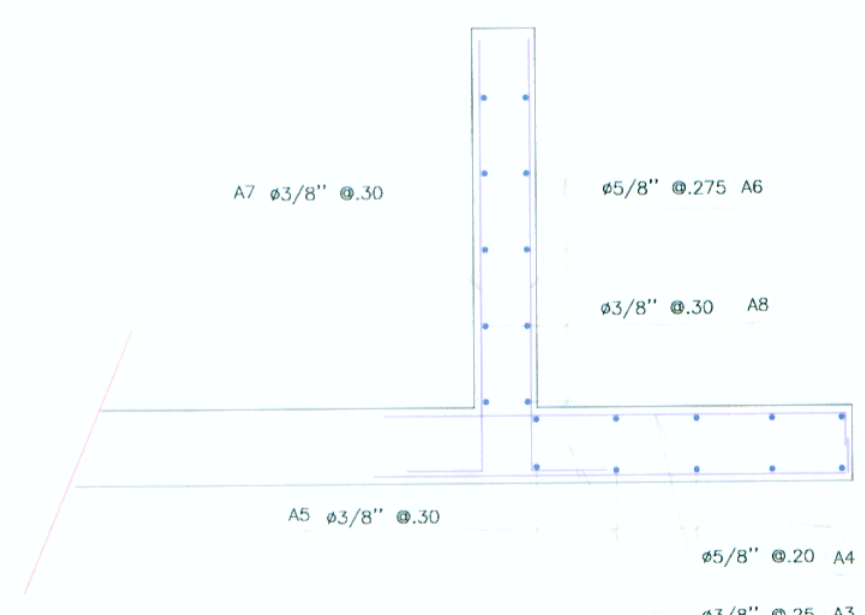
ARMADURA
Escala: 1/25



PLANTA
Escala: 1/25



CORTE B-B
(extremo de obra)
Escala: 1/25



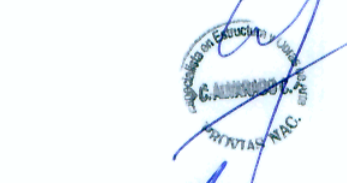
CORTE C-C
(extremo de obra)
Escala: 1/25

ANCLAJES - TRASLAPES

| Diámetro | Longitud de Anclaje | Longitud de Traslape |
|----------|---------------------|----------------------|
| 3/8" | 400 | 450 |
| 1/2" | 500 | 550 |
| 5/8" | 600 | 700 |
| 3/4" | 750 | 900 |
| 1" | 1000 | 1200 |



CONSORCIO VIAL KISHUARA
Ing. Luis Gamboa Aranzans
CIP No. 20518



CONSORCIO VIAL KISHUARA
Ing. Abraham R. Cabreris Nardoc
CIP No. 20518



Diseño: Ing. C. PEREZ
Dibujo: E. JARA
Verifico:
Presento:

Aprobó:

| REVISIONES | |
|------------|-------|
| Nº | FECHA |
| | |
| | |
| | |

ESTUDIO DEFINITIVO PARA LA REHABILITACION Y MEJORAMIENTO DE LA CARRETERA AYACUCHO-ABANCAY TRAMO : DV.KISHUARA - PTE. SAHUINTO

PLANO: MARCO DE CONCRETO ARMADO 3.00 x 2.00 CUERPO CENTRAL - CABEZALES ARMADURA

ESCALA: 1 / 400
FECHA: ENERO 2011
LAMINA: MC-02