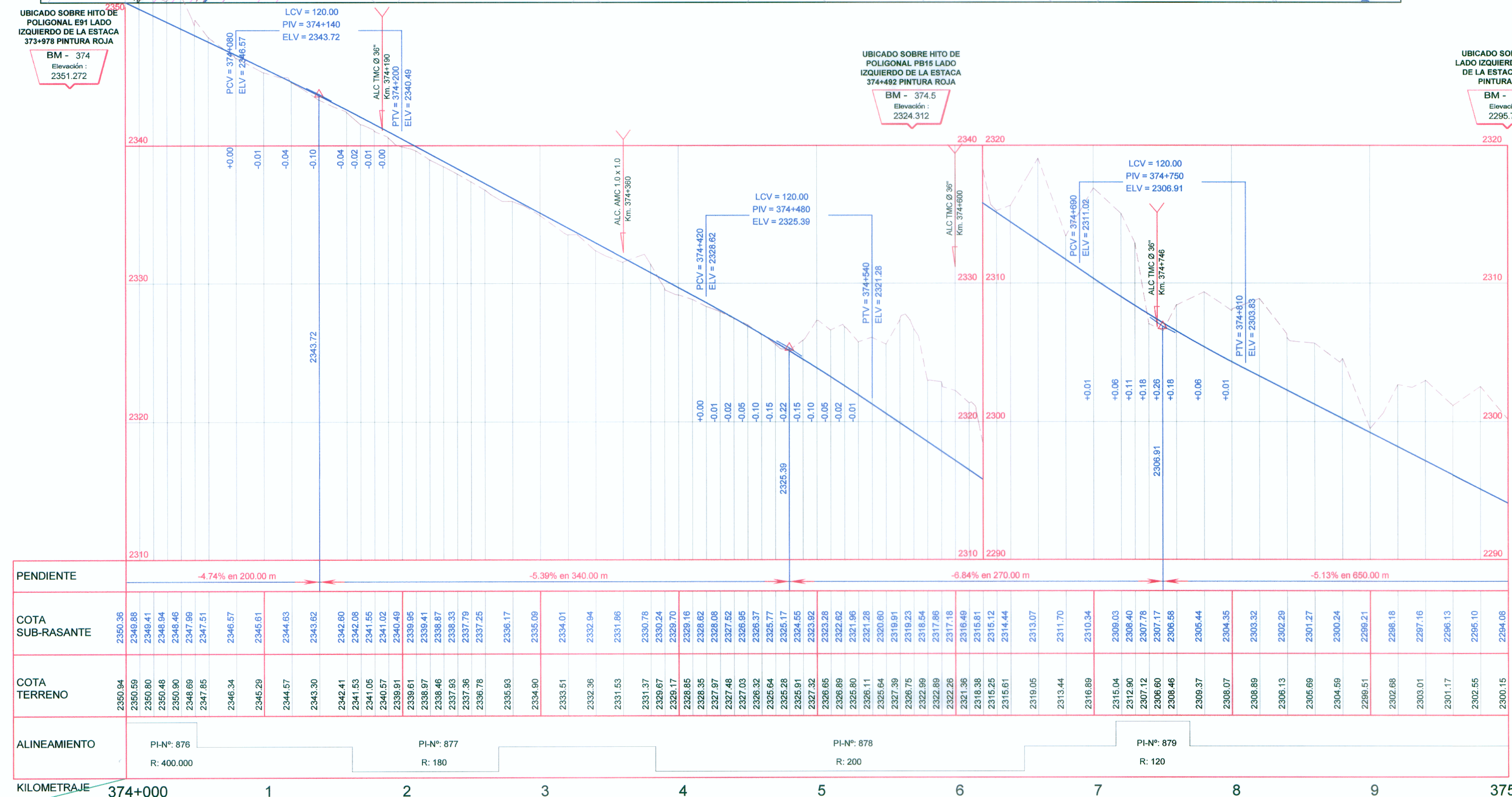


CUADRO DE COORDENADAS Y ELEMENTOS DE CURVAS

Nº PI	SENT.	DELTA	RADIO	TANG.	L.C.	Ext.	P.I.	P.C.	P.T.	NORTE	ESTE	P%	SA
876	I	8°12'30"	400.000	28.702	57.305	1.028	374 + 022.410	373 + 993.709	374 + 051.014	8487312.100	720274.600	2.5	0.30
877	D	33°44'39"	180.000	54.592	106.010	8.097	374 + 217.942	374 + 163.349	374 + 269.360	8487346.940	720467.102	3.0	0.60
878	D	78°21'41"	200.000	157.275	266.552	54.432	374 + 540.304	374 + 383.029	374 + 649.580	8487217.209	720765.672	3.0	0.50
879	I	29°30'31"	120.000	27.163	53.425	3.036	374 + 742.847	374 + 715.685	374 + 769.110	8486970.357	720722.826	4.0	0.80

PLANTA  
Esc. 1/4000



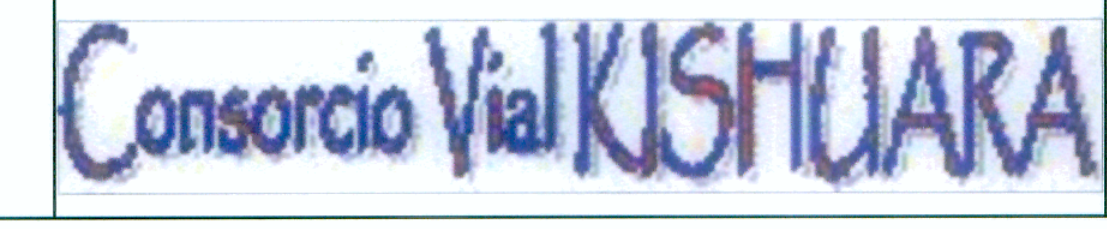
PERFIL LONGITUDINAL  
Esc. Hor. : 1/4000  
Esc. Ver. : 1/400

LEYENDA

SIMBOLO	DESCRIPCION
PI-161	Pis
(Blue line)	Eje de Diseño
(Square)	BMS
(Cross-hatch)	BADEN
(Dashed line)	ALCANTARILLA
(Trapezoid)	PUNTES Y PONTONES
(Circle with Z)	BUZON
(Circle with PL)	POSTE DE LUZ
(Circle with PAT)	POSTE DE ALTA TENSION
(Brick pattern)	MURO TAPIAL DE ADOBE
(Blue square)	MURO DE CONCRETO
(Blue rectangle)	VIVIENDAS
(Dashed line)	BORDE DE CARRETERA
(Blue line)	CANAL EXISTENTE
(Blue wavy line)	QUEBRADA, RIO

KILOMETRAJE 374+000 1 2 3 4 5 6 7 8 9 375+000

ALINEAMIENTO	PI-Nº: 876 R: 400.000	PI-Nº: 877 R: 180	PI-Nº: 878 R: 200	PI-Nº: 879 R: 120
PENDIENTE	4.74% en 200.00 m		-5.39% en 340.00 m	
			-6.84% en 270.00 m	
			-5.13% en 650.00 m	
COTA SUB-RASANTE	2350.36	2346.88	2346.41	2346.94
COTA TERRENO	2350.94	2346.59	2346.80	2346.48
	2347.85	2346.34	2346.29	2344.57
	2346.67	2346.61	2344.63	2343.30
	2343.72	2342.80	2342.08	2341.05
	2340.57	2341.55	2341.02	2338.91
	2340.49	2338.95	2338.41	2338.97
	2337.79	2337.79	2337.79	2337.79
	2337.25	2336.78	2335.93	2334.60
	2335.17	2334.09	2333.01	2332.84
	2331.86	2331.37	2330.78	2328.17
	2329.70	2328.85	2328.16	2326.35
	2325.08	2322.97	2322.48	2322.03
	2322.95	2322.03	2320.32	2320.64
	2320.37	2320.26	2320.91	2320.55
	2320.15	2320.55	2320.32	2320.65
	2320.05	2320.89	2322.02	2325.60
	2321.96	2326.11	2321.28	2325.64
	2319.91	2327.39	2319.91	2326.75
	2318.54	2322.89	2318.54	2322.89
	2317.18	2322.26	2317.18	2321.36
	2316.49	2321.36	2316.49	2316.38
	2315.12	2315.25	2315.12	2315.25
	2314.44	2315.61	2314.44	2315.61
	2313.07	2319.05	2313.07	2313.44
	2311.70	2316.89	2310.34	2316.04
	2309.03	2312.90	2308.40	2307.12
	2307.78	2306.60	2307.17	2306.46
	2306.68	2306.46	2306.68	2306.37
	2305.44	2306.07	2304.35	2306.07
	2303.32	2308.89	2302.29	2308.89
	2302.29	2306.13	2301.27	2306.69
	2301.27	2304.59	2300.24	2304.59
	2299.21	2298.51	2298.18	2298.51
	2298.18	2302.68	2297.16	2302.68
	2297.16	2303.01	2296.13	2303.01
	2296.13	2301.17	2295.10	2301.17
	2295.10	2300.55	2294.08	2300.55
	2294.08	2300.15	2294.08	2300.15



Diseño: A. CABRERA N.  
Dibujo: V. YSUYHUAYLAS  
Verifico:  
Presento:

Aprobó:

REVISIONES

Nº	FECHA

ESTUDIO DEFINITIVO PARA LA REHABILITACION Y MEJORAMIENTO DE LA CARRETERA AYACUCHO-ABANCAY  
TRAMO : DV.KISHUARA - PTE. SAHUNTO

PLANO:  
PLANTA Y PERFIL LONGITUDINAL  
Km 374+000 - Km 375+000

ESCALA: INDICADA  
FECHA: ENERO 2011  
LAMINA: PP-66

