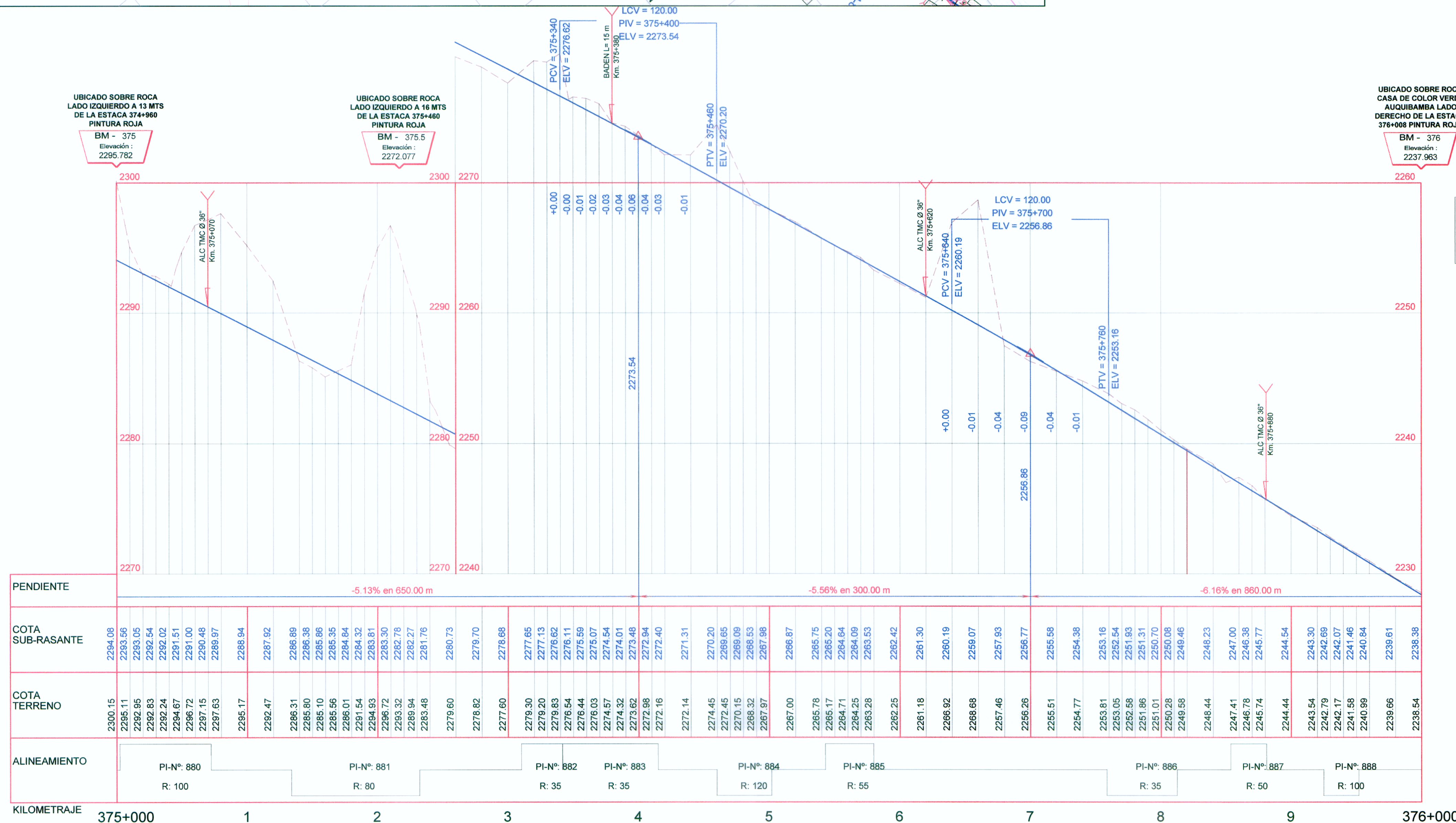


CUADRO DE COORDENADAS Y ELEMENTOS DE CURVAS

Nº PI	SENT.	DELTA	RADIO	TANG.	L.C.	Ext.	P.I.	P.C.	P.T.	NORTE	ESTE	P%	SA
880	I	40°02'08"	100.000	36.432	69.875	6.430	375 + 038.654	375 + 002.221	375 + 072.097	8486684.667	720802.925	5.0	0.90
881	D	70°20'20"	80.000	56.370	98.212	17.865	375 + 190.121	375 + 133.751	375 + 231.963	8486597.621	720930.517	6.0	1.10
882	I	51°23'13"	35.000	16.839	31.390	3.840	375 + 326.937	375 + 310.098	375 + 341.580	8486451.191	720892.261	8.0	2.10
883	I	119°48'30"	35.000	60.388	73.187	34.798	375 + 401.969	375 + 341.580	375 + 414.767	8486389.235	720938.518	8.0	2.10
884	D	19°59'57"	120.000	21.158	41.886	1.851	375 + 480.879	375 + 459.721	375 + 501.607	8486505.290	720988.852	4.0	0.80
885	I	38°30'20"	55.000	19.210	36.963	3.258	375 + 561.993	375 + 542.783	375 + 579.746	8486564.493	721044.928	7.0	1.40
886	D	88°13'28"	35.000	33.932	53.893	13.748	375 + 792.274	375 + 758.342	375 + 812.236	8486795.370	721064.887	8.0	2.10
887	I	31°26'44"	50.000	14.076	27.441	1.944	375 + 867.631	375 + 853.555	375 + 880.997	8486790.438	721154.078	7.0	1.50
888	D	15°22'31"	100.000	13.499	26.835	0.907	375 + 938.485	375 + 924.986	375 + 951.821	8486824.344	721217.100	5.0	0.90

PLANTA Esc. 1/4000



PERFIL LONGITUDINAL Esc. Hor. : 1/4000 Esc. Ver. : 1/400

LEYENDA

SÍMBOLO	DESCRIPCIÓN
PI-161	Pis
Eje de Diseño	Eje de Diseño
BMS	BMS
BADEN	BADEN
ALCANTARILLA	ALCANTARILLA
PUENTES Y PONTONES	PUENTES Y PONTONES
BUZON	BUZON
PL	POSTE DE LUZ
PAT	POSTE DE ALTA TENSION
MURO TAPIAL DE ADOBE	MURO TAPIAL DE ADOBE
MURO DE CONCRETO	MURO DE CONCRETO
VIVIENDAS	VIVIENDAS
BORDE DE CARRETERA	BORDE DE CARRETERA
CANAL EXISTENTE	CANAL EXISTENTE
QUEBRADA, RIO	QUEBRADA, RIO

PENDIENTE	COTA SUB-RASANTE	COTA TERRENO	ALINEAMIENTO	KILOMETRAJE
-5.13% en 650.00 m	2294.08	2300.15	PI-Nº: 880	375+000
	2293.96	2295.11		1
	2293.05	2292.85		
	2292.54	2292.83		
	2292.02	2292.24		
	2291.51	2291.67		
	2291.00	2290.72		
	2290.48	2290.15		
	2289.97	2289.63		
	2289.44	2289.17		
	2288.92	2288.47		
	2288.39	2287.94		
	2287.86	2287.41		
	2287.33	2286.88		
	2286.80	2286.35		
	2286.31	2285.86		
	2285.82	2285.37		
	2285.38	2284.93		
	2284.84	2284.39		
	2284.30	2283.85		
	2283.81	2283.36		
	2283.32	2282.87		
	2282.78	2282.33		
	2282.27	2281.78		
	2281.76	2281.21		
	2281.20	2280.65		
	2280.73	2280.18		
	2279.70	2279.15		
	2278.68	2278.13		
	2277.65	2277.10		
	2276.62	2276.07		
	2275.59	2275.04		
	2274.56	2274.01		
	2273.54	2272.99		
	2272.51	2271.96		
	2271.48	2270.93		
	2270.45	2269.90		
	2269.42	2268.87		
	2268.88	2268.33		
	2268.34	2267.79		
	2268.30	2267.75		
	2268.26	2267.71		
	2268.22	2267.67		
	2268.18	2267.63		
	2268.14	2267.59		
	2268.10	2267.55		
	2268.06	2267.51		
	2268.02	2267.47		
	2267.98	2267.43		
	2267.94	2267.39		
	2267.90	2267.35		
	2267.86	2267.31		
	2267.82	2267.27		
	2267.78	2267.23		
	2267.74	2267.19		
	2267.70	2267.15		
	2267.66	2267.11		
	2267.62	2267.07		
	2267.58	2267.03		
	2267.54	2266.99		
	2267.50	2266.95		
	2267.46	2266.91		
	2267.42	2266.87		
	2267.38	2266.83		
	2267.34	2266.79		
	2267.30	2266.75		
	2267.26	2266.71		
	2267.22	2266.67		
	2267.18	2266.63		
	2267.14	2266.59		
	2267.10	2266.55		
	2267.06	2266.51		
	2267.02	2266.47		
	2266.98	2266.43		
	2266.94	2266.39		
	2266.90	2266.35		
	2266.86	2266.31		
	2266.82	2266.27		
	2266.78	2266.23		
	2266.74	2266.19		
	2266.70	2266.15		
	2266.66	2266.11		
	2266.62	2266.07		
	2266.58	2266.03		
	2266.54	2265.99		
	2266.50	2265.95		
	2266.46	2265.91		
	2266.42	2265.87		
	2266.38	2265.83		
	2266.34	2265.79		
	2266.30	2265.75		
	2266.26	2265.71		
	2266.22	2265.67		
	2266.18	2265.63		
	2266.14	2265.59		
	2266.10	2265.55		
	2266.06	2265.51		
	2266.02	2265.47		
	2265.98	2265.43		
	2265.94	2265.39		
	2265.90	2265.35		
	2265.86	2265.31		
	2265.82	2265.27		
	2265.78	2265.23		
	2265.74	2265.19		
	2265.70	2265.15		
	2265.66	2265.11		
	2265.62	2265.07		
	2265.58	2265.03		
	2265.54	2264.99		
	2265.50	2264.95		
	2265.46	2264.91		
	2265.42	2264.87		
	2265.38	2264.83		
	2265.34	2264.79		
	2265.30	2264.75		
	2265.26	2264.71		
	2265.22	2264.67		
	2265.18	2264.63		
	2265.14	2264.59		
	2265.10	2264.55		
	2265.06	2264.51		
	2265.02	2264.47		
	2264.98	2264.43		
	2264.94	2264.39		
	2264.90	2264.35		
	2264.86	2264.31		
	2264.82	2264.27		
	2264.78	2264.23		
	2264.74	2264.19		
	2264.70	2264.15		
	2264.66	2264.11		
	2264.62	2264.07		
	2264.58	2264.03		
	2264.54	2263.99		
	2264.50	2263.95		
	2264.46	2263.91		
	2264.42	2263.87		
	2264.38	2263.83		
	2264.34	2263.79		
	2264.30	2263.75		
	2264.26	2263.71		
	2264.22	2263.67		
	2264.18	2263.63		
	2264.14	2263.59		
	2264.10	2263.55		
	2264.06	2263.51		
	2264.02	2263.47		
	2263.98	2263.43		
	2263.94	2263.39		
	2263.90	2263.35		
	2263.86	2263.31		
	2263.82	2263.27		
	2263.78	2263.23		
	2263.74	2263.19		
	2263.70	2263.15		
	2263.66	2263.11		
	2263.62	2263.07		
	2263.58	2263.03		
	2263.54	2262.99		
	2263.50	2262.95		
	2263.46	2262.91		
	2263.42	2262.87		
	2263.38	2262.83		
	2263.34	2262.79		
	2263.30	2262.75		
	2263.26	2262.71		
	2263.22	2262.67		
	2263.18	2262.63		
	2263.14	2262.59		
	2263.10	2262.55		
	2263.06	2262.51		
	2263.02	2262.47		
	2262.98	2262.43		
	2262.94	2262.39		
	2262.90	2262.35		
	2262.86	2262.31		
	2262.82	2262.27		
	2262.78	2262.23		
	2262.74	2262.19		
	2262.70	2262.15		
	2262.66	2262.11		
	2262.62	2262.07		
	2262.58	2262.03		
	2262.54	2261.99		
	2262.50	2261.95		
	2262.46	2261.91		
	2262.42	2261.87		
	2262.38	2261.83		
	2262.34	2261.79		
	2262.30	2261.75		
	2262.26	2261.71		
	2262.22	2261.67		
	2262.18	2261.63		
	2262.14	2261.59		
	2262.10	2261.55		
	2262.06	2261.51		
	2262.02	2261.47		
	2261.98	2261.43		
	2261.94	2261.39		