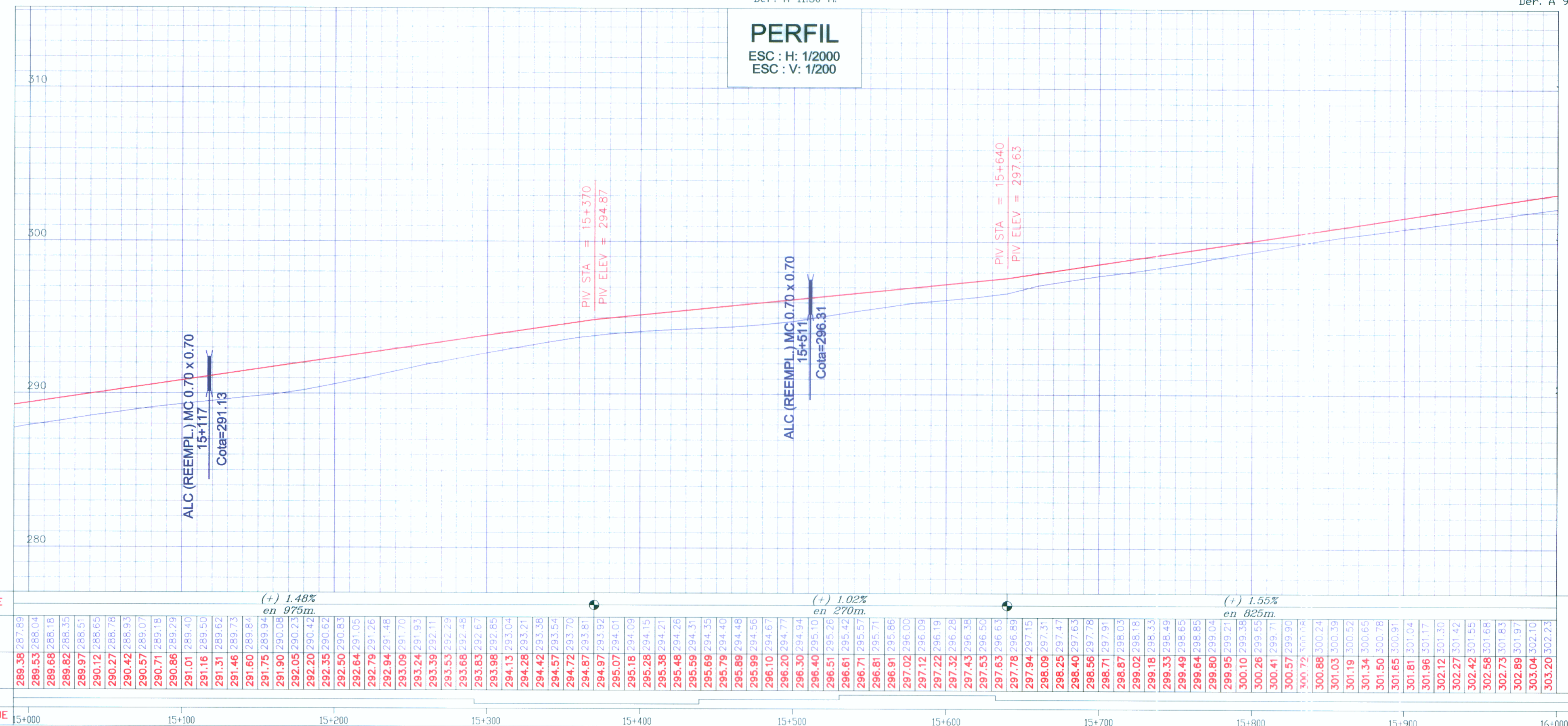


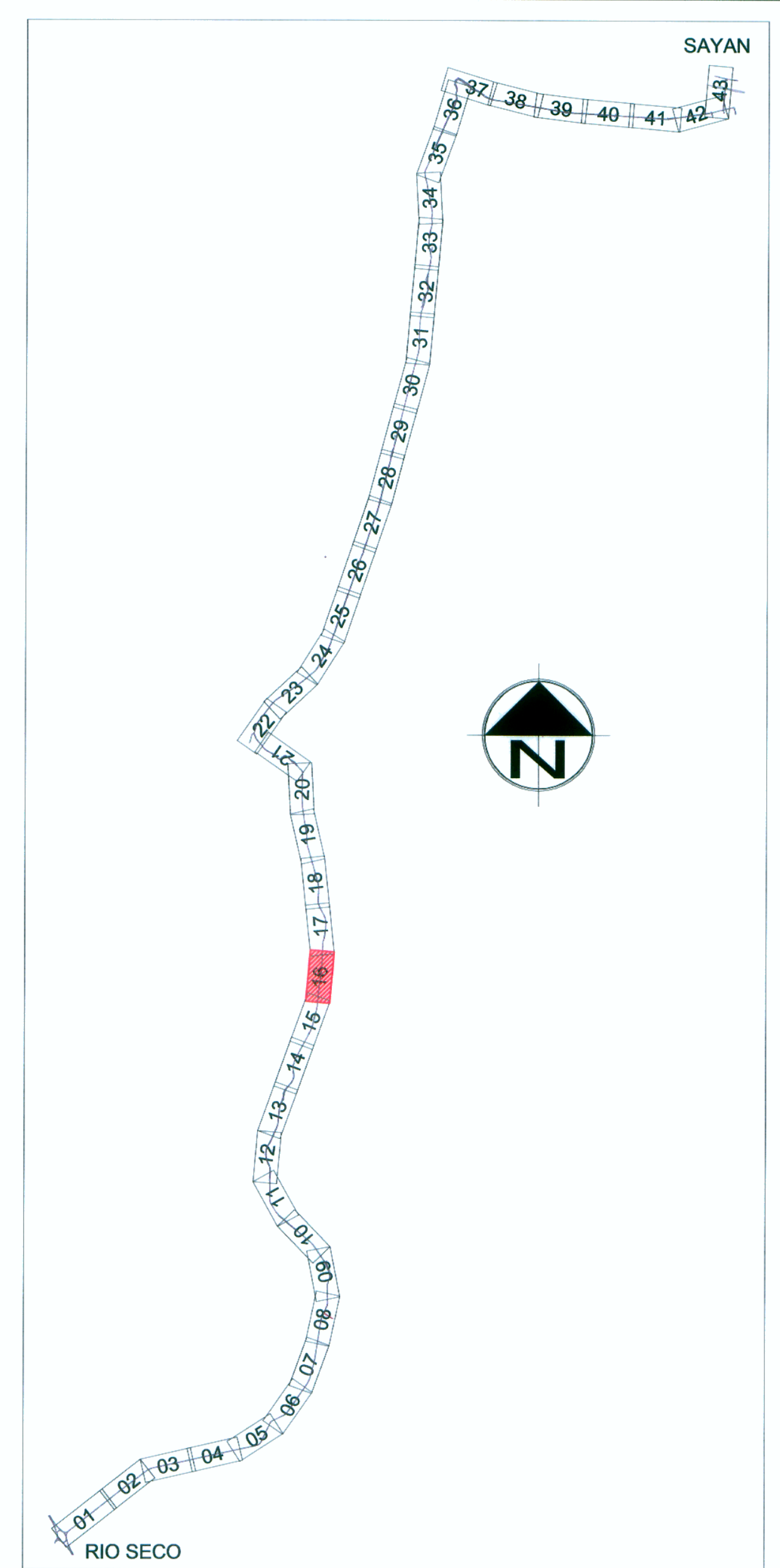
BM-15
281.86
15+033
Izq. A 10.00 m.

BM-15.5
289.426
15+510
Der. A 11.50 m.

BM-16
302.398
15+960
Der. A 9.00 m.



PENDIENTE	(+/-) 1.48% en 975m		(+/-) 1.02% en 270m		(+/-) 1.55% en 825m	
	COTAS TERRENO	COTAS RASANTE	SENTIDO	KILOMETRAJE	COTAS TERRENO	COTAS RASANTE
	289.38	287.86		15+000	289.38	287.86
	289.53	288.04		15+100	289.53	288.04
	289.68	288.16		15+200	289.68	288.16
	289.82	288.35		15+300	289.82	288.35
	289.97	288.51		15+400	289.97	288.51
	290.12	288.65		15+500	290.12	288.65
	290.27	288.78		15+600	290.27	288.78
	290.42	288.93		15+700	290.42	288.93
	290.57	289.07		15+800	290.57	289.07
	290.71	289.18		15+900	290.71	289.18
	290.86	289.29		16+000	290.86	289.29
	291.01	289.40			291.01	289.40
	291.16	289.50			291.16	289.50
	291.31	289.62			291.31	289.62
	291.46	289.73			291.46	289.73
	291.60	289.84			291.60	289.84
	291.75	289.94			291.75	289.94
	291.90	290.08			291.90	290.08
	292.05	290.23			292.05	290.23
	292.20	290.37			292.20	290.37
	292.35	290.52			292.35	290.52
	292.50	290.65			292.50	290.65
	292.64	290.79			292.64	290.79
	292.79	290.92			292.79	290.92
	292.94	291.04			292.94	291.04
	293.09	291.17			293.09	291.17
	293.24	291.30			293.24	291.30
	293.39	291.42			293.39	291.42
	293.53	291.54			293.53	291.54
	293.68	291.66			293.68	291.66
	293.83	291.77			293.83	291.77
	293.98	291.88			293.98	291.88
	294.13	291.99			294.13	291.99
	294.28	292.10			294.28	292.10
	294.42	292.21			294.42	292.21
	294.57	292.32			294.57	292.32
	294.72	292.43			294.72	292.43
	294.87	292.53			294.87	292.53
	294.97	292.62			294.97	292.62
	295.11	292.71			295.11	292.71
	295.26	292.80			295.26	292.80
	295.41	292.89			295.41	292.89
	295.56	292.98			295.56	292.98
	295.71	293.07			295.71	293.07
	295.86	293.16			295.86	293.16
	296.01	293.25			296.01	293.25
	296.16	293.34			296.16	293.34
	296.31	293.43			296.31	293.43
	296.46	293.52			296.46	293.52
	296.61	293.61			296.61	293.61
	296.76	293.70			296.76	293.70
	296.91	293.79			296.91	293.79
	297.06	293.88			297.06	293.88
	297.21	293.97			297.21	293.97
	297.36	294.06			297.36	294.06
	297.51	294.15			297.51	294.15
	297.66	294.24			297.66	294.24
	297.81	294.33			297.81	294.33
	297.96	294.42			297.96	294.42
	298.11	294.51			298.11	294.51
	298.26	294.60			298.26	294.60
	298.41	294.69			298.41	294.69
	298.56	294.78			298.56	294.78
	298.71	294.87			298.71	294.87
	298.86	294.96			298.86	294.96
	299.01	295.05			299.01	295.05
	299.16	295.14			299.16	295.14
	299.31	295.23			299.31	295.23
	299.46	295.32			299.46	295.32
	299.61	295.41			299.61	295.41
	299.76	295.50			299.76	295.50
	299.91	295.59			299.91	295.59
	300.06	295.68			300.06	295.68
	300.21	295.77			300.21	295.77
	300.36	295.86			300.36	295.86
	300.51	295.95			300.51	295.95
	300.66	296.04			300.66	296.04
	300.81	296.13			300.81	296.13
	300.96	296.22			300.96	296.22
	301.11	296.31			301.11	296.31
	301.26	296.40			301.26	296.40
	301.41	296.49			301.41	296.49
	301.56	296.58			301.56	296.58
	301.71	296.67			301.71	296.67
	301.86	296.76			301.86	296.76
	302.01	296.85			302.01	296.85
	302.16	296.94			302.16	296.94
	302.31	297.03			302.31	297.03
	302.46	297.12			302.46	297.12
	302.61	297.21			302.61	297.21
	302.76	297.30			302.76	297.30
	302.91	297.39			302.91	297.39
	303.06	297.48			303.06	297.48
	303.21	297.57			303.21	297.57



LEYENDA

VÍA PAVIMENTADA	CANAL DE TIERRA	=====
DERECHO DE VIA	VIVIENDA	
EJE	POSTE DE LUZ	⊕
CANAL DE CONCRETO	POSTE DE TELÉFONO	⊙
RASANTE DE PERFIL	POSTE DE MEDIA TENSIÓN	⊕
TERRENO DE PERFIL	PUENTE	

FORMATO

FORMATO	ESCALA GRÁFICA						
	1:200	0	2.00	4.00	6.00	8.00	10.00 m
A-1	1:2000	0	20.00	40.00	60.00	80.00	100.00 m
A-3	1:400	0	4.00	8.00	12.00	16.00	20.00 m
	1:4000	0	40.00	80.00	120.00	160.00	200.00 m

ESTUDIO DEFINITIVO DEL PROYECTO REHABILITACION Y MEJORAMIENTO DE LA CARRETERA RIO SECO
EL HORCADO - SAYAN
Ing. Hilario Huerta Olvera
ESP EN TRAZO Y DISEÑO VIAL
C.I.P. 43292

ESTUDIO DEFINITIVO DEL PROYECTO REHABILITACION Y MEJORAMIENTO DE LA CARRETERA RIO SECO
EL HORCADO - SAYAN
Ing. Hilario Huerta Olvera
ESP EN TRAZO Y DISEÑO VIAL
C.I.P. 43292