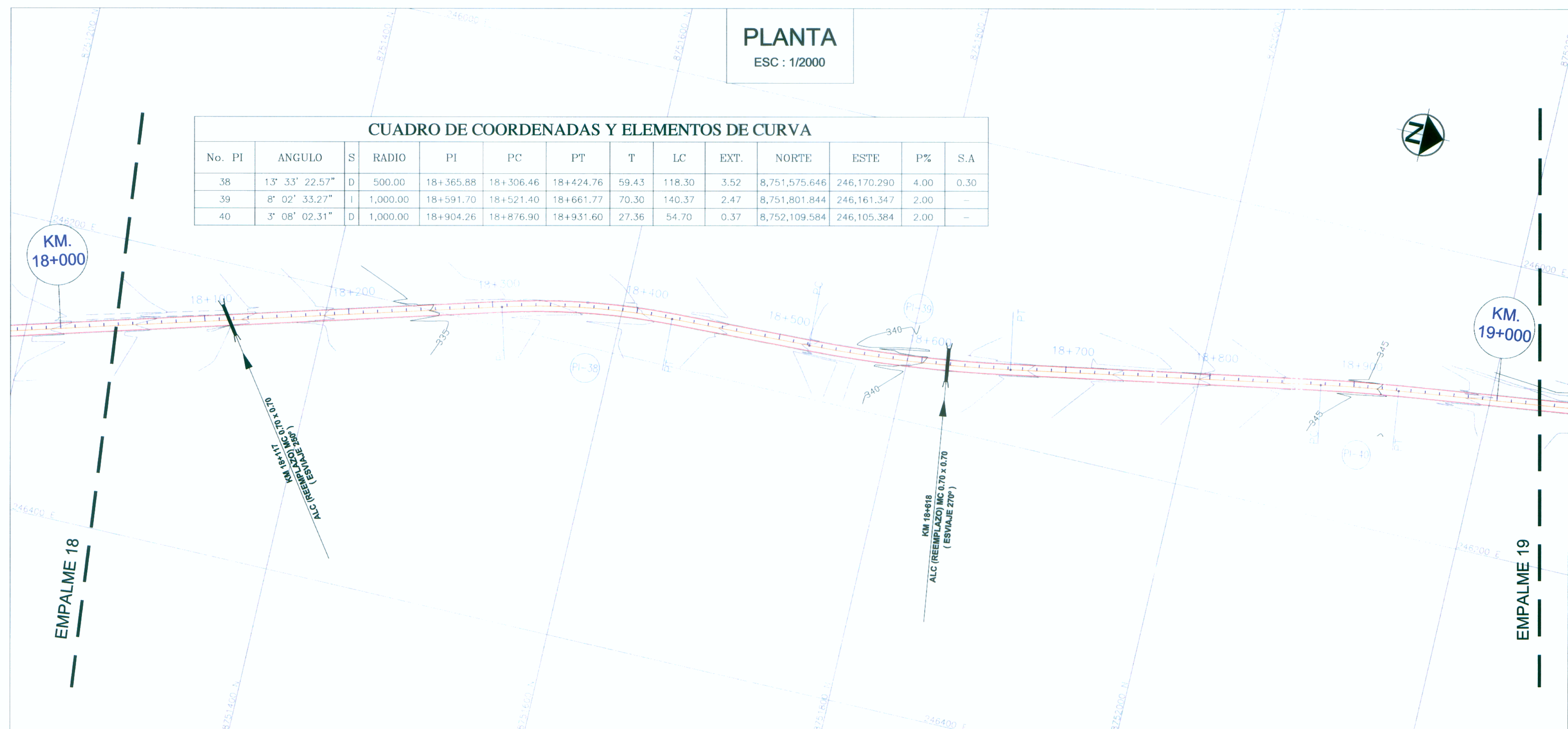


**PLANTA**  
ESC : 1/2000

**CUADRO DE COORDENADAS Y ELEMENTOS DE CURVA**

No. PI	ANGULO	S	RADIO	PI	PC	PT	T	LC	EXT.	NORTE	ESTE	P%	S.A
38	13° 33' 22.57"	D	500.00	18+365.88	18+306.46	18+424.76	59.43	118.30	3.52	8,751,575.646	246,170.290	4.00	0.30
39	8° 02' 33.27"	I	1,000.00	18+591.70	18+521.40	18+661.77	70.30	140.37	2.47	8,751,801.844	246,161.347	2.00	-
40	3° 08' 02.31"	D	1,000.00	18+904.26	18+876.90	18+931.60	27.36	54.70	0.37	8,752,109.584	246,105.384	2.00	-

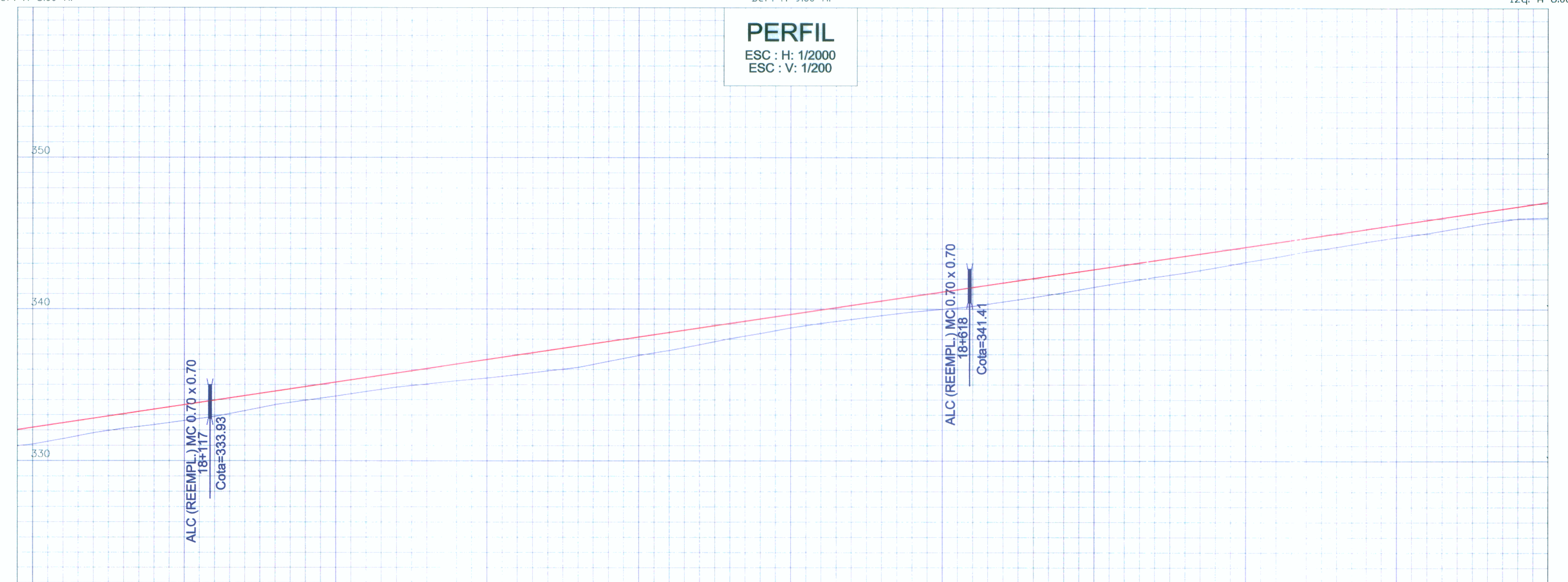


BM-18  
326.788  
18+002  
Der. A 6.00 m.

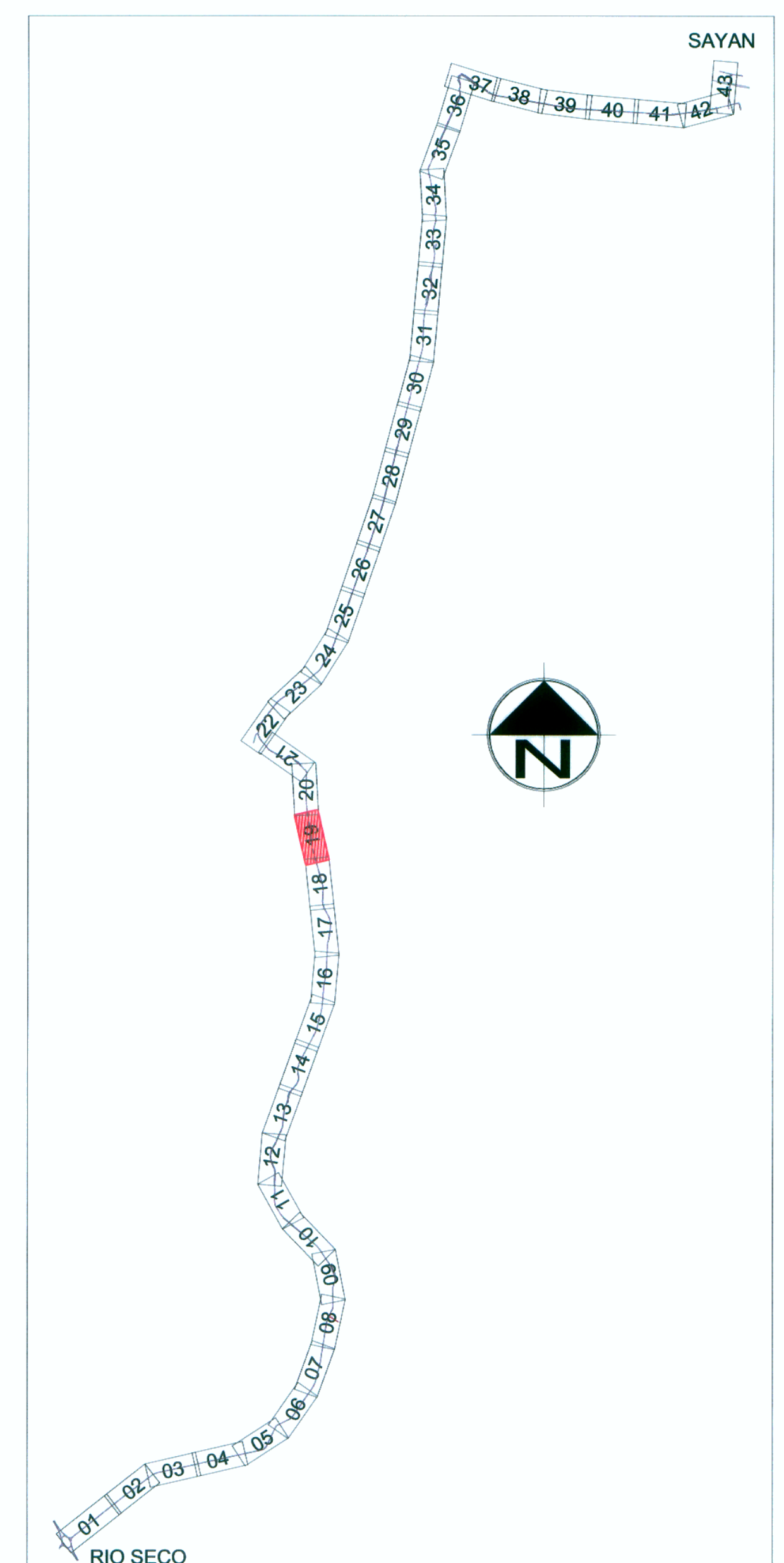
BM-18.5  
334.186  
18+491  
Der. A 9.00 m.

BM-19  
346.300  
18+981  
Izq. A 8.00 m.

**PERFIL**  
ESC : H: 1/2000  
ESC : V: 1/200



PENDIENTE	(*) 1.40% en 1810m													
	COTAS TERRENO	COTAS RASANTE	SENTIDO	KILOMETRAJE										
	332.18	331.07		18+000	18+100	18+200	18+300	18+400	18+500	18+600	18+700	18+800	18+900	19+000
	332.33	331.25												
	332.48	331.42												
	332.63	331.62												
	332.78	331.82												
	332.93	332.07												
	333.08	332.31												
	333.23	332.55												
	333.38	332.79												
	333.52	332.99												
	333.67	333.22												
	333.82	333.46												
	333.97	333.69												
	334.12	333.93												
	334.27	334.17												
	334.42	334.41												
	334.57	334.67												
	334.72	334.82												
	334.87	334.96												
	335.02	335.10												
	335.17	335.24												
	335.32	335.39												
	335.47	335.54												
	335.61	335.68												
	335.76	335.83												
	335.91	335.94												
	336.06	336.05												
	336.21	336.15												
	336.36	336.26												
	336.51	336.34												
	336.66	336.53												
	336.81	336.55												
	336.96	336.66												
	337.11	336.78												
	337.26	336.91												
	337.41	337.02												
	337.56	337.14												
	337.70	337.24												
	337.85	337.33												
	338.00	337.43												
	338.15	337.52												
	338.30	337.59												
	338.45	337.75												
	338.60	337.84												
	338.75	337.93												
	338.90	338.04												
	339.05	338.14												
	339.20	338.21												
	339.35	338.28												
	339.50	338.35												
	339.65	338.42												
	339.79	338.50												
	339.94	338.57												
	340.09	338.64												
	340.24	338.71												
	340.39	338.78												
	340.54	338.85												
	340.69	338.92												
	340.84	339.01												
	340.99	339.09												
	341.14	339.18												
	341.29	340.09												
	341.44	340.19												
	341.59	340.33												
	341.74	340.48												
	341.89	340.62												
	342.03	340.77												
	342.18	340.93												
	342.33	341.10												
	342.48	341.28												
	342.63	341.46												
	342.78	341.63												
	342.93	341.80												
	343.08	341.96												
	343.23	342.12												
	343.38	342.27												
	343.53	342.41												
	343.68	342.58												
	343.83	342.75												
	343.97	342.94												
	344.12	343.12												
	344.27	343.29												
	344.42	343.46												
	344.57	343.65												
	344.72	343.83												
	344.87	344.01												
	345.02	344.13												
	345.17	344.30												
	345.32	344.48												
	345.47	344.67												
	345.62	344.87												
	345.77	345.07												
	345.92	345.24												
	346.06	345.41												
	346.21	345.58												
	346.36	345.76												
	346.51	345.94												
	346.66	346.12												
	346.81	346.30												
	346.96	346.48												
	347.11	346.66												



**LEYENDA**

VÍA PAVIMENTADA	CANAL DE TIERRA	
DERECHO DE VIA	VIVIENDA	
EJE	POSTE DE LUZ	
CANAL DE CONCRETO	POSTE DE TELÉFONO	
RASANTE DE PERFIL	POSTE DE MEDIA TENSIÓN	
TERRENO DE PERFIL	PUENTE	

**FORMATO**

FORMATO	ESCALA GRÁFICA					
	1:200	2.00	4.00	6.00	8.00	10.00 m
A-1	1:2000	20.00	40.00	60.00	80.00	100.00 m
A-3	1:400	4.00	8.00	12.00	16.00	20.00 m
	1:4000	40.00	80.00	120.00	160.00	200.00 m

ESTUDIO DEFINITIVO DEL PROYECTO REHABILITACIÓN Y MEJORAMIENTO DE LA CARRETERA RÍO SECO - EL AHORCADO - SAYÁN  
 Ing. Hilario Huerta Olivera  
 C.I.P. 43202