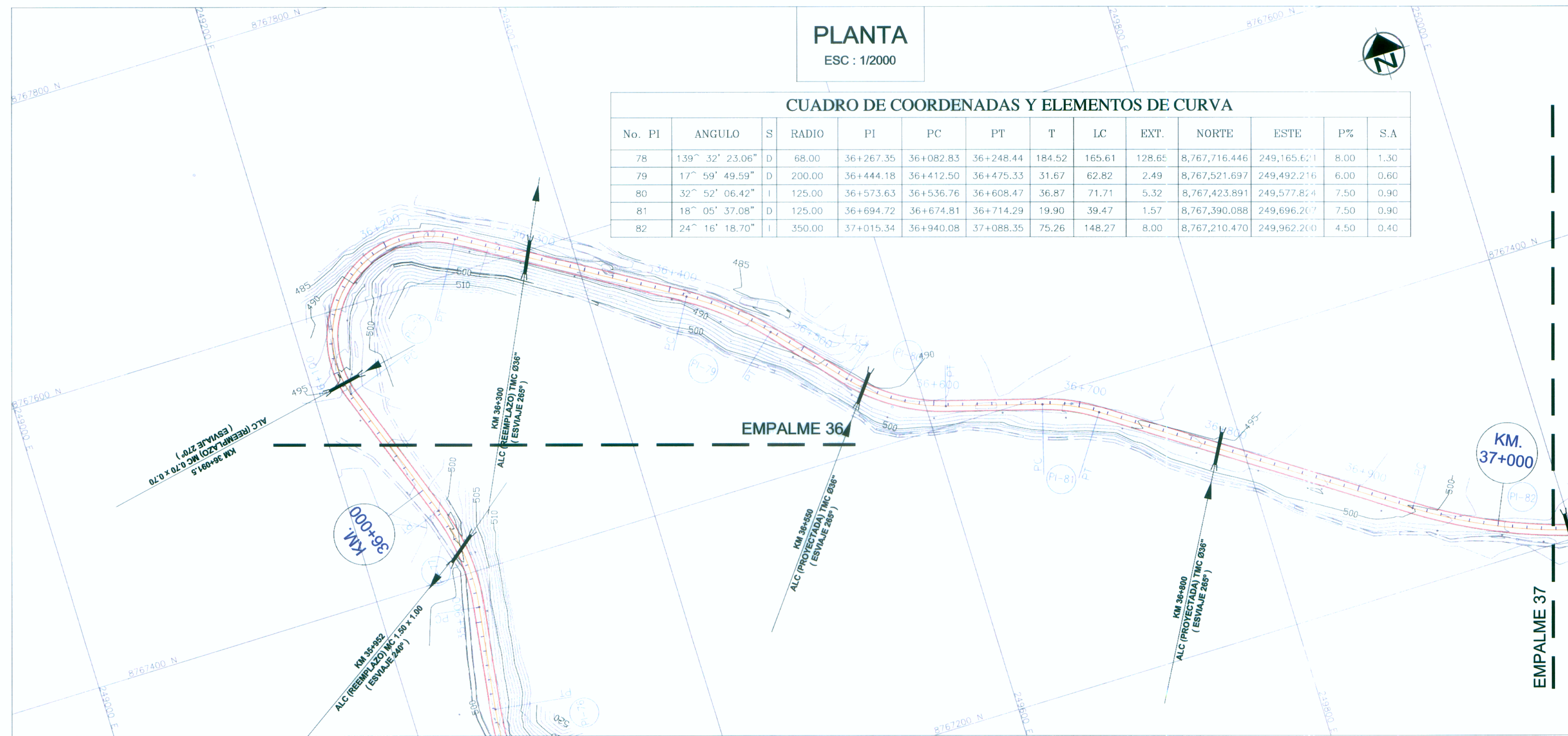


PLANTA
ESC : 1/2000

CUADRO DE COORDENADAS Y ELEMENTOS DE CURVA

No. PI	ANGULO	S	RADIO	PI	PC	PT	T	LC	EXT.	NORTE	ESTE	P%	S.A
78	139° 32' 23.06"	D	68.00	36+267.35	36+082.83	36+248.44	184.52	165.61	128.65	8,767,716.446	249,165.621	8.00	1.30
79	17° 59' 49.59"	D	200.00	36+444.18	36+412.50	36+475.33	31.67	62.82	2.49	8,767,521.697	249,492.216	6.00	0.60
80	32° 52' 06.42"	I	125.00	36+573.63	36+536.76	36+608.47	36.87	71.71	5.32	8,767,423.891	249,577.824	7.50	0.90
81	18° 05' 37.08"	D	125.00	36+694.72	36+674.81	36+714.29	19.90	39.47	1.57	8,767,390.088	249,696.207	7.50	0.90
82	24° 16' 18.70"	I	350.00	37+015.34	36+940.08	37+088.35	75.26	148.27	8.00	8,767,210.470	249,962.200	4.50	0.40

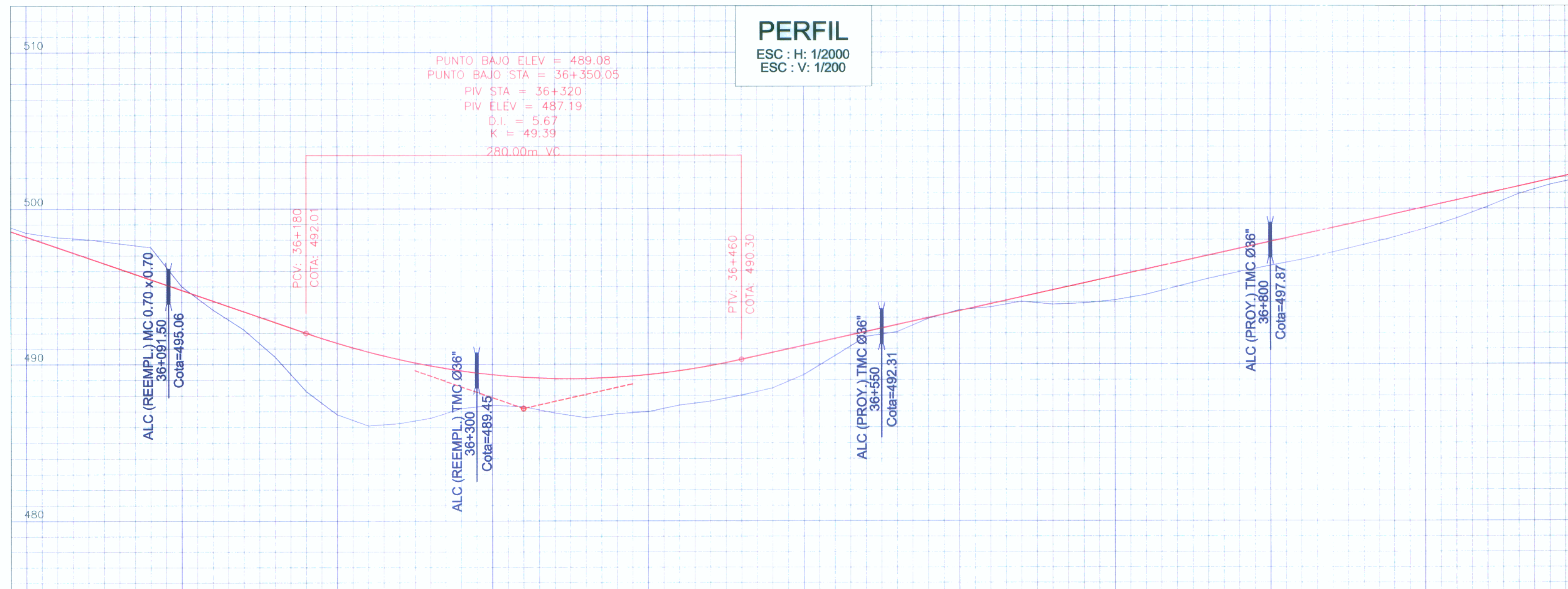


BM-36
499,762
35+984
Der. A 8.00 m.

BM-36.5
489,26
36+460
Der. A 8.00 m.

BM-37
502,223
36+974
Der. A 8.00 m.

PERFIL
ESC : H: 1/2000
ESC : V: 1/200



PENDIENTE	(-) 3.44% en 465m		(+) 2.23% en 705m	
	COTAS TERRENO	COTAS RASANTE	COTAS TERRENO	COTAS RASANTE
498.21	498.46	498.21	498.46	498.21
497.86	498.31	497.86	498.31	497.86
497.52	498.16	497.52	498.16	497.52
497.17	498.01	497.17	498.01	497.17
496.83	497.86	496.83	497.86	496.83
496.49	497.71	496.49	497.71	496.49
496.14	497.56	496.14	497.56	496.14
495.80	497.41	495.80	497.41	495.80
495.45	497.26	495.45	497.26	495.45
495.11	497.11	495.11	497.11	495.11
494.76	496.96	494.76	496.96	494.76
494.42	496.81	494.42	496.81	494.42
494.08	496.66	494.08	496.66	494.08
493.73	496.51	493.73	496.51	493.73
493.39	496.36	493.39	496.36	493.39
493.04	496.21	493.04	496.21	493.04
492.70	496.06	492.70	496.06	492.70
492.35	495.91	492.35	495.91	492.35
492.01	495.76	492.01	495.76	492.01
491.66	495.61	491.66	495.61	491.66
491.32	495.46	491.32	495.46	491.32
490.97	495.31	490.97	495.31	490.97
490.63	495.16	490.63	495.16	490.63
490.28	495.01	490.28	495.01	490.28
489.94	494.86	489.94	494.86	489.94
489.59	494.71	489.59	494.71	489.59
489.25	494.56	489.25	494.56	489.25
488.90	494.41	488.90	494.41	488.90
488.56	494.26	488.56	494.26	488.56
488.21	494.11	488.21	494.11	488.21
487.87	493.96	487.87	493.96	487.87
487.52	493.81	487.52	493.81	487.52
487.18	493.66	487.18	493.66	487.18
486.83	493.51	486.83	493.51	486.83
486.49	493.36	486.49	493.36	486.49
486.14	493.21	486.14	493.21	486.14
485.80	493.06	485.80	493.06	485.80
485.45	492.91	485.45	492.91	485.45
485.11	492.76	485.11	492.76	485.11
484.76	492.61	484.76	492.61	484.76
484.42	492.46	484.42	492.46	484.42
484.08	492.31	484.08	492.31	484.08
483.73	492.16	483.73	492.16	483.73
483.39	492.01	483.39	492.01	483.39
483.04	491.86	483.04	491.86	483.04
482.70	491.71	482.70	491.71	482.70
482.35	491.56	482.35	491.56	482.35
482.01	491.41	482.01	491.41	482.01
481.66	491.26	481.66	491.26	481.66
481.32	491.11	481.32	491.11	481.32
480.97	490.96	480.97	490.96	480.97
480.63	490.81	480.63	490.81	480.63
480.28	490.66	480.28	490.66	480.28
479.94	490.51	479.94	490.51	479.94
479.59	490.36	479.59	490.36	479.59
479.25	490.21	479.25	490.21	479.25
478.90	490.06	478.90	490.06	478.90
478.56	489.91	478.56	489.91	478.56
478.21	489.76	478.21	489.76	478.21
477.87	489.61	477.87	489.61	477.87
477.52	489.46	477.52	489.46	477.52
477.18	489.31	477.18	489.31	477.18
476.83	489.16	476.83	489.16	476.83
476.49	489.01	476.49	489.01	476.49
476.14	488.86	476.14	488.86	476.14
475.80	488.71	475.80	488.71	475.80
475.45	488.56	475.45	488.56	475.45
475.11	488.41	475.11	488.41	475.11
474.76	488.26	474.76	488.26	474.76
474.42	488.11	474.42	488.11	474.42
474.08	487.96	474.08	487.96	474.08
473.73	487.81	473.73	487.81	473.73
473.39	487.66	473.39	487.66	473.39
473.04	487.51	473.04	487.51	473.04
472.70	487.36	472.70	487.36	472.70
472.35	487.21	472.35	487.21	472.35
472.01	487.06	472.01	487.06	472.01
471.66	486.91	471.66	486.91	471.66
471.32	486.76	471.32	486.76	471.32
470.97	486.61	470.97	486.61	470.97
470.63	486.46	470.63	486.46	470.63
470.28	486.31	470.28	486.31	470.28
469.94	486.16	469.94	486.16	469.94
469.59	486.01	469.59	486.01	469.59
469.25	485.86	469.25	485.86	469.25
468.90	485.71	468.90	485.71	468.90
468.56	485.56	468.56	485.56	468.56
468.21	485.41	468.21	485.41	468.21
467.87	485.26	467.87	485.26	467.87
467.52	485.11	467.52	485.11	467.52
467.18	484.96	467.18	484.96	467.18
466.83	484.81	466.83	484.81	466.83
466.49	484.66	466.49	484.66	466.49
466.14	484.51	466.14	484.51	466.14
465.80	484.36	465.80	484.36	465.80
465.45	484.21	465.45	484.21	465.45
465.11	484.06	465.11	484.06	465.11
464.76	483.91	464.76	483.91	464.76
464.42	483.76	464.42	483.76	464.42
464.08	483.61	464.08	483.61	464.08
463.73	483.46	463.73	483.46	463.73
463.39	483.31	463.39	483.31	463.39
463.04	483.16	463.04	483.16	463.04
462.70	483.01	462.70	483.01	462.70
462.35	482.86	462.35	482.86	462.35
462.01	482.71	462.01	482.71	462.01
461.66	482.56	461.66	482.56	461.66
461.32	482.41	461.32	482.41	461.32
460.97	482.26	460.97	482.26	460.97
460.63	482.11	460.63	482.11	460.63
460.28	481.96	460.28	481.96	460.28
459.94	481.81	459.94	481.81	459.94
459.59	481.66	459.59	481.66	459.59
459.25	481.51	459.25	481.51	459.25
458.90	481.36	458.90	481.36	458.90
458.56	481.21	458.56	481.21	458.56
458.21	481.06	458.21	481.06	458.21
457.87	480.91	457.87	480.91	457.87
457.52	480.76	457.52	480.76	457.52
457.18	480.61	457.18	480.61	457.18
456.83	480.46	456.83	480.46	456.83
456.49	480.31	456.49	480.31	456.49
456.14	480.16	456.14	480.16	456.14
455.80	480.01	455.80	480.01	455.80
455.45	479.86	455.45	479.86	455.45
455.11	479.71	455.11	479.71	455.11
454.76	479.56	454.76	479.56	454.76
454.42	479.41	454.42	479.41	454.42
454.08	479.26	454.08	479.26	454.08
453.73	479.11	453.73	479.11	453.73
453.39	478.96	453.39	478.96	453.39
453.04	478.81	453.04	478.81	453.04
452.70	478.66	452.70	478.66	452.70
452.35	478.51	452.35	478.51	452.35
452.01	478.36	452.01	478.36	452.01
451.66	478.21	451.66	478.21	451.66
451.32	478.06	451.32	478.06	451.32
450.97	477.91	450.97	477.91	450.97
450.63	477.76	450.63	477.76	450.63
450.28	477.61	450.28	477.61	450.28
449.94	477.46	449.94	477.46	449.94
449.59	477.31	449.59	477.31	449.59
449.25	477.16	449.25	477.16	449.25
448.90	477.01	448.90	477.01	448.90
448.56	476.86	448.56	476.86	448.56
448.21	476.71	448.21	476.71	448.21
447.87	476.56	447.87	476.56	447.87
447.52	476.41	447.52	476.41	447.52
447.18	476.26	447.18	476.26	447.18
446.83	476.11	446.83	476.11	446.83
446.49	475.96	446.49	475.96	446.49
446.14	475.81	446.14	475.81	446.14
445.80	475.66	445.80	475.66	445.80
445.45	475.51	445.45	475.51	445.45
445.11	475.36	445.11	475.36	445.11
444.76	475.21	444.76	475.21	444.76
444.42	475.06	444.42	475.06	444.42
444.08	474.91	444.08	474.91	444.08
443.73	474.76	443.73	474.76	443.73
443.39	474.61	443.39	474.61	443.39
443.04	474.46	443.04	474.46	443.04
442.70	474.31	442.70	474.31	442.70
442.35	474.16	442.35	474.16	442.35
442.01	474.01	442.01	474.01	442.01
441.66	473.86	441.66	473.86	441.66
441.32	473.71	441.32	473.71	441.32
440.97	473.56	440.97	473.56	440.97
440.63	473.41	440.63	473.41	440.63
440.28	473.26	440.28	473.26	440.28
439.94	473.11	439.94	473.11	439.94
439.59	472.96	439.59	472.96	439.59
439.25	472.81	439.25	472.81	439.25
438.90	472.66	438.90	472.66	438.90