

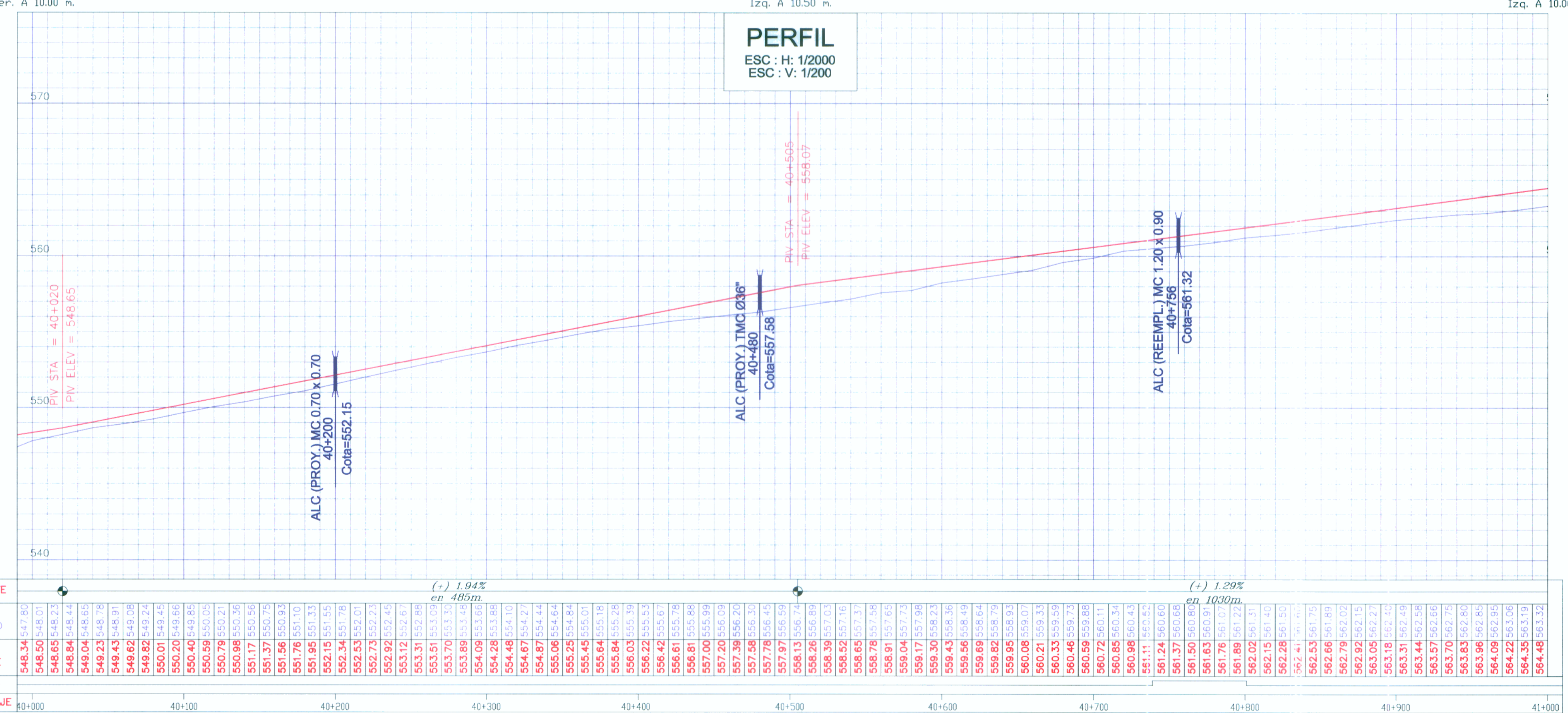
#### CUADRO DE COORDENADAS Y ELEMENTOS DE CURVA

No. PI	ANGULO	S	RADIO	PI	PC	PT	T	LC	EXT.	NORTE	ESTE	P%	S.A
84	11° 52' 30.47"	I	300.00	40+770.16	40+738.96	40+801.13	31.20	62.18	1.62	8,766,802.354	253,691.660	5.00	0.50

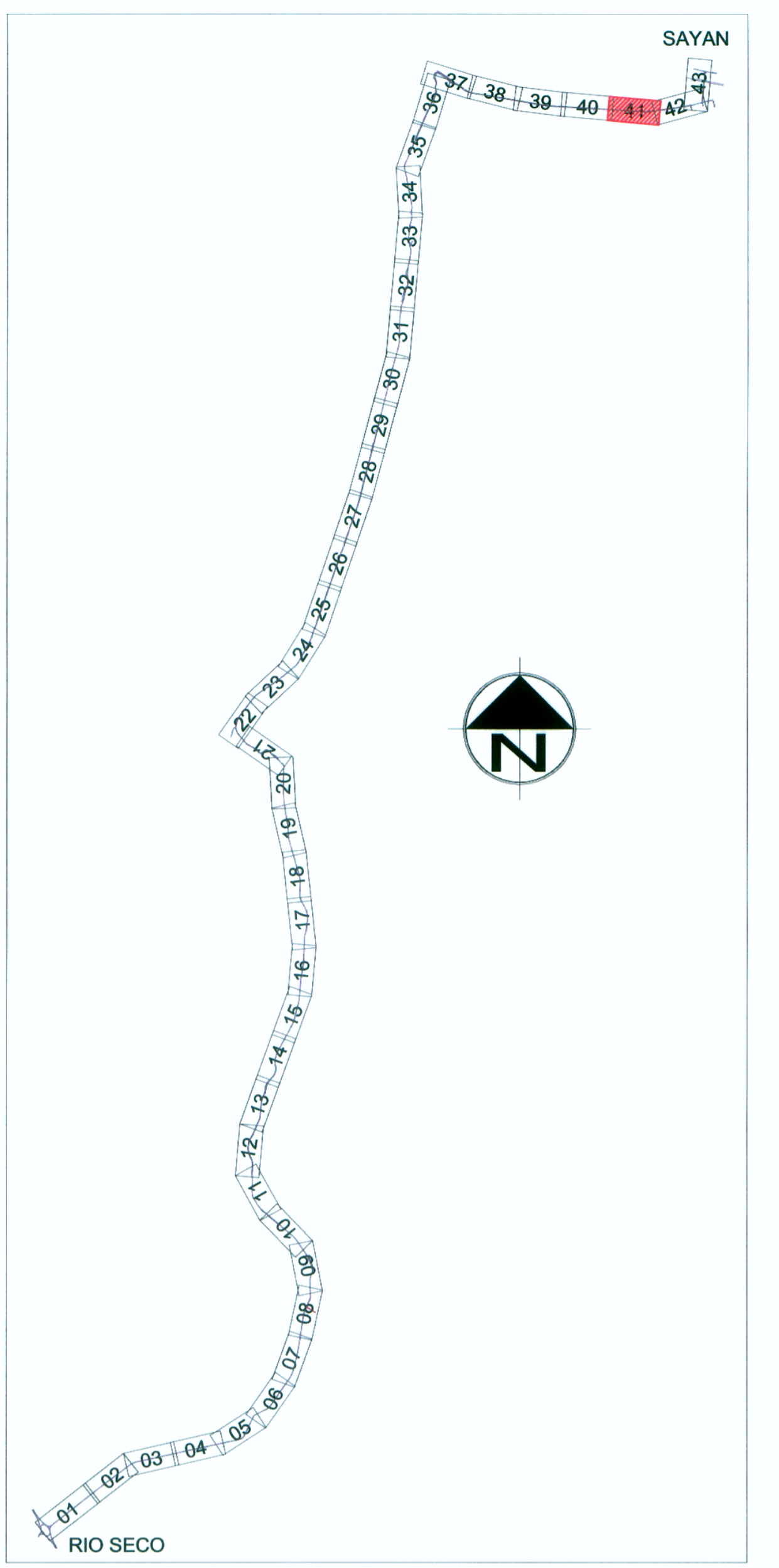
BM-40  
549,053  
40+041  
Der. A 10.00 m.

BM-40.5  
557,907  
40+545  
Izq. A 10.50 m.

BM-41  
563,784  
41+030  
Izq. A 10.00 m.



PENDIENTE	(+/-) 1.94% en 485m		(+/-) 1.29% en 1030m	
	COTAS TERRENO	COTAS RASANTE	SENTIDO	KILOMETRAJE
	548.34	547.80		40+000
	548.50	548.01		40+100
	548.65	548.23		40+200
	548.84	548.44		40+300
	549.04	548.65		40+400
	549.23	548.78		40+500
	549.43	548.91		40+600
	549.62	549.08		40+700
	549.82	549.24		40+800
	550.01	549.45		40+900
	550.20	549.66		41+000
	550.40	549.85		
	550.59	550.05		
	550.79	550.21		
	550.98	550.36		
	551.17	550.56		
	551.37	550.75		
	551.56	550.93		
	551.76	551.10		
	551.95	551.33		
	552.15	551.55		
	552.34	551.78		
	552.53	552.01		
	552.73	552.23		
	552.92	552.45		
	553.12	552.67		
	553.31	552.88		
	553.51	553.09		
	553.70	553.31		
	553.89	553.52		
	554.09	553.73		
	554.28	553.94		
	554.48	554.15		
	554.67	554.37		
	554.87	554.58		
	555.06	554.79		
	555.25	554.99		
	555.45	555.21		
	555.64	555.42		
	555.84	555.63		
	556.03	555.84		
	556.22	556.05		
	556.42	556.26		
	556.61	556.47		
	556.81	556.68		
	557.00	556.89		
	557.20	557.10		
	557.39	557.31		
	557.59	557.52		
	557.78	557.73		
	557.97	557.94		
	558.17	558.14		
	558.36	558.31		
	558.55	558.50		
	558.74	558.69		
	558.93	558.88		
	559.12	559.07		
	559.31	559.26		
	559.50	559.45		
	559.69	559.64		
	559.88	559.83		
	560.07	560.02		
	560.26	560.21		
	560.45	560.40		
	560.64	560.59		
	560.83	560.78		
	561.02	560.97		
	561.21	561.16		
	561.40	561.35		
	561.59	561.54		
	561.78	561.73		
	561.97	561.92		
	562.16	562.11		
	562.35	562.30		
	562.54	562.49		
	562.73	562.68		
	562.92	562.87		
	563.11	563.06		
	563.30	563.25		
	563.49	563.44		
	563.68	563.63		
	563.87	563.82		
	564.06	564.01		
	564.25	564.20		
	564.44	564.39		
	564.63	564.58		



#### LEYENDA

VÍA PAVIMENTADA	—	CANAL DE TIERRA	—
DERECHO DE VIA	—	VIVIENDA	—
EJE	—	POSTE DE LUZ	—
CANAL DE CONCRETO	—	POSTE DE TELÉFONO	—
RASANTE DE PERFIL	—	POSTE DE MEDIA TENSIÓN	—
TERRENO DE PERFIL	—	PUENTE	—

#### FORMATO

FORMATO	ESCALA GRÁFICA					
	1:200	2.00	4.00	6.00	8.00	10.00 m
A-1	1:2000	20.00	40.00	60.00	80.00	100.00 m
A-3	1:400	4.00	8.00	12.00	16.00	20.00 m
	1:4000	40.00	80.00	120.00	160.00	200.00 m