

Nº PI	ANGULO	S	RADIO (m)	PC (Km)	PT (Km)	T (m)	LC (m)	EXT (m)	PER (%)	S/a (m)
221	28°51'05"	I	180.00	61+081.47	61+182.11	48.30	90.84	5.86	5.54%	0.60
221A	44°57'14"	D	125.00	61+288.97	61+387.04	51.72	98.07	10.28	6.58%	1.10
221B	73°19'38"	I	115.00	61+501.51	61+648.69	85.61	147.18	28.36	6.83%	1.20
222	22°01'34"	D	200.00	61+740.24	61+817.12	38.92	76.89	3.75	7.90%	0.60

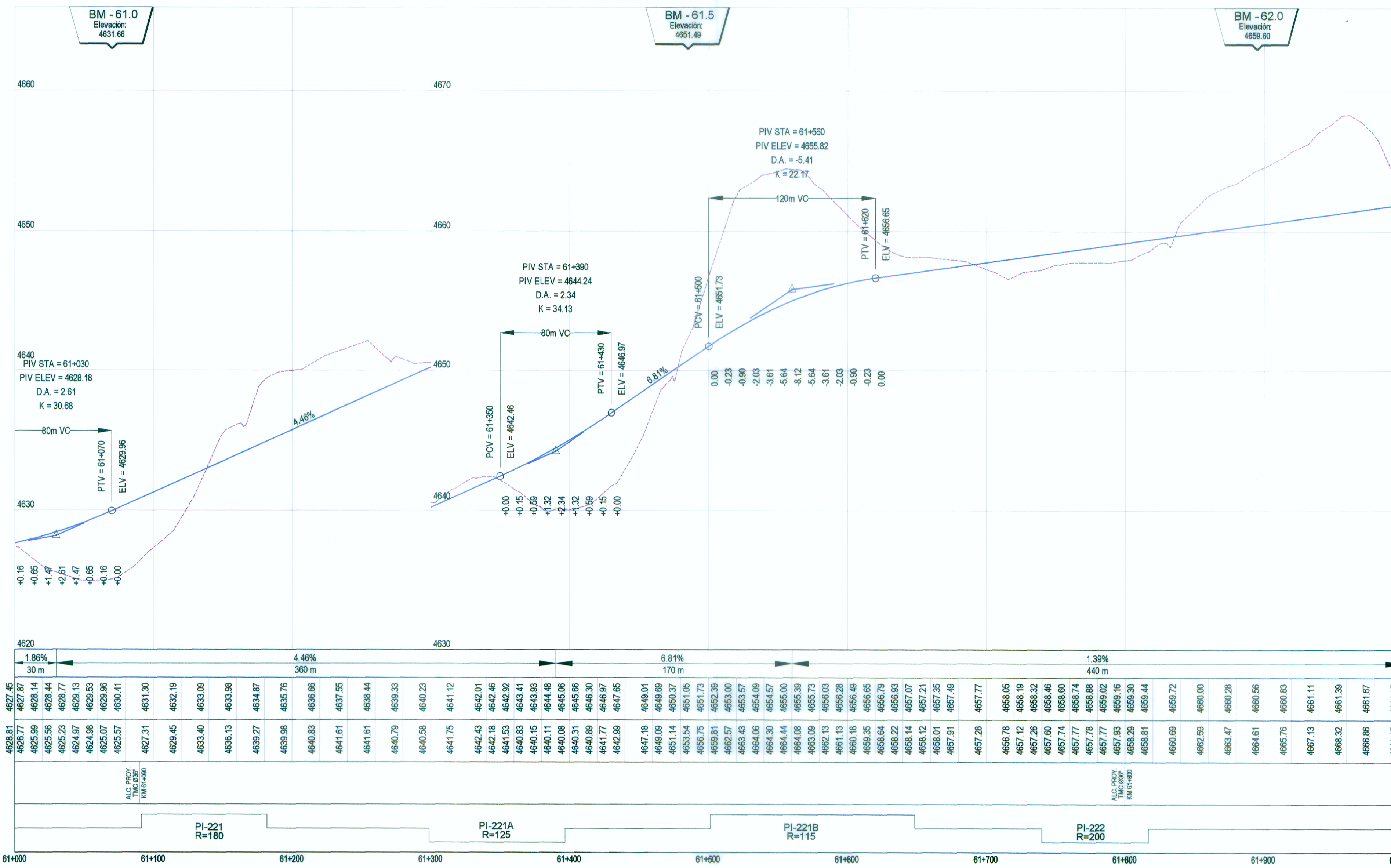
Nº PI	KM	COORDENADAS	
		NORTE	ESTE
221	61+137.77	8758604.36	342822.82
221A	61+350.68	8758818.49	342840.69
222B	61+587.12	8758974.8	343025.16
222	61+779.16	8759172.8	342938.64

PLANTA
H: 1/2,000

Ubicación: Km. 61+070.00 a 30.19 mts. Lado Izquierdo
Hito de concreto color amarillo

Ubicación: Km. 61+485.00 a 8.27 mts. Lado Derecho
Hito de concreto color amarillo

Ubicación: Km. 61+895.00 a 33.08 mts. Lado Derecho
Hito de concreto color amarillo



PLANTA:	
	EJE DE CARRETERA PROYECTADA
	CARRETERA EXISTENTE
	CURVA AGOSTOR
	CURVA MENOR
	RIOS Y LAGUNAS
	QUEBRADA
	CANAL
	ALCANTARILLAS PROYECTADAS
	VIVIENDA EXISTENTE
	TERRENO DE CULTIVO
	CERCO
	POSTE LUZ
	POSTE TELEFONO
	MURO DE PIEDRA
	BOFEDAL
	PLAZOLETAS
	NUMERO DE CURVA
PERFIL:	
	SUB RASANTE
	TERRENO EXISTENTE

PENDIENTE	COTA DE SUB RASANTE	COTA DE TERRENO	OBRAS DE ARTE	ALINEAMIENTO	KILOMETRAJE
1.86%	4627.45	4628.81		PI-221	61+000
	4626.77	4627.87			61+100
	4625.56	4628.14			61+200
	4625.23	4628.44			61+300
	4624.97	4628.77			61+400
	4624.57	4629.13			61+500
	4624.98	4629.53			61+600
	4625.07	4629.96			61+700
	4625.57	4630.41			61+800
	4627.31	4631.30			61+900
	4629.46	4632.19			62+000
	4633.40	4633.09			
	4636.13	4633.98			
	4639.27	4634.87			
	4639.98	4635.76			
	4640.83	4636.66			
	4641.61	4637.55			
	4641.61	4638.44			
	4640.79	4639.33			
	4640.58	4640.23			
	4641.75	4641.12			
	4642.43	4642.01			
	4642.18	4642.46			
	4641.53	4642.92			
	4640.83	4643.41			
	4640.15	4643.93			
	4640.11	4644.48			
	4640.08	4645.06			
	4640.31	4645.66			
	4640.99	4646.30			
	4641.77	4646.97			
	4642.99	4647.65			
	4647.18	4648.01			
	4648.09	4648.69			
	4651.14	4650.37			
	4653.54	4651.05			
	4656.75	4651.73			
	4659.81	4652.38			
	4662.57	4653.00			
	4663.43	4653.57			
	4664.06	4654.09			
	4664.30	4654.57			
	4664.44	4655.00			
	4664.08	4655.30			
	4663.09	4655.73			
	4661.13	4656.03			
	4660.16	4656.49			
	4659.35	4656.95			
	4658.04	4656.79			
	4658.22	4656.93			
	4658.14	4657.07			
	4658.12	4657.21			
	4658.01	4657.35			
	4657.81	4657.49			
	4657.28	4657.77			
	4656.78	4658.05			
	4657.12	4658.19			
	4657.26	4658.32			
	4657.60	4658.46			
	4657.74	4658.60			
	4657.77	4658.74			
	4657.76	4658.88			
	4657.77	4659.02			
	4657.93	4659.16			
	4658.29	4659.30			
	4658.81	4659.44			
	4660.69	4659.72			
	4662.99	4660.00			
	4663.47	4660.28			
	4664.61	4660.56			
	4665.76	4660.83			
	4667.13	4661.11			
	4668.32	4661.39			
	4668.86	4661.67			
	4663.35	4661.95			

PERFIL LONGITUDINAL
H: 1/2,000 V: 1/200