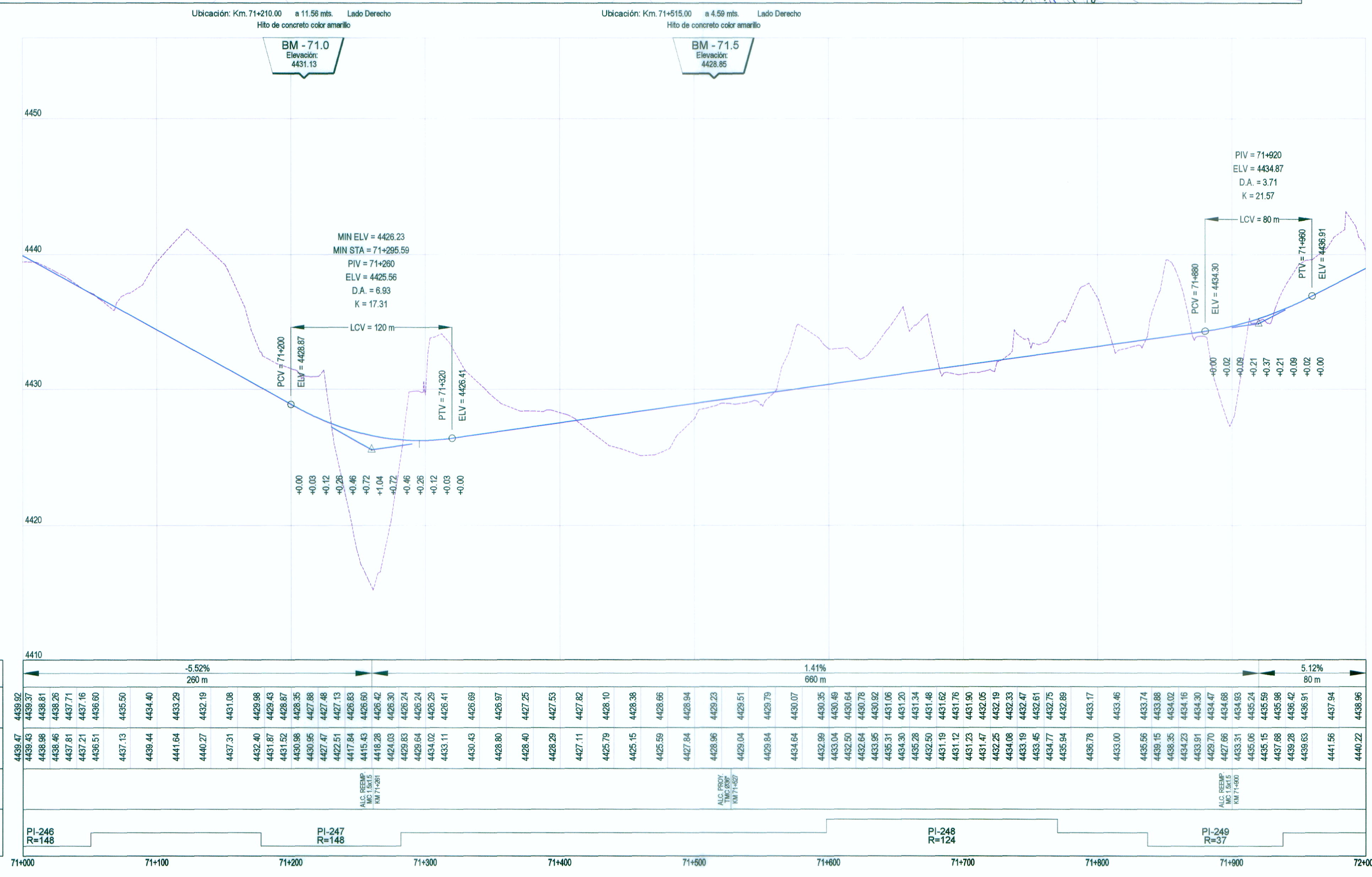


DATOS DE CURVA DEL ALINEAMIENTO HORIZONTAL										
Nº PI	ANGULO	S	RADIO (m)	PC (Km)	PT (Km)	T (m)	LC (m)	EXT (m)	PER (%)	S/a (m)
246	29°09'28"	D	148.00	70+975.46	71+050.77	38.49	75.32	4.92	6.09%	0.80
247	40°19'14"	D	148.00	71+177.54	71+261.69	54.34	104.15	9.66	6.09%	0.80
248	79°28'22"	I	124.00	71+598.14	71+770.14	103.08	172.00	37.25	6.60%	1.10
249	156°20'35"	D	37.00	71+837.24	71+938.20	176.67	100.96	143.50	7.65%	4.80

COORDENADAS DE PIS - ALINEAMIENTO HORIZONTAL			
Nº PI	KM	COORDENADAS	
		NORTE	ESTE
246	71+013.95	8767188.34	343584.71
247	71+231.88	8767388.97	343674
248	71+701.22	8767594.38	344101.02
249	72+013.91	8767929.16	344010.31

PLANTA
H: 1/2,000



LEYENDA	
PLANTA:	
	EJE DE CARRETERA PROYECTADA
	CARRETERA EXISTENTE
	CURVA OCTUBRER
	CURVA MENOR
	RIOS Y LAGUNAS
	QUEBRADA
	CANAL
	ALCANTARILLAS PROYECTADAS
	VIVIENDA EXISTENTE
	TERRENO DE CULTIVO
	CERCO
	POSTE LUZ
	POSTE TELEFONO
	MURO DE PIEDRA
	BOFEDAL
	PLAZOLETAS
	NUMERO DE CURVA
PERFIL:	
	SUB RASANTE
	TERRENO EXISTENTE

PENDIENTE	COTA DE SUB RASANTE	COTA DE TERRENO	OBRAS DE ARTE	ALINEAMIENTO
	4439.47	4439.92		PI-246 R=148
-5.52%	4439.43	4439.37		
	4438.96	4438.81		
	4438.46	4438.26		
	4437.81	4437.71		
	4437.21	4437.16		
	4436.51	4436.60		
	4435.73	4435.50		
	4434.44	4434.40		
	4441.54	4433.29		
	4440.27	4432.19		
	4437.31	4431.08		
	4432.40	4429.98		
	4431.67	4429.43		
	4431.52	4428.87		
	4430.96	4428.35		
	4430.95	4427.88		
	4427.47	4427.48		
	4422.51	4427.13		
	4417.84	4426.83		
	4415.03	4426.80		
	4418.28	4426.62		
	4424.03	4426.30		
	4423.04	4426.24		
	4423.04	4426.24		
	4424.02	4426.29		
	4423.11	4426.41		
	4430.43	4426.69		
	4428.80	4426.97		
	4428.40	4427.25		
	4428.29	4427.53		
	4427.11	4427.82		
	4425.79	4428.10		
	4425.15	4428.38		
	4425.59	4428.66		
	4427.84	4428.94		
	4428.96	4429.23		
	4429.04	4429.51		
	4429.84	4429.79		
	4434.64	4430.07		
	4432.99	4430.35		
	4433.04	4430.46		
	4432.30	4430.64		
	4432.04	4430.78		
	4433.95	4430.92		
	4435.31	4431.06		
	4434.30	4431.20		
	4435.28	4431.34		
	4432.50	4431.48		
	4431.19	4431.62		
	4431.12	4431.76		
	4431.23	4431.90		
	4431.47	4432.05		
	4432.25	4432.19		
	4434.08	4432.33		
	4433.19	4432.47		
	4433.45	4432.61		
	4434.77	4432.75		
	4435.94	4432.89		
	4436.78	4433.17		
	4433.00	4433.46		
	4435.56	4433.74		
	4439.15	4433.88		
	4438.35	4434.02		
	4434.23	4434.16		
	4433.91	4434.30		
	4429.70	4434.47		
	4427.66	4434.68		
	4433.31	4434.93		
	4435.06	4435.24		
	4435.15	4435.59		
	4437.88	4435.98		
	4439.28	4436.42		
	4439.03	4436.91		
	4441.56	4437.94		
	4440.22	4438.96		

PERFIL LONGITUDINAL
H: 1/2,000 V: 1/200