

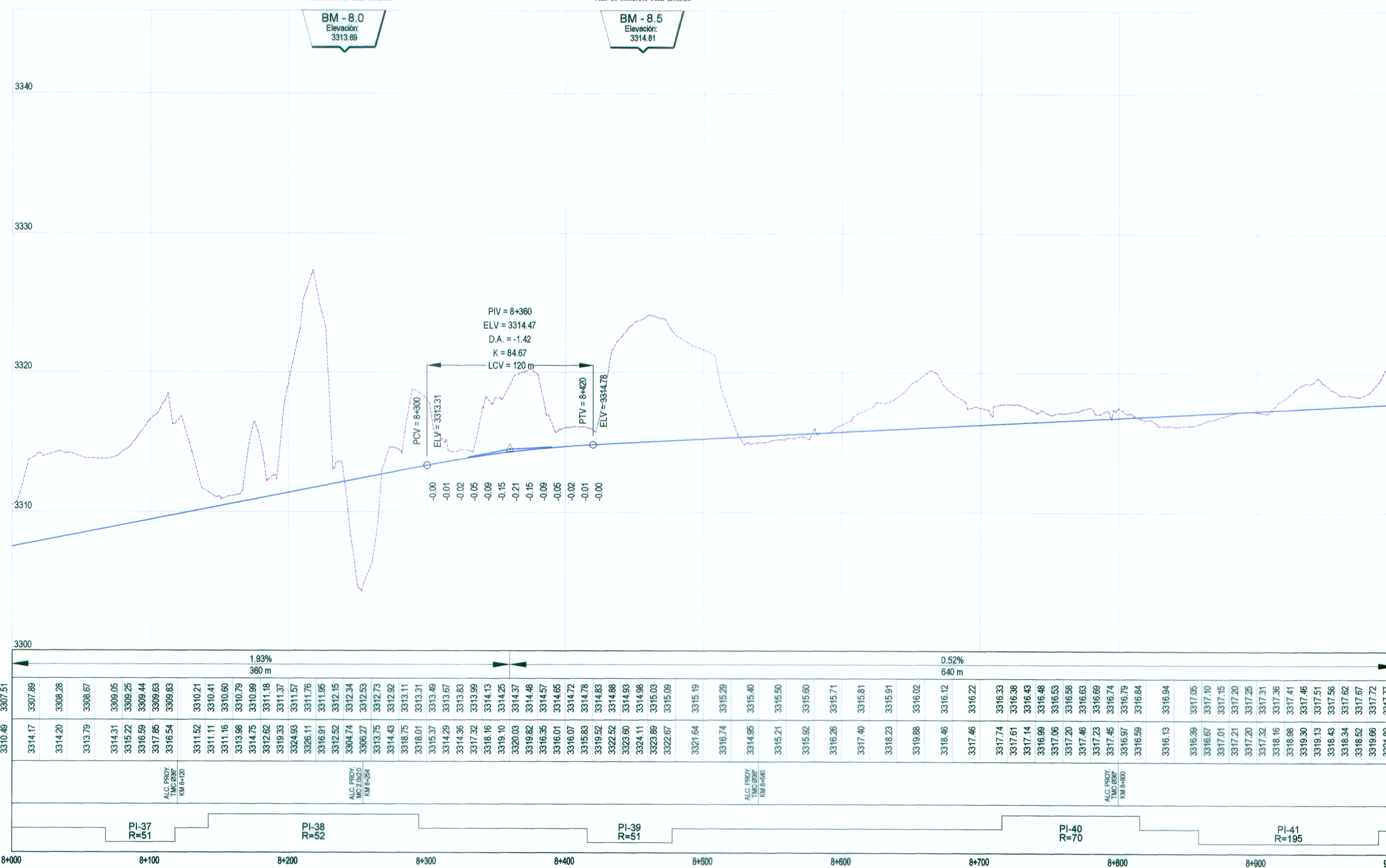
PLANTA
H: 1/2,000

DATOS DE CURVA DEL ALINEAMIENTO HORIZONTAL										
Nº PI	ANGULO	S	RADIO (m)	PC (Km)	PT (Km)	T (m)	LC (m)	EXT (m)	PER (%)	S/a (m)
37	58°25'01"	D	51.00	8+068.19	8+118.41	27.36	50.22	6.87	7.98%	3.30
38	167°24'46"	I	52.00	8+142.55	8+294.49	471.50	151.94	422.35	7.96%	3.20
39	68°58'31"	D	51.00	8+416.44	8+477.83	35.04	61.40	10.87	7.98%	3.30
40	81°23'23"	I	70.00	8+716.30	8+815.74	60.20	99.44	22.32	7.60%	2.30
41	38°18'43"	D	195.00	8+858.36	8+988.75	67.74	130.39	11.43	4.84%	0.50

COORDENADAS DE PIS - ALINEAMIENTO HORIZONTAL			
Nº PI	KM	COORDENADAS	
		NORTE	ESTE
37	8+065.54	8733903.7	325861.84
38	8+614.05	8733876.89	328184.15
39	8+451.47	8734045.11	325578.61
40	8+776.50	8734377.28	325546.63
41	8+828.10	8734386.53	325376.32

Ubicación: Km. 8+240.00 a 4.82 mts. Lado Derecho
Hilo de concreto color amarillo

Ubicación: Km. 8+455.00 a 38.87 mts. Lado Izquierdo
Hilo de concreto color amarillo



PENDIENTE	1.93% 360 m		0.52% 640 m	
COTA DE SUB RASANTE	3314.17	3307.89	3316.13	3316.84
COTA DE TERRENO	3314.20	3308.28	3316.33	3316.94
OBRAS DE ARTE	3313.79	3308.67	3316.38	3316.98
ALINEAMIENTO	3314.31	3309.06	3316.43	3317.03
KILOMETRAJE	3315.22	3309.25	3316.46	3317.06
	3316.59	3309.44	3316.53	3317.10
	3317.85	3309.63	3316.58	3317.14
	3316.54	3309.83	3316.63	3317.18
	3311.52	3310.21	3316.68	3317.22
	3311.11	3310.41	3316.73	3317.26
	3311.16	3310.60	3316.78	3317.30
	3313.88	3310.79	3316.83	3317.34
	3314.75	3310.99	3316.88	3317.38
	3312.62	3311.18	3316.93	3317.42
	3319.33	3311.37	3316.98	3317.46
	3324.60	3311.57	3317.03	3317.50
	3326.11	3311.76	3317.08	3317.54
	3316.91	3311.95	3317.13	3317.58
	3312.52	3312.15	3317.18	3317.62
	3304.74	3312.34	3317.23	3317.66
	3306.27	3312.53	3317.28	3317.70
	3313.75	3312.73	3317.33	3317.74
	3314.43	3312.92	3317.38	3317.78
	3318.75	3313.11	3317.43	3317.82
	3318.01	3313.31	3317.48	3317.86
	3315.37	3313.51	3317.53	3317.90
	3314.29	3313.67	3317.58	3317.94
	3314.36	3313.83	3317.63	3317.98
	3317.32	3313.99	3317.68	3318.02
	3318.16	3314.13	3317.73	3318.06
	3319.10	3314.25	3317.78	3318.10
	3320.03	3314.37	3317.83	3318.14
	3319.82	3314.48	3317.88	3318.18
	3316.36	3314.65	3317.93	3318.22
	3316.01	3314.82	3317.98	3318.26
	3316.07	3314.72	3318.03	3318.30
	3315.63	3314.78	3318.08	3318.34
	3319.52	3314.83	3318.13	3318.38
	3322.52	3314.88	3318.18	3318.42
	3323.60	3314.93	3318.23	3318.46
	3324.11	3314.98	3318.28	3318.50
	3323.89	3315.03	3318.33	3318.54
	3322.67	3315.09	3318.38	3318.58
	3321.64	3315.19	3318.43	3318.62
	3316.74	3315.29	3318.48	3318.66
	3314.95	3315.40	3318.53	3318.70
	3315.21	3315.50	3318.58	3318.74
	3315.92	3315.60	3318.63	3318.78
	3316.26	3315.71	3318.68	3318.82
	3317.40	3315.81	3318.73	3318.86
	3318.23	3315.91	3318.78	3318.90
	3319.88	3316.02	3318.83	3318.94
	3318.46	3316.12	3318.88	3318.98
	3317.46	3316.22	3318.93	3319.02
	3317.74	3316.33	3318.98	3319.06
	3317.61	3316.38	3319.03	3319.10
	3317.14	3316.43	3319.08	3319.14
	3316.89	3316.46	3319.13	3319.18
	3317.06	3316.53	3319.18	3319.22
	3317.20	3316.58	3319.23	3319.26
	3317.46	3316.63	3319.28	3319.30
	3317.23	3316.69	3319.33	3319.34
	3317.45	3316.74	3319.38	3319.38
	3316.57	3316.79	3319.43	3319.42
	3316.59	3316.84	3319.48	3319.46
	3316.13	3316.94	3319.53	3319.50
	3316.39	3317.05	3319.58	3319.54
	3316.67	3317.10	3319.63	3319.58
	3317.01	3317.15	3319.68	3319.62
	3317.21	3317.20	3319.73	3319.66
	3317.20	3317.25	3319.78	3319.70
	3317.52	3317.31	3319.83	3319.74
	3316.16	3317.36	3319.88	3319.78
	3316.98	3317.41	3319.93	3319.82
	3319.00	3317.46	3319.98	3319.86
	3319.13	3317.51	3320.03	3319.90
	3318.43	3317.56	3320.08	3319.94
	3318.34	3317.62	3320.13	3319.98
	3318.52	3317.67	3320.18	3320.02
	3317.62	3317.72	3320.23	3320.06
	3321.82	3317.77	3320.28	3320.10

LEYENDA

PLANTA:

- 4+500: EJE DE CARRETERA PROYECTADA
- : CARRETERA EXISTENTE
- : CURVA MAYOR
- : CURVA MENOR
- : RIOS Y LAGUNAS
- : QUEBRADA
- : CANAL
- : ALCANTARILLAS PROYECTADAS
- : VIVIENDA EXISTENTE
- : TERRENO DE CULTIVO
- : CERCO
- : POSTE LUZ
- : POSTE TELEFONO
- : MURO DE PIEDRA
- : BOFEDAL
- : PLAZOLETAS
- (PI-01): NUMERO DE CURVA

PERFIL:

- : SUB RASANTE
- : TERRENO EXISTENTE

PERFIL LONGITUDINAL
H: 1/2,000 V: 1/200