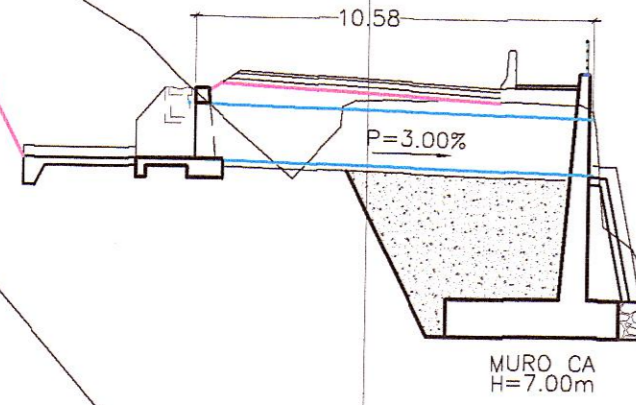


ALCANTARILLA TIPO TMC Ø60"  
REEMPLAZAR  
KM 71+831  
ESVIAJE 109°



71+840  
CT=3304.26  
CS=3304.41  
AC=85.20  
AR=1.92

CT=3304.60  
CS=3304.80  
AC=0.00  
AR=5.14

CT=3304.67  
CS=3304.84  
AC=0.00  
AR=7.71

CT=3305.25  
CS=3305.26  
AC=1.72  
AR=2.60

CT=3305.86  
CS=3305.69  
AC=3.27  
AR=0.00

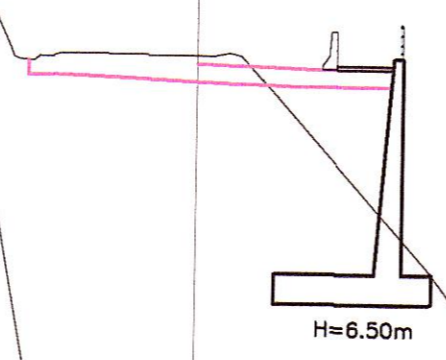
CT=3306.26  
CS=3306.11  
AC=10.01  
AR=0.00

CT=3306.66  
CS=3306.66  
AC=8.16  
AR=2.47

CT=3311.00  
CS=3307.81  
AC=113.23  
AR=4.16

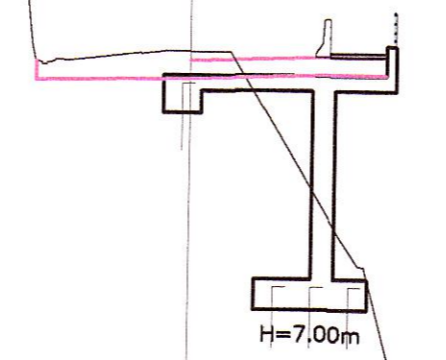
CT=3320.26  
CS=3308.23  
AC=202.35  
AR=0.00

71+960



CT=3299.82  
CS=3299.14  
AC=3.85  
AR=6.55

71+940



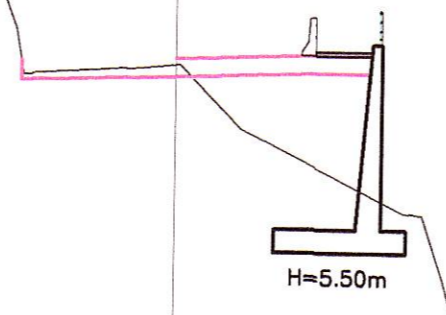
CT=3300.80  
CS=3300.09  
AC=3.37  
AR=15.99

71+930



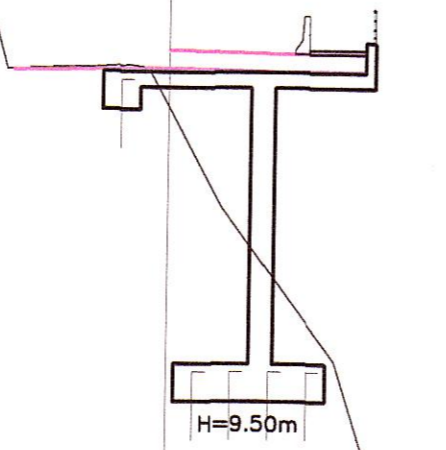
CT=3301.11  
CS=3300.55  
AC=18.93  
AR=0.00

71+920



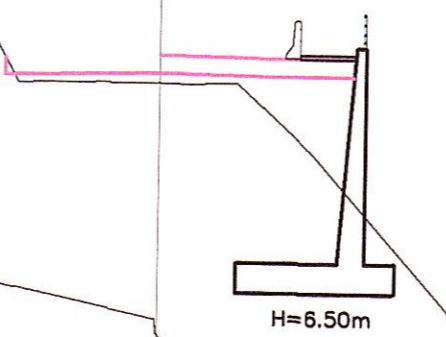
CT=3301.32  
CS=3301.00  
AC=1.03  
AR=10.74

71+900



CT=3300.87  
CS=3301.87  
AC=0.25  
AR=27.20

71+880



CT=3302.47  
CS=3302.72  
AC=0.06  
AR=8.44

71+860

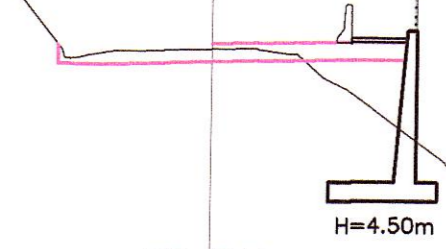
CT=3332.35  
CS=3303.57  
AC=418.85  
AR=0.00

72+060



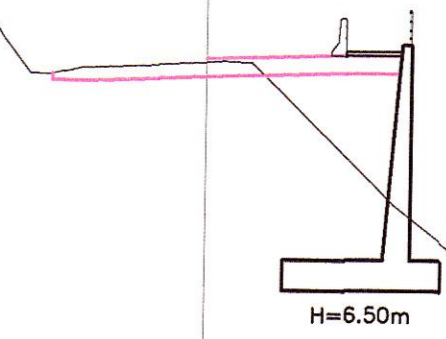
CT=3294.11  
CS=3293.86  
AC=2.30  
AR=2.91

72+050



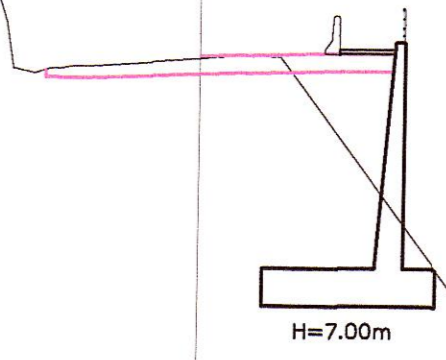
CT=3294.72  
CS=3294.40  
AC=1.89  
AR=3.76

72+040



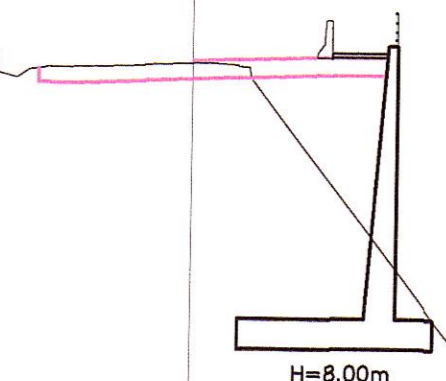
CT=3295.33  
CS=3294.94  
AC=1.96  
AR=8.56

72+030



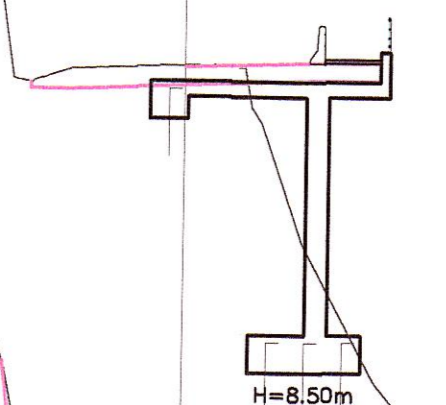
CT=3295.90  
CS=3295.48  
AC=2.40  
AR=7.12

72+020



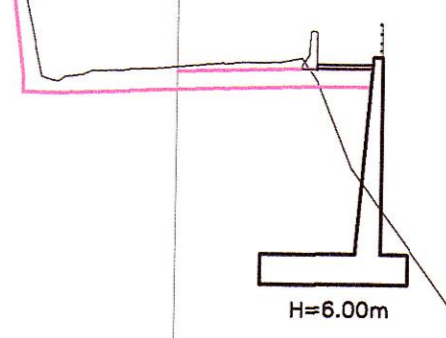
CT=3296.44  
CS=3296.03  
AC=2.28  
AR=11.27

72+010



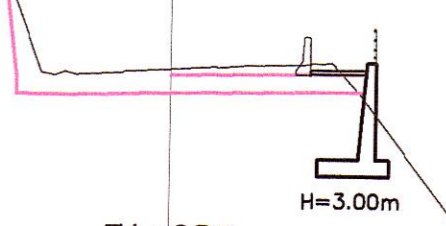
CT=3297.10  
CS=3296.58  
AC=2.87  
AR=20.03

72+000



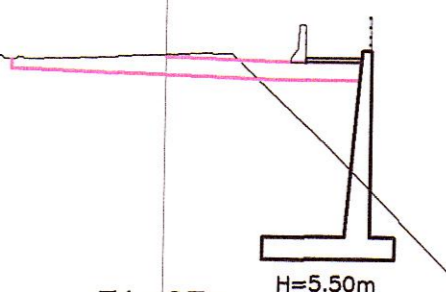
CT=3297.71  
CS=3297.11  
AC=5.85  
AR=3.88

71+990



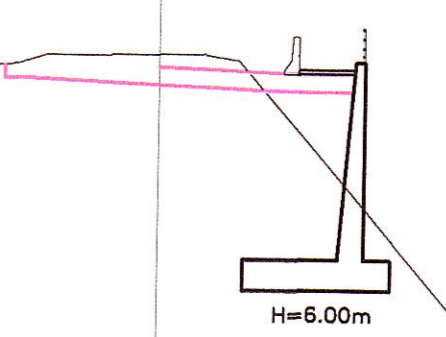
CT=3298.26  
CS=3297.63  
AC=6.62  
AR=0.31

71+980



CT=3298.66  
CS=3298.14  
AC=2.84  
AR=4.93

71+970



CT=3299.45  
CS=3298.65  
AC=4.73  
AR=4.78

HOB CONSULTORES S.A.  
ING. CARLOS URQUIAGA NAVARRO  
Esp. TOPOGRAFIA, PLANEAMIENTO Y DISEÑO VIAL  
CIP N° 81237



HOB CONSULTORES S.A.  
ING. CESAR GUEVARA MALPARTIDA  
JEFE DE ESTUDIO  
CIP N° 84324



LEYENDA  
CERCO DE CONCRETO  
CERCO DE ADOBE  
CERCO DE PIEDRA  
CERCO DE ALAMBRE  
CERCO DE MADERA  
LIMITE DE PROPIEDAD

LEYENDA  
CT= COTA TERRENO  
CS= COTA SUBRRIANTE  
AC= AREA DE CORTE  
AR= AREA DE RELLENO  
AB= AREA DE BANQUETA

PERU Ministerio de Transportes y Comunicaciones Provias Nacional

Compania de Minas Buena Ventura

HOB CONSULTORES S.A. CALLE ADJUNA BLANCA N° 102 - LIMA 33 - PERU TELEFONO 715-8111 FAX 715-8324 Email: hob@hobperu.com

Jefe Estudio: ING. CESAR GUEVARA  
Especialista: ING. CARLOS URQUIAGA  
Revisión:  
Proceso y Ptoe: GER. ESTUDIOS-HOB

REVISIONES		
N°	FECHA	DESCRIPCION

ESTUDIO DEFINITIVO DE LA REHABILITACION Y MEJORAMIENTO CARRETERA: HUANCVELICA - LIRCAY TRAMO: 1+550(Av. Los Chancas)-LIRCAY CONTRATO N° 7341-2012

SECCIONES TRANSVERSALES KM 71+750 - KM 72+060  
FECHA: SEPTIEMBRE 2013  
ESCALA FORMATO A1: 1/200  
ESCALA FORMATO A3: 1/400  
7341-12-ST-212