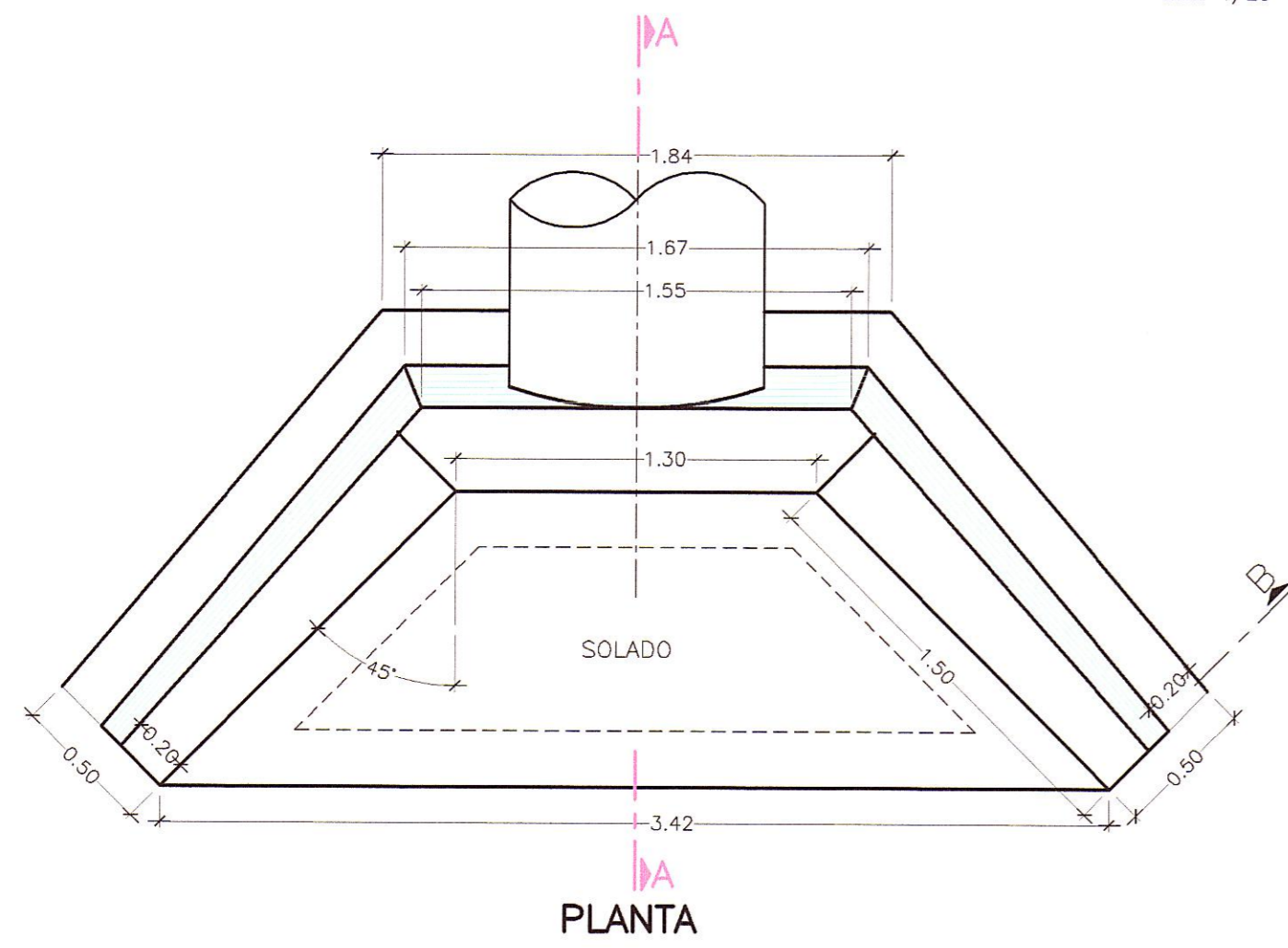
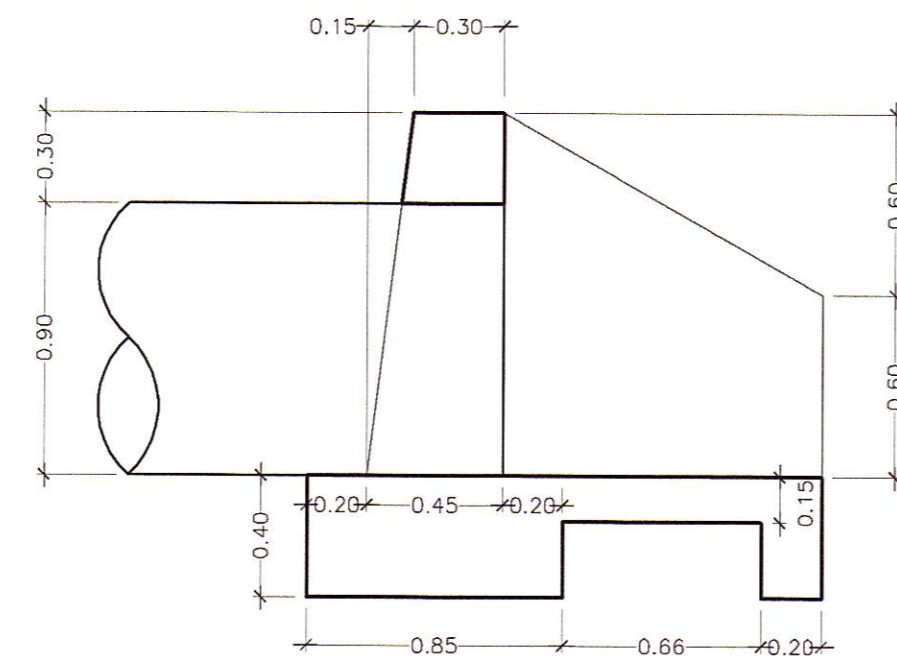


ALCANTARILLA TMC ϕ 36"
CABEZAL NORMAL

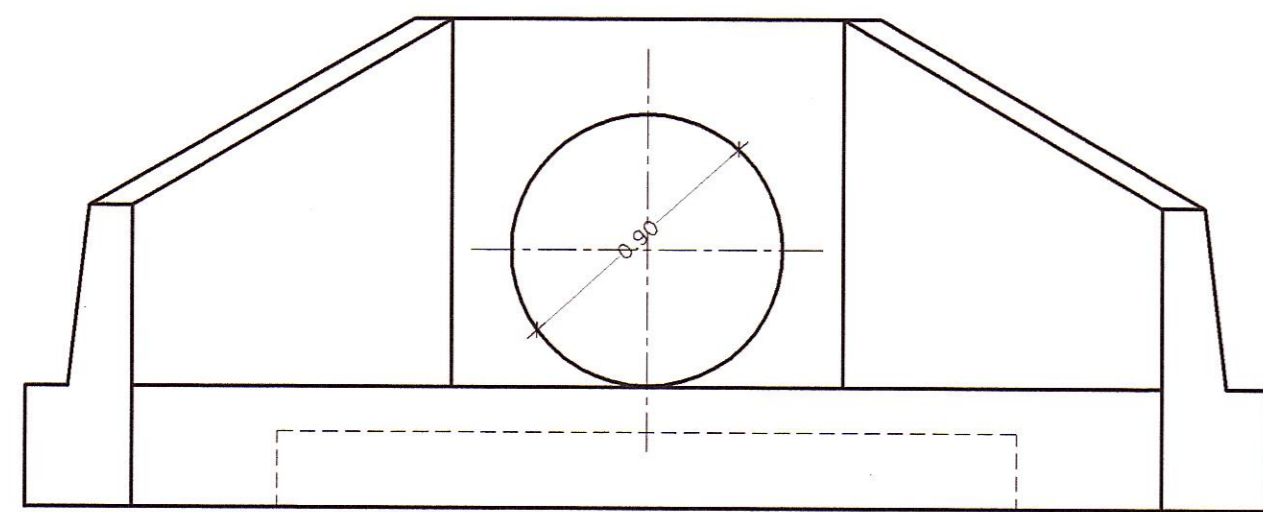
ESC. 1/25



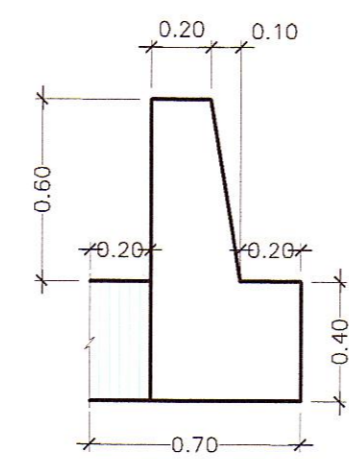
PLANTA



CORTE A - A



ELEVACION

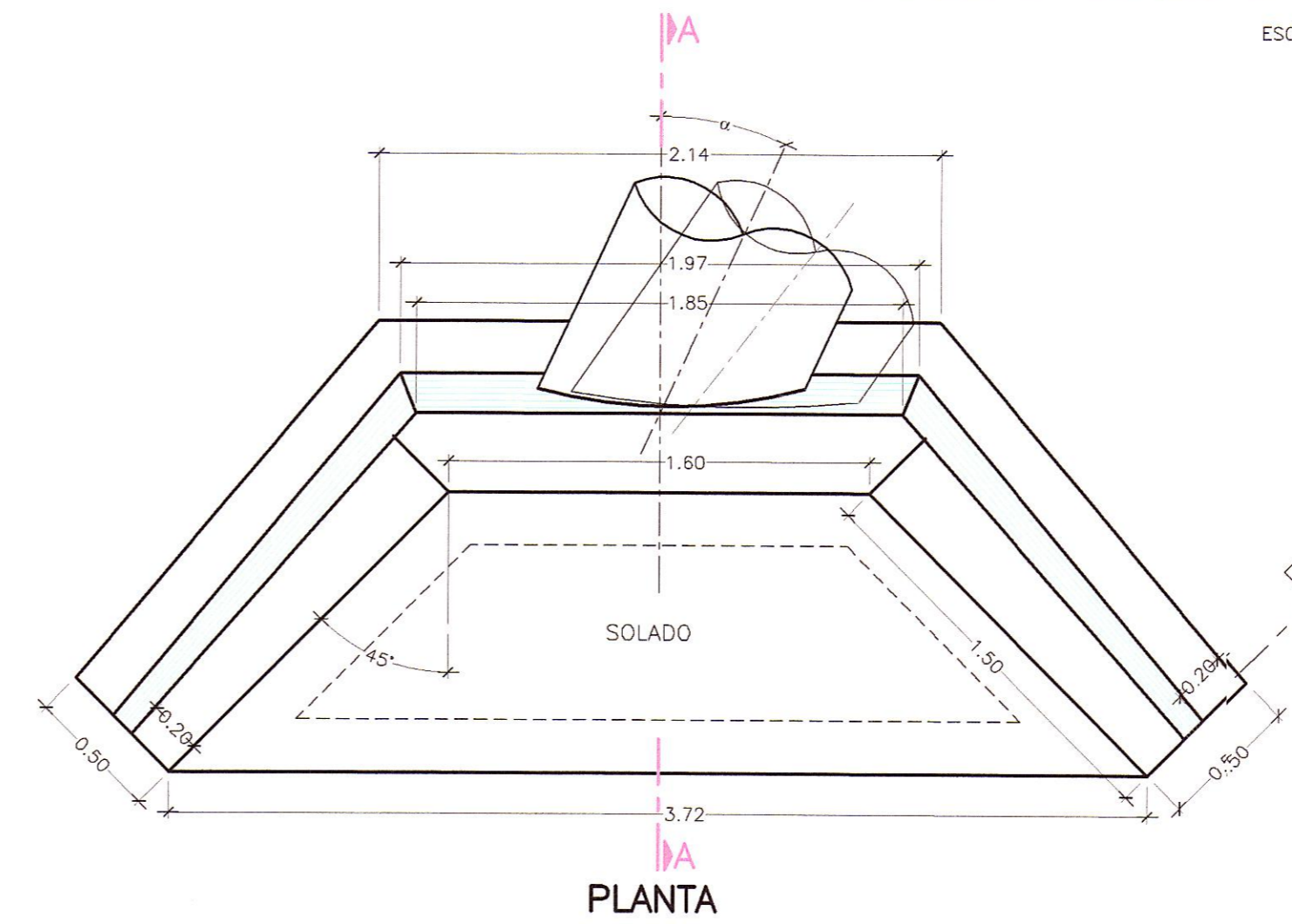


CORTE B - B

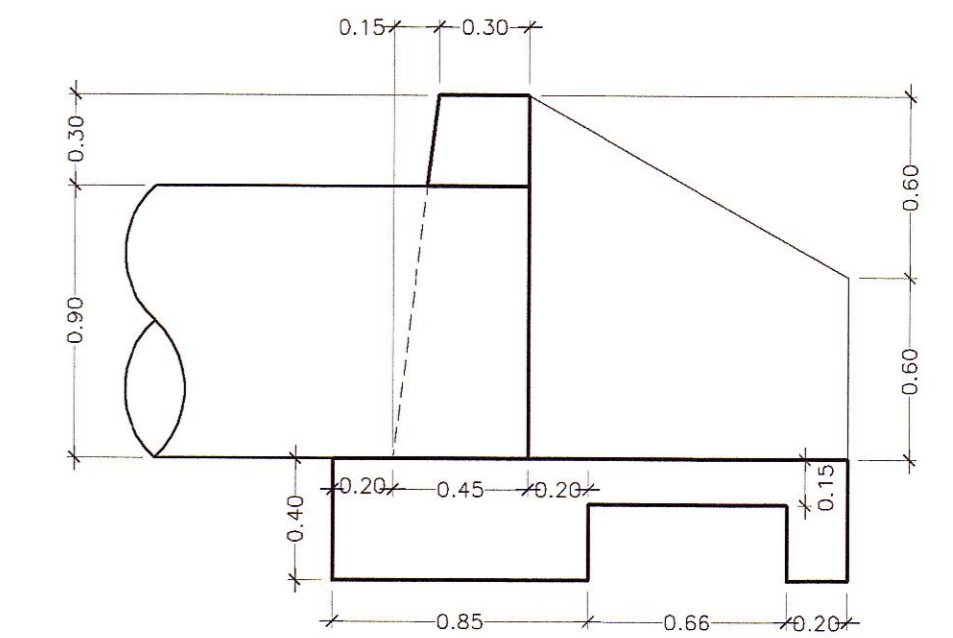
ALCANTARILLA TMC ϕ 36"
CABEZAL ESPECIAL (ESVIAJAMIENTO > 105°)

ESC. 1/25

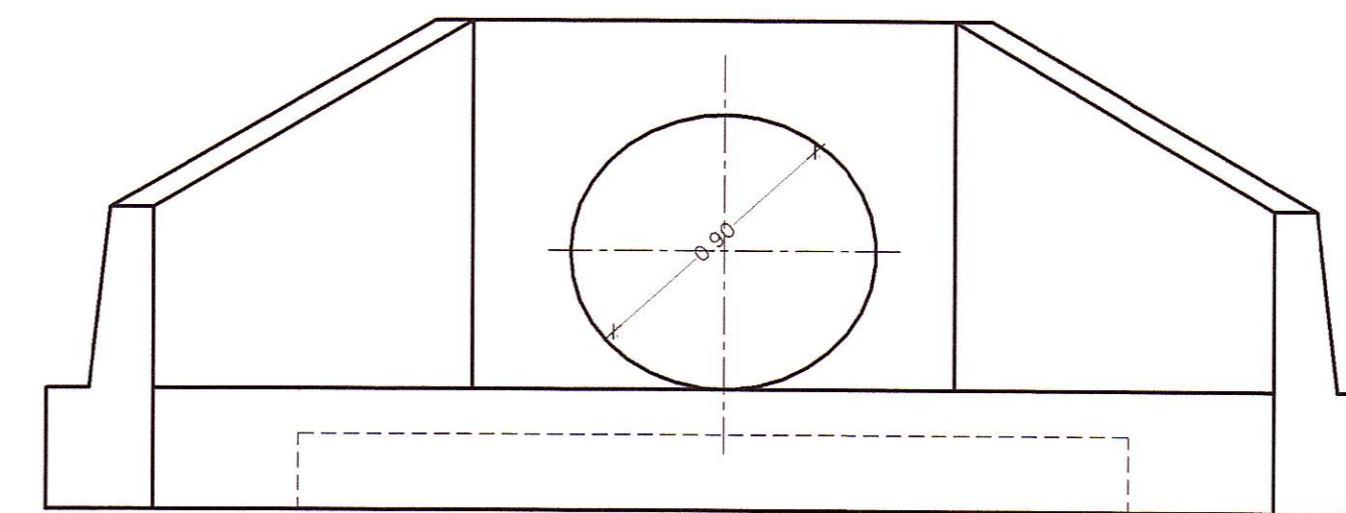
098



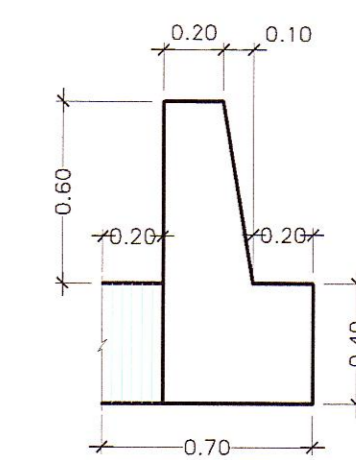
PLANTA



CORTE A - A



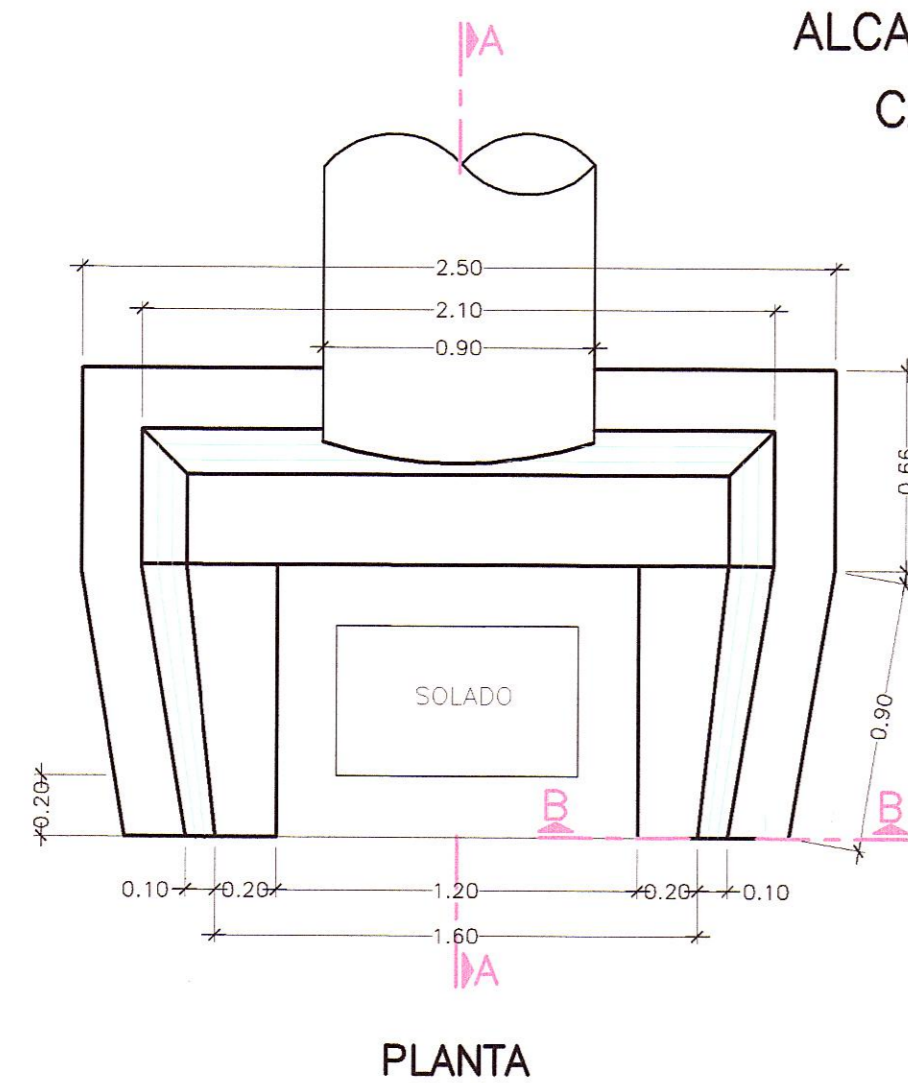
ELEVACION



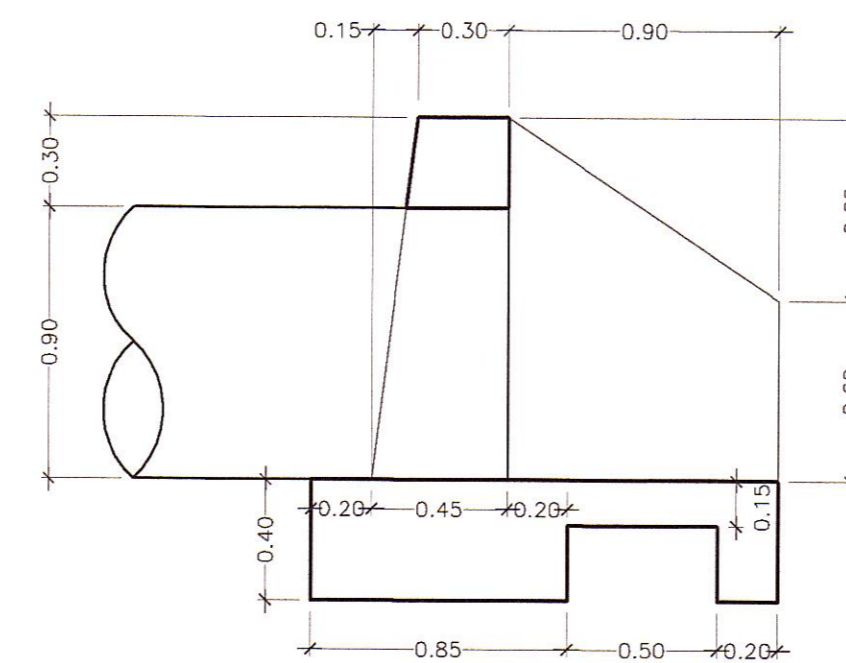
CORTE B - B

ALCANTARILLA TMC ϕ 36"
CABEZAL RECTO

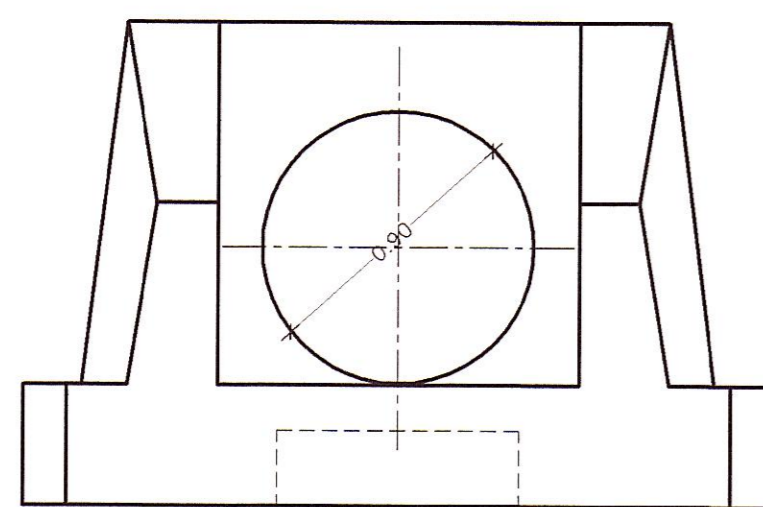
ESC. 1/25



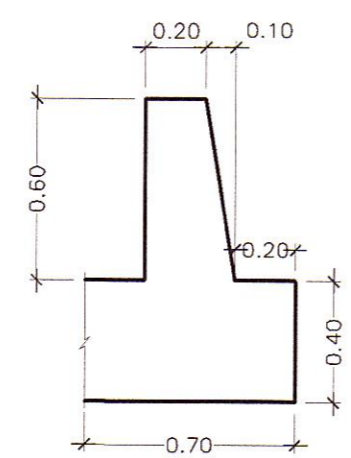
PLANTA



CORTE A - A



ELEVACION



CORTE B - B

ESPECIFICACIONES
-CONCRETO ALCANTARILLA f'c=175kg/cm2



HOB CONSULTORES S.A.
ING. WILKIN RONT VILVERDE GUTIERREZ
Esp. HIDROLOGIA Y HIDRAULICA
CIP Nº 97214



HOB CONSULTORES S.A.
ING. CESAR GUEVARA MALPARTIDA
Esp. INGENIERIA CIVIL
CIP Nº 84324

REVISIONES		
N°	FECHA	DESCRIPCION