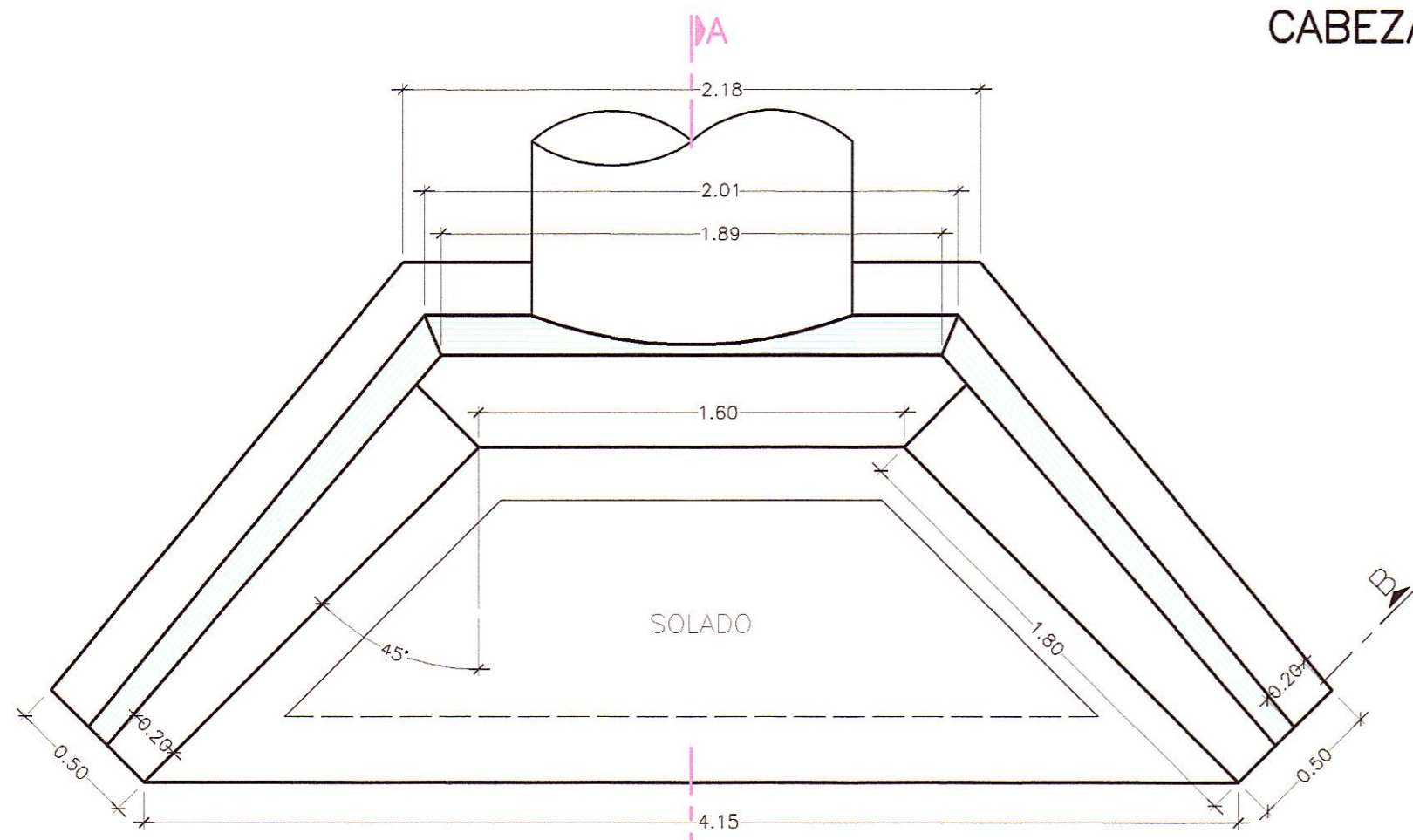
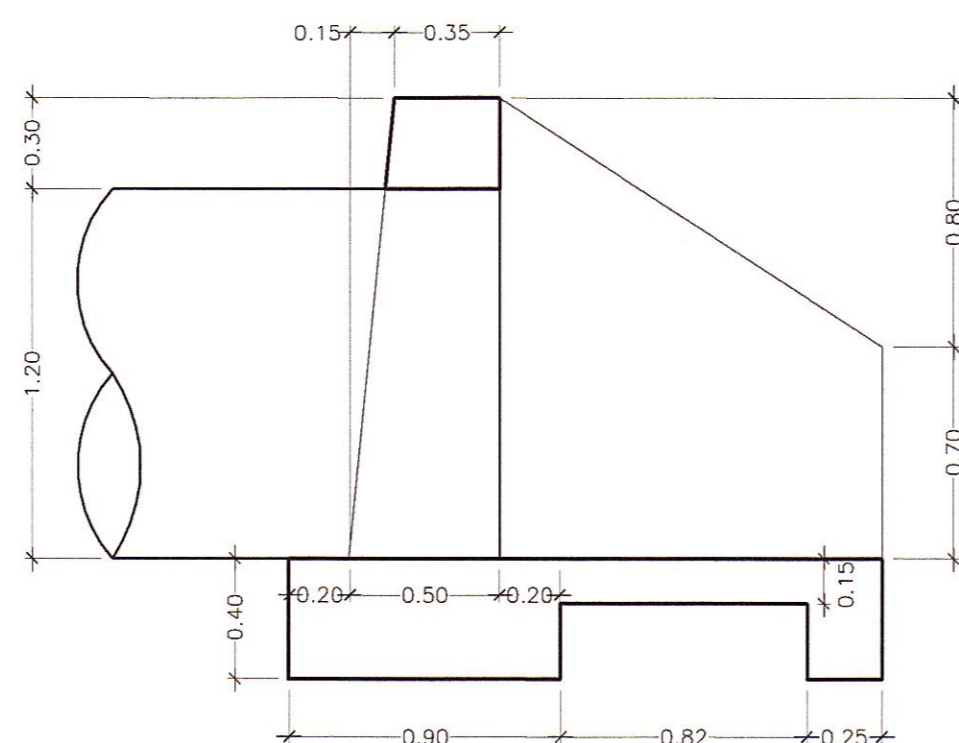


ALCANTARILLA TMCØ48"  
CABEZAL NORMAL

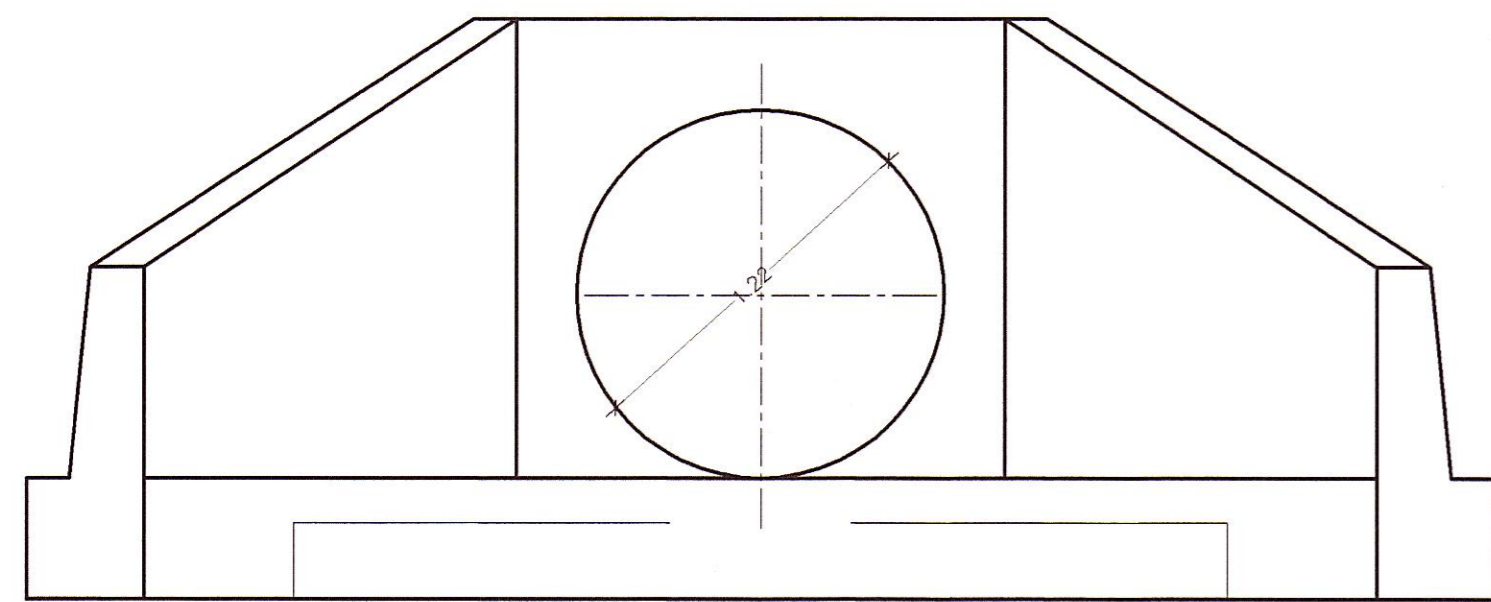
ESC. 1/25



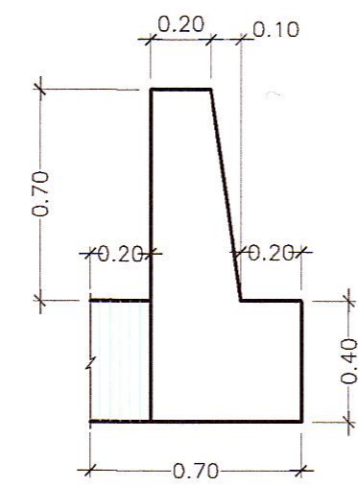
PLANTA



CORTE A-A



ELEVACION

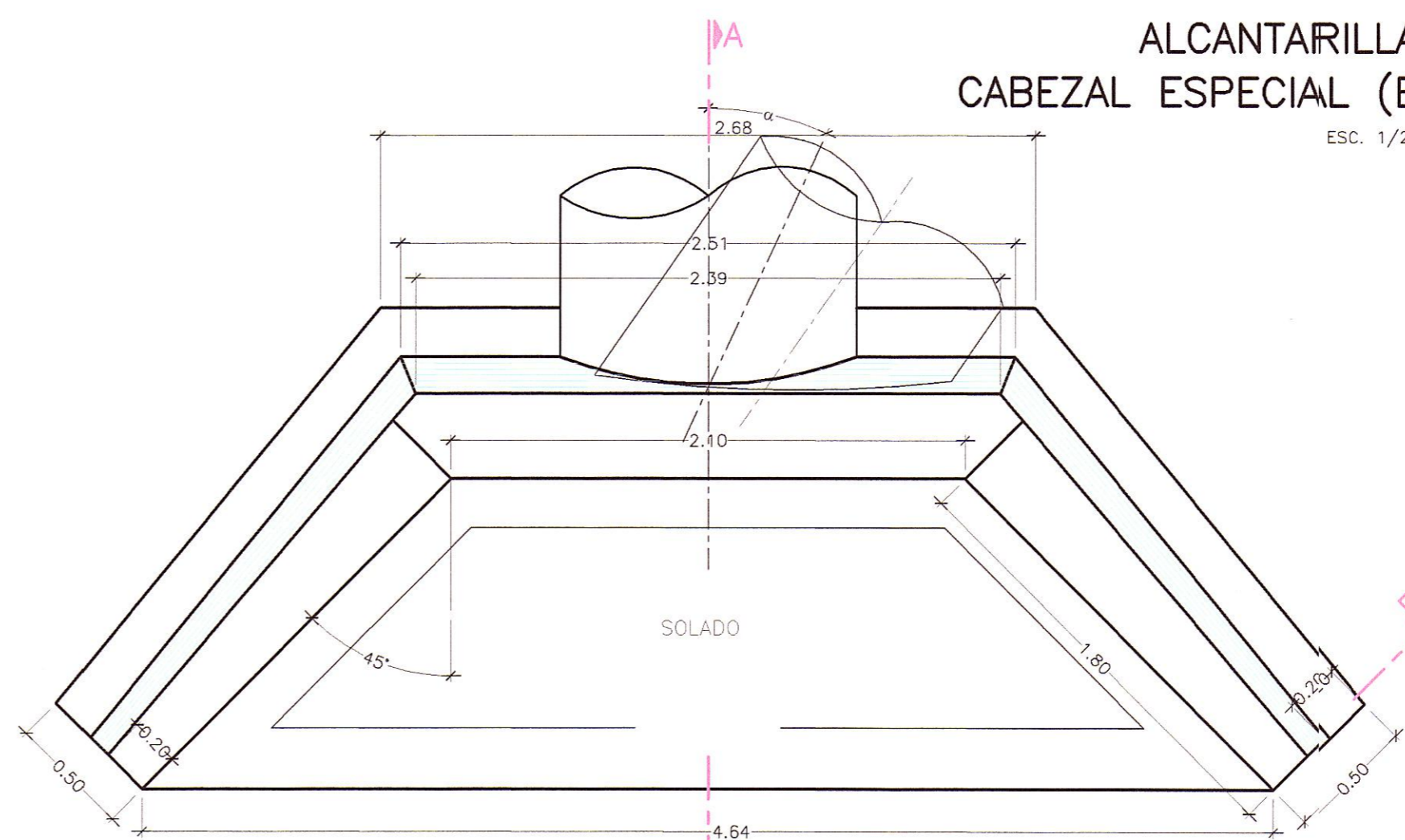


CORTE B-B

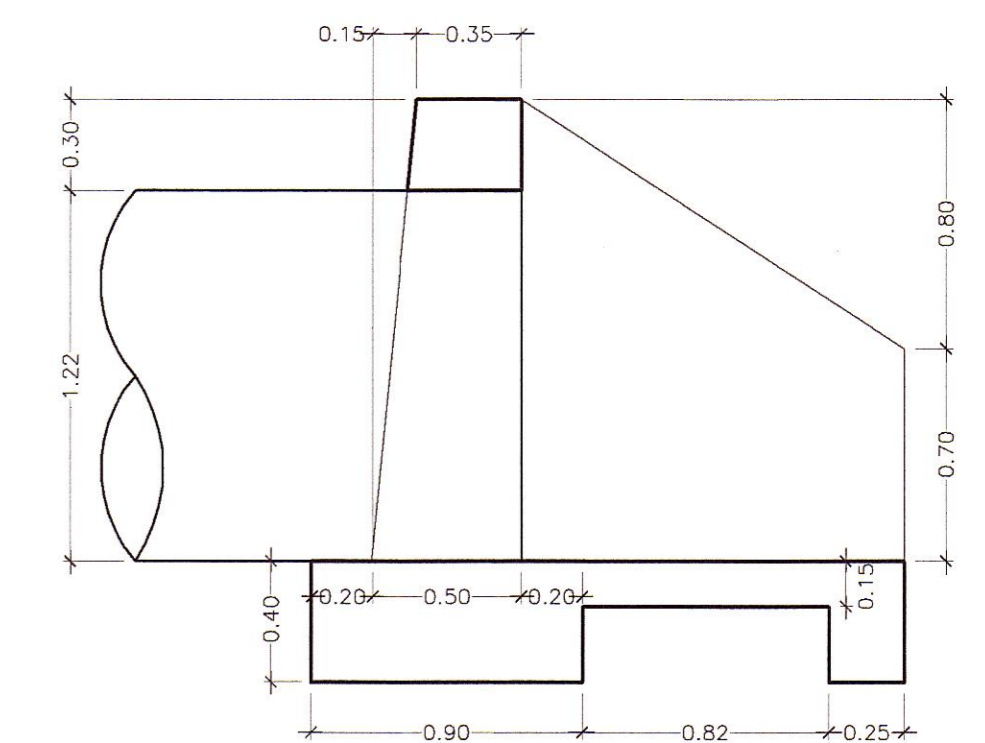
ALCANTARILLA TMCØ48"  
CABEZAL ESPECIAL (ESVIAJAMIENTO > 105°)

ESC. 1/25

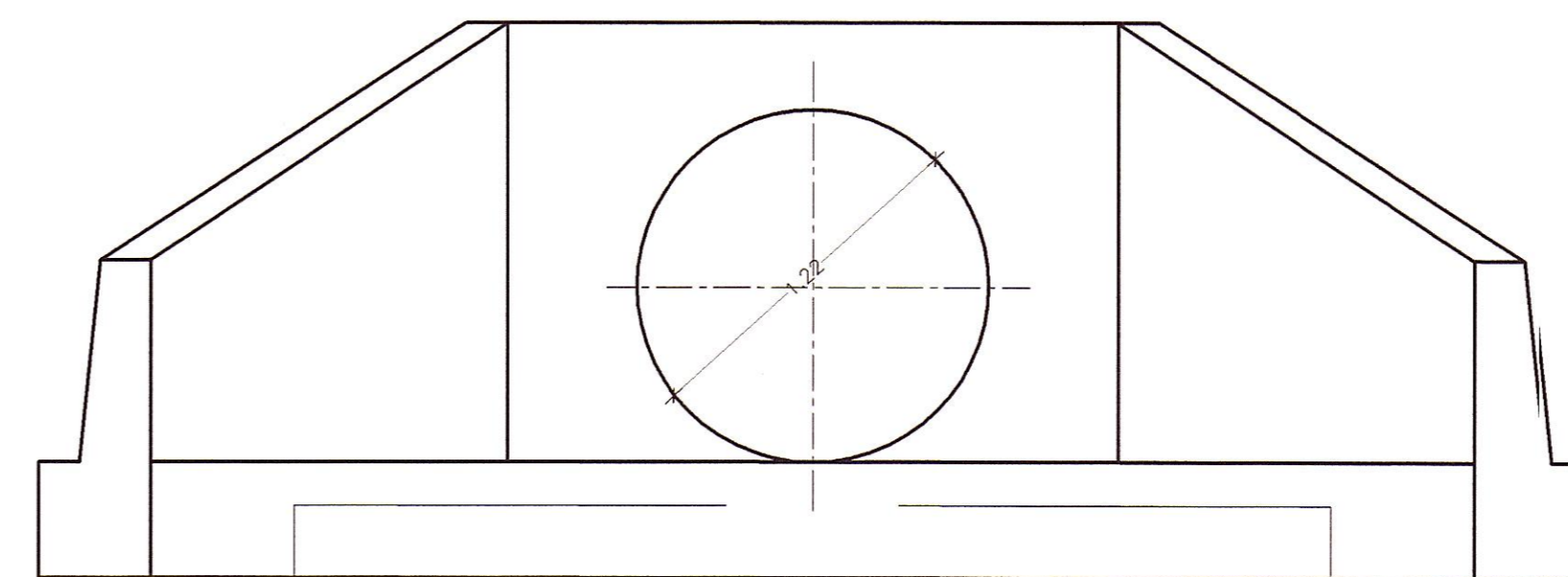
101



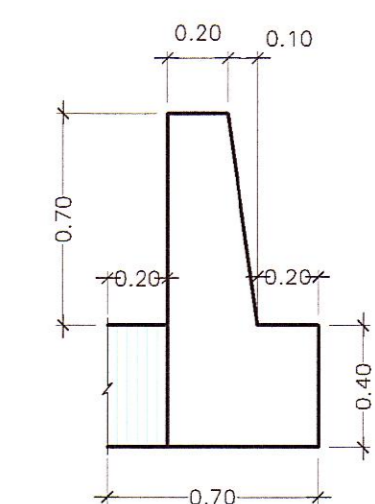
PLANTA



CORTE A-A



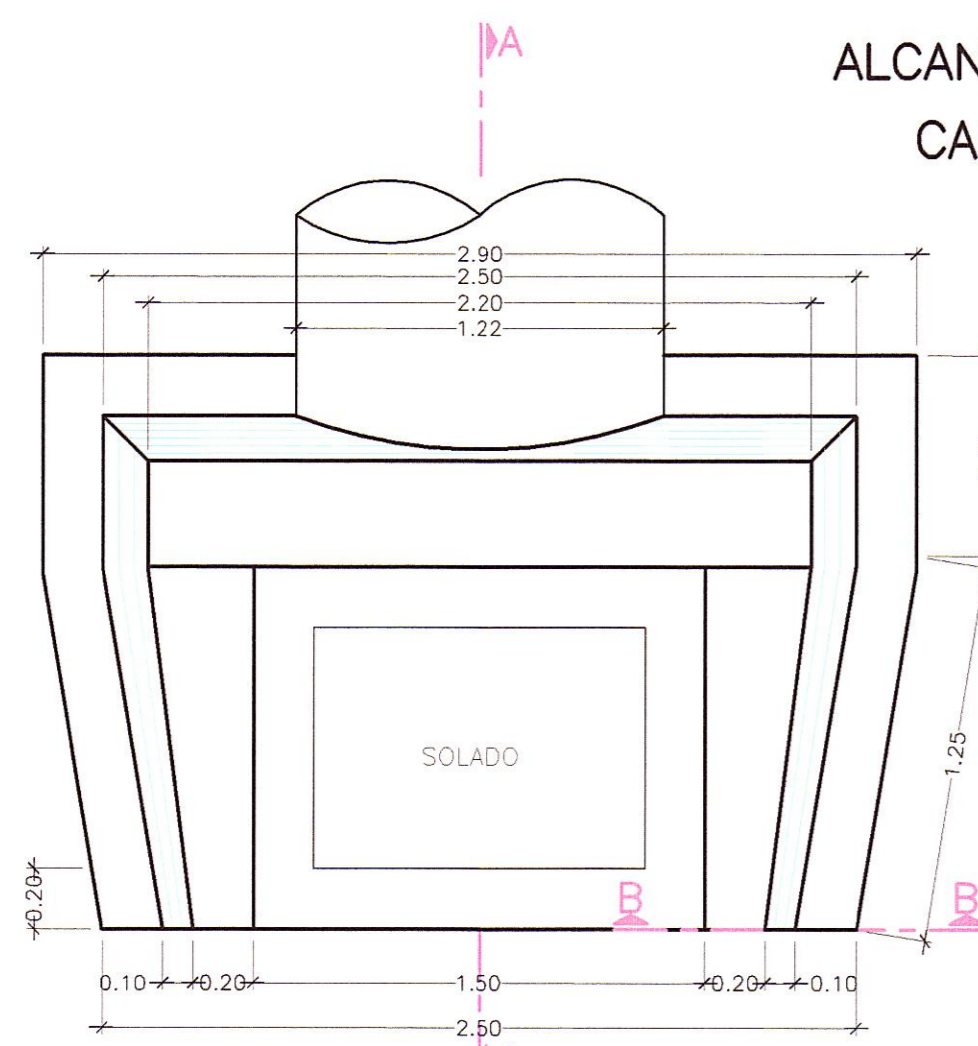
ELEVACION



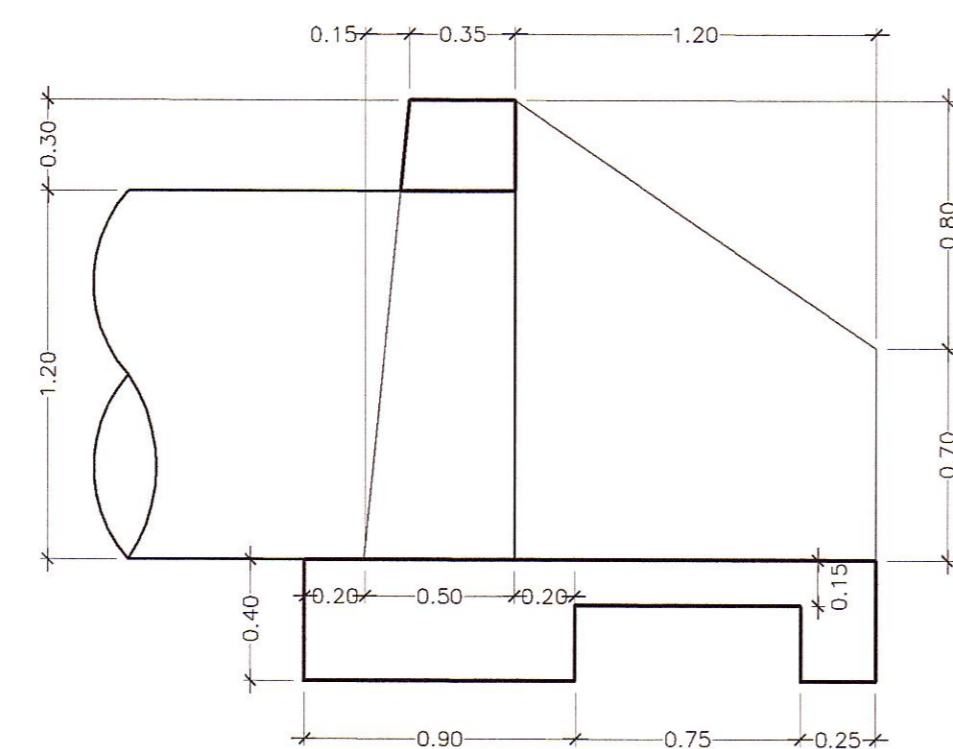
CORTE B-B

ALCANTARILLA TMCØ48"  
CABEZAL RECTO

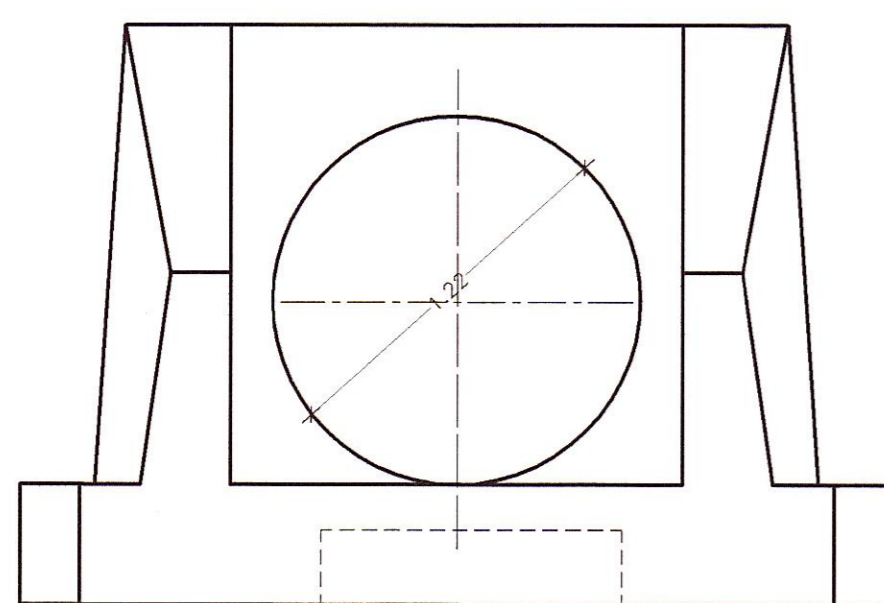
ESC. 1/25



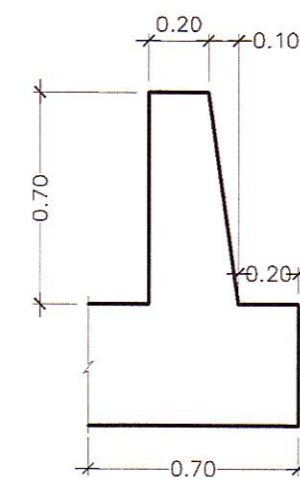
PLANTA



CORTE A-A



ELEVACION



CORTE B-B

ESPECIFICACIONES  
-CONCRETO ALCANTARILLA f'c=175kg/cm2



HOB CONSULTORES S.A.  
ING. WILMAN RONI VENEROS GUTIERREZ  
Esp. HIDROLOGIA E HIDRAULICA  
CIP Nº 57572

HOB CONSULTORES S.A.  
ING. CESAR ESTEBAN GUEVARA MALPARTIDA  
NIVE DE ESTUDIO  
CIP Nº 54358

REVISIONES		
Nº	FECHA	DESCRIPCIÓN