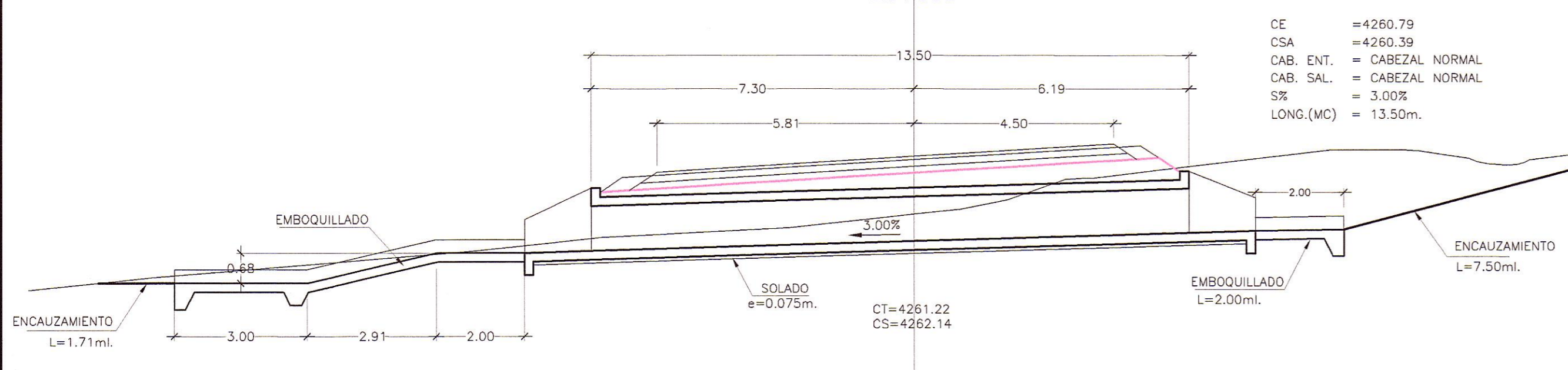
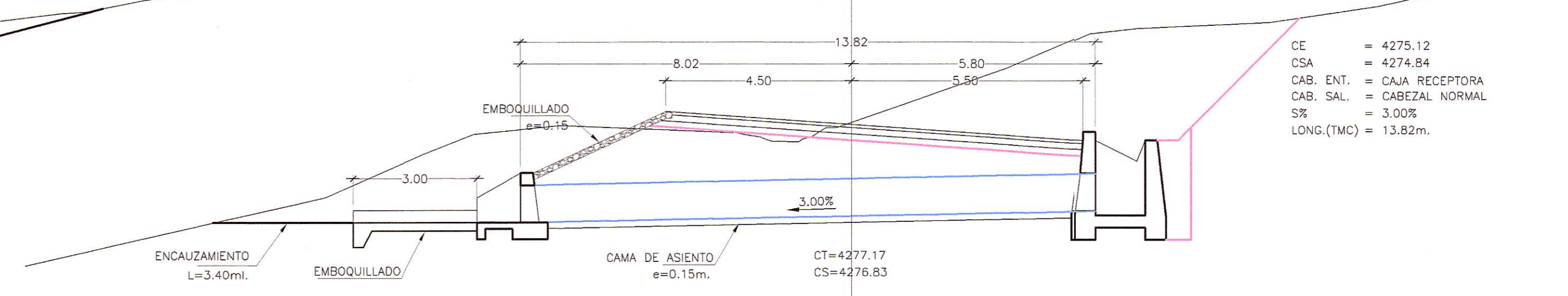


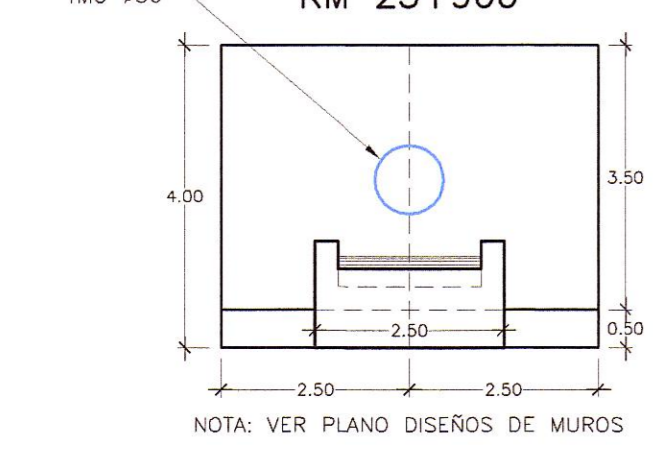
ALCANTARILLA TIPO MC 1.00x1.00
PROYECTAR
26+390



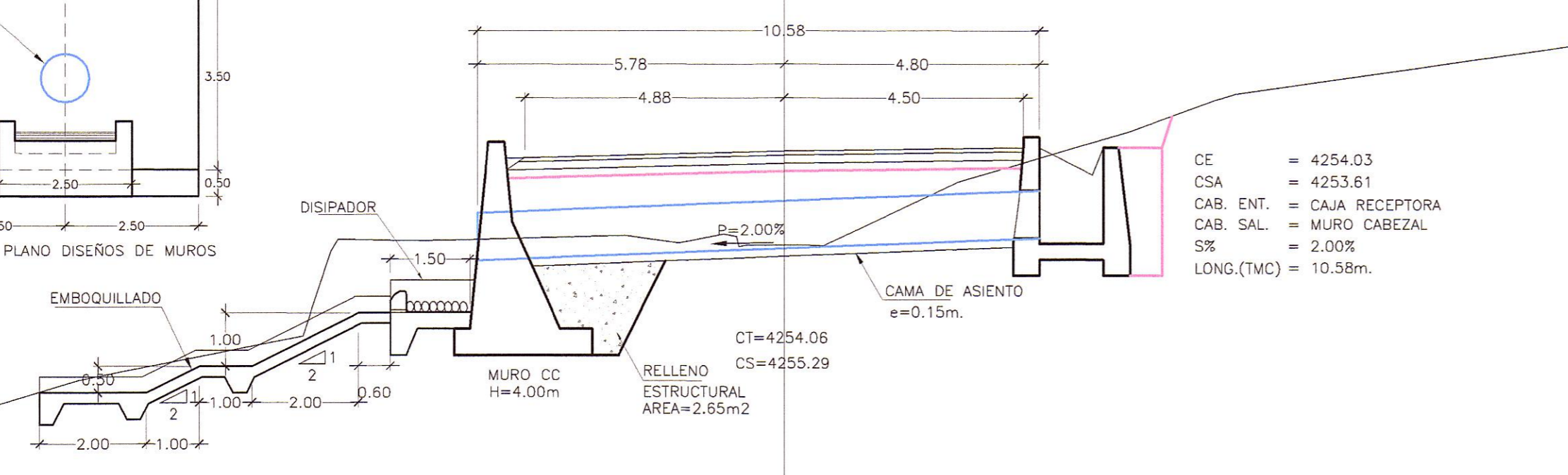
ALCANTARILLA TIPO TMC ø36"
PROYECTAR
27+110



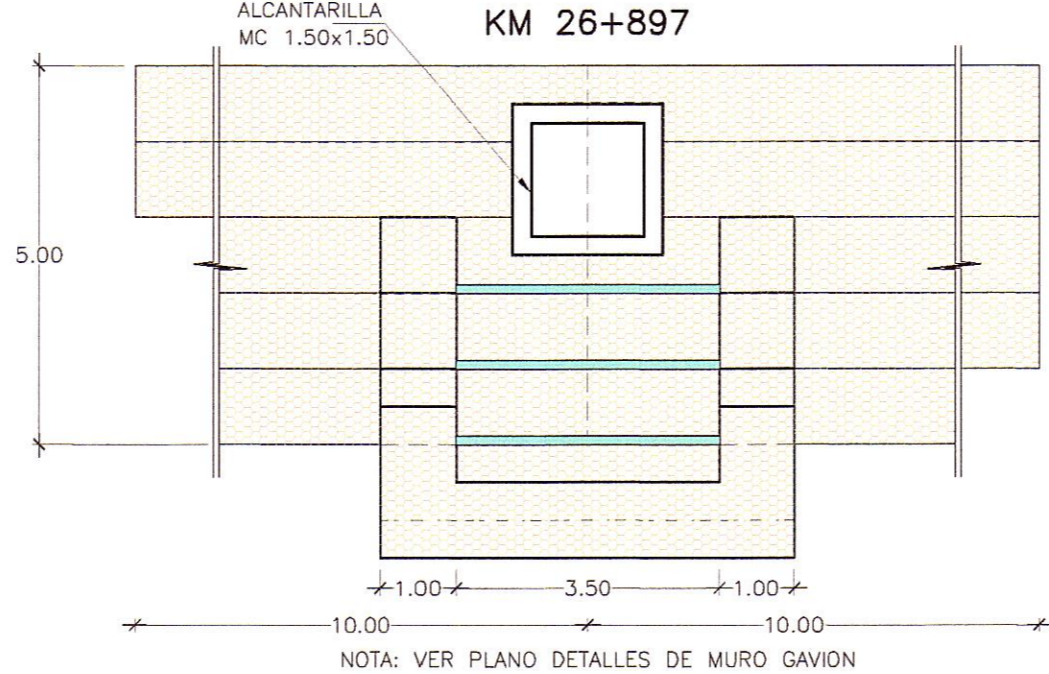
ELEVACION REFERENCIAL
MURO CABEZAL
KM 25+900



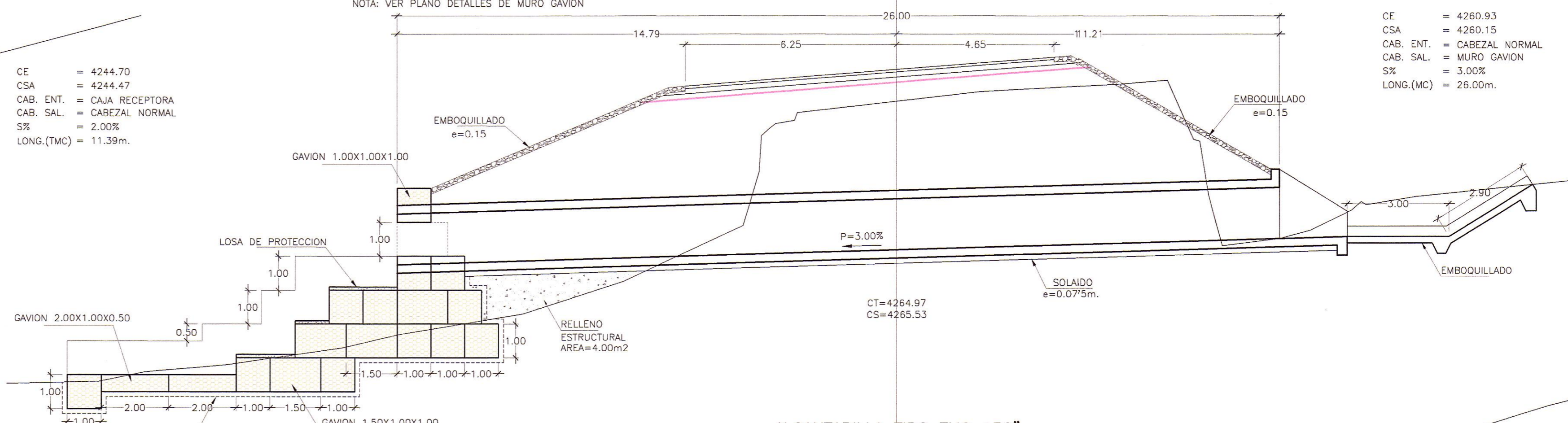
ALCANTARILLA TIPO TMC ø 36"
PROYECTAR
KM 25+900



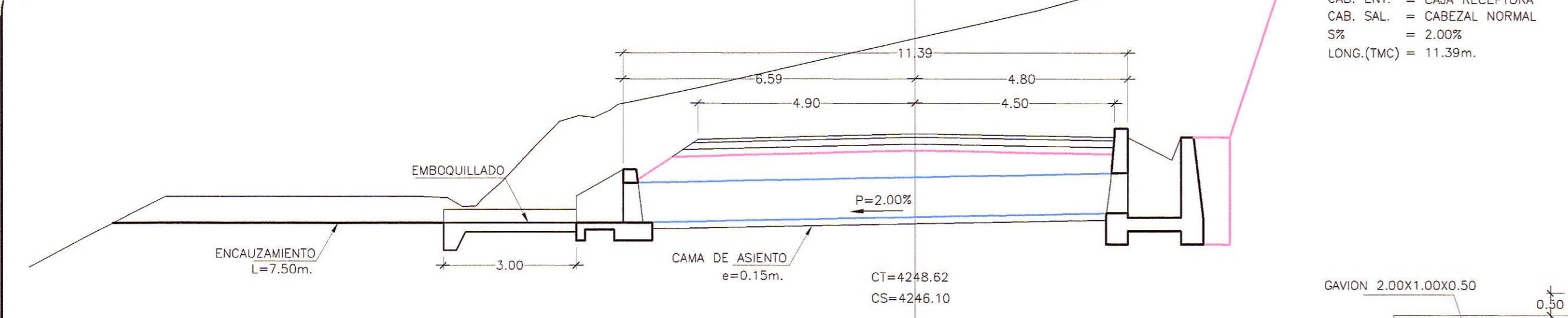
ELEVACION REFERENCIAL
MURO GAVION
KM 26+897



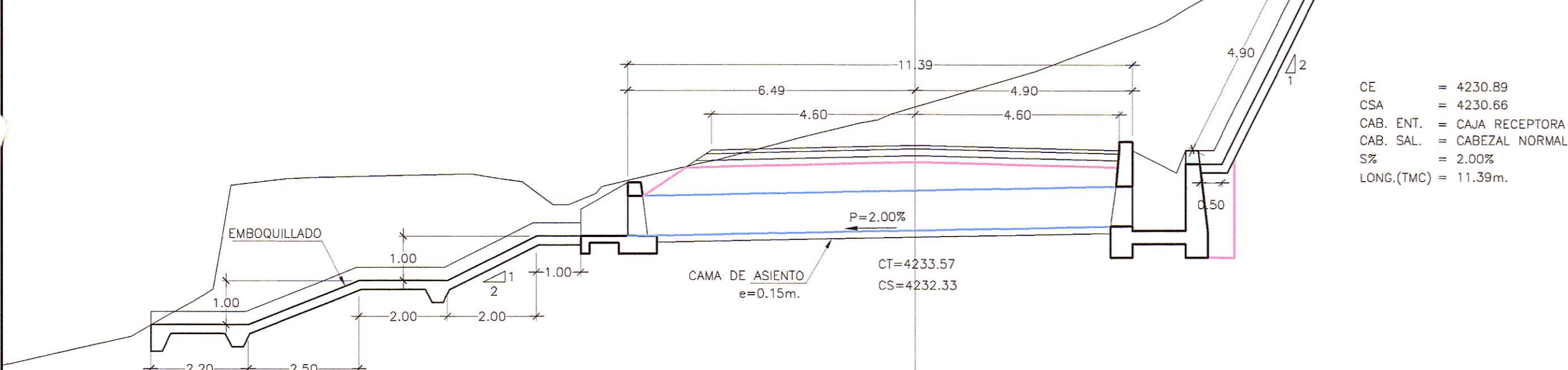
ALCANTARILLA TIPO MC 1.50x1.50m
REEMPLAZAR
26+897
ESVIAJE 75'



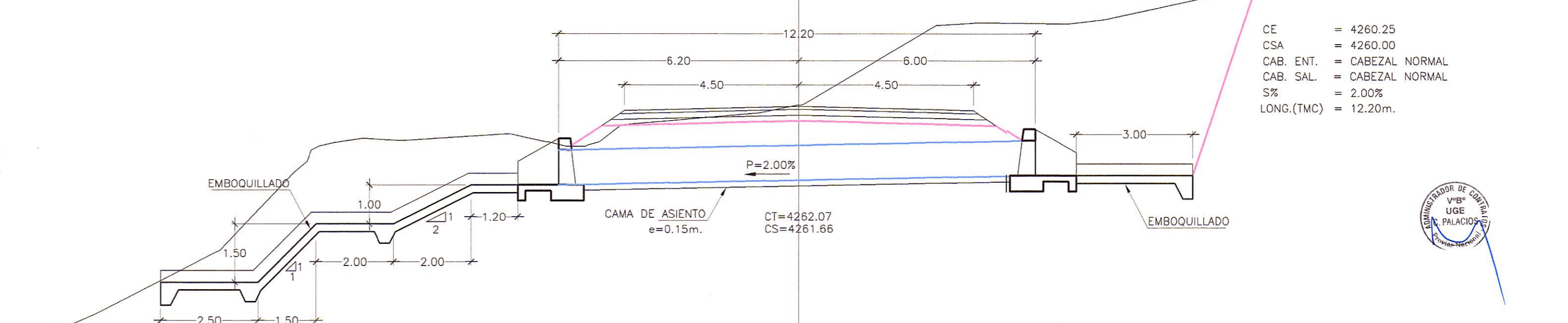
ALCANTARILLA TIPO TMC ø 36"
PROYECTAR
KM 25+700



ALCANTARILLA TIPO TMC ø 36
REEMPLAZAR
ESVIAJE 78'
KM 25+449



ALCANTARILLA TIPO TMC ø36"
REEMPLAZAR
26+754



HOB CONSULTORES S.A.
ING. WILMAN RONI VENEROS GUTIERREZ
ESP. HIDROLOGIA E HIDRAULICA
CIP Nº 97416

HOB CONSULTORES S.A.
ING. PEDRO ERICSON GARCIA MALDONADO
ESP. DE ESTUDIOS
CIP Nº 54328

REVISIONES		
Nº	FECHA	DESCRIPCION