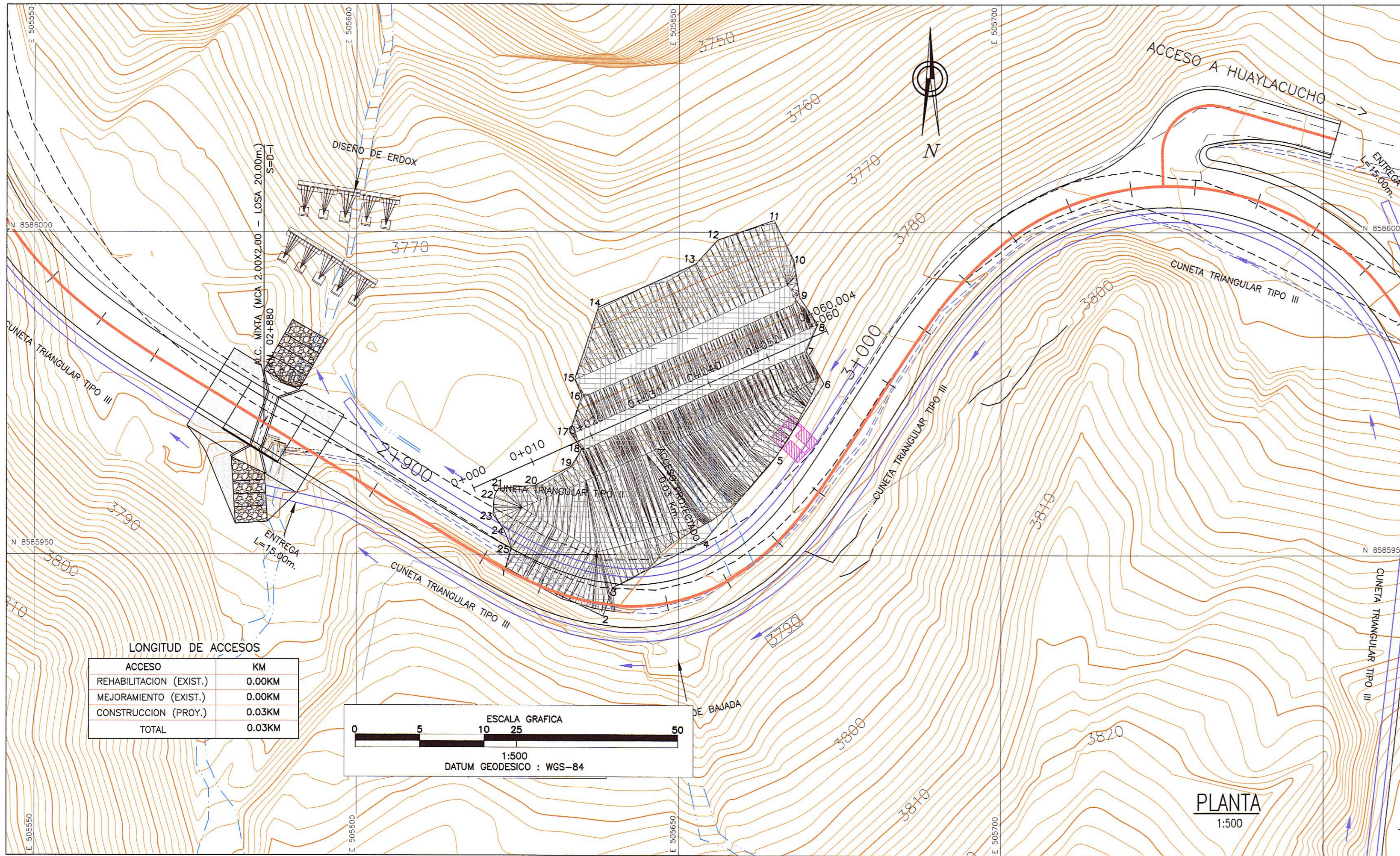
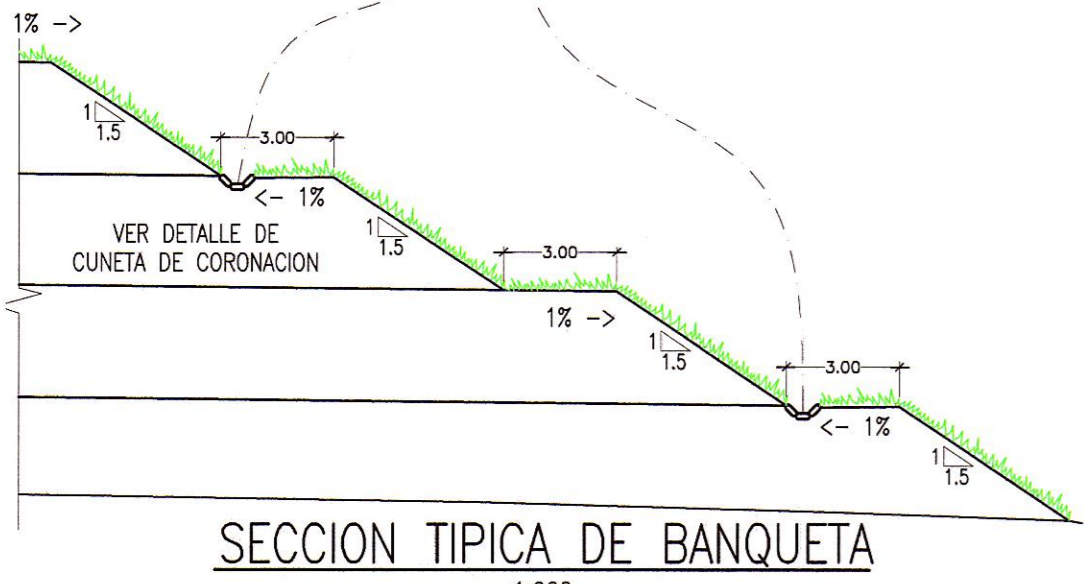
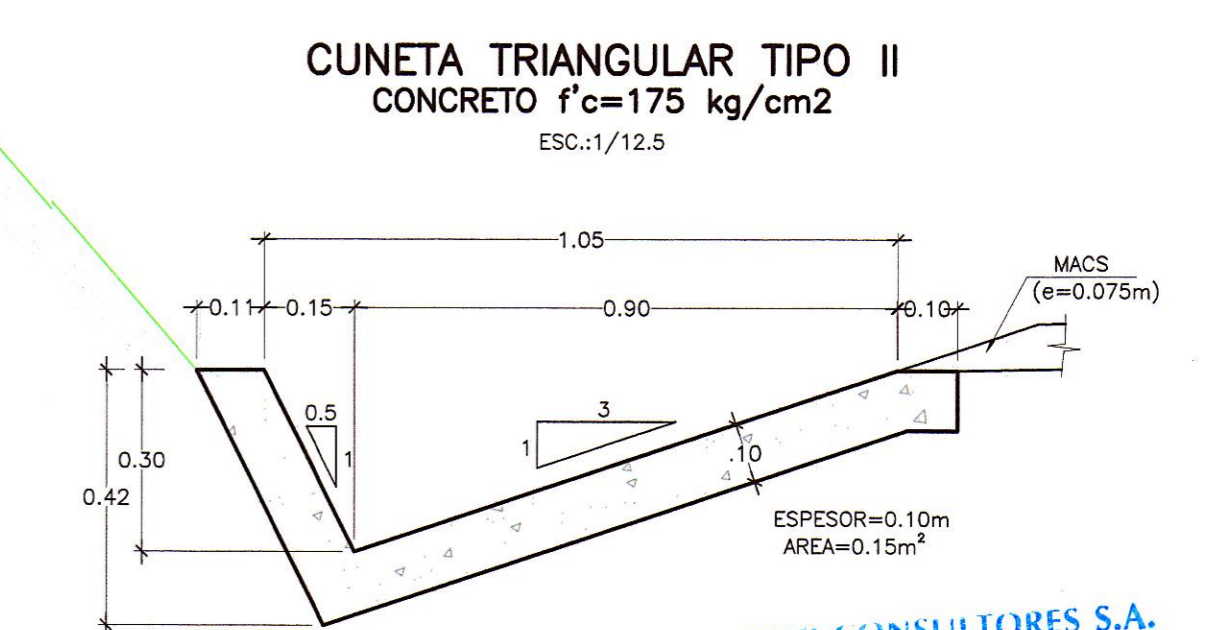
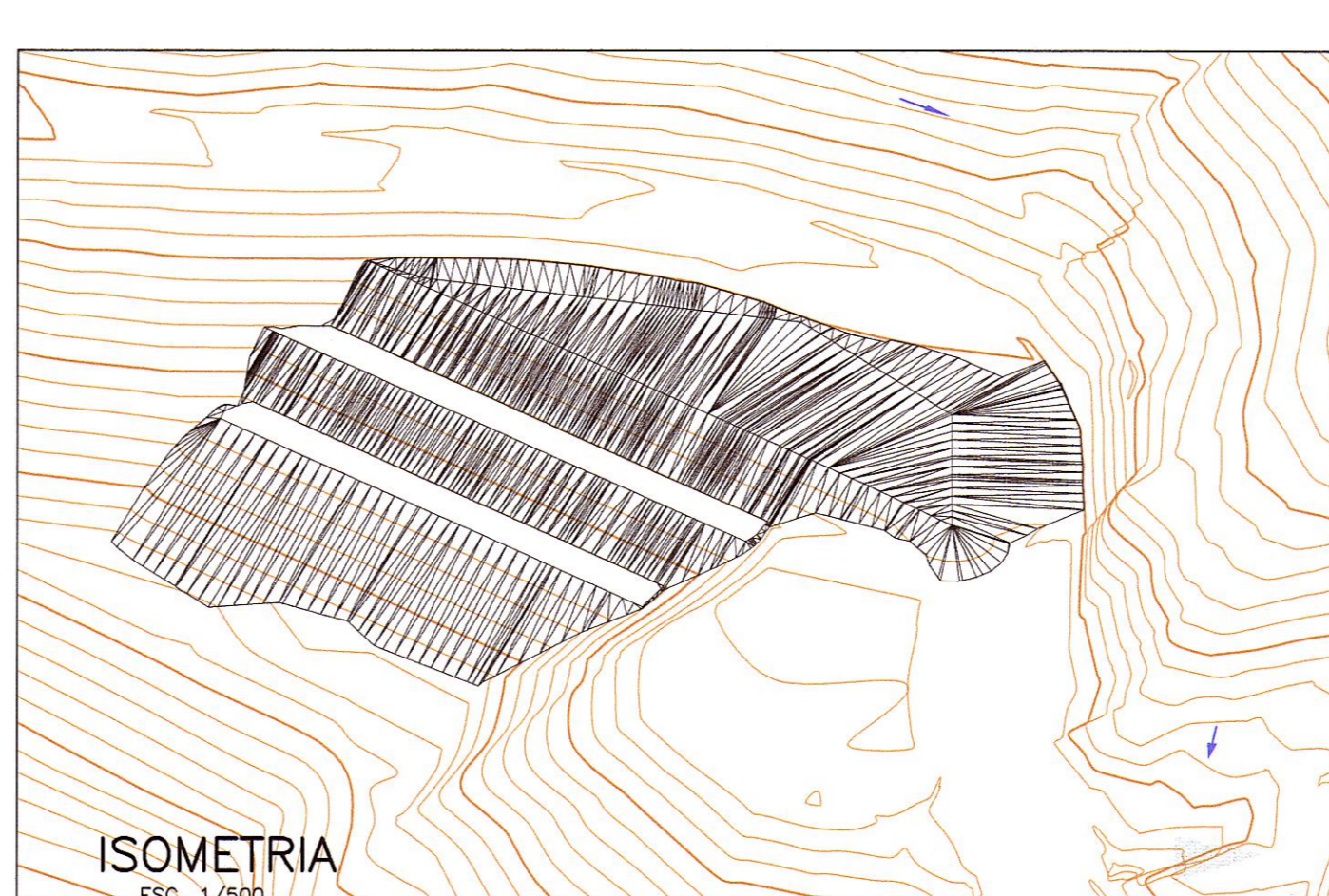
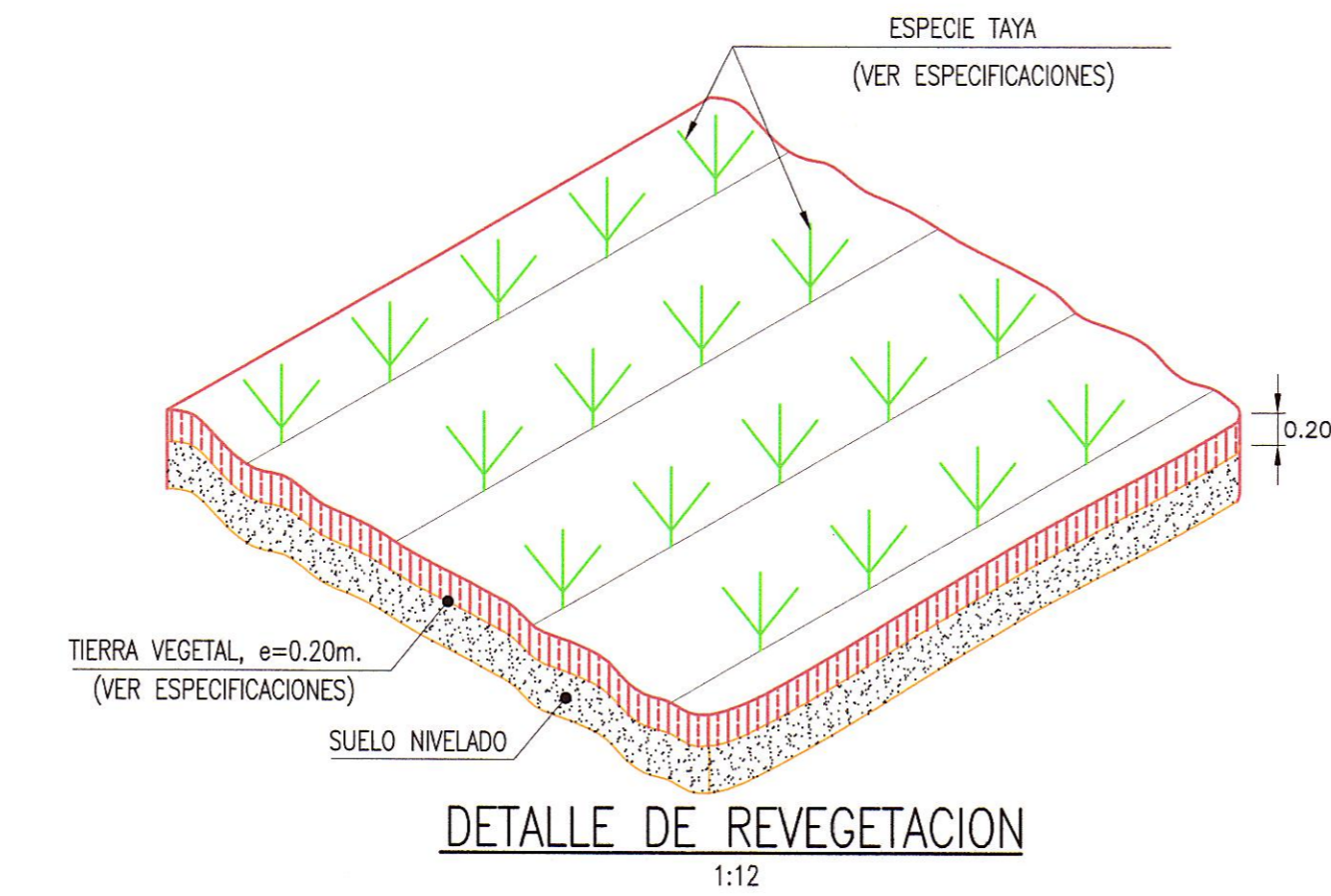
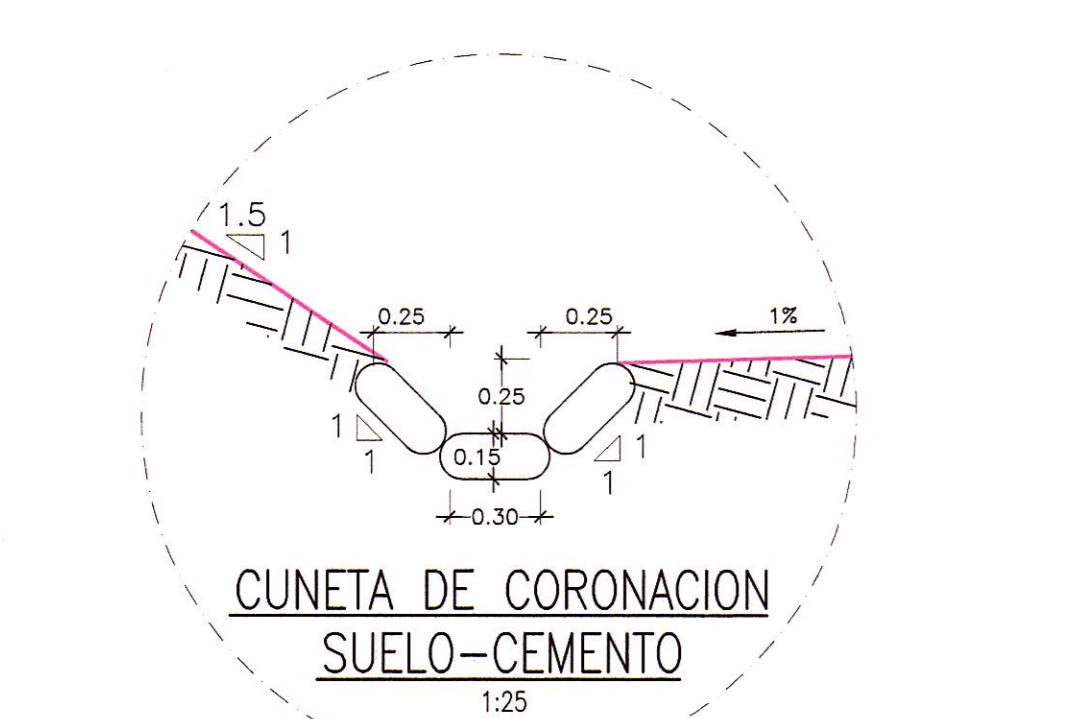
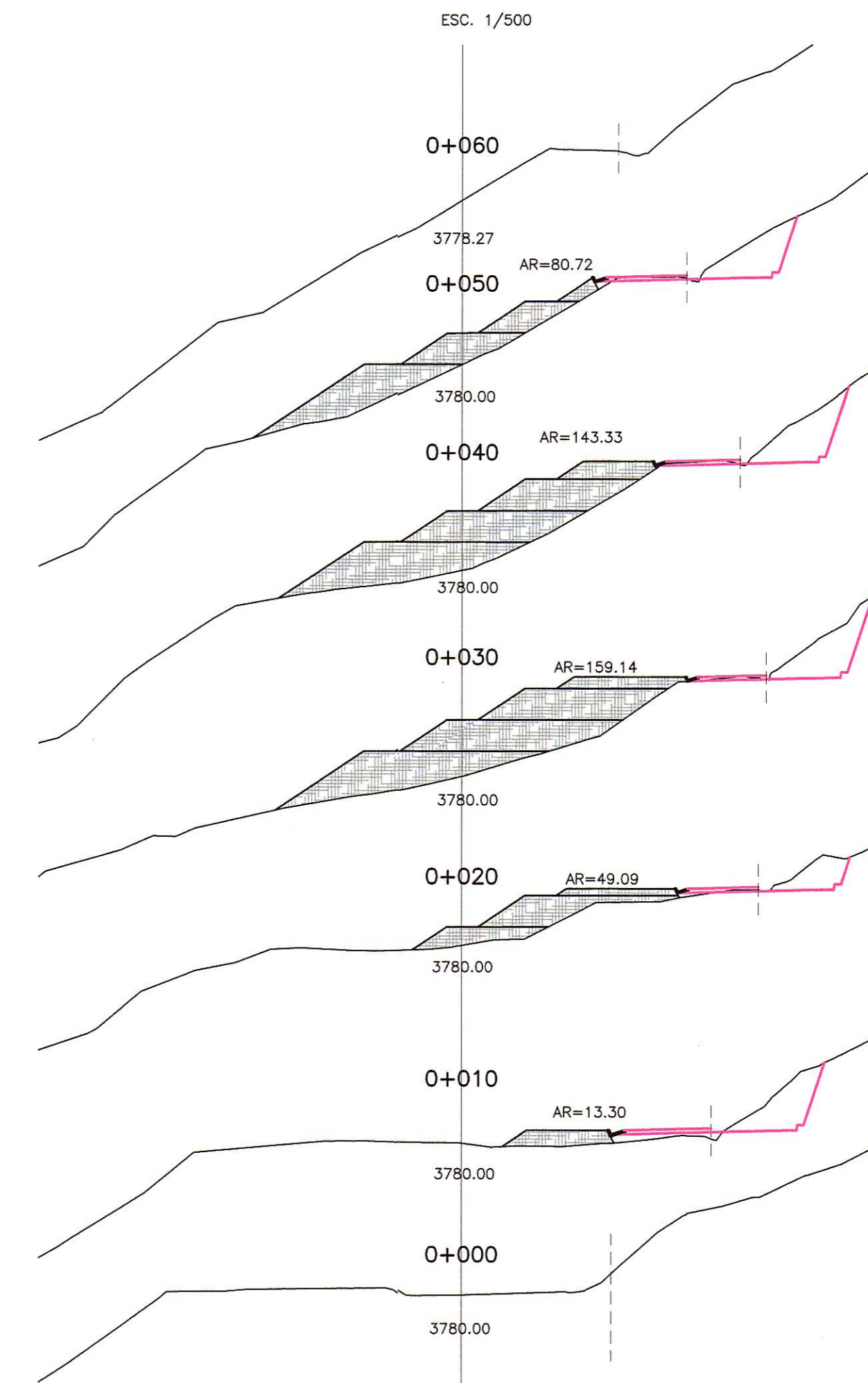


DEPOSITO DE MATERIAL EXCEDENTE
D.M.E. "Km 02+965"
LADO IZQ.



SECCIONES TRANSVERSALES



D.M.E.
PERIMETRO: 179.28 ml
AREA: 1659.07 m²

PV	NORTE	ESTE
1	8585963.668	505614.781
2	8585950.388	505637.331
3	8585951.955	505652.873
4	8585985.619	505680.554
5	8586002.836	505654.817
6	8585992.598	505631.818

PROGRESIVAS	AREA m ²	VOLUMEN m ³
00+010	13.30	
00+020	49.09	311.95
00+030	159.14	1041.15
00+040	143.33	1512.35
00+050	80.72	1120.25
TOTAL		3985.70

NOTA: SEGUN MODELAMIENTO EL VOLUMEN TOTAL = 4262.00m³

HOB CONSULTORES S.A.
ING. CARLOS BRUNEL URQUIGUA MAYA
Esp. TOPOGRAFIA, TRAZO Y DISEÑO VIAL
CIP N° 81237

LEYENDA

PLANTA :

- EJE PROYECTADO
- CARRETERA EXISTENTE
- CURVA MAYOR
- CURVA MENOR
- CASA

MATERIAL EXCEDENTE :

- VERTICE DE POLIGONAL
- AREA DE D.M.E.