

ELEMENTOS DE CURVAS

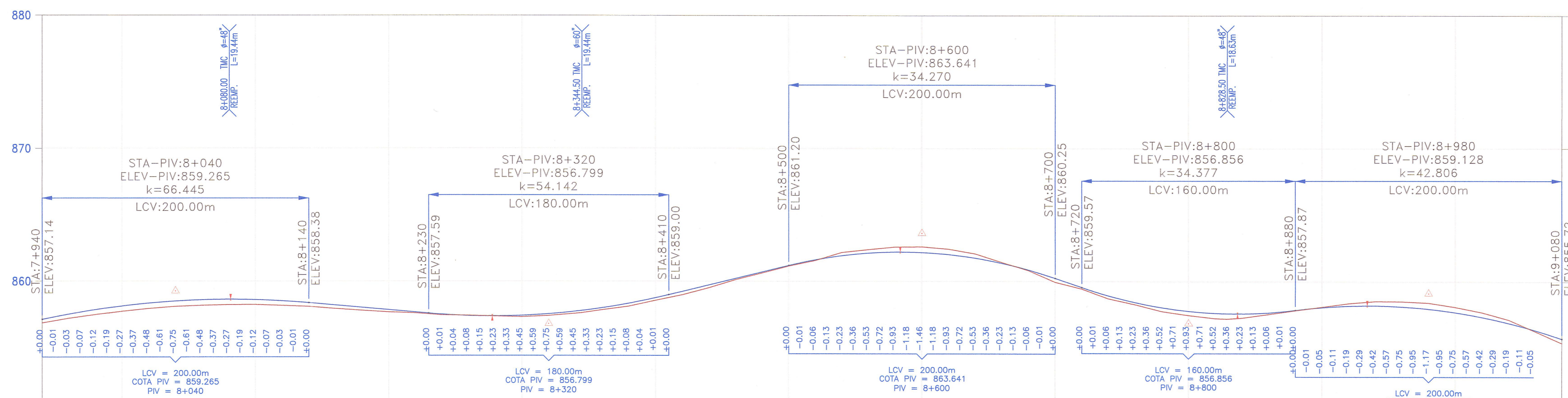
N°	SEN	ANGULO			RADIO	T	LC	EX.	PC / TS	SC	PI	CS	PT / ST	COORDENADAS PC/TS		COORDENADAS SC		COORDENADAS PI		COORDENADAS CS		COORDENADAS PT/ST	
		Grad	Min	Seg										Norte	Este	Norte	Este	Norte	Este	Norte	Este	Norte	Este
PP-12	I	00	02	36.44	Quiebre						08+071.28							9,324,661.330	268,560.527				
PP-13	D	00	12	24.04	Quiebre						08+609.18							9,324,148.651	268,397.774				
PP-14	D	00	06	30.55	Quiebre						09+013.90							9,323,763.340	268,273.923				

BM-8.0  
857.267  
Km.08+007, Lado Der a 7.40m.  
Sobre Hito de Concreto

BM-8.5  
861.172  
Km.08+496, Lado Der a 12.00m.  
Sobre Hito de Concreto

BM-9.0  
857.726  
Km.09+030, Lado Izq a 7.00m.  
Sobre Hito de Concreto

PERFIL ESCALAS  
HORIZONTAL = 1/2000  
VERTICAL = 1/200



PENDIENTES	COTA DE TERRENO	COTA DE SUBRASANTE	ALINEAMIENTO	KILOMETRAJE
2.129% en 270.0mts	857.136, 856.868, 857.532, 857.208, 857.867, 857.488, 858.143, 857.738, 858.358, 857.948, 858.513, 858.108, 858.607, 858.188, 858.642, 858.238, 858.616, 858.248, 858.530, 858.178, 858.384, 858.098, 858.208, 857.938, 858.032, 857.808, 857.856, 857.677, 857.680, 857.607, 857.513, 857.457, 857.410, 857.427, 857.382, 857.367, 857.427, 857.317, 857.547, 857.407, 857.740, 857.577, 858.007, 857.847, 858.348, 858.117, 858.731, 859.514, 860.220, 860.124, 860.708, 860.634, 861.197, 861.144, 861.628, 861.574, 861.941, 862.178, 862.138, 862.398, 862.218, 862.598, 862.182, 862.608, 862.029, 862.438, 868.950, 858.722, 858.446, 858.282, 858.058, 857.762, 857.787, 857.462, 857.632, 857.232, 857.594, 857.272, 857.671, 857.552, 857.866, 857.842, 858.071, 858.102, 858.184, 858.372, 858.202, 858.532, 858.128, 858.512, 857.960, 858.412, 857.688, 858.102, 857.343, 857.692, 856.895, 857.142, 856.353, 856.274, 855.717, 855.394	857.136, 856.868, 857.532, 857.208, 857.867, 857.488, 858.143, 857.738, 858.358, 857.948, 858.513, 858.108, 858.607, 858.188, 858.642, 858.238, 858.616, 858.248, 858.530, 858.178, 858.384, 858.098, 858.208, 857.938, 858.032, 857.808, 857.856, 857.677, 857.680, 857.607, 857.513, 857.457, 857.410, 857.427, 857.382, 857.367, 857.427, 857.317, 857.547, 857.407, 857.740, 857.577, 858.007, 857.847, 858.348, 858.117, 858.731, 859.514, 860.220, 860.124, 860.708, 860.634, 861.197, 861.144, 861.628, 861.574, 861.941, 862.178, 862.138, 862.398, 862.218, 862.598, 862.182, 862.608, 862.029, 862.438, 868.950, 858.722, 858.446, 858.282, 858.058, 857.762, 857.787, 857.462, 857.632, 857.232, 857.594, 857.272, 857.671, 857.552, 857.866, 857.842, 858.071, 858.102, 858.184, 858.372, 858.202, 858.532, 858.128, 858.512, 857.960, 858.412, 857.688, 858.102, 857.343, 857.692, 856.895, 857.142, 856.353, 856.274, 855.717, 855.394	PP-12-I R=0.00 Δ=0°02'36"	07+940

**LEYENDA :**

- PROG. TIPO DIMEN (E) O PROYECTADA (P) LONGITUD
- SEÑALES INFORMATIVAS
- POSTES KILOMETRICOS
- SEÑALES REGLAMENTARIAS
- SEÑALES PREVENTIVAS
- CUNETAS EXISTENTES (E) O PROYECTADA (P)
- GUARDAVIA
- EJE PROYECTADO
- BORDE PROYECTADO
- CARRIL DE ASCENSO
- EJE ACCESOS
- BORDE ACCESOS
- BORDE CARRETERA EXISTENTE
- CERCO
- TORRE ALTA TENSION
- POSTE DE LUZ
- BUZON
- SEÑAL