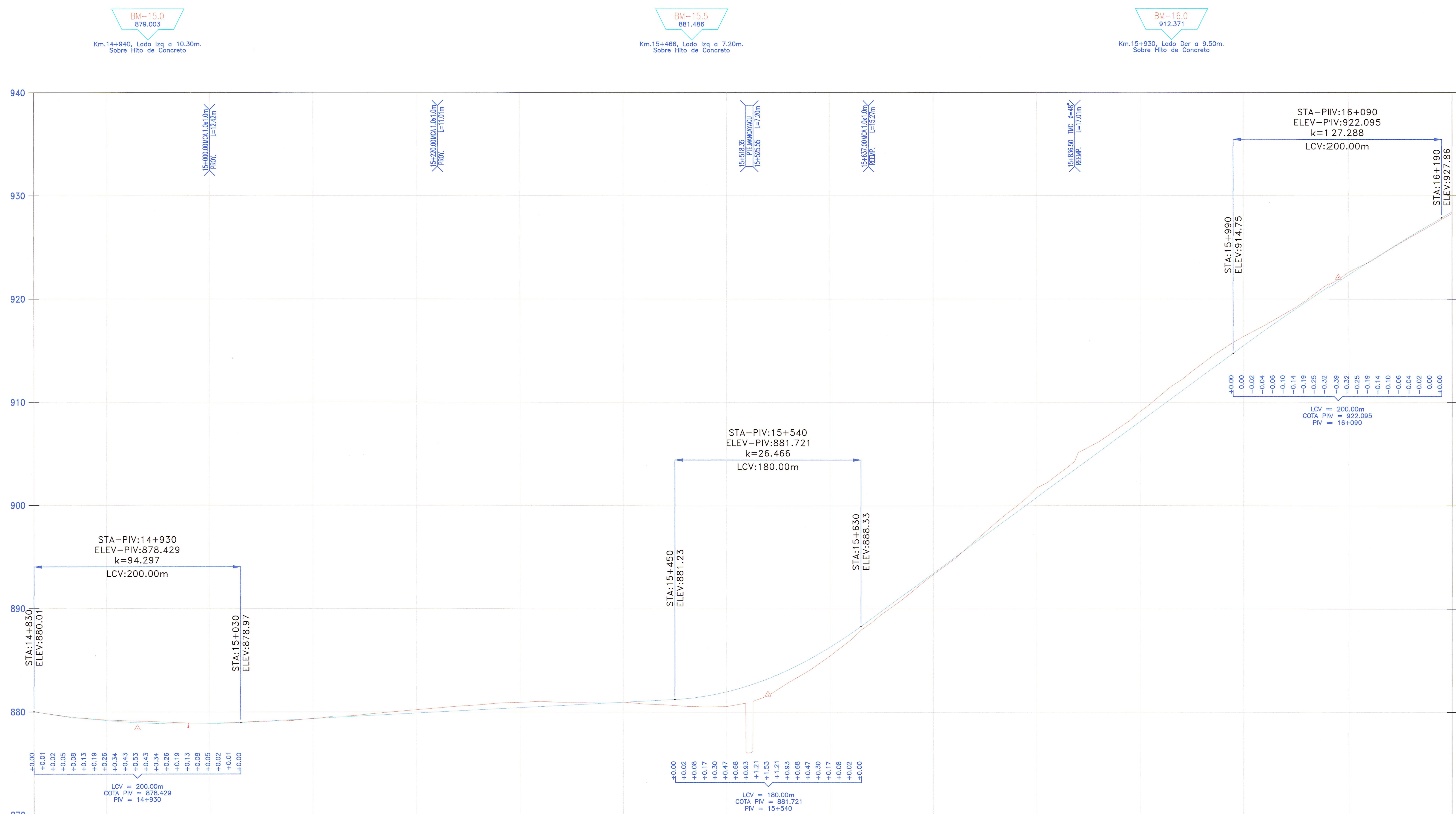
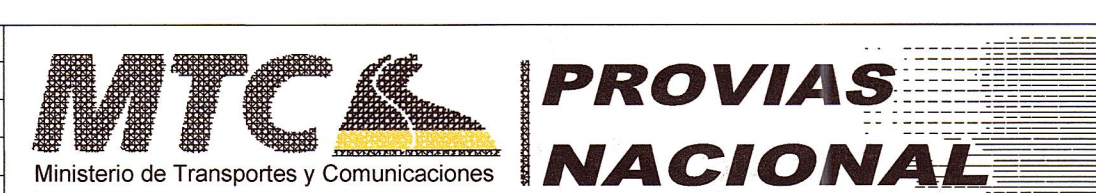


PERFIL  
ESCALAS  
HORIZONTAL = 1/2000  
VERTICAL = 1/200



PENDIENTES	-1.581% en 450.0mts	0.540% en 610.0mts	7.341% en 550.0mts	5.769% en 533.0mts									
COTA DE TERRENO	880.010, 880.021, 879.857, 879.866, 879.583, 879.546, 879.352, 879.372, 879.163, 879.222, 879.016, 879.142, 878.912, 879.072, 878.850, 879.005, 878.831, 878.915, 878.854, 878.905, 878.920, 878.945, 879.022, 879.045, 879.130, 879.105, 879.238, 879.155, 879.346, 879.335, 879.454, 879.575, 879.562, 879.638, 879.670, 879.848, 879.778, 880.028, 879.886, 880.198, 879.994, 880.378, 880.102, 880.548, 880.210, 880.688, 880.317, 880.858, 880.425, 880.938, 880.533, 881.028, 880.641, 880.948, 880.749, 880.968, 880.857, 880.962, 880.965, 880.972, 881.073, 880.792, 881.181, 880.722, 881.308, 880.572, 881.567, 880.512, 881.977, 880.549, 882.538, 876.057, 883.251, 881.599, 884.114, 882.883, 885.129, 884.033, 886.295, 885.433, 887.612, 886.987, 889.061, 888.657, 890.529, 890.193, 891.998, 891.743, 893.466, 893.353, 894.934, 894.818, 896.402, 896.558, 897.870, 898.318, 899.338, 899.915, 900.806, 901.715, 902.275, 903.005, 903.743, 905.132, 905.211, 906.182, 906.679, 907.562, 908.147, 909.123, 909.615, 910.703, 911.083, 912.173, 912.552, 913.738, 914.020, 915.148, 915.484, 916.368, 916.921, 917.410, 918.326, 918.590, 919.700, 919.830, 921.042, 921.340, 922.353, 922.622, 923.633, 923.592, 924.881, 924.842, 926.098, 925.999, 927.283, 927.139, 928.441, 928.289												
COTA DE SUBRASANTE	880.010, 880.021, 879.857, 879.866, 879.583, 879.546, 879.352, 879.372, 879.163, 879.222, 879.016, 879.142, 878.912, 879.072, 878.850, 879.005, 878.831, 878.915, 878.854, 878.905, 878.920, 878.945, 879.022, 879.045, 879.130, 879.105, 879.238, 879.155, 879.346, 879.335, 879.454, 879.575, 879.562, 879.638, 879.670, 879.848, 879.778, 880.028, 879.886, 880.198, 879.994, 880.378, 880.102, 880.548, 880.210, 880.688, 880.317, 880.858, 880.425, 880.938, 880.533, 881.028, 880.641, 880.948, 880.749, 880.968, 880.857, 880.962, 880.965, 880.972, 881.073, 880.792, 881.181, 880.722, 881.308, 880.572, 881.567, 880.512, 881.977, 880.549, 882.538, 876.057, 883.251, 881.599, 884.114, 882.883, 885.129, 884.033, 886.295, 885.433, 887.612, 886.987, 889.061, 888.657, 890.529, 890.193, 891.998, 891.743, 893.466, 893.353, 894.934, 894.818, 896.402, 896.558, 897.870, 898.318, 899.338, 899.915, 900.806, 901.715, 902.275, 903.005, 903.743, 905.132, 905.211, 906.182, 906.679, 907.562, 908.147, 909.123, 909.615, 910.703, 911.083, 912.173, 912.552, 913.738, 914.020, 915.148, 915.484, 916.368, 916.921, 917.410, 918.326, 918.590, 919.700, 919.830, 921.042, 921.340, 922.353, 922.622, 923.633, 923.592, 924.881, 924.842, 926.098, 925.999, 927.283, 927.139, 928.441, 928.289												
ALINEAMIENTO	PI-14-I R=100.00 Δ=34°32'53"	PI-16-I R=110.00 PI-15-D Δ=30°45'29"	PI-16-I R=110.00 PI-18-D Δ=30°45'29"	PI-17-I R=60.00 Δ=88°41'00"	PI-18-D R=60.00 Δ=65°55'46"								
KILOMETRAJE	14+830	900	100	200	300	400	500	600	700	800	900	100	16+200

REVISIÓN:	



CONTRATO DE CONSULTORIA DE OBRA  
N° 066-2010-MTC/20

TITULO DEL PROYECTO  
ELABORACION DEL ESTUDIO DE FACTIBILIDAD Y DEFINITIVO DE LA CARRETERA  
RODRIGUEZ DE MENDOZA - EMPALME RUTA PE-5N (LA CALZADA), TRAMO: SELVA ALEGRE - LA CALZADA

DESIGNACION :  
PLANTA Y PERFIL LONGITUDINAL  
Km. 14+830 Km. 16+200



JEFE PROYECTO :	E. COX CASSINELLI	APROBADO :	H. CABANILLAS	ESCALA :	INDICADA	PLANO N°	PL
ING. TRAZO :	A. CHOQUE LEON	DIBUJO :	H. CABANILLAS	FECHA :	06/12		16A

JNR CONSULTORES S.A.  
Ing. Andrés M. Choque León  
Superintendente Técnico  
CIP: 65762