

ELEMENTOS DE CURVAS

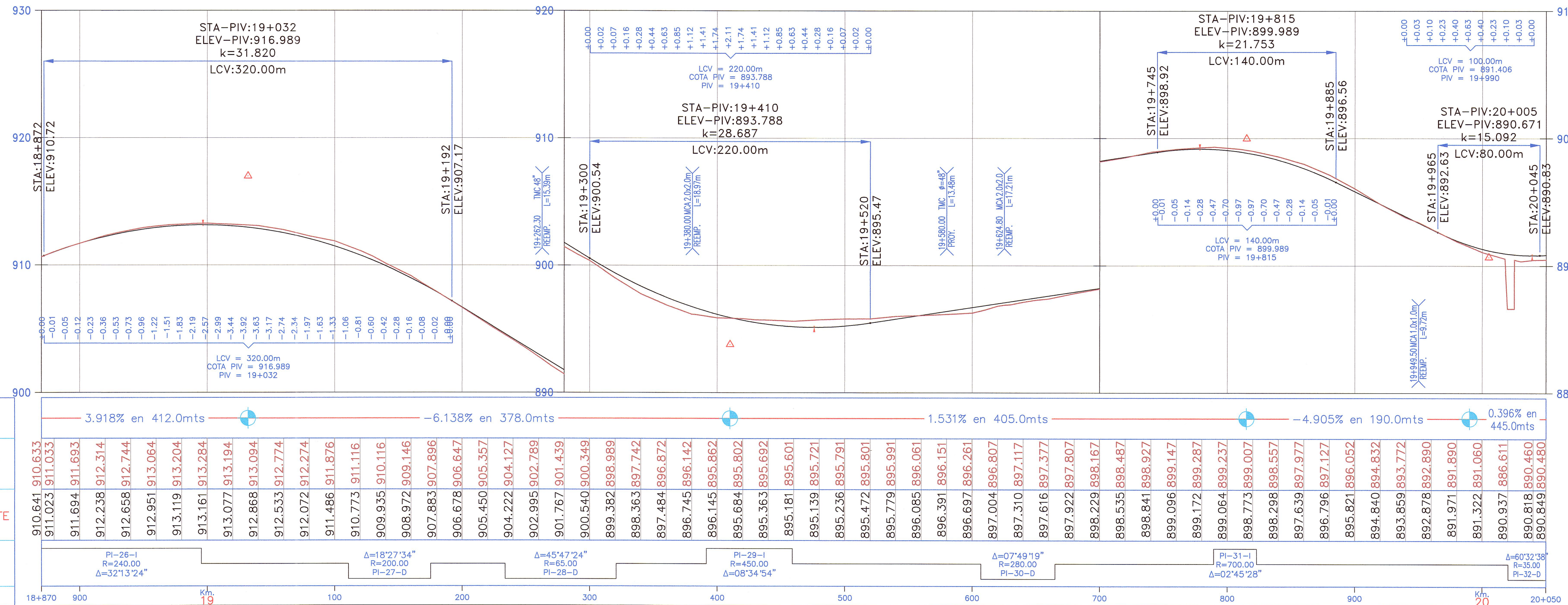
N°	SEN	ANGULO			RADIO	T	LC	EX.	SOBRE ANCHO	PERALTE (%)	PC / TS	SC	PI	CS	PT / ST	COORDENADAS PC/TS		COORDENADAS SC		COORDENADAS PI		COORDENADAS CS		COORDENADAS PT/ST	
		Grad	Min	Seg												Norte	Este	Norte	Este	Norte	Este	Norte	Este	Norte	Este
PI-26	I	32	13	24.00	240.00	55.971	109.976	6.440	0.50	4.00	18+835.528	18+860.528	18+917.38	18+970.505	18+995.505	9,315.182.806	265,972.067	9,315.158.872	265,979.278	9,315.104.033	265,994.317	9,315.066.304	266,036.861	9,315.049.257	266,055.143
PI-27	D	18	27	33.83	200.00	32.499	64.435	2.623	0.60	4.50	19+110.948		19+143.45	19+175.383	19+175.383	9,314,972.004	266,140.929			9,314,950.256	266,165.079			9,314,921.980	266,181.100
PI-28	D	45	47	24.00	65.00	8.522	16.947	0.556	1.30	7.50	19+233.884	19+268.884	19+279.12	19+285.831	19+320.831	9,314,871.082	266,209.942	9,314,839.310	266,224.351	9,314,831.722	266,232.242	9,314,822.524	266,226.306	9,314,788.291	266,219.580
PI-29	I	08	34	54.27	450.00	33.764	67.401	1.265	0.30	3.00	19+391.671		19+425.43	19+459.072	19+459.072	9,314,720.283	266,199.753			9,314,687.869	266,190.303			9,314,654.408	266,185.796
PI-30	D	07	49	19.00	280.00	9.116	18.225	0.148	0.50	4.00	19+606.951	19+626.951	19+636.10	19+645.178	19+665.178	9,314,507.852	266,186.054	9,314,488.068	266,163.148	9,314,478.967	266,162.163	9,314,470.214	266,159.490	9,314,450.880	266,154.377
PI-31	I	02	45	28.19	700.00	16.850	33.693	0.203	0.30	3.00	19+789.409		19+806.26	19+823.103	19+823.103	9,314,331.162	266,121.190			9,314,314.924	266,116.689			9,314,298.489	266,112.974
PI-32	D	60	32	38.00	35.00	6.051	11.984	0.519	1.80	8.00	20+020.446	20+045.446	20+053.76	20+057.431	20+082.431	9,314,106.000	266,069.468	9,314,082.575	266,061.150	9,314,073.511	266,062.125	9,314,073.854	266,053.015	9,314,063.928	266,030.225

BM-19.0
911.734
Km.18+905, Lado Der a 9.00m.
Sobre Hito de Concreto

BM-19.5
899.125
Km.19+443, Lado Der a 8.00m.
Sobre Vereda de Casa

BM-20.0
894.137
Km.19+950, Lado Izq a 8.00m.
Sobre Hito de Concreto

PERFIL
ESCALAS
HORIZONTAL = 1/2000
VERTICAL = 1/200



ESTACION	18+700	800	19	100	200	300	400	500	600	700	800	900	20+050																																																																																																													
PENDIENTES	3.918% en 412.0mts		-6.138% en 378.0mts			1.531% en 405.0mts			-4.905% en 190.0mts		0.396% en 445.0mts																																																																																																															
COTA DE TERRENO	910.641	910.633	911.023	911.033	911.694	911.693	912.238	912.314	912.658	912.744	912.951	913.064	913.119	913.204	913.161	913.284	913.077	913.194	912.868	913.094	912.533	912.774	912.072	912.274	911.486	911.876	910.773	911.116	909.935	910.116	908.972	909.146	907.883	907.896	906.678	906.647	905.450	905.357	904.222	904.127	902.995	902.789	901.767	901.439	900.540	900.349	899.382	898.989	898.363	897.742	897.484	896.872	896.745	896.142	896.145	895.862	895.684	895.802	895.363	895.692	895.181	895.601	895.139	895.721	895.236	895.791	895.472	895.801	895.779	895.991	896.085	896.061	896.391	896.151	896.697	896.261	897.004	896.807	897.310	897.117	897.616	897.377	897.972	897.807	898.229	898.167	898.535	898.487	898.841	898.927	899.096	899.147	899.172	899.287	899.064	899.237	898.773	899.007	898.298	898.557	897.639	897.977	896.796	897.127	895.821	896.052	894.840	894.832	893.859	893.772	892.878	892.890	891.971	891.890	891.322	891.060	890.837	886.611	890.818	890.460	890.849	890.480
COTA DE SUBRASANTE	910.641	910.633	911.023	911.033	911.694	911.693	912.238	912.314	912.658	912.744	912.951	913.064	913.119	913.204	913.161	913.284	913.077	913.194	912.868	913.094	912.533	912.774	912.072	912.274	911.486	911.876	910.773	911.116	909.935	910.116	908.972	909.146	907.883	907.896	906.678	906.647	905.450	905.357	904.222	904.127	902.995	902.789	901.767	901.439	900.540	900.349	899.382	898.989	898.363	897.742	897.484	896.872	896.745	896.142	896.145	895.862	895.684	895.802	895.363	895.692	895.181	895.601	895.139	895.721	895.236	895.791	895.472	895.801	895.779	895.991	896.085	896.061	896.391	896.151	896.697	896.261	897.004	896.807	897.310	897.117	897.616	897.377	897.972	897.807	898.229	898.167	898.535	898.487	898.841	898.927	899.096	899.147	899.172	899.287	899.064	899.237	898.773	899.007	898.298	898.557	897.639	897.977	896.796	897.127	895.821	896.052	894.840	894.832	893.859	893.772	892.878	892.890	891.971	891.890	891.322	891.060	890.837	886.611	890.818	890.460	890.849	890.480
ALINEAMIENTO	PI-26-I R=240.00 Δ=32°13'24"		PI-27-D R=200.00 Δ=18°27'34"			PI-28-D R=200.00 Δ=45°47'24"			PI-29-I R=450.00 Δ=08°34'54"			PI-30-D R=280.00 Δ=07°49'19"			PI-31-I R=700.00 Δ=02°45'28"			PI-32-D R=35.00 Δ=60°32'38"																																																																																																								
KILOMETRAJE	18+700	800	19	100	200	300	400	500	600	700	800	900	20+050																																																																																																													

JNR CONSULTORES S.A.
Ing. ENRIQUE COX CASSINELLI
Calle Roca de Vergallo 153 - Magdalena del Mar
Teléfono: 462-4440

LEYENDA :

- ALCANTARILLA EXISTENTE (E) O PROYECTADA (P)
- SEÑALES INFORMATIVAS
- POSTES KILOMETRICOS
- SEÑALES REGLAMENTARIAS
- SEÑALES PREVENTIVAS
- CUNETAS EXISTENTES (E) O PROYECTADAS (P)
- GUARDAVIA
- EJE PROYECTADO
- BORDE PROYECTADO
- CARRIL DE ASCENSO
- EJE ACCESOS
- BORDE ACCESOS
- BORDE CARRETERA EXISTENTE
- CERCO
- TORRE ALTA TENSION
- POSTE DE LUZ
- BUZON
- SEÑAL