

CUADRO PUNTOS DE CONTROL GPS

N°	CODIGO	COORDENADAS UTM	
		NORTE	ESTE
1	GPS-9	9'314,06.5.164	266,023.608
2	GPS-10	9'314,004.382	265,886.361

ELEMENTOS DE CURVAS

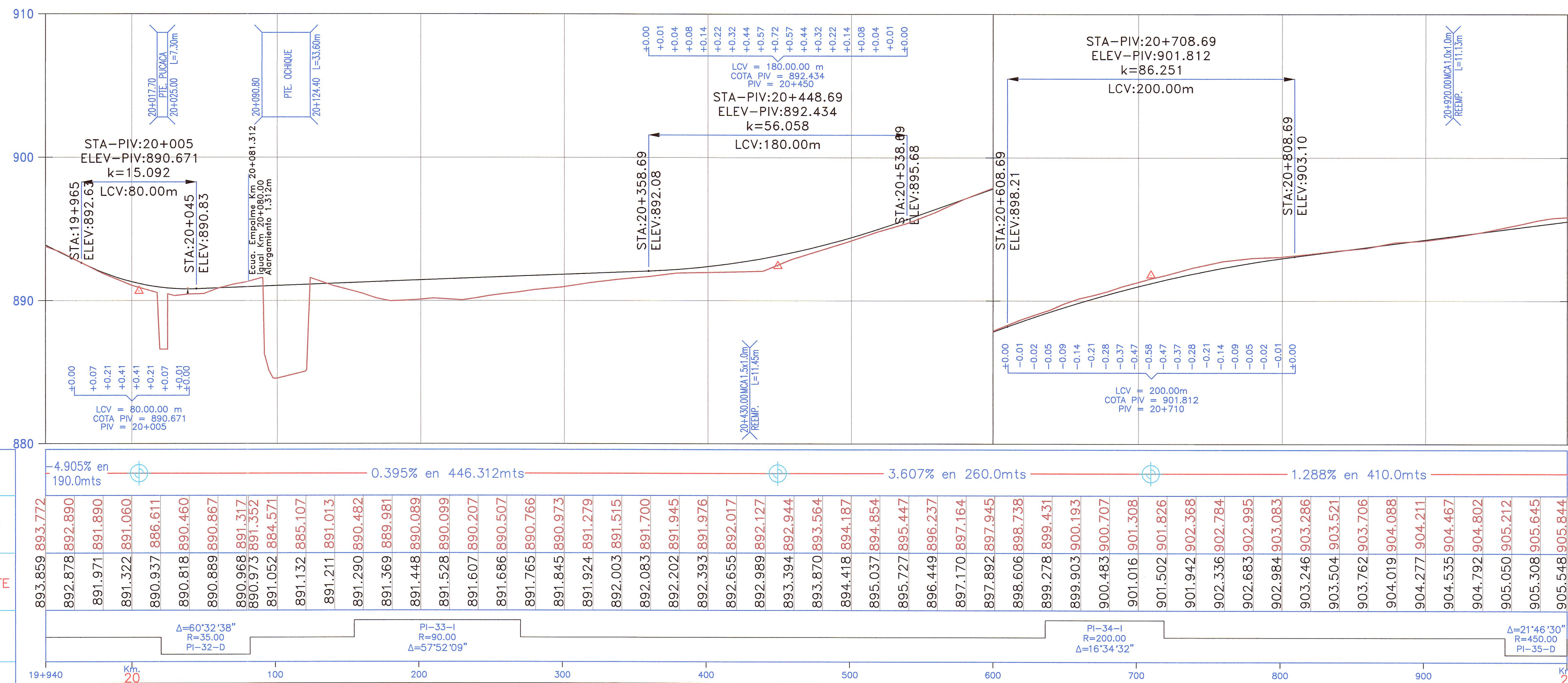
N°	SEN	ANGULO			RADIO	T	LC	EX.	SOBRE ANCHO	PERALTE (%)	PC / TS	SC	PI	CS	PT / ST	COORDENADAS PC/TS		COORDENADAS SC		COORDENADAS PI		COORDENADAS CS		COORDENADAS PT/ST	
		Grad	Min	Seg												Norte	Este	Norte	Este	Norte	Este	Norte	Este	Norte	Este
PI-32	D	60	32	38.00	35.00	6.051	11.984	0.519	1.80	8.00	20+020.446	20+045.446	20+053.76	20+057.431	20+082.431	9,314,106.000	266,069.468	9,314,082.575	266,061.150	9,314,073.511	266,062.125	9,314,073.854	266,053.015	9,314,063.928	266,030.225
PI-33	I	57	52	08.00	90.00	34.506	65.901	6.388	0.90	6.50	20+154.987	20+179.987	20+217.39	20+245.887	20+270.887	9,314,043.054	265,960.736	9,314,034.768	265,937.172	9,314,025.100	265,900.969	9,313,988.686	265,892.131	9,313,964.938	265,884.386
PI-34	I	16	34	32.00	200.00	16.467	32.859	0.677	0.60	4.50	20+636.530	20+661.530	20+678.18	20+694.389	20+719.389	9,313,612.442	265,787.222	9,313,588.212	265,781.083	9,313,572.289	265,776.154	9,313,555.643	265,777.013	9,313,530.647	265,777.001
PI-35	D	21	46	30.00	450.00	86.555	171.021	8.249	0.30	3.00	20+956.892		21+043.45		21+127.913	9,313,293.194	265,781.829			9,313,206.657	265,783.589			9,313,125.642	265,753.121

BM-20.0
894.137
Km.19+950, Lado Izq a 8.00m.
Sobre Hito de Concreto

BM-20.5
894.112
Km.20+480, Lado Der a 14.20m.
Sobre Hito de Concreto

BM-21.0
905.361
Km.20+946, Lado Izq a 11.30m.
Sobre Roca Fija Pintura Negra

PERFIL
ESCALAS
HORIZONTAL = 1/2000
VERTICAL = 1/200



PENDIENTES	COTA DE TERRENO	COTA DE SUBRASANTE	ALINEAMIENTO	KILOMETRAJE
-4.905% en 190.0mts	893.859, 893.772, 892.878, 892.890, 891.971, 891.890, 891.322, 891.060, 890.937, 886.611, 890.818, 890.460, 890.889, 890.867, 890.968, 891.317, 890.975, 891.352, 890.975, 891.352, 891.052, 884.571, 891.132, 885.107, 891.211, 891.013, 891.290, 890.482, 891.369, 889.981, 891.448, 890.089, 891.528, 890.099, 891.607, 890.207, 891.686, 890.507, 891.765, 890.766, 891.845, 890.973, 891.924, 891.279, 892.003, 891.515, 892.083, 891.700, 892.202, 891.945, 892.393, 891.976, 892.655, 892.017, 892.989, 892.127, 893.394, 892.944, 893.870, 893.564, 894.418, 894.187, 895.037, 894.854, 895.727, 895.447, 896.449, 896.237, 897.170, 897.164, 897.892, 897.945, 898.606, 898.738, 899.278, 899.431, 899.903, 900.193, 900.483, 900.707, 901.016, 901.308, 901.502, 901.826, 901.942, 902.368, 902.336, 902.784, 902.683, 902.995, 902.984, 903.083, 903.246, 903.286, 903.504, 903.521, 903.762, 903.706, 904.019, 904.088, 904.277, 904.211, 904.535, 904.467, 904.792, 904.802, 905.050, 905.212, 905.308, 905.645, 905.548, 905.844	893.859, 893.772, 892.878, 892.890, 891.971, 891.890, 891.322, 891.060, 890.937, 886.611, 890.818, 890.460, 890.889, 890.867, 890.968, 891.317, 890.975, 891.352, 890.975, 891.352, 891.052, 884.571, 891.132, 885.107, 891.211, 891.013, 891.290, 890.482, 891.369, 889.981, 891.448, 890.089, 891.528, 890.099, 891.607, 890.207, 891.686, 890.507, 891.765, 890.766, 891.845, 890.973, 891.924, 891.279, 892.003, 891.515, 892.083, 891.700, 892.202, 891.945, 892.393, 891.976, 892.655, 892.017, 892.989, 892.127, 893.394, 892.944, 893.870, 893.564, 894.418, 894.187, 895.037, 894.854, 895.727, 895.447, 896.449, 896.237, 897.170, 897.164, 897.892, 897.945, 898.606, 898.738, 899.278, 899.431, 899.903, 900.193, 900.483, 900.707, 901.016, 901.308, 901.502, 901.826, 901.942, 902.368, 902.336, 902.784, 902.683, 902.995, 902.984, 903.083, 903.246, 903.286, 903.504, 903.521, 903.762, 903.706, 904.019, 904.088, 904.277, 904.211, 904.535, 904.467, 904.792, 904.802, 905.050, 905.212, 905.308, 905.645, 905.548, 905.844	PI-32-D, PI-33-I, PI-34-I, PI-35-D	19+940, 20, 100, 200, 300, 400, 500, 600, 700, 800, 900, Km 21

JNR CONSULTORES S.A.
Ing. Andrés M. Choque León
Magdalena, Tarma, Chile
C.I.P. 22854

JNR CONSULTORES S.A.
Ing. ENRIQUE COX F. CASSINELLI
C.I.P. 22854

LEYENDA :

- ALCANTARILLA EXISTENTE (E) O PROYECTADA (P)
- SEÑALES INFORMATIVAS
- POSTES KILOMETRICOS
- SEÑALES REGLAMENTARIAS
- SEÑALES PREVENTIVAS
- CUNETAS EXISTENTES (E) O PROYECTADAS (P)
- GUARDAVIA
- EJE PROYECTADO
- BORDE PROYECTADO
- CARRIL DE ASCENSO
- EJE ACCESOS
- BORDE ACCESOS
- BORDE CARRETERA EXISTENTE
- CERCO
- TORRE ALTA TENSION
- POSTE DE LUZ
- BUZON
- SEÑAL