

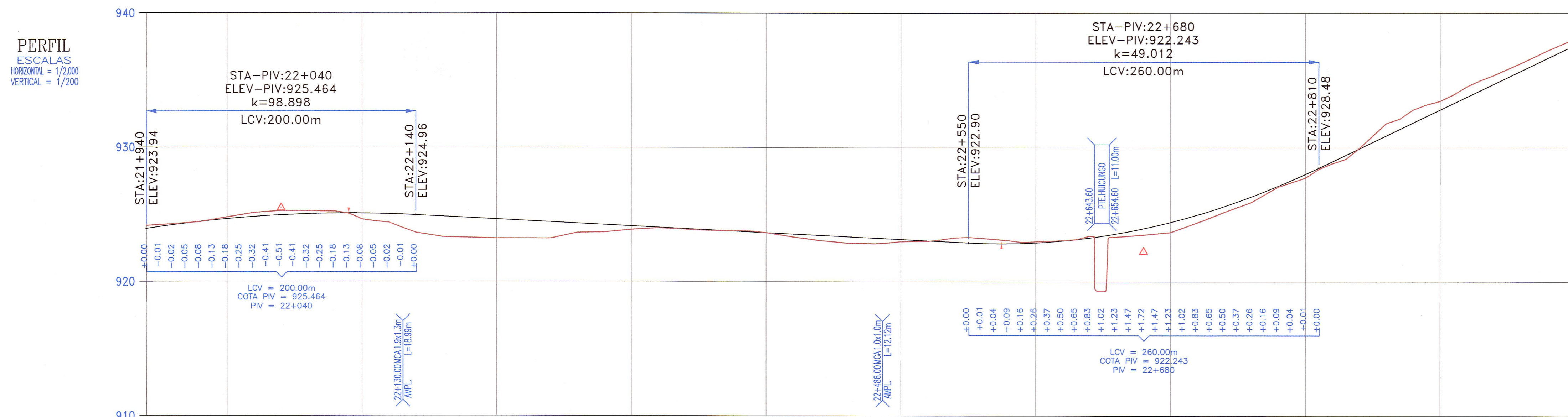
ELEMENTOS DE CURVAS

Nº	SEN	ANGULO			RADIO	T	LC	EX.	SOBRE ANCHO	PERALTE (%)	Le	Ls	P	k	LTan	S Tan	PC / TS	SC	PI	CS	PT / ST	COORDENADAS PC/TS		COORDENADAS SC		COORDENADAS PI		COORDENADAS CS		COORDENADAS PT/ST	
		Grad	Min	Seg																		Norte	Este	Norte	Este	Norte	Este	Norte	Este	Norte	Este
PI-37	D	90	26	43.00	45.00	28.657	51.036	8.350	1.80	8.00	20.00	20.00	0.370	9.984	13.368	6.698	22+049.431	22+069.431	22+105.14	22+120.467	22+140.467	9,312,231.073	285,762.172	9,312,211.222	265,764.219	9,312,176.234	265,771.969	9,312,171.667	265,736.425	9,312,166.864	265,717.055
PI-38	D	15	02	29.93	280.00	36.966	73.507	2.430	0.50	4.00							22+333.402	22+370.37	22+406.910	22+406.910	9,312,134.413	265,526.869			9,312,128.195	265,490.429			9,312,131.647	265,453.624	
PI-39	I	09	37	55.78	800.00	67.404	134.490	2.835	0.30	3.00							22+511.988	22+579.39	22+646.478	22+646.478	9,312,141.460	265,349.005			9,312,147.755	265,281.896			9,312,142.732	265,214.679	
PI-40	D	36	34	33.00	180.00	43.258	84.906	5.125	0.70	5.00	30.00	30.00	0.208	14.997	20.007	10.007	22+791.697	22+821.697	22+866.25	22+906.604	22+936.604	9,312,131.910	265,069.864	9,312,130.507	265,039.906	9,312,126.355	264,995.518	9,312,150.878	264,958.288	9,312,166.195	264,932.504

BM-22.0
924.776
Km.21+993, Lado Der a 9.30m.
Sobre H/C Costado Poste A.Tension

BM-22.5
922.205
Km.22+498, Lado Der a 16.00m.
Sobre Hilo de Concreto

BM-23.0
934.225
Km.22+900, Lado Izq a 5.50m.
Sobre Hilo de Concreto



PENDIENTES	COTA DE TERRENO	COTA DE SUBRASANTE	ALINEAMIENTO	KILOMETRAJE
1.519% en 370.0mts	923.945 924.167	923.945 924.167	Δ=90°26'43"	21+940
-0.503% en 640.0mts	924.229 924.292	924.229 924.292	R=45.00	100
	924.472 924.442	924.472 924.442	PI=37-D	200
	924.674 924.792	924.674 924.792		300
	924.837 925.125	924.837 925.125		400
	924.958 925.265	924.958 925.265		500
	925.040 925.265	925.040 925.265		600
	925.081 925.225	925.081 925.225		700
	925.081 924.635	925.081 924.635		800
	925.041 924.405	925.041 924.405		900
	924.961 923.645	924.961 923.645		1000
	924.860 923.325	924.860 923.325		1100
	924.759 923.275	924.759 923.275		1200
	924.659 923.225	924.659 923.225		1300
	924.558 923.224	924.558 923.224		1400
	924.457 923.214	924.457 923.214		1500
	924.357 923.654	924.357 923.654		1600
	924.256 923.694	924.256 923.694		1700
	924.155 923.884	924.155 923.884		1800
	924.055 924.004	924.055 924.004		1900
	923.954 923.914	923.954 923.914		2000
	923.853 923.814	923.853 923.814		2100
	923.753 923.784	923.753 923.784		2200
	923.652 923.644	923.652 923.644		2300
	923.551 923.324	923.551 923.324		2400
	923.451 923.056	923.451 923.056		2500
	923.350 922.866	923.350 922.866		2600
	923.249 922.826	923.249 922.826		2700
	923.149 922.976	923.149 922.976		2800
	923.048 923.015	923.048 923.015		2900
	922.947 923.255	922.947 923.255		3000
	922.857 923.225	922.857 923.225		3100
	922.838 923.065	922.838 923.065		3200
	922.900 922.983	922.900 922.983		3300
	923.044 923.073	923.044 923.073		3400
	923.270 923.403	923.270 923.403		3500
	923.578 923.333	923.578 923.333		3600
	923.967 923.483	923.967 923.483		3700
	924.437 923.683	924.437 923.683		3800
	924.989 924.403	924.989 924.403		3900
	925.623 925.189	925.623 925.189		4000
	926.339 925.919	926.339 925.919		4100
	927.136 927.069	927.136 927.069		4200
	928.015 927.739	928.015 927.739		4300
	928.965 928.809	928.965 928.809		4400
	929.925 929.960	929.925 929.960		4500
	930.885 931.790	930.885 931.790		4600
	931.846 932.810	931.846 932.810		4700
	932.806 933.450	932.806 933.450		4800
	933.766 934.531	933.766 934.531		4900
	934.726 935.371	934.726 935.371		5000
	935.687 936.261	935.687 936.261		5100
	936.647 937.211	936.647 937.211		5200
	937.607 938.074	937.607 938.074		5300

LEYENDA :

- PROG. TIPO DIMEN (E) o (P) LONGITUD
- SEÑALES INFORMATIVAS
- POSTES KILOMETRICOS
- SEÑALES REGLAMENTARIAS
- SEÑALES PREVENTIVAS
- CUNETAS EXISTENTE (E) O PROYECTADA (P)
- GUARDAVIA
- EJE PROYECTADO
- BORDE PROYECTADO
- CARRIL DE ASCENSO
- EJE ACCESOS
- BORDE ACCESOS
- BORDE CARRETERA EXISTENTE
- CERCO
- TORRE ALTA TENSION
- POSTE DE LUZ
- BUZON
- SEÑAL