

CUADRO PUNTOS DE CONTROL GPS

| N° | CODIGO | COORDENADAS UTM | |
|----|--------|-----------------|-------------|
| | | NORTE | ESTE |
| 1 | GPS-11 | 9'311,062.689 | 263,698.417 |

ELEMENTOS DE CURVAS

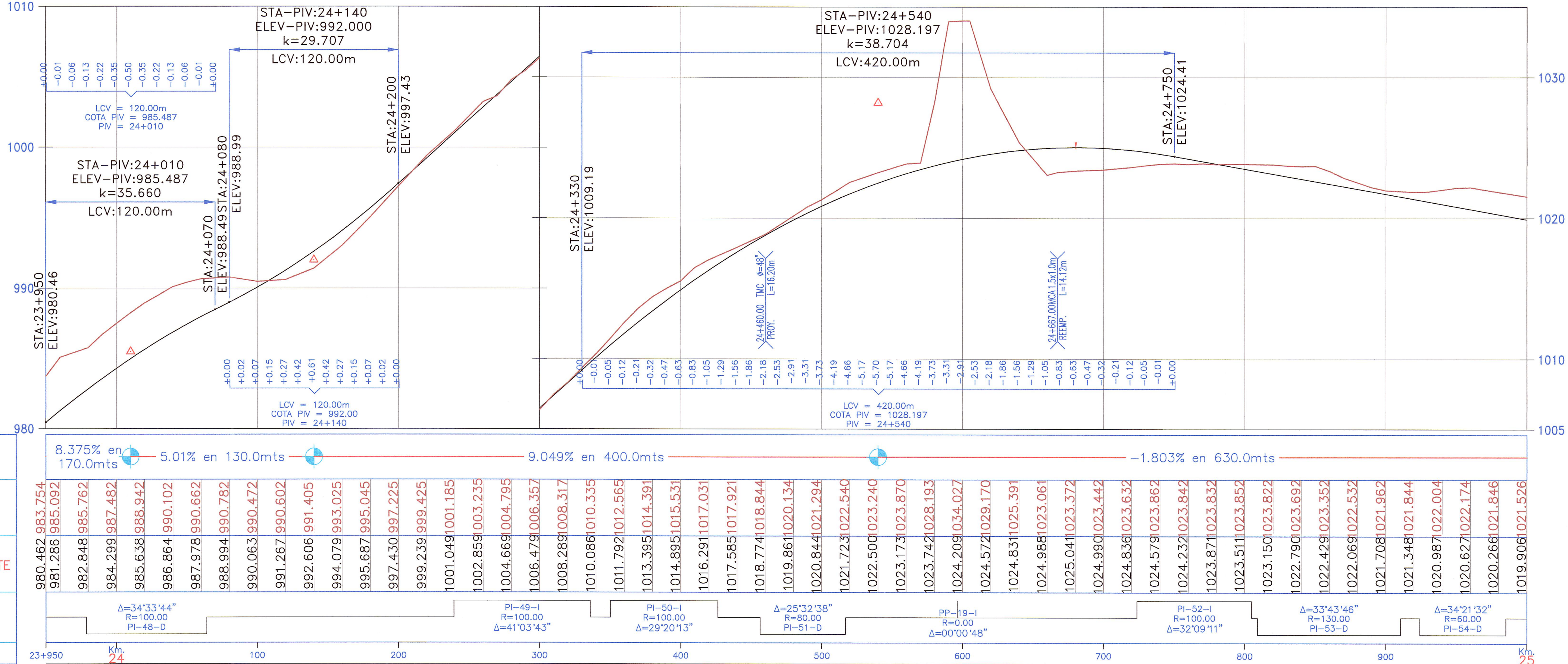
| N° | SEN | ANGULO | | | RADIO | T | LC | EX. | SOBRE ANCHO | PERALTE (%) | Le | Ls | P | k | LTan | STan | PC/TS | SC | PI | CS | PT/ST | COORDENADAS PC/TS | | COORDENADAS SC | | COORDENADAS PI | | COORDENADAS CS | | COORDENADAS PT/ST | | | |
|-------|-----|--------|-----|-----|----------|--------|--------|-------|-------------|-------------|--------|--------|-------|--------|--------|-------|------------|------------|-----------|------------|------------|-------------------|-------------|----------------|-------------|----------------|-------------|----------------|-------------|-------------------|-------------|--|--|
| | | Grad | Min | Seg | | | | | | | | | | | | | | | | | | Norte | Este | Norte | Este | Norte | Este | Norte | Este | Norte | Este | | |
| PI-48 | D | 34 | 33 | 44 | 100.00 | 17.847 | 35.322 | 1.580 | 0.90 | 6.500 | 25.000 | 25.000 | 0.260 | 12.493 | 16.680 | 8.346 | 23+978.751 | 24+003.751 | 24+022.44 | 24+039.074 | 24+064.074 | 9,311,627.067 | 264,176.085 | 9,311,608.018 | 264,159.921 | 9,311,592.609 | 264,149.233 | 9,311,587.968 | 264,131.064 | 9,311,579.466 | 264,107.572 | | |
| PI-49 | I | 41 | 03 | 43 | 100.00 | 23.766 | 46.667 | 2.785 | 0.90 | 6.500 | 25.000 | 25.000 | 0.260 | 12.493 | 16.680 | 8.346 | 24+239.320 | 24+264.320 | 24+289.36 | 24+310.987 | 24+335.987 | 9,311,526.739 | 263,940.445 | 9,311,518.237 | 263,916.954 | 9,311,511.683 | 263,892.723 | 9,311,489.740 | 263,880.533 | 9,311,468.983 | 263,865.630 | | |
| PI-50 | I | 29 | 20 | 13 | 100.00 | 13.177 | 26.203 | 0.864 | 0.90 | 6.500 | 25.000 | 25.000 | 0.260 | 12.493 | 16.680 | 8.346 | 24+350.253 | 24+375.253 | 24+388.99 | 24+401.455 | 24+426.455 | 9,311,456.810 | 263,859.192 | 9,311,434.969 | 263,847.064 | 9,311,423.756 | 263,838.993 | 9,311,409.951 | 263,839.530 | 9,311,385.044 | 263,837.580 | | |
| PI-51 | D | 25 | 32 | 38 | 80.00 | 5.341 | 10.666 | 0.178 | 1.00 | 7.000 | 25.000 | 25.000 | 0.325 | 12.490 | 16.680 | 8.353 | 24+456.420 | 24+481.420 | 24+487.12 | 24+492.086 | 24+517.086 | 9,311,355.099 | 263,836.486 | 9,311,330.224 | 263,834.277 | 9,311,324.422 | 263,835.366 | 9,311,319.923 | 263,831.543 | 9,311,297.226 | 263,821.127 | | |
| PP-19 | I | 00 | 00 | 48 | Quiembre | | | | | | | | | | | | | | | | | | | | | | | | | | | | |
| PI-52 | I | 32 | 09 | 11 | 100.00 | 15.686 | 31.118 | 1.223 | 0.90 | 6.500 | 25.000 | 25.000 | 0.260 | 12.493 | 16.680 | 8.346 | 24+723.790 | 24+748.790 | 24+765.18 | 24+779.907 | 24+804.907 | 9,311,114.090 | 263,725.277 | 9,311,091.491 | 263,714.626 | 9,311,077.419 | 263,706.088 | 9,311,061.126 | 263,708.423 | 9,311,036.161 | 263,709.358 | | |
| PI-53 | D | 32 | 43 | 46 | 130.00 | 26.106 | 51.530 | 2.596 | 0.80 | 6.000 | 25.000 | 25.000 | 0.200 | 12.496 | 16.675 | 8.341 | 24+809.042 | 24+834.042 | 24+861.01 | 24+885.572 | 24+910.572 | 9,311,032.039 | 263,709.684 | 9,311,007.077 | 263,710.859 | 9,310,980.235 | 263,713.790 | 9,310,957.065 | 263,699.925 | 9,310,934.872 | 263,688.439 | | |
| PI-54 | D | 34 | 21 | 32 | 60.00 | 5.506 | 10.981 | 0.252 | 1.80 | 8.000 | 25.000 | 25.000 | 0.433 | 12.482 | 16.705 | 8.368 | 24+924.223 | 24+949.223 | 24+955.39 | 24+960.204 | 24+985.204 | 9,310,922.955 | 263,681.779 | 9,310,902.070 | 263,668.126 | 9,310,895.749 | 263,666.576 | 9,310,894.505 | 263,660.188 | 9,310,881.871 | 263,638.671 | | |

BM-24.0
975.826
Km.23+880, Lado Der a 13.20m.
Sobre Hito de Concreto

BM-24.5
1,017.168
Km.24+442, Lado Der a 9.00m.
Sobre Roca Fija Pintura Negra

BM-25.0
1,021.476
Km.24+897, Lado Izq a 8.20m.
Sobre Hito de Concreto

PERFIL
ESCALAS
HORIZONTAL = 1/20,000
VERTICAL = 1/200



| PENDIENTES | COTA DE TERRENO | COTA DE SUBRASANTE | ALINEAMIENTO | KILOMETRAJE | | | | | | |
|--------------------|--|--|--|------------------------------------|------------------------------------|-----------------------------------|------------------------------------|------------------------------------|------------------------------------|-----------------------------------|
| 8.375% en 170.0mts | 980.462, 983.754, 981.286, 985.092, 982.848, 985.762, 984.299, 987.482, 985.638, 988.942, 986.864, 990.102, 987.978, 990.662, 988.994, 990.782, 990.063, 990.472, 991.267, 990.602, 992.606, 991.405, 994.079, 993.025, 995.687, 995.045, 997.430, 997.225, 999.239, 999.425, 1001.049, 1001.185, 1002.859, 1003.235, 1004.669, 1004.795, 1006.479, 1006.357, 1008.289, 1008.317, 1010.086, 1010.335, 1011.792, 1012.565, 1013.395, 1014.391, 1014.895, 1015.531, 1016.291, 1017.031, 1017.585, 1017.921, 1018.774, 1018.944, 1018.861, 1020.134, 1020.844, 1021.294, 1021.723, 1022.540, 1022.500, 1023.240, 1023.173, 1023.870, 1023.742, 1028.193, 1024.209, 1034.027, 1024.572, 1029.170, 1024.831, 1025.391, 1024.988, 1023.061, 1025.041, 1023.372, 1024.990, 1023.442, 1024.836, 1023.632, 1024.579, 1023.862, 1024.232, 1023.842, 1023.871, 1023.832, 1023.511, 1023.852, 1023.150, 1023.822, 1022.790, 1023.692, 1022.429, 1023.352, 1022.069, 1022.532, 1021.708, 1021.962, 1021.348, 1021.844, 1020.987, 1022.004, 1020.627, 1022.174, 1020.266, 1021.846, 1019.906, 1021.526 | 980.462, 983.754, 981.286, 985.092, 982.848, 985.762, 984.299, 987.482, 985.638, 988.942, 986.864, 990.102, 987.978, 990.662, 988.994, 990.782, 990.063, 990.472, 991.267, 990.602, 992.606, 991.405, 994.079, 993.025, 995.687, 995.045, 997.430, 997.225, 999.239, 999.425, 1001.049, 1001.185, 1002.859, 1003.235, 1004.669, 1004.795, 1006.479, 1006.357, 1008.289, 1008.317, 1010.086, 1010.335, 1011.792, 1012.565, 1013.395, 1014.391, 1014.895, 1015.531, 1016.291, 1017.031, 1017.585, 1017.921, 1018.774, 1018.944, 1018.861, 1020.134, 1020.844, 1021.294, 1021.723, 1022.540, 1022.500, 1023.240, 1023.173, 1023.870, 1023.742, 1028.193, 1024.209, 1034.027, 1024.572, 1029.170, 1024.831, 1025.391, 1024.988, 1023.061, 1025.041, 1023.372, 1024.990, 1023.442, 1024.836, 1023.632, 1024.579, 1023.862, 1024.232, 1023.842, 1023.871, 1023.832, 1023.511, 1023.852, 1023.150, 1023.822, 1022.790, 1023.692, 1022.429, 1023.352, 1022.069, 1022.532, 1021.708, 1021.962, 1021.348, 1021.844, 1020.987, 1022.004, 1020.627, 1022.174, 1020.266, 1021.846, 1019.906, 1021.526 | 980.462, 983.754, 981.286, 985.092, 982.848, 985.762, 984.299, 987.482, 985.638, 988.942, 986.864, 990.102, 987.978, 990.662, 988.994, 990.782, 990.063, 990.472, 991.267, 990.602, 992.606, 991.405, 994.079, 993.025, 995.687, 995.045, 997.430, 997.225, 999.239, 999.425, 1001.049, 1001.185, 1002.859, 1003.235, 1004.669, 1004.795, 1006.479, 1006.357, 1008.289, 1008.317, 1010.086, 1010.335, 1011.792, 1012.565, 1013.395, 1014.391, 1014.895, 1015.531, 1016.291, 1017.031, 1017.585, 1017.921, 1018.774, 1018.944, 1018.861, 1020.134, 1020.844, 1021.294, 1021.723, 1022.540, 1022.500, 1023.240, 1023.173, 1023.870, 1023.742, 1028.193, 1024.209, 1034.027, 1024.572, 1029.170, 1024.831, 1025.391, 1024.988, 1023.061, 1025.041, 1023.372, 1024.990, 1023.442, 1024.836, 1023.632, 1024.579, 1023.862, 1024.232, 1023.842, 1023.871, 1023.832, 1023.511, 1023.852, 1023.150, 1023.822, 1022.790, 1023.692, 1022.429, 1023.352, 1022.069, 1022.532, 1021.708, 1021.962, 1021.348, 1021.844, 1020.987, 1022.004, 1020.627, 1022.174, 1020.266, 1021.846, 1019.906, 1021.526 | Δ=34°33'44" R=100.00 PI-48-D | Δ=29°20'13" R=100.00 PI-49-I | Δ=25°32'38" R=80.00 PI-50-I | Δ=41°03'43" R=100.00 PI-51-D | Δ=33°43'46" R=130.00 PI-53-D | Δ=32°09'11" R=100.00 PI-52-I | Δ=34°21'32" R=60.00 PI-54-D |

JNR CONSULTORES S.A.
Ing. ENRIQUE COX CASSINELLI
C.I.P. 22854

LEYENDA :

- ALCANTARILLA EXISTENTE (E) O PROYECTADA (P)
- SEÑALES INFORMATIVAS
- POSTES KILOMETRICOS
- SEÑALES REGLAMENTARIAS
- SEÑALES PREVENTIVAS
- CUNETA EXISTENTE (E) O PROYECTADA (P)
- GUARDAVIA
- EJE PROYECTADO
- BORDE PROYECTADO
- CARRIL DE ASCENSO
- EJE ACCESOS
- BORDE ACCESOS
- BORDE CARRETERA EXISTENTE
- CERCO
- TORRE ALTA TENSION
- POSTE DE LUZ
- BUZON
- SEÑAL