

CUADRO PUNTOS DE CONTROL GPS

N°	CODIGO	COORDENADAS UTM	
		NORTE	ESTE
1	GPS-12	9'310,426.984	263,340.609

ELEMENTOS DE CURVAS

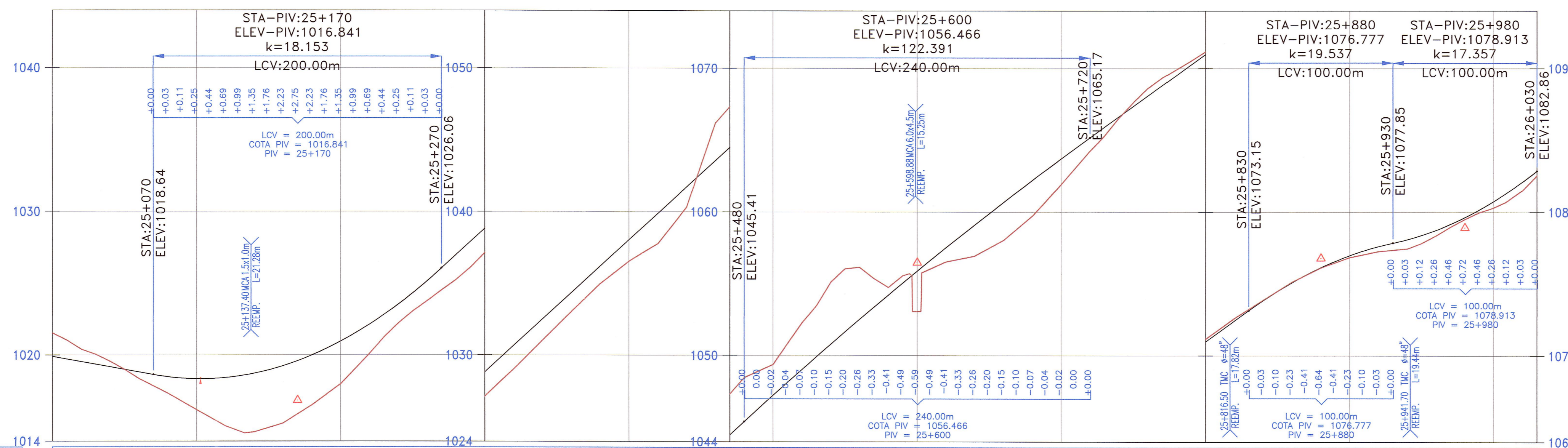
N°	SEN	ANGULO			RADIO	T	LC	EX.	SOBRE ANCHO	PERALTE (%)	Le	Ls	P	k	LTan	STan	PC / TS	SC	PI	CS	PT / ST	COORDENADAS PC/TS		COORDENADAS SC		COORDENADAS PI		COORDENADAS CS		COORDENADAS PT/ST	
		Grad	Min	Seg																		Norte	Este	Norte	Este	Norte	Este	Norte	Este	Norte	Este
PI-55	I	20	01	23.00	100.00	4.978	9.947	0.124	0.90	6.500	25.000	25.000	0.260	12.493	16.680	8.346	25+006.681	25+031.681	25+036.87	25+041.628	25+066.628	9,310,872.307	263,619.441	9,310,860.260	263,597.555	9,310,858.862	263,592.407	9,310,854.352	263,589.558	9,310,836.973	263,571.611
PI-56	I	23	11	38.00	180.00	24.075	47.866	1.603	0.700	5.000	25.000	25.000	0.145	12.498	16.671	8.337	25+227.427	25+252.427	25+276.99	25+300.292	25+325.292	9,310,720.399	263,460.855	9,310,701.886	263,444.063	9,310,684.538	263,426.783	9,310,661.385	263,418.817	9,310,638.156	263,409.589
PI-57	D	53	15	42.00	65.00	15.496	30.423	1.822	1.300	7.500	30.000	30.000	0.576	12.973	20.056	10.051	25+519.478	25+549.478	25+567.33	25+579.902	25+609.902	9,310,456.078	263,342.091	9,310,428.898	263,329.563	9,310,411.207	263,325.457	9,310,408.327	263,307.526	9,310,397.697	263,279.548
PI-58	I	12	59	40.00	280.00	31.888	63.502	1.810	0.500	4.000							25+728.737	25+780.62		25+792.239	9,310,364.148	263,165.547			9,310,355.146	263,134.956			9,310,339.496	263,107.173	
PI-59	D	15	04	17.00	210.00	12.635	25.239	0.380	0.500	4.000	30.000	30.000	0.179	14.997	20.005	10.005	25+942.204	25+972.204	25+985.01	25+997.444	26+027.444	9,310,285.894	262,976.512	9,310,251.800	262,950.036	9,310,244.888	262,939.220	9,310,242.410	262,926.625	9,310,234.301	262,897.749

BM-25.0
1,021.476
Km.24+897, Lado Izq a 8.20m.
Sobre Hito de Concreto

BM-25.5
1,036.694
Km.25+388, Lado Der a 12.00m.
Sobre Hito de Concreto

BM-26.0
1,076.687
Km.25+913, Lado Der a 12.00m.
Sobre Hito de Concreto

PERFIL
ESCALAS
HORIZONTAL = 1/2000
VERTICAL = 1/200



PENDIENTES	COTA DE TERRENO	COTA DE SUBRASANTE	ALINEAMIENTO	KILOMETRAJE
-1.803% en 610.0mts	1019.906 1021.526	1019.906 1021.526	PI-55-I R=100.00 Δ=20°01'23"	25
9.215% en 430.0mts	1019.545 1020.396	1019.545 1020.396	PI-56-I R=180.00 Δ=23°11'38"	100
7.254% en 280.0mts	1019.185 1019.556	1019.185 1019.556	Δ=53°15'42"	200
2.136% en 100.0mts	1018.824 1018.356	1018.824 1018.356	PI-57-D R=280.00 Δ=12°59'40"	300
7.897% en 170.0mts	1018.491 1017.323	1018.491 1017.323		400
	1018.351 1016.173	1018.351 1016.173		500
	1018.431 1015.053	1018.431 1015.053		600
	1018.732 1014.643	1018.732 1014.643		700
	1019.253 1015.253	1019.253 1015.253		800
	1019.994 1016.513	1019.994 1016.513		900
	1020.956 1017.983	1020.956 1017.983		1000
	1022.138 1020.092	1022.138 1020.092		1100
	1023.540 1022.202	1023.540 1022.202		1200
	1025.162 1023.781	1025.162 1023.781		1300
	1026.978 1025.241	1026.978 1025.241		1400
	1028.821 1027.118	1028.821 1027.118		1500
	1030.664 1029.018	1030.664 1029.018		1600
	1032.507 1031.028	1032.507 1031.028		1700
	1034.350 1033.023	1034.350 1033.023		1800
	1036.193 1034.973	1036.193 1034.973		1900
	1038.036 1036.530	1038.036 1036.530		2000
	1039.879 1037.754	1039.879 1037.754		2100
	1041.722 1040.314	1041.722 1040.314		2200
	1043.565 1044.162	1043.565 1044.162		2300
	1045.408 1048.456	1045.408 1048.456		2400
	1047.251 1049.366	1047.251 1049.366		2500
	1049.094 1052.256	1049.094 1052.256		2600
	1050.937 1055.109	1050.937 1055.109		2700
	1052.780 1056.139	1052.780 1056.139		2800
	1054.623 1054.746	1054.623 1054.746		2900
	1056.466 1053.064	1056.466 1053.064		3000
	1058.309 1056.509	1058.309 1056.509		3100
	1060.152 1059.919	1060.152 1059.919		3200
	1062.000 1059.731	1062.000 1059.731		3300
	1063.843 1061.913	1063.843 1061.913		3400
	1065.686 1064.253	1065.686 1064.253		3500
	1067.529 1066.517	1067.529 1066.517		3600
	1069.372 1068.597	1069.372 1068.597		3700
	1071.215 1071.155	1071.215 1071.155		3800
	1073.058 1073.875	1073.058 1073.875		3900
	1074.901 1075.136	1074.901 1075.136		4000
	1076.744 1076.126	1076.744 1076.126		4100
	1078.587 1076.836	1078.587 1076.836		4200
	1080.430 1077.246	1080.430 1077.246		4300
	1082.273 1077.439	1082.273 1077.439		4400
	1084.116 1078.349	1084.116 1078.349		4500
	1085.959 1079.497	1085.959 1079.497		4600
	1087.802 1080.297	1087.802 1080.297		4700
	1089.645 1081.507	1089.645 1081.507		4800
	1091.488 1082.539	1091.488 1082.539		4900

LEYENDA :

- ALCANTARILLA EXISTENTE (E) O PROYECTADA (P)
- SEÑALES INFORMATIVAS
- POSTES KILOMETRICOS
- SEÑALES REGLAMENTARIAS
- SEÑALES PREVENTIVAS
- CUNETAS EXISTENTES (E) O PROYECTADAS (P)
- GUARDAVIA
- EJE PROYECTADO
- BORDE PROYECTADO
- CARRIL DE ASCENSO
- EJE ACCESOS
- BORDE ACCESOS
- BORDE CARRETERA EXISTENTE
- CERCO
- TORRE ALTA TENSION
- POSTE DE LUZ
- BUZON
- SEÑAL